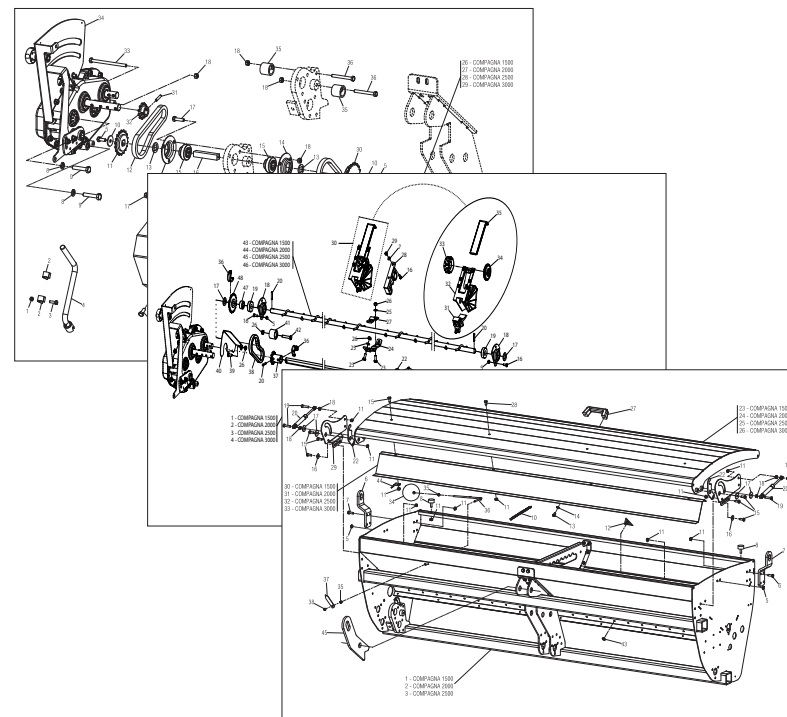


# MASCHIO **GASPARDO**



# COMPAGNA

**Cod: F07011021 2012-04**

- \*) Valido per Paesi UE
- \*) Valid for EU member countries
- \*) Gilt für EU-Mitgliedsländer
- \*) Valable dans le Pays UE
- \*) Válido para Países UE

**IT** PARTI DI RICAMBIO  
**EN** SPARE PARTS  
**DE** ERSATZTEILE  
**FR** PIÈCES DÉTACHÉES  
**ES** PIEZAS DE REPUESTO

## PARTI DI RICAMBIO

Le ordinazioni delle parti di ricambio vanno fatte presso i nostri concessionari di zona e devono essere sempre corredate dalle seguenti indicazioni:

- **Tipo, modello e numero di matricola dell'attrezzatura.** Tali dati sono stampigliati nell'apposita targhetta di cui è dotata ogni attrezzatura.
- **Numero di codice della parte richiesta** rilevabile dal catalogo ricambi.
- **Descrizione del particolare e quantità richiesta.**
- **Numero della tavola.**
- **Mezzo di trasporto.** Nel caso questa voce non sia specificata, la Ditta Costruttrice, pur dedicando a questo servizio una particolare cura, non risponde di eventuali ritardi di spedizione dovuti a cause di forza maggiore.

Le spese di trasporto si intendono sempre a carico del destinatario. La merce viaggia a rischio e pericolo del committente anche se venduta franco destino.

**NOTA:** Il termine **(Dx) Destro** o **(Sx) Sinistro** della macchina o di parti di essa, è inteso guardando la macchina dalla parte posteriore. Le eccezioni saranno indicate.

## SPARE PARTS

Orders must be transmitted through our area dealers and should always include the following indications:

- **Type, model and serial number of the machine.** These data are punched on the data plate with which every implement is equipped.
- **Code number of the required spare part.** This will be found in the spare parts catalogue.
- **Description of the part and required quantity.**
- **Table number.**
- **Means of dispatch.** If this item is not indicated, the Manufacturer, while dedicating particular care to this service, shall not be held responsible for delays in delivery caused by cases of force majeure.

Transport expenses shall always be at the consignee's charge. The goods travel at the purchaser's risk and peril even when sold ex destination.

**NOTE:** The symbols **(Dx) right** and **(Sx) left**, concerning the machine or single parts of it, are referred, as in the figure, to a rear view of them. Exceptions will be indicated.

## ERSATZTEILE

Die Bestellungen müssen bei unseren Gebietshändler angegeben werden. Bei der Bestellung sind stets die folgenden Angaben zu machen:

- **Typ, Modell und Serien-Nummer des Geräts.** Diese Daten stehen auf dem Typenschild, mit dem jedes Gerät versehen ist.
- **Artikel Nr. der erforderlichen Ersatzteile.** Diese stehen im Ersatzteil-Katalog.
- **Beschreibung des Ersatzteils und die erforderliche Stückzahl.**
- **Tafelnummer.**
- **Versandmittel.** Wenn dieser Punkt nicht spezifiziert wird, haftet die Herstellerfirma nicht für etwaigen Lieferverzug aufgrund höherer Gewalt, auch wenn er diesen Service besonders aufmerksam abwickelt.

Die Frachtkosten gehen dagegen immer zu Lasten des Empfängers. Die Ware reist auf Gefahr und Risiko des Auftraggebers, auch wenn frei Haus Verkauft vereinbart worden ist.

**N.B.:** Die Merkzeichen **(Dx) rechts** und **(Sx) links** betreffen eine rückwärtige Aussicht der Maschine oder Teile von ihr (siehe Bild). Ausnahmen werden gezeigt.

## PIECES DÉTACHÉES

Les ordres doivent être effectués auprès de nos concessionnaires de zone en précisant les indications suivantes:

- **Type, modèle et numéro de série de la machine.** Ces données sont gravées sur la plaque d'identification de chaque outil.
- **Numéro de code de la pièce détachée** indiqué sur le catalogue des pièces détachées.
- **Description de la pièce et quantité requise.**
- **Numéro de plan.**
- **Moyen d'expédition.** Si cette rubrique n'est pas indiquée, le Constructeur, bien que soucieux de ce service, ne répond pas des retards d'expédition pour des causes de force majeure. Les frais de transport sont toujours à la charge du destinataire. La marchandise voyage aux risques et périls de l'acheteur même si vendue franco de port.

**N.B.:** Les références **(Dx) droit** et **(Sx) gauche** de la machine ou des parties de la même, est entendue, comme de la figure, en regardant la machine de derriere dans le sens de marche.

## RESPUESTOS

Los pedidos han de efectuarse en nuestros consesionarios de zona y deben incluir siempre las siguientes indicaciones:

- **Tipo, modelo y número de matrícula del equipo.** Dichos datos están impresos en la relativa placa presente en el equipo.
- **Número de código de la parte requerida** presente en el catálogo respuestas.
- **Descripción de la pieza y cantidad requerida.**
- **Numero de ilustración.**
- **Medio de transporte.** En caso que este ítem no esté especificado, el Fabricante, aún prestando la debidas consideraciones para este aspecto, no responde por eventuales retardos de env'o debidos a causas de fuerza mayor.

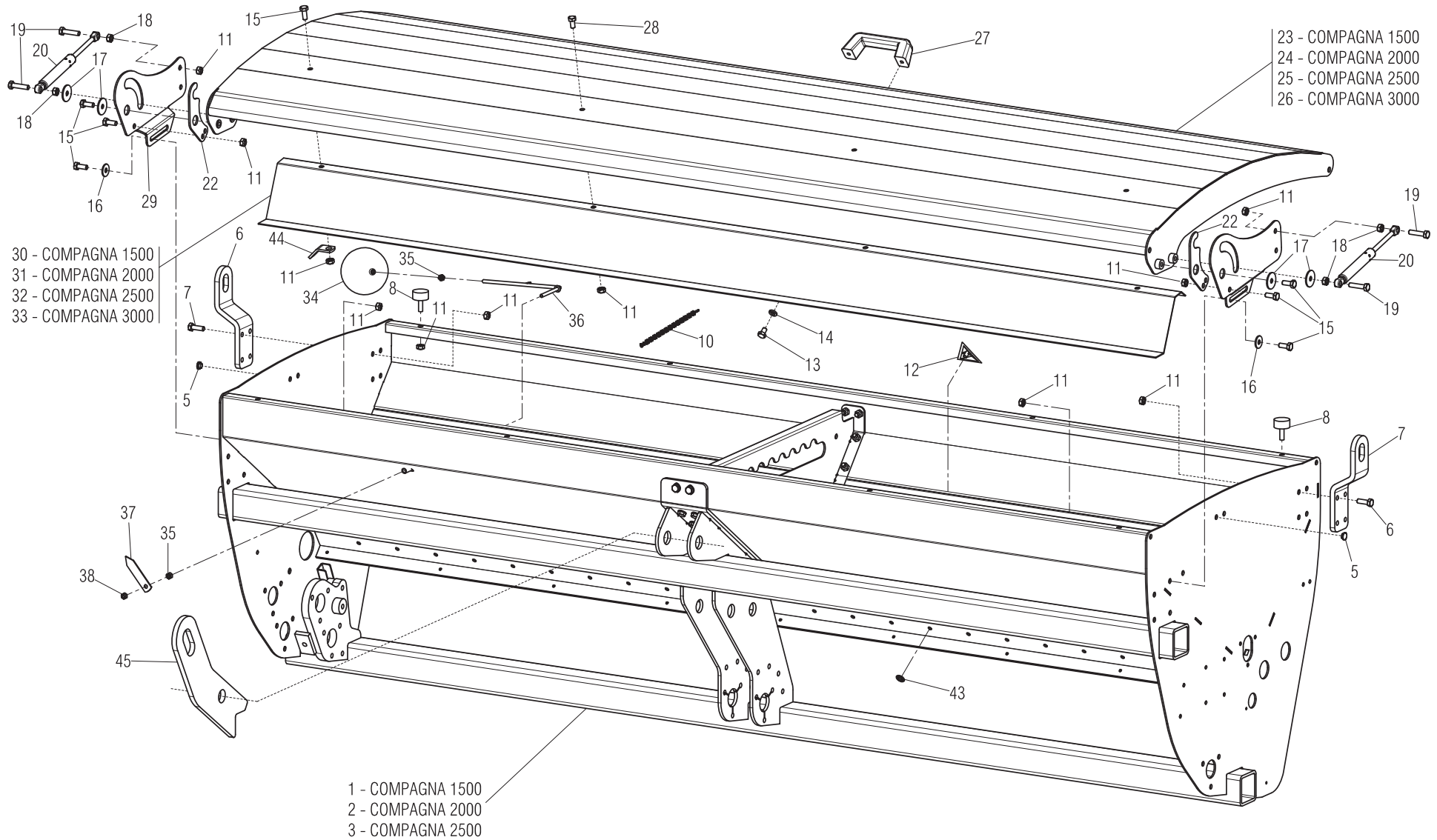
Los gastos de transporte se consideran siempre a cargo del destinatario. La mercadería viaja bajo riesgo y peligro del comprador, incluso cuando se vende franco destino.

**N.B.:** La referencia **(Dx) derecha** o **(Sx) izquierda** de la máquina o de sus componentes, se entien-de, como en la figura, mirando la máquina por la parte trasera. Se indicarán las excepciones.

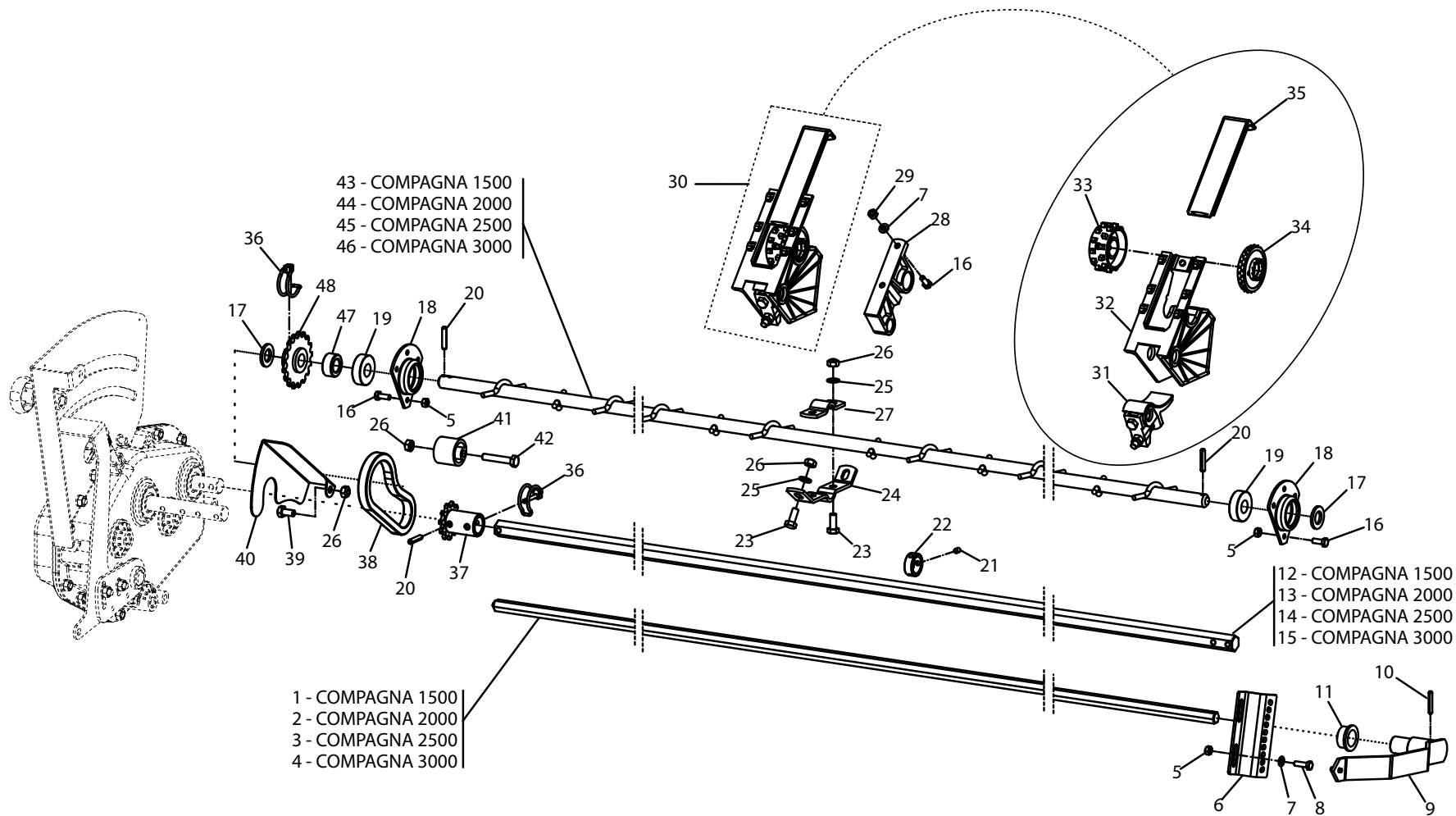
<b>Nr. Tav.</b>	<b>Descrizione</b>	<b>Pag.</b>
TAV. 010	Telaio tramoggia .....	4
TAV. 020	Distribuzione .....	6
TAV. 030	Cambio .....	8
TAV. 040	Esploso cambio.....	10
TAV. 050	Trasmissione .....	12
TAV. 060	Vaschette scarico semi .....	14
TAV. 070	Tubi spandiseme.....	16
TAV. 080	Separatori e rialzo tramoggia (optional).....	18
TAV. 090	Kit luci e tabelle d'ingombro .....	20
TAV. 100	Bussoliera inferiore.....	22
TAV. 110	Collegamento Seminatrice/Erpice DELFINO.....	24
TAV. 120	Collegamento Seminatrice/Erpice DS-DC-DCR-DM-DMR-ORSO/ Zappatrice B-C-SC.....	26
TAV. 130	Collegamento Seminatrice/Dischiera PRESTO.....	28

<b>Nr. Tav.</b>	<b>Description</b>	<b>Pag.</b>
TAV. 010	Hopper frame.....	4
TAV. 020	Distribution.....	6
TAV. 030	Speed change gear.....	8
TAV. 040	Gear exploded drawing.....	10
TAV. 050	Transmission.....	12
TAV. 060	Seed collecting trays.....	14
TAV. 070	Seed delivery tubes.....	16
TAV. 080	Hopper dividers and extension (optional).....	18
TAV. 090	Lights kit.....	20
TAV. 100	Lower tubes holder.....	22
TAV. 110	Hooking to DELFINO power harrow.....	24
TAV. 120	Hooking to DS-DC-DCR-DM-DMR-ORSO power harrow/ B-C-SC rotary tiller.....	26
TAV. 130	Hooking to PRESTO disk harrow.....	28

**TAV. 010**

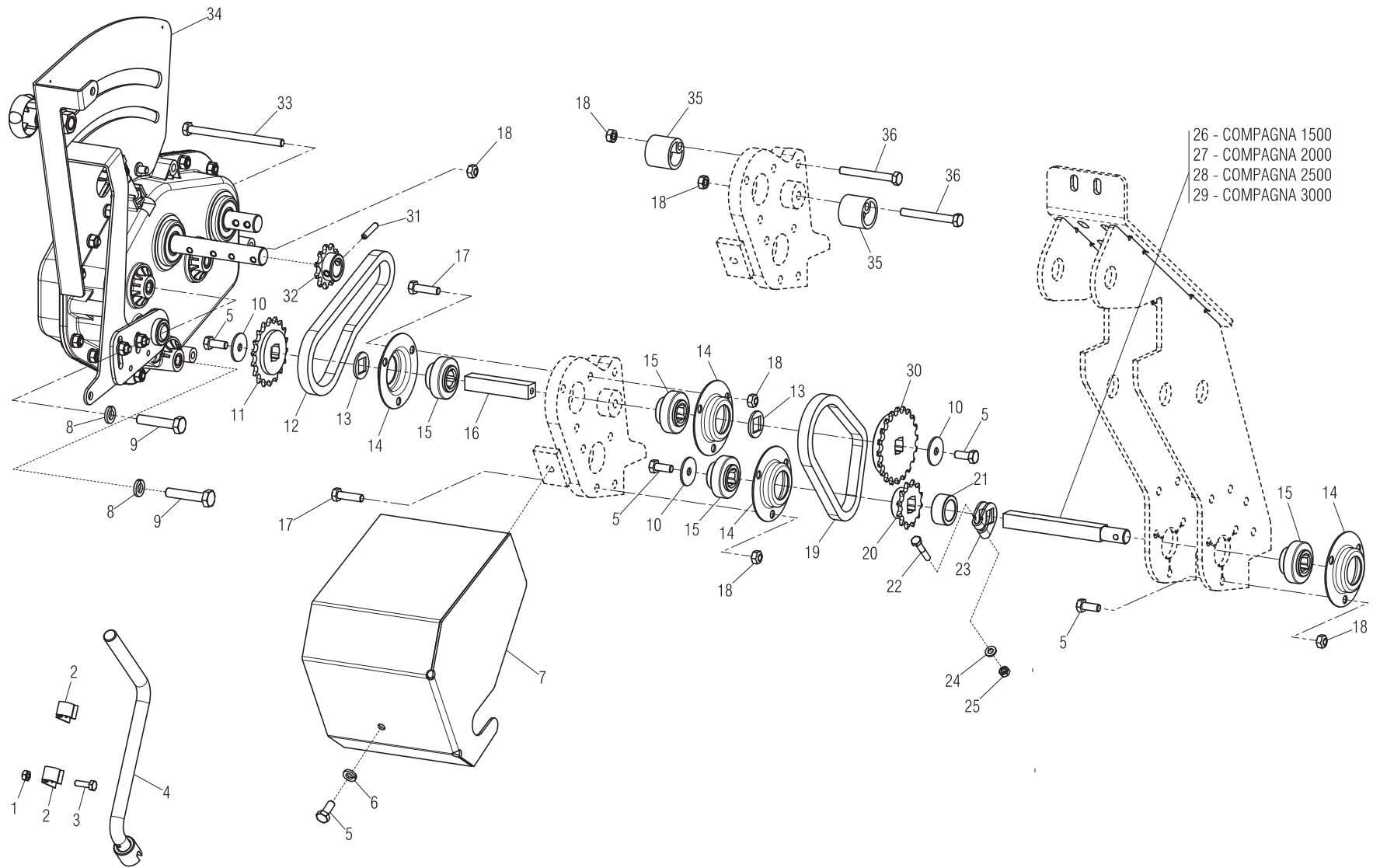


POS	CODICE	DESCRIZIONE	DESCRIPTION	DESCRIPTION	BENENNUNG	DESCRIPCION
1	M75415100	COMPOSTO TELAIO TRAMOGGIA 1500	HOPPER FRAME 1500	BATI TREMIE 1500	TRICHTERRAHMEN 1500	BASTIDOR TOLVA 1500
2	M75420100	COMPOSTO TELAIO TRAMOGGIA 2000	HOPPER FRAME 2000	BATI TREMIE 2000	TRICHTERRAHMEN 2000	BASTIDOR TOLVA 2000
3	M75425100	COMPOSTO TELAIO TRAMOGGIA 2500	HOPPER FRAME 2500	BATI TREMIE 2500	TRICHTERRAHMEN 2500	BASTIDOR TOLVA 2500
4	M75430100	COMPOSTO TELAIO TRAMOGGIA 3000	HOPPER FRAME 3000	BATI TREMIE 3000	TRICHTERRAHMEN 3000	BASTIDOR TOLVA 3000
5	F05100145	TAPPO PLASTCA D.9 X FORO 10	0	0	0	0
6	F01020440	VITE M 8X1,25X25 U5739 8.8 ZN	BOLT M8X1,25X25 U5739 8.8 ZN	VIS M8X1,25X25 U5739 8.8 ZN	SCHRA. M8X1,25X25 U5739 8.8 ZN	TORNIL.M8X1,25X25 U5739 8.8 ZN
7	M75400148	STAFFA SOLLEVAMENTO LATERALE	0	0	0	0
8	F05150456	PARACOLPI 30X15 M8X25	BUFFER 30X17 M8X21	PARE-CHOCS 30X17 M8X21	STOSSDZMPFER 30X17 M8X21	PARAGOLPES 30X17 M8X21
10	M58100930	CATENELLA L=476	ASSEMBLY CHAIN DMP L=476	CHAINE L=476	KETTE L=476	CADENA L=476
11	F01220022	DADO M 8X1,25 D980 8 ZN	NUT M8X 1,25 D980 8 ZN	ECROU M8X 1,25 D980 8 ZN	MUTTER M8X 1,25 D980 8 ZN	TUERCA M8X 1,25 D980 8 ZN
12	G07000130	ANGOLARE FLUIDITA' SEMENTI	SEED CHUTE L BAR	CORNIERE FLUIDITE GRAINES	SAATGUT FLUIDITZTZWINKEL	ANGULAR FLUIDEZ SEMILLAS
13	F01020427	VITE M 8X1,25X12 U5739 8.8 ZN	BOLT M8X 1,25X12 U5739 8.8 ZN	VIS 8X12 5739 8.8 ZN	SCHRAUBE 8X12 5739 8.8 ZN	TORNILLO 8X12 5739 8.8 ZN
14	F01480099	ROS.G 8,4X14,4X2,7 FLZNNC-240H	GROWER WASHER D.8	RONDELLE GROWER D.8	SCHEIBE GROWER D.8	ARANDELA GROWER D.8
15	F01020436	VITE M 8X1,25X20 U5739 8.8 ZN	BOLT M8X1,25X20 U5739 8.8 ZN	VIS M8X1,25X20 U5739 8.8 ZN	SCHRA. M8X1,25X20 U5739 8.8 ZN	TORN. M8X1,25X20 U5739 8.8 ZN
16	F01420048	ROS.M8 8,4X 24X 2 U6593 ZN	WASHER M8 8,4X 24X 2 U6593 ZN	RONDELLE M8 8,4X 24X2 U6593 ZN	SCHEIBE M8 8,4X 24X 2 U6593 ZN	ARANDELA M8 8,4X 24X2 U6593 ZN
17	F01420049	ROS.M8 8,4X 32X 2 U6593 ZN	WASHER M8 8,4X32X2 U6593 ZN	RONDELLA M8 8,4X32X2 U6593 ZN	SCHEIBE M8 8,4X32X2 U6593 ZN	ARANDELA M8 8,4X32X2 U6593 ZN
18	F01200244	DADO M 8X1,25 U5588 6.8 ZN	NUT M8 X1,25 U5588 6.8 ZN	ECROU M8 X1,25 U5588 6.8 ZN	MUTTER M8 X1,25 U5588 6.8 ZN	TUERCA M8 X1,25 U5588 6.8 ZN
19	F01020449	VITE M 8X1,25X35 U5739 8.8 ZN	BOLT M8X 1.25X35 U5739 8.8 ZN	VIS M 8X35	SCHRAUBE M 8X35	TORNILLO M 8X35
20	F02400011	MOLLA A GAS 400 N	GAS SPRING 400 N	RESSORT A GAZ 400 N	GASFEDER 400 N	MUELLE DE GAS 400 N
21	G16315450	STAFFA ROTAZ.COPERCHIO SX ZN	0	0	0	0
22	G16214721	STAFFA BLOCCO COPERCHIO ZN	BRACKET	ETRIER	B_GEL	ESTRIBO
23	M75415124	ASS.COPERCHIO 1500	COVER 1500	COUVERCLE 1500	DECKEL 1500	TAPA 1500
24	M75420124	ASS.COPERCHIO 2000	COVER 2000	COUVERCLE 2000	DECKEL 2000	TAPA 2000
25	G16214731	COPERCHIO NINA 250	COVER SHAFT	ASSEMBLAGE COUVERCLE	MONT.DECKEL	ENS.TAPA
26	G16214651	COPERCHIO 300	COVER	COUVERCLE	DECKEL	TAPA
27	F05150112	MANIGLIA INTERAS. 117 FORO 8MM	HANDLE	POIGNEE	HANDGRIFF	MANILLA
28	F01020432	VITE M 8X1,25X16 U5739 8.8 ZN	BOLT M8X 1.25X16 U5739 8.8 ZN	VIS M 8X16	SCHRAUBE M 8X16	TORNILLO M 8X16
29	G16315440	STAFFA ROTAZ.COPERCHIO DX ZN	ROTATION BRACKET	BRIDE DE ROTATION	ROTATIONB_GEL	ABRAZADERA DE ROTACIEN
30	M75415126	LAM.RINFORZO COPERCHIO 1500	COVER REINFORCEMENT 1500	RENFORCEMENT COUVERTURE 1500	DECKEL VERSTÄRKERUNG 1500	REFUERZO TAPA 1500
31	M75420126	LAM.RINFORZO COPERCHIO 2000	COVER REINFORCEMENT 2000	RENFORCEMENT COUVERTURE 2000	DECKEL VERSTÄRKERUNG 2000	REFUERZO TAPA 2000
32	G16214750	LAMIERA RINF.COPERCHIO 250	COVER REINFORCEMENT 2500	RENFORCEMENT COUVERTURE 2500	DECKEL VERSTÄRKERUNG 2500	REFUERZO TAPA 2500
33	G16214680	LAMIERA RINF.COPERCHIO 300	COVER REINFORCEMENT 3000	RENFORCEMENT COUVERTURE 3000	DECKEL VERSTÄRKERUNG 3000	REFUERZO TAPA 3000
34	G07000309	GALLEGGIANTE	FLOAT	FLOTTEUR	SCHWIMMER	FLOTADOR
35	F01200022	DADO M 6X 1 U5587 6.8 ZN	NUT M6X1 U5587 6.8 ZN	ECROU M6	MUTTER M6	DADO M6
36	G07000308	ASTA LIVELLO SEMENTI	SEED LEVEL ROD	TIGE DE NIVEAU DES GRAINES	SAATGUTMESS-STAB	VARILLA DE NIVEL SEMILLAS
37	G07000310	INDICE LIVELLO POS. VERTICALE	VERTICAL POSITION LEVEL INDEX	INDEX DE NIVEAU POS. VERTICAL	STANDANZEIGER VERTIKALE POSITI	NDICE NIVEL POSICIN VERTICALIN
38	F01220011	DADO M 6X 1 D980 8 ZN	NUT M6X1 D980 8 ZN	ECROU M6X1 D980 8 ZN	MUTTER M6X1 D980 8 ZN	TUERCA M6X1 D980 8 ZN
43	F02050648	ANELLO BENZING-QUICKLOCK BQ7 >	BENZING-QUICKLOCK BQ7 RING	BAGUE BENZING-QUICKLOCK BQ7	RING BENZING-QUICKLOCK BQ7	ANILLO BENZING-QUICKLOCK BQ7
44	M62100559	PIATTO ATTACCO CATENELLA ZN	PLATE	PLAQUETTE	PLATTE	PLAQUITA
45	M75400149	STAFFA SOLLEVAMENTO 3°PUNTO	0	0	0	0



POS	CODICE	DESCRIZIONE	DESCRIPTION	DESCRIPTION	BENENNUNG	DESCRIPCION
1	M75415337	ALBERO ESAGONALE E=14	HEXAGONAL SHAFT E=14	ARBRE HEXAGONAL E=14	SECHSKANTWELLE E=14	ARBOL HEXAGONAL E=14
2	M75420337	ALBERO ESAGONALE E=14	HEXAGONAL SHAFT E=14	ARBRE HEXAGONAL E=14	SECHSKANTWELLE E=14	ARBOL HEXAGONAL E=14
3	G16220510	ASSE ESAG.14 X2050 ZN	HEX. SPINDLE 14x2050 GALVAN.	AXE HEXAGONAL 14x2050 ZN	SECHSK.ACHSE 14x2050 ZN	EJE HEXAGONAL 14x2050 ZN
4	G16220520	ASSE ESAG.14 X2550 ZN	HEX. SPINDLE 14x2550 GALVAN.	AXE HEXAGONAL 14x2550 ZN	SECHSK.ACHSE 14x2550 ZN	EJE HEXAGONAL 14x2550 ZN
5	F01220011	DADO M 6X 1 D980 8 ZN	NUT M6X1 D980 8 ZN	ECROU M6X1 D980 8 ZN	MUTTER M6X1 D980 8 ZN	TUERCA M6X1 D980 8 ZN
6	G16220250	LEVA REGOLAZ.TASTATORI	FEELER ADJUSTING SQUARE *	LEVIER DE REGLAGE DES TATEURS	TASTERREGULIERWINKEL*	ESCUADRA DE REGULAC. DE PALPAD
7	F01410037	ROS.M6 6,4X12,5X1,6 U6592 ZN	PLANE WASHER D.6	RONDELLE D.6	SCHEIBE D.6	ARANDELA D.6
8	F01020404	VITE M6X1X20 U5739 8.8 ZN	BOLT M 6X 1X20 U5739 8.8 ZN	VIS M 6X20	SCHRAUBE M 6X20	TORNILLO M 6X20
9	G16221200	LEVA REGOL.TASTATORI	FEELER ADJUSTMENT LEVER	LEVIER REGLAGE TATEURS	TASTERREGULIERHEBEL	PALANCA REGULACIN PALPADORES M
10	F02100086	SPINA E.P. 5X 30 U6873 C70 BR	PIN EL. 5 X30 DIN 1481 ZN	FICHE EL. 5 X30 DIN 1481 ZN	SPANNSTIFT 5 X30 DIN 1481 ZN	CLAVIJA EL.5 X30 DIN 1481 ZN
11	F04100055	CUSCIN.FLANG.MFM-2228-15	BEARING MFM-2228-15	ROULEMENT MFM-2228-15	LAGER MFM-2228-15	COJINETE MFM-2228-15
12	M75415336	ALBERO ESAGONALE E=19	HEXAGONAL SHAFT E=19	ARBRE HEXAGONAL E=19	SECHSKANTWELLE E=19	ARBOL HEXAGONAL E=19
13	M75420336	ALBERO ESAGONALE E=19	HEXAGONAL SHAFT E=19	ARBRE HEXAGONAL E=19	SECHSKANTWELLE E=19	ARBOL HEXAGONAL E=19
14	M75425336	ALBERO ESAGONALE E=19	HEXAGONAL SHAFT E=19	ARBRE HEXAGONAL E=19	SECHSKANTWELLE E=19	ARBOL HEXAGONAL E=19
15	M75430336	ALBERO ESAGONALE E=19	HEXAGONAL SHAFT E=19	ARBRE HEXAGONAL E=19	SECHSKANTWELLE E=19	ARBOL HEXAGONAL E=19
16	F01020403	VITE M6X1X16 U5739 8.8 ZN	BOLT M6X1X16 U5739 8.8 ZN	VIS M6X1X16 U5739 8.8 ZN	SCHRAUBE M6X1X16 U5739 8.8 ZN	TORNILLO M6X1X16 U5739 8.8 ZN
17	F01410100	ROS.M16 17X 30X 3 U6592 ZN	WASHER M16 17X30X3 U6592 ZN	RONDELLE M16 17X30X3 U6592 ZN	SCHEIBE M16 17X30X3 U6592 ZN	ARANDELA M16 17X30X3 U6592 ZN
18	G16220090	SUPPORTO CUSCINETTO	GALV.BEARING SUPPORT	SUPPORT PALIER ZN	LAGERBSCHE ZN	SOPORTE COJINETE ZN
19	F04010161	CUSC.D17 D40 B12 6203 2RS EX	BEARING D17 D40 B12 6203 2RS	ROULEMENT D17 D40 B12 6203 2RS	LAGER 6203 2RS	COJINETE 6203 2RS SKF
20	F02100114	SPINA E.P. 6X 30 U6873 C70 BR	ELASTIC PIN 6X30	GOUJON ELASTIQUE 6X30	SPANNHUELSE 6X30	ESPINA ELASTICA 6X30
21	F01050085	VITE M6X1X8 U5927	BOLT M6X1X8 U5927	VIS M6X1X8 U5927	SCHRAUBE M6X1X8 U5927	TORNILLO M6X1X8 U5927
22	G16221510	FERMO ASSE DISTRIBUZIONE ZN	STOP	ARRET	FESTSTELLVORRICHTUNG	BLOQUEO
23	F01020436	VITE M 8X1,25X 20 U5739 8.8 ZN	BOLT M8X1,25X20 U5739 8.8 ZN	VIS M8X1,25X20 U5739 8.8 ZN	SCHRA. M8X1,25X20 U5739 8.8 ZN	TORN. M8X1,25X20 U5739 8.8 ZN
24	G16221260	SUPPORTO INF.ALBERO AGITATORE	UNDER SHAFT SUPPORT	SUPPORT INF. ARBRE	UNTERE HALTERUNG WELLE	SOPORTE INFERIOR EJE
25	F01410051	ROS.M8 8,4X 17X1,6 U6592 ZN	WASHER M8 8,4X17X1,6 U6592 ZN	RONDEL. M8 8,4X17X1,6 U6592 ZN	SCHEIBE M8 8,4X17X1,6 U6592 ZN	ARANDELA M8 8,4X17X1,6 U6592ZN
26	F01220022	DADO M 8X1,25 D980 8 ZN	NUT M8X 1,25 D980 8 ZN	ECROU M8X 1,25 D980 8 ZN	MUTTER M8X 1,25 D980 8 ZN	TUERCA M8X 1,25 D980 8 ZN
27	G16220590	SUPPORTO MESCOLO	MIXER SUPPORT	SUPPORT MELANGEUR	HALTERUNG MISCHER	SOPORTE MEZCLADOR
28	G19003030	SUPPORTO ALBERI	SHAFTS SUPPORT	SUPPORT ARBRES	WELLENLAGER	SOPORTE EJES
29	F01200022	DADO M 6X 1 U5587 6.8 ZN	NUT M6X1 U5587 6.8 ZN	ECROU M6	MUTTER M6	DADO M6
30	M75400204	ASSIEME DISTRIBUTORE SEMI	SEED DISTRIBUTOR	DISTRIBUTEUR GRAINES	SAMENSZAPPARAT	DISTRIBUIDOR SEMILLAS
31	G16220610	REGOLATORE	GOVERNOR	REGULATEUR	REGLER	REGULADOR
32	G19003014	SCATOLETTA DISTRIBUZIONE	DISTRIBUTION BOX	0	0	0
33	G16220600	RULLO DENTI COMBINATO	COMBINED TOOTH ROLLER	ROTOR GROS ERGOTS *	KOMBINIERTE ZAHNROLLE	RODILLO DIENTES COMBINADO
34	G19002380	RULLO A DENTI FINI	ROLLER- FINE TEETH M97	ROTOR PETITS ERGOTS	FEINGEZAHNTE ROLLE M97	RODILLO DE DIENTES FINOS M97
35	G19003023	CURSORE REGOLAZ.APERTURA	APERTURE ADJUSTMENT SLIDER	0	0	0
36	F02200595	SPINA SICUR. D. 5X30 ZN	PIN X GEAR	GOUJON	BOLZEN	ESPINA
37	G16230060	PIGNONE Z11 ZN	PINION Z 11	PIGNON Z 11	RITZEL Z 11	PIÑN Z 11 P
38	F06080135	CATENA 1/2 ISO 084 28 MAGLIE	CHAIN 1/2 ISO 083 28 SHACKLE	CHAINE 1/2 ISO 083 28 MAILLES	KETTE 1/2 ISO 083 28 MASCHE	CADENA 1/2 ISO 083 28 ESLABON
39	F01020432	VITE M 8X1,25X16 U5739 8.8 ZN	BOLT M8X 1.25X16 U5739 8.8 ZN	VIS M 8X16	SCHRAUBE M 8X16	TORNILLO M 8X16
40	G16230081	CARTER AGITATORE ZN	CARTER	CARTER	GEHAEUSE	CARTER
41	G19001950	TENDICATENA SP. SP. 520	CHAIN STRETCHER SP. 520	TENDEUR DE CHAINE SP. 520	KETTENSANNER SP. 520	SENSOR DE CADENA SP. 520
42	F01020451	VITE M 8X1,25X45 U5739 8.8 ZN	BOLT M8X 1.25X45 U5739 8.8 ZN	VIS M 8X45	SCHRAUBE M 8X45	TORNILLO M 8X45
43	M75415216	ALBERO MESCOLO	MIX SHAFT	ARBRE MELANGEUR	MISCHERWELLE	EJE MEZCLADOR
44	M75420216	ALBERO MESCOLO	MIX SHAFT	ARBRE MELANGEUR	MISCHERWELLE	EJE MEZCLADOR
45	M75425216	ALBERO MESCOLO	MIX SHAFT	ARBRE MELANGEUR	MISCHERWELLE	EJE MEZCLADOR
46	M75430216	ALBERO MESCOLO	MIX SHAFT	ARBRE MELANGEUR	MISCHERWELLE	EJE MEZCLADOR
47	G18801860	BOCCOLA 17,25X30 X14	0	0	0	0
48	G16220100	INGRANAGGIO Z-17	GEAR Z.17	ENGRENAGE Z.17	ZAHNRAD Z.17	ENGRANAJE Z.17

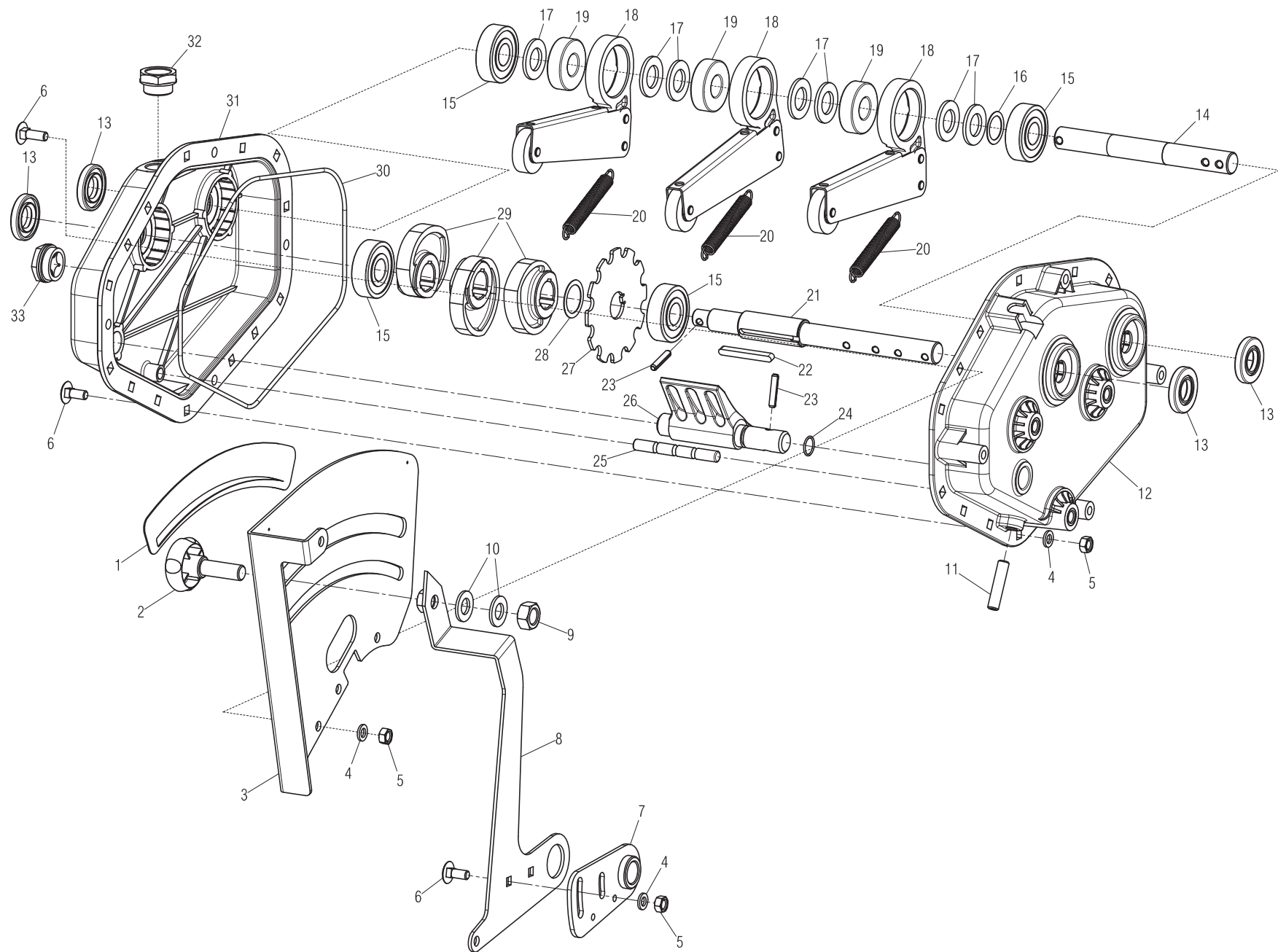
**TAV. 030**





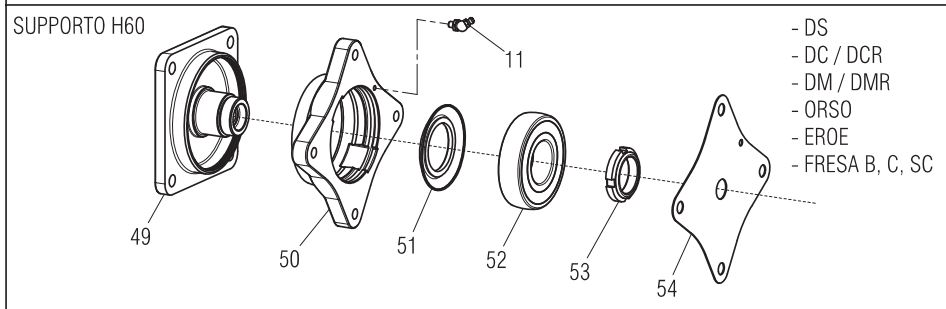
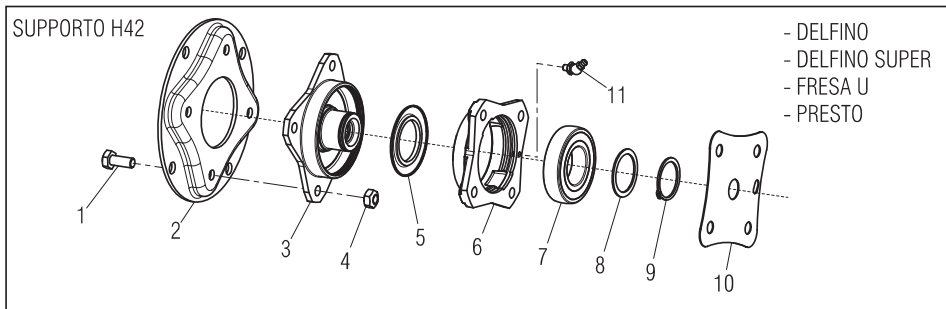
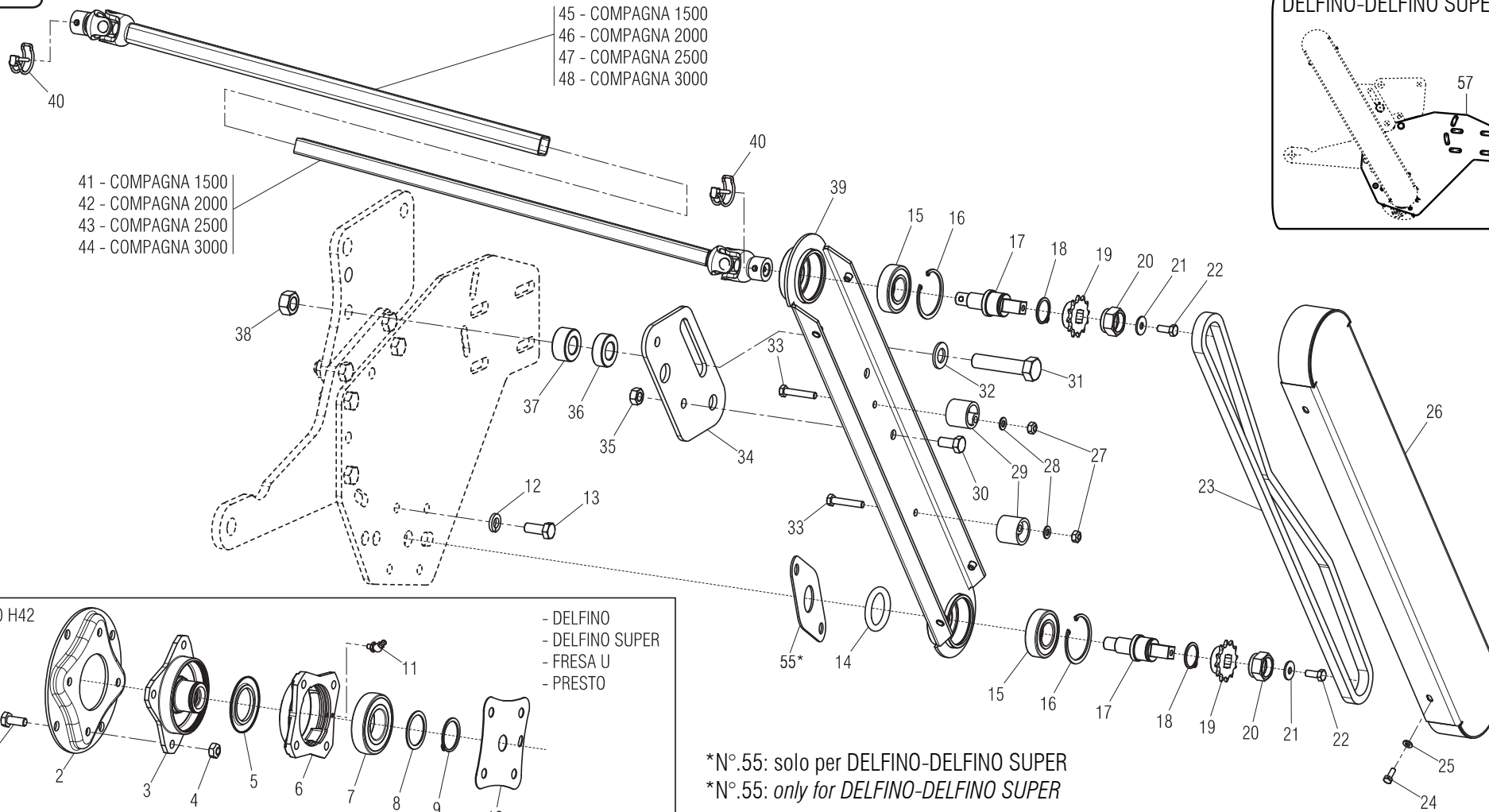
POS	CODICE	DESCRIZIONE	DESCRIPTION	DESCRIPTION	BENENNUNG	DESCRIPCION
1	F01220011	DADO M 6X 1 D980 8 ZN	NUT M6X1 D980 8 ZN	ECROU M6X1 D980 8 ZN	MUTTER M6X1 D980 8 ZN	TUERCA M6X1 D980 8 ZN
2	G07002493	GANCIO SUPPORTO MANIGLIA M ZN	GALVAN. HANDLE SUPPORT HOOK M	CROCHET SUPPORT POIGNEE M ZN	HAKEN GRIFFHALTERUNG M ZN	GANCHO SOPORTE MANIJA M ZN
3	F01020404	VITE M6X1X20 U5739 8.8 ZN	BOLT M 6X 1X20 U5739 8.8 ZN	VIS M 6X20	SCHRAUBE M 6X20	TORNILLO M 6X20
4	G07002489	COMP.MANIGLIA CAMBIO ZN	GEAR HANDLE M ZN	MANIVELLE ESSAI DEBIT/REGLAGE	GETRIEBE SGRIF M ZN	MANIJA CAMBIO M ZN
5	F01020436	VITE M 8X1,25X 20 U5739 8.8 ZN	BOLT M8X1,25X20 U5739 8.8 ZN	VIS M8X1,25X20 U5739 8.8 ZN	SCHRA. M8X1,25X20 U5739 8.8 ZN	TORN. M8X1,25X20 U5739 8.8 ZN
6	F01480099	ROS.G 8,4X14,4X2,7 FLZNNC-240H	GROWER WASHER D.8	RONDELLE GROWER D.8	SCHEIBE GROWER D.8	ARANDELA GROWER D.8
7	M75400342	COPERCHIO PROTEZIONE	COVER	COUVERCLE	DECKEL	TAPA
8	F01480112	ROS.G 10,5X19X 3 FLZNNC - 240H	GROWER WASHER D.10	RONDELLE GROWER D.10	SCHEIBE GROWER D.10	ARANDELA GROWER D.10
9	F01020485	VITE M10X1,5 X 50 5739 8.8 ZN	BOLT M10X1,5 X 50 5739 8.8 ZN	VIS M 10X50	SCHRAUBE M 10X50	TORNILLO M 10X50
10	F01420049	ROS.M8 8,4X 32X 2 U6593 ZN	WASHER M8 8,4X32X2 U6593 ZN	RONDELLA M8 8,4X32X2 U6593 ZN	SCHEIBE M8 8,4X32X2 U6593 ZN	ARANDELA M8 8,4X32X2 U6593 ZN
11	G15131060	PIGNONE Z18 Q.16,4 ZN	PINION Z18 Q.16,4 ZN	PIGNON Z18 Q.16,4 ZN	RITZE Z18 Q.16,4 ZN	PINION Z18 Q.16,4 ZN
12	F06080016	CATENA 1/2 ISO 083 38 MAGLIE	CHAIN 1/2 ISO 083 38 SHACKLE	CHAINE 1/2 ISO 083 38 MAILLES	KETTE 1/2 ISO 083 38 MASCHE	CADENA 1/2 ISO 083 38 ESLABON
13	G18701650	RONDELLA FORO QUADRO ZN	WASHER 16,5X30X2,5 ZN	RONDELLE 16,5X30X2,5 ZN	UNTERLEGSCHEIBE 16,5X30X2,5 ZN	ARANDELA 16,5X30X2,5 ZN
14	G10130950	SUPPORTO CUSCINETTO	BEARING SUPPORT	SUPPORT ROULEMENT	LAGERHALTER	SOPORTE COJINETE
15	G14830390	CUSCINETTO FORO QUADRO	SQUARE-HOLED BEARING	ROULEMENT AL+SAGE CARR+	VIERKANTLAGER	COJINETE ORIFICIO CUADRADO
16	M75400338	ALBERO QUADRO Q=16 L=82	TRANSMISSION SHAFT Q=16 L=82	ARBRE DE TRANSM Q=16 L=82	ANTRIEBSWELLE Q=16 L=82	EJE DE TRASM Q=16 L=82
17	F01020445	VITE M8X1,25X30 U5739 8.8 ZN	BOLT M 8X30	VIS M 8X30	SCHRAUBE M 8X30	TORNILLO M 8X30
18	F01220022	DADO M 8X1,25 D980 8 ZN	NUT M8X 1,25 D980 8 ZN	ECROU M8X 1,25 D980 8 ZN	MUTTER M8X 1,25 D980 8 ZN	TUERCA M8X 1,25 D980 8 ZN
19	F06080121	CATENA 1/2 ISO 084 32 MAGLIE	CHAIN 1/2 ISO 084 32 LINKS	CHAINE 1/2 ISO 084 32 MAILLON	KETTE 1/2 ISO 084 32 GLIEDER	CADENA 1/2 ISO 084 32 ESLABON
20	G11220560	PIGNONE Z12 1/2-3/16 Q.16,4 ZN	PINION Z12 1/2-3/16	PIGNON Z12 1/2-3/16	RITZE Z12 1/2-3/16	PINION Z12 1/2-3/16
21	M75400330	DISTANZIALE D33,7 D23,7 L15	SPACER D33,7 D23,7 L15	ENTRETOISE D33,7 D23,7 L15	DISTANZSTUECK D33,7 D23,7 L15	DISTANCIADOR D33,7 D23,7 L15
22	F01020039	VITE M6X1X35 U5737 8.8 ZN	BOLT M6X1 X35 5737 8.8 ZN	VIS 6 X35 5737 8.8 G ZN	SCHRAUBE 6 X35 5737 8.8 G ZN	TORNILLO 6 X35 5737 8.8 G ZN
23	G14830350	FERMO ASSE TRASM.ZN	LOCK	ARRET	BLOCKIERUNG	PARADO
24	F01410037	ROS.M6 6,4X12,5X1,6 U6592 ZN	PLANE WASHER D.6	RONDELLE D.6	SCHEIBE D.6	ARANDELA D.6
25	F01200231	DADO M 6X 1 U5588 6.8 BR	NUT M6X1 U5588 6.8 BR	ECROU M6X1 U5588 6.8 BR	MUTTER M6X1 U5588 6.8 BR	TUERCA M6X1 U5588 6.8 BR
26	M75415324	ALBERO QUADRO Q=16 L=570	TRANSMISSION SHAFT Q=16 L=570	ARBRE DE TRANSM Q=16 L=570	ANTRIEBSWELLE Q=16 L=570	EJE DE TRASM Q=16 L=570
27	M75420324	ALBERO QUADRO Q=16 L=820	TRANSMISSION SHAFT Q=16 L=820	ARBRE DE TRANSM Q=16 L=820	ANTRIEBSWELLE Q=16 L=820	EJE DE TRASM Q=16 L=820
28	M75425324	ALBERO QUADRO Q=16 L=1070	TRANSMISSION SHAFT Q=16 L=1070	ARBRE DE TRANSM Q=16 L=1070	ANTRIEBSWELLE Q=16 L=1070	EJE DE TRASM Q=16 L=1070
29	M75430324	ALBERO QUADRO Q=16 L=1320	TRANSMISSION SHAFT Q=16 L=1320	ARBRE DE TRANSM Q=16 L=1320	ANTRIEBSWELLE Q=16 L=1320	EJE DE TRASM Q=16 L=1320
30	G07002547	INGRANAGGIO R.L. Z.20 SX	FREE WHEEL GEAR Z-20 RIGHT	ENGRENAGE ROUE LIBRE Z-20 DRT.	ZAHNRAD FREILAUF Z-20 RECHTER	ENGRANAJE R.LIBRE Z-20 DER.
31	F02100114	SPINA E.P. 6X 30 U6873 C70 BR	ELASTIC PIN 6X30	GOUJON ELASTIQUE 6X30	SPANNHUELSE 6X30	ESPINA ELASTICA 6X30
32	G16230040	PIGNONE Z-11 ZN	GEAR Z.11 GALVANIZED	PIGNON Z 11 ZN	RITZEL Z 11 ZN	PIÑN Z 11 ZN
33	F01020094	VITE M8X1,25X120 U5737 8.8 BR	BOLT M8X1,25X120 U5737 8.8 BR	VIS M8X1,25X120 U5737 8.8 BR	SCHRAUBE M8X1,25X120 U5737 8.8	TORNILLO M8X1,25X120 U5737 8.8
34	G16230511	SCATOLA CAMBIO SEME PLA COMPL	GEARBOX	BOITE DE VITESSE	WECHSELGETRIEBEGEHAEUSE	CAJA CAMBIO
35	G19001950	TENDICATENA SP. SP. 520	CHAIN STRETCHER SP. 520	TENDEUR DE CHAINE SP. 520	KETTENSANNER SP. 520	SENSOR DE CADENA SP. 520
36	F01020083	VITE M 8X1,25X70 U5737 8.8 ZN	BOLT M8X1,25X70 U5737 8.8 ZN	VIS M 8X70	SCHRAUBE M 8X70	TORNILLO M 8X70

**TAV. 040**

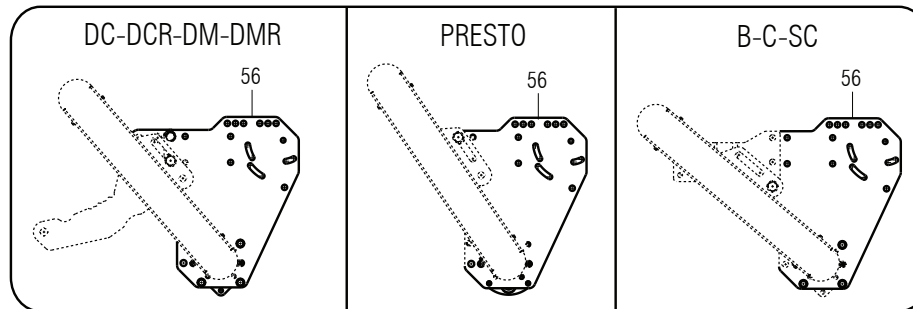


POS	CODICE	DESCRIZIONE	DESCRIPTION	DESCRIPTION	BENENNUNG	DESCRIPCION
1	G19703421	DECAL.REGOLAZ.CAMBIO PLA	DECAL.GEAR REGULATION PLA	0	0	0
2	F06220014	VOLANTINO 8 LOBI M12X40 SX	8-LOBE HANDWHEEL M12X40 LEFT	VOLANT 8 LOBES M12X40 GCH	HANDRAD 8 BUCKEL M12X40 LINKS	VOLANTE 8 LOBI M12X40 IZQ
3	G16230571	SUPPORTO REGOLAZIONE ZN	0	0	0	0
4	F01410051	ROS.M8 8,4X 17X1,6 U6592 ZN	WASHER M8 8,4X17X1,6 U6592 ZN	RONDEL. M8 8,4X17X1,6 U6592 ZN	SCHEIBE M8 8,4X17X1,6 U6592 ZN	ARANDELA M8 8,4X17X1,6 U6592ZN
5	F01200244	DADO M 8X1,25 U5588 6.8 ZN	NUT M8 X1,25 U5588 6.8 ZN	ECROU M8 X1,25 U5588 6.8 ZN	MUTTER M8 X1,25 U5588 6.8 ZN	TUERCA M8 X1,25 U5588 6.8 ZN
6	F01060040	VITE M8X1,25X20 U5732 4.6 ZG	BOLT M8X1,25X20 U5732 4.6 ZN	VIS M8X1,25X20 U5732 4.6 ZN	SCHRA. M8X1,25X20 U5732 4.6 ZN	TORN. M8X1,25X20 U5732 4.6 ZN
7	G16230590	ASS.SUPP.LEVA REGOLAZIONE ZN	0	0	0	0
8	G16230611	LEVA REGOLAZIONE ZN	0	0	0	0
9	G16230360	DADO M12X1,75 SX AUTOB.	M12X1,75 LEFT SELF-LOCK NUT	ECROU M12X1,75 GCH AUTOBLOCANT	MUTTER M12X1,75 LINKS SELBSTSP	TUERCA M12X1,75 IZ. AUTO.
10	F01410076	ROS.M12 13X 24X2,5 U6592 ZN	WASHER D12 U6592 ZN	RONDELLE D12 U6592 ZN	SCHEIBE D12 U6592 ZN	ARANDELA D12 U6592 ZN
11	F01050104	VITE M10X1,5X45 U5927 14.9 BR	GRUB--BOLT 10X45 5927 14.9	GOUJON 10X45 5927 14.9	STIFT 10X45 UNI 5927 14.9	TORNILLO SIN CABEZA 10X45 5927
12	G19005710	SCATOLA CAMBIO	0	0	0	0
13	F03010257	ANEL. T.AS 20X 42X 7 D3760NBR	0	0	0	0
14	G16230530	ALBERO RUOTA LIBERA C.PLA BON.	FREE-WHEEL SHAFT	ARBRE ROUE LIBRE	LOS RADWELLE	LOS RADWELLE
15	F04010207	CUSC.D20 D52 B15 6304 Z	BEARING D20 D52 B15 6304 Z	ROULEMENT D20 D52 B15 6304	LAGER D20 D52 B15 6304 Z	COJINETE D20 D52 B15 6304 Z
16	G20970100	RONDELLA 30X0,5X22 ACC.	WASHER 30X0,5X22 ACC.	RONDELLE 30X0-5X22 ACIER	UNTERLEGSCHIEBE 30X0-5X22 ACC.	ARANDELA 30X0-5X22 ACC.
17	F01410124	ROS.M20 21X 37X 3 U6592 ZN	WASHER M20 21X37X3 U6592 ZN	RONDELLE M20 21X37X3 U6592 ZN	SCHEIBE M20 21X37X3 U6592 ZN	ARANDELA M20 21X37X3 U6592 ZN
18	G07000006	RIBADITURA BIELLA	CONNECTING ROD RIVETING	RIVETAGE BIELLE	PLEUEL EINNIETEN	REMACHADO BIELA
19	F06120065	RUOTA LIBERA KK20	FREE WHEEL	ROUE LIBRE	FREILAUF	RUEDA LIBRE
20	G18903290	MOLLA TRAZ.CAMBIO M	TRACTION SPRING- GEARS M	RESSORT TRACT. BOITE VITESSE M	ZUGFEDER GETRIEBE M	MUELLE TRAC. CAMBIO M
21	G16230540	ALBERO CAMMES CAMBIO PLA	CAM SHAFT	ARBRE A CAMES	NOCKENWELLE	EJE DE LEVAS
22	F02150040	LINGUETTA 6X 6X 55 U6604A	PARALLEL KEY 6X 6X 55 U6604A	LANGUETTE 06X6X55 UNI 6604/A	FEDERKEIL 06X6X55 UNI 6604/A	LENGsETA 06X6X55 UNI 6604/A
23	F02100114	SPINA E.P. 6X 30 U6873 C70 BR	ELASTIC PIN 6X30	GOUJON ELASTIQUE 6X30	SPANNHUELSE 6X30	ESPIÑA ELASTICA 6X30
24	F03010390	ANELLO OR 15,08X2,26 NBR	O-RING 15,08X2,26 NBR	GARNITURE OR 15,08X2,26 NBR	DICHTUNG OR 15,08X2,26 NBR	JUNTA OR 15,08X2,26 NBR
25	G16230550	PERNO SUPPORTO MOLLE	PIN	GOUJON	STIFT	PERNO
26	G16230560	REGOLATORE CAMBIO	0	0	0	0
27	G16230520	RUOTA FONICA	0	0	0	0
28	F01440079	ROND.RASAM.26,2X34,8X0,5 IX	WASHER D.26,2X34,8X0,5	RONDELLE D.26,2X34,8X0,5	UNTERLEGSCHIEBE D.26,2X35X0,5	ARANDELA D.26,2X34,8X0,5
29	G07000014	CAMMA CAMBIO BAGNO OLIO	OIL BATH GEARBOX CAM	CAME BOITE DE VIT. BAIN HUILE	NOCKEN GETRIEBE TLBAD	LEVA CAMBIO BA%O ACEITE
30	F03010721	ANEL. OR 247,24X3,53 NBR	0	0	0	0
31	G19005720	COPERCHIO CAMBIO	GEARBOX COVER	COUVERCLE BOITE DE VITESSE	WECHSELGETRIEBEDECKEL	TAPA CAMBIO
32	F03150706	TAPPO OLIO 3/4" MODELLO TC/6	OIL PLUG 3/4" TC/6	0	0	0
33	F03150736	TAPPO LIVELLO M30X1,5 HFE 22	OIL LEVEL PLUG M30X1,5 HFE 22	BOUCHON NIV. M30X1-5 HFE 22	STANDSCHRAUBE M30X1-5 HFE 22	TAPN NIVEL M30X1-5 HFE 22 D

# TAV. 050

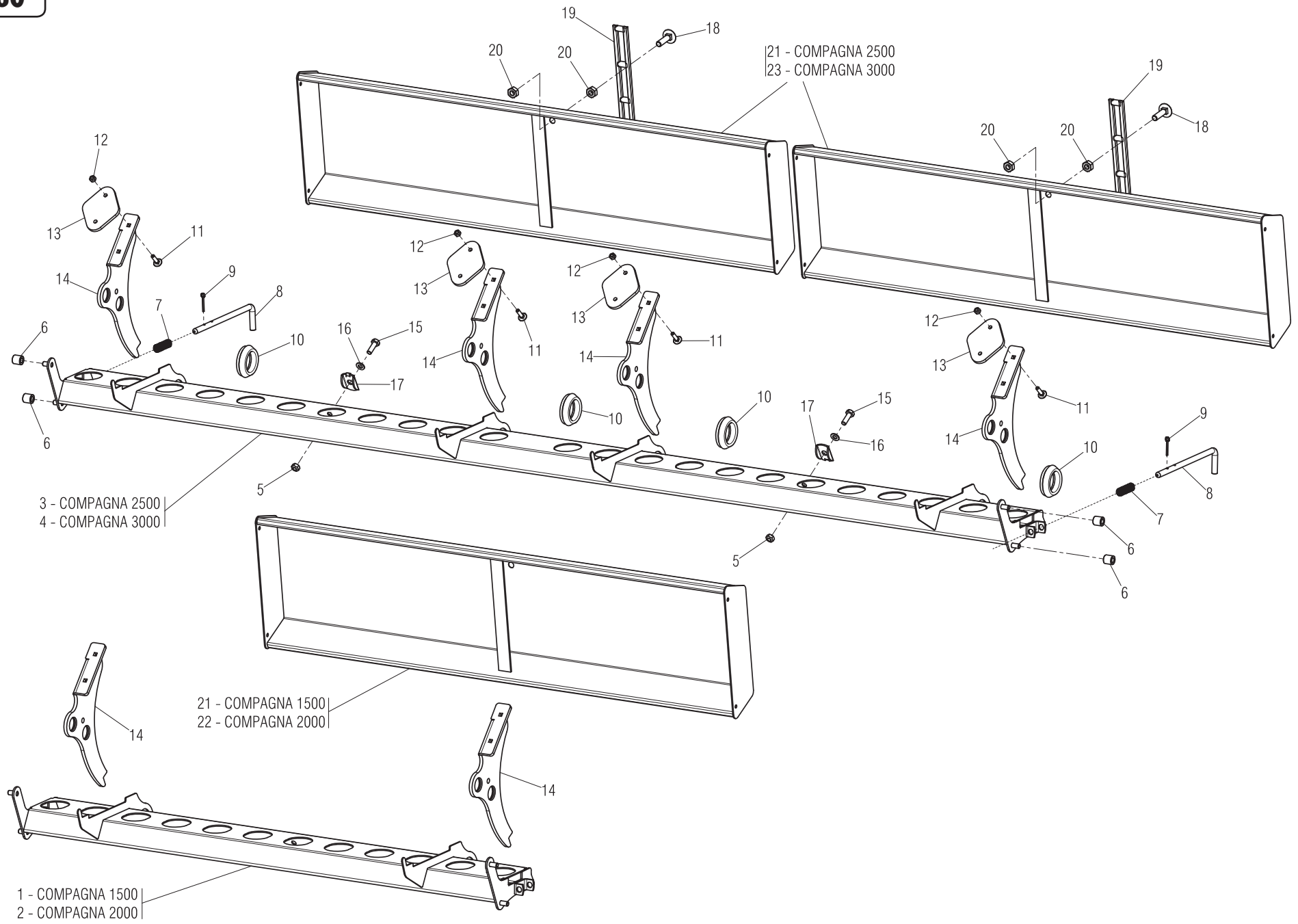


\*N° 55: solo per DELFINO-DELFINO SUPER  
\*N° 55: only for DELFINO-DELFINO SUPER

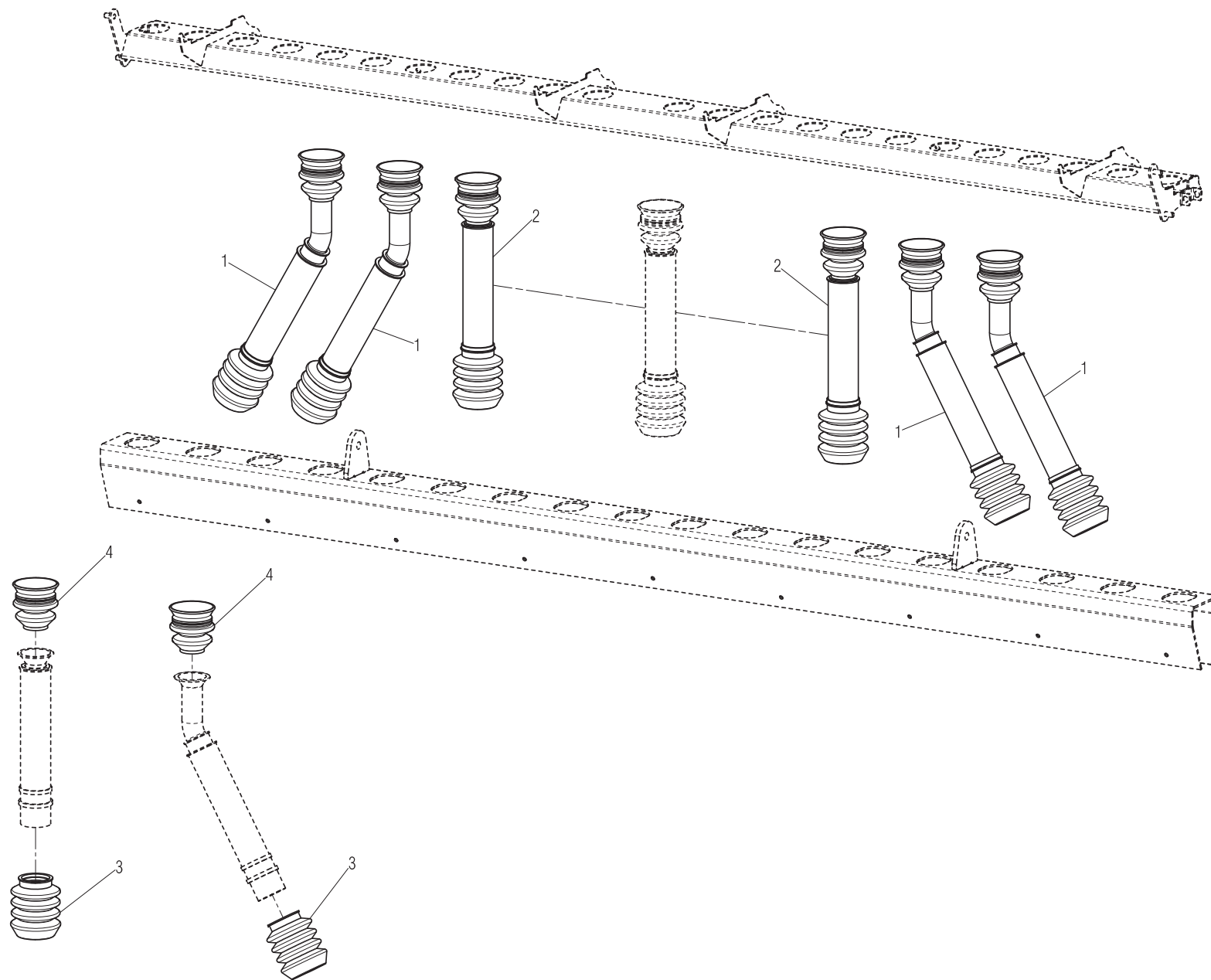


POS	CODICE	DESCRIZIONE	DESCRIPTION	DESCRIPTION	BENENNUNG	DESCRIPCION
1	F01010244	VITE M10X1,25X25 U5740 8.8 ZN	BOLT M10X1,25X25 U5740 8.8 ZN	VIS M 10X1,25X25	SCHRAUBE M 10X1,25X25	TORNILLO M 10X1,25X25
2	M43400707	FLANGIA SPESSORE	INNER FLANGE	LAGUE INTERIEUR	INNENFLANSCH	BRIDA INTERNA
3	M43400608	MOZZO CUSCINETTO OSCILLANTE	BEARING HUB	MOYEU	NABE	CUBO
4	F01220034	DADO M10X1,25 D980 8 ZN	NUT M10X1,25 D980 8 ZB	ECRO.M10X1,25 D980 8 ZB	MUTT.M10X1,25 D980 8 ZB	TUER.M10X1,25 D980 8 ZB
5	M38100990	GUARNIZIONE ELASTICA	GASKET	JOINT	DICHTUNG	JUNTA
6	M43400702	>SUPPORTO CUSC. OSCILLANTE H42	BEARING SUPPORT	SUPPORT ROULEMENT	LAGERHALTER	SOPORTE COJINETE
7	F04010184	CUSC.D40 D80 BOMB.18 6208 2RS1	BEARING D40 D80 BOMB.18 6208	ROULEMENT D40 D80 BOMB.18 6208	LAGER D40 D80 BOMB.18 6208 2RS	COJINETE D40 D80 BOMB.18 6208
8	M48000307	ANELLO RINF.40X50X1,5 C70	STIFFENER RING 40X50X1,5 C70	BAGUE DE RENFORCEM. 40X50X1,5	SEEGER RING 40X50X1,5 C70	ANILLO REFUERZO 40X50X1,5
9	F02050168	ANELLO E. DE 40X1,75 U7435 C70	SEEGER RING 40X1,75 U7435 C70	BAGUE SEEGER 40X1,75 U7435 C70	SEEGERRING 40X1,75 U7435 C70	ANIL.SEEGER 40X1,75 U7435 C70
10	M43400610	GUARN. METALLICA SP.1 SEMINAT.	METALIC GASKET SP.1	JOINT SP1	DICHTUNG SP1	JUNTA SP1
11	F01100012	ING.M 6X1 7663-B 9SMNPB28 ZN	SPHERE NIPPLE M6x17663-B ZB	GRAISSEUR A BILLES M6X1 7663-B	KUGELFETTBSCHSE M6X1 7663-B ZB	ENGGRAS.M6X1 7663-B 9SMNPB28
12	F01480123	ROS.G 12,5X22,9X 4 FLZNNC-240H	WASHER M12 ZGP EXTRA P.	RONDELLE M12 ZGP EXTRA P.	UNTERLEGSCHIEBE M12 ZGP EXTRA	ARANDELA M12 ZGP EXTRA P.
13	F01010283	VITE M12X1,25X30 U5740 8.8 ZN	BOLT M 12X1,25X30	VIS M 12X1,25X30	SCHRAUBE M 12X1,25X30	TORNILLO M 12X1,25X30
14	M75400340	GUARNIZIONE D=8	GASKET D=8	JOINT D=8	DICHTUNG D=8	JUNTA D=8
15	F04010183	CUSC.D30 D62 B16 6206C3 2RS	BEARING D30 D62 B16 6206C3 2RS	ROULEM. D30 D62 B16 6206C3 2RS	LAGER D30 D62 B16 6206C3 2RS	COJINETE D30 D62 B16 6206C32RS
16	F02050392	ANELLO E. DI 62X 2 U7437 C70	SEEGER RING E. 62X 2 U7437 C70	SEEGER E. 62X 2 U7437 C70	SEEGERING E. 62X 2 U7437 C70	ANILLO E. 62 X 2 U7437 C70
17	M75400339	ALBERO DI TRASMISSIONE	TRANSMISSION SHAFT	ARBRE TRANSMISSION	ANTRIEBSWELLE	EJE DE TRASMISION
18	F02050112	ANELLO E. DE 30X 1,5 U7435 C70	SEEGER RING 30X 1,5 U7435 C70	SEEGER E. 30 X 1,5 U7435 C70	SEEGERING E. 30X 1,5 U7435 C70	ANILLO E. 30 X 1,5 U7435 C70
19	G11220560	PIGNONE Z12 1/2-3/16 Q.16,4 ZN	PINION Z12 1/2-3/16	PIGNON Z12 1/2-3/16	RITZE Z12 1/2-3/16	PINION Z12 1/2-3/16
20	M75400335	DISTANZIALE ESAGONALE	SPACER	ENTRETOISE	DISTANZSTUECK	DISTANCIADOR
21	F01420048	ROS.M8 8,4X 24X 2 U6593 ZN	WASHER M8 8,4X 24X 2 U6593 ZN	RONDELLE M8 8,4X 24X2 U6593 ZN	SCHEIBE M8 8,4X 24X 2 U6593 ZN	ARANDELA M8 8,4X 24X2 U6593 ZN
22	F01020436	VITE M 8X1,25X 20 U5739 8.8 ZN	BOLT M8X1,25X20 U5739 8.8 ZN	VIS M8X1,25X20 U5739 8.8 ZN	SCHRA. M8X1,25X20 U5739 8.8 ZN	TORN. M8X1,25X20 U5739 8.8 ZN
23	F06080061	SP.CAT.1/2-3/16 118M.ISO 083-1	CHAIN 1/2-3/16 118M.ISO 083-1	CHAINE 1/2-3/16 118M.ISO 083-1	KETTE 1/2-3/16 118M.ISO 083-1	CADENA 1/2-3/16 118M.ISO 083-1
24	F01020403	VITE M6X1X16 U5739 8.8 ZN	BOLT M6X1X16 U5739 8.8 ZN	VIS M6X1X16 U5739 8.8 ZN	SCHRAUBE M6X1X16 U5739 8.8 ZN	TORNILLO M6X1X16 U5739 8.8 ZN
25	F01410037	ROS.M6 6,4X12,5X1,6 U6592 ZN	PLANE WASHER D.6	RONDELLE D.6	SCHEIBE D.6	ARANDELA D.6
26	M75400327	CARTER SUPERIORE	CARTER	CARTER	GEHAEUSE	CARTER
27	F01220022	DADO M 8X1,25 D980 8 ZN	NUT M8X 1,25 D980 8 ZN	ECROU M8X 1,25 D980 8 ZN	MUTTER M8X 1,25 D980 8 ZN	TUERCA M8X 1,25 D980 8 ZN
28	F01410051	ROS.M8 8,4X 17X1,6 U6592 ZN	WASHER M8 8,4X17X1,6 U6592 ZN	RONDEL. M8 8,4X17X1,6 U6592 ZN	SCHEIBE M8 8,4X17X1,6 U6592 ZN	ARANDELA M8 8,4X17X1,6 U6592ZN
29	G19001950	TENDICATENA SP. SP. 520	CHAIN STRETCHER SP. 520	TENDEUR DE CHAINE SP. 520	KETTENSPANNNER SP. 520	ENSOR DE CADENA SP. 520
30	F01010281	VITE M12X1,25X25 U5740 8.8 ZN	BOLT M 12X1,25X25	VIS M 12X1,25X25	SCHRAUBE M 12X1,25X25	TORNILLO M 12X1,25X25
31	F01010154	VIT.M18X 1,5X 80 U5738 8.8 ZN	BOLT M18X1,5X80 U5738 8.8 ZN	VIS M18X 1,5X 80 U5738 8.8 ZN	SCHRAUBE M18X1,5X 80 U5738 8.8	TORNILLO M18X1,5X80 U5738 8.8
32	F01410112	ROS.M18 19X 34X 3 U6592 ZN	WASHER M18 19X 34X 3 U6592 ZN	RONDELLE M18 19X34X 3 U6592 ZN	SCHEIBE M18 19X 34X 3 U6592 ZN	ARANDELA M18 19X 34X3 U6592 ZN
33	F01020451	VITE M 8X1,25X45 U5739 8.8 ZN	BOLT M8X 1.25X45 U5739 8.8 ZN	VIS M 8X45	SCHRAUBE M 8X45	TORNILLO M 8X45
34	M75400331	PIATTO	PLATE	PLAT	PLATTE	PLATO
35	F01220047	DADO M12X1,25 D980 8 ZN	NUT M12X1,25 D980 8 ZN	ECROU M12X1,25 D980 8 ZN	MUTTER M12X1,25 D980 8 ZN	TUERCA M12X1,25 D980 8 ZN
36	M33100606	DISTANZ. D=42,4 D=22,5 L=15	SPACER	ENTRETOISE	DISTANZSTUECK	DISTANCIADOR
37	M75400341	DISTANZIALE D42,4 D22,5 L20	SPACER	ENTRETOISE	DISTANZSTUECK	DISTANCIADOR
38	F01220081	DADO M18X 1,5 D980 8 ZN	SELF LOCKING NUT M18X1,5 980V	ECROU AUTOBL. M18X1,5 980-V	SELBSTSPMUTT. M18X1,5 980-V	DADO AUTOBL. M18X1,5 980-V
39	M75400325	CARTER INFERIORE	CARTER	CARTER	GEHAEUSE	CARTER
40	F02200595	SPINA SICUR. D. 5X30 ZN	PIN X GEAR	GOUJON	BOLZEN	ESPINA
41	M75415302	CARDANO INTERNO QUADRO 20X20	CARDAN Q.20X20	CARDAN Q.20X20	KARDAN Q.20X20	CARDANO Q.20X20
42	M75420302	CARDANO INTERNO QUADRO 20X20	CARDAN Q.20X20	CARDAN Q.20X20	KARDAN Q.20X20	CARDANO Q.20X20
43	M75425302	CARDANO INTERNO QUADRO 20X20	CARDAN Q.20X20	CARDAN Q.20X20	KARDAN Q.20X20	CARDANO Q.20X20
44	M75430302	CARDANO INTERNO QUADRO 20X20	CARDAN Q.20X20	CARDAN Q.20X20	KARDAN Q.20X20	CARDANO Q.20X20
45	M75415301	CARDANO ESTERNO QUADRO 25X25	CARDAN Q.25X25	CARDAN Q.25X25	KARDAN Q.25X25	CARDANO Q.25X25
46	M75420301	CARDANO ESTERNO QUADRO 25X25	CARDAN Q.25X25	CARDAN Q.25X25	KARDAN Q.25X25	CARDANO Q.25X25
47	M75425301	CARDANO ESTERNO QUADRO 25X25	CARDAN Q.25X25	CARDAN Q.25X25	KARDAN Q.25X25	CARDANO Q.25X25
48	M75430301	CARDANO ESTERNO QUADRO 25X25	CARDAN Q.25X25	CARDAN Q.25X25	KARDAN Q.25X25	CARDANO Q.25X25
49	M43400692	MOZZO CUSCINETTO OSCILL.H60	H60 BEARING HUB	MOYEU H60	NABE H60	CUBO H60
50	M43400703	SUPPORTO CUSCIN.OSCILLANTE H60	BEARING SUPPORT H=60	SUPPORT ROULEMENT H=60	LAGERHALTER H=60	SOPORTE COJINETE H60
51	M61100441	ANELLO T. 52X 90X 6 SPEC.	RING T. 52X 90X 6 SPEC.	0	0	0
52	F04010225	CUSC.D45 D100 B25 1726309-2RS1	BEARING D45 D100 B25 1726309-2	ROULEMENT D45 D100	LAGER D45 D100 B25 1726309-2RS	COJINETE D45 D100
53	F02010034	GHIERA AU.GUK M40X1,5 T.4H ZN	SELFLOCKING NUT M40X1,5 T.4H	COLLIER AUTOBL. M40X1,5	SELBSTSP. NUTMUTTER M40X1,5	VIROLA AUTOBL. M40X1,5
54	M43400705	GUARNIZIONE METALLICA H60	GASKET H60	0	0	0
55	M75400351	SPESSORE	PLATE	PLAQUETTE	PLATTE	PLAQUITA
56	M43400683	FIANCATA RULLO	ROLLER SIDE PANEL	COTE ROULEAU	WALZENSEITENWAND	FLANCO RODILLO
57	M43400619	FIANCATA RULLO	ROLLER SIDE PANEL	COTE ROULEAU	WALZENSEITENWAND	FLANCO RODILLO

**TAV. 060**



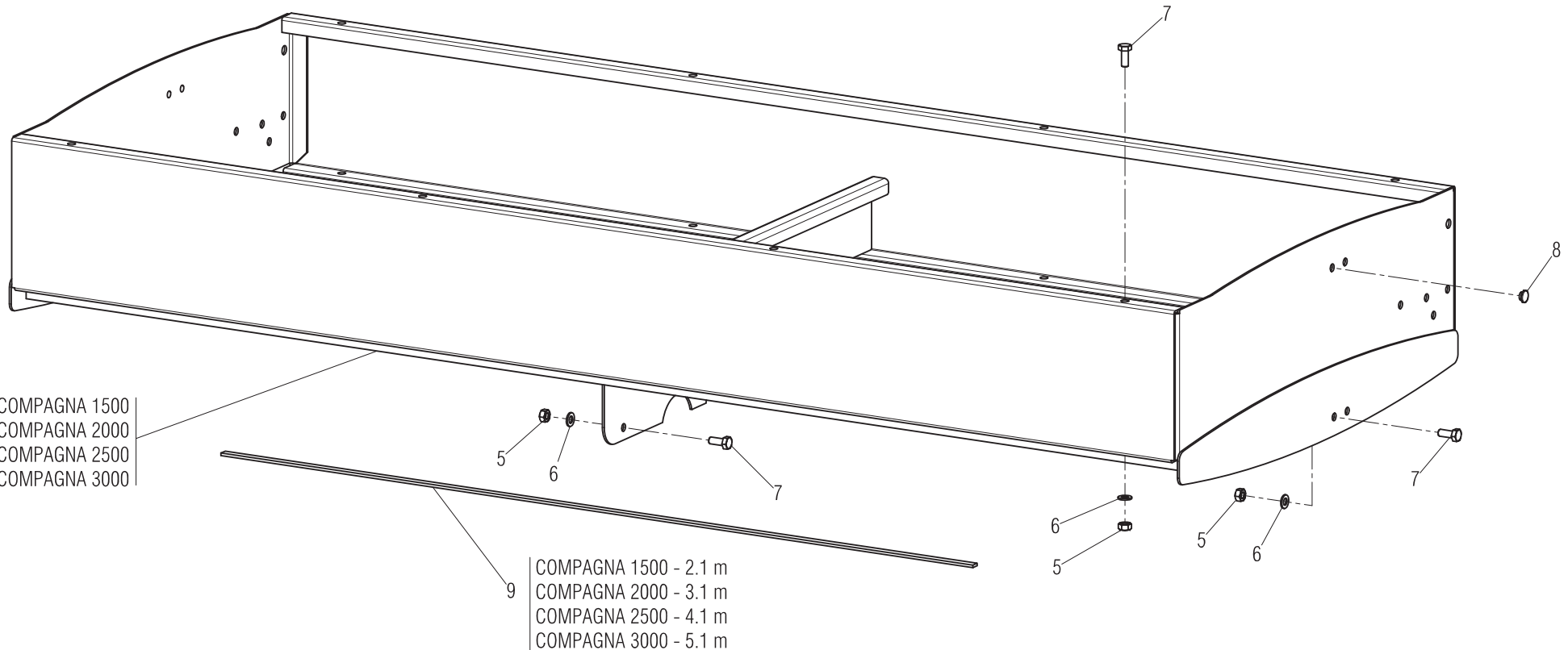
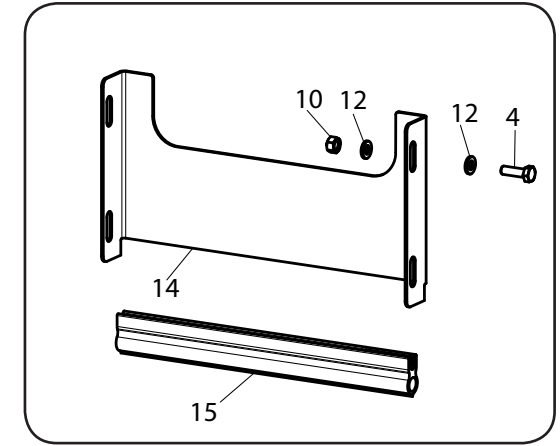
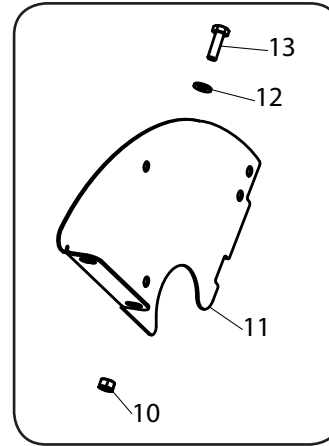
POS	CODICE	DESCRIZIONE	DESCRIPTION	DESCRIPTION	BENENNUNG	DESCRIPCION
1	M75415211	BUSSOLIERA SUPERIORE	UPPER TUBES HOLDER RACK	GRILLE PORTE-TUBE SUPERIEUR	OBERE ROHRHALTERUNG	BASTIDOR SOP.TUBOS SUPERIOR
2	M75420211	BUSSOLIERA SUPERIORE	UPPER TUBES HOLDER RACK	GRILLE PORTE-TUBE SUPERIEUR	OBERE ROHRHALTERUNG	BASTIDOR SOP.TUBOS SUPERIOR
3	G16221402	ASS.BUSSOLIERA 250	DL BUSH HOUSING SHAFT 250	ASS.PORTE-DOUILLES 250	MONTLOCHPLATTE 250	ENS. TRAVESAÑO PERFORADO 250
4	G16221282	ASS.BUSSOLIERA 300	DL BUSH HOUSING SHAFT 300	ASS.PORTE-DOUILLES 300	MONTLOCHPLATTE 300	ENS. TRAVESAÑO PERFORADO 300
5	F01220022	DADO M 8X1,25 D980 8 ZN	NUT M8X 1,25 D980 8 ZN	ECROU M8X 1,25 D980 8 ZN	MUTTER M8X 1,25 D980 8 ZN	TUERCA M8X 1,25 D980 8 ZN
6	G18803050	BOCCOLA 8,5X16X16 PL	BUSH 8,5X16X16 PL	DOUILLE 8,5X16X16 PL	BUCHSE 8,5X16X16 PL	ARANDELA 8,5X16X16 PL
7	G18904060	MOLLA CHIAVISTELLO BUSSOLIERA	SPRING	RESSORT	FEDER	MUELLE
8	G16341130	CHIAVISTEL.BLOCCO BUSSOLIERA.ZN	0	0	0	0
9	F02200162	COPIGLIA 3X 20 U1336 ZN	SPLIT PIN 3 X20 1336 GALVAN.	GOUPILLE 3 X20 1336 ZN	SPLINT 3 X20 1336 ZN	PASADOR 3 X20 1336 ZN
10	G16221580	PROTEZIONE MANIGLIA	HANDLE GUARD	0	0	0
11	F01060015	VITE M6X1X25 U5732 4.6 ZN	BOLT 6X25 5732 4.6 GALVANIZED	VIS 6X25 5732 4.6 ZN	SCHRAUBE 6X25 5732 4.6 ZN	TORNILLO 6X25 5732 4.6 ZN
12	F01220011	DADO M 6X 1 D980 8 ZN	NUT M6X1 D980 8 ZN	ECROU M6X1 D980 8 ZN	MUTTER M6X1 D980 8 ZN	TUERCA M6X1 D980 8 ZN
13	G16313831	RINFORZO SUPPORTO TRAMLINE	REINFORCEMENT	RENFORCE	VERSTARKUNG	REFUERZO
14	G16320673	SUPPORTO ALBERO TRAMLINE	SUPPORT	SUPPORT	HALTERUNG	SOPORTE
15	F01020440	VITE M 8X1,25X25 U5739 8.8 ZN	BOLT M8X1,25X25 U5739 8.8 ZN	VIS M8X1,25X25 U5739 8.8 ZN	SCHRA. M8X1,25X25 U5739 8.8 ZN	TORNIL.M8X1,25X25 U5739 8.8 ZN
16	F01410051	ROS.M8 8,4X 17X1,6 U6592 ZN	WASHER M8 8,4X17X1,6 U6592 ZN	RONDEL. M8 8,4X17X1,6 U6592 ZN	SCHEIBE M8 8,4X17X1,6 U6592 ZN	ARANDELA M8 8,4X17X1,6 U6592ZN
17	G16040130	RONDELLA FERMO DENTE ZN	STOP WASHER	RONDELLE D'ARRET	FESTSTELLSCHEIBE	ARANDELA DE BLOQUEO
18	F01060076	VITE M10X1,5X40 U5732 4.6 BR	SCREW M10X1,5X40 U5732 4.6 BR	VIS M10X1,5X40 U5732 4.6 BR	SCHRAUBE M10X1,5X40 U5732 4.6	TORNILLO M10X1,5X40 U5732 4.6
19	F06080487	CATENA AGGANCIO TELO IN GOMMA	RUBBER FRAME CONNECTION CHAIN	CHA+NE ACCROCHAGE TOILE EN CAO	KETTE BEFESTIGUNG GUMMITUCH	CADENA ENGANCHE LONA DE CAUCHO
20	F01200270	DADO M10X 1,5 U5588 6.8 ZN	NUT M10X 1,5 U5588 6.8 ZN	ECROU M10X 1,5 U5588 6.8 ZN	MUTTER M10X 1,5 U5588 6.8 ZN	TUERCA M10X 1,5 U5588 6.8 ZN
21	G16221420	VASCHETTA PROVA SEMINA	HOPPER SOWING TEST	TREMIE ASSAIE ENSEM.	TRICHTER SAATPROBE	TOLVA PRUEBA SIEMBRA
22	M75420214	VASCHETTA PROVA SEMINA	HOPPER SOWING TEST	TREMIE ASSAIE ENSEM.	TRICHTER SAATPROBE	TOLVA PRUEBA SIEMBRA
23	G16221250	VASCHETTA PROVA SEMINA	HOPPER SOWING TEST	TREMIE ASSAIE ENSEM.	TRICHTER SAATPROBE	TOLVA PRUEBA SIEMBRA





POS	CODICE	DESCRIZIONE	DESCRIPTION	DESCRIPTION	BENENNUNG	DESCRIPCION
1	M75400225	TUBO TELESCOPICO CURVO PROLUNG	TELESCOPIC TUBE	TUBE TELESCOPIQUE	TELESKOPROHR	TUBO TELESCOPICO
2	G07002741	TUBO TELESCOPICO CORTO	TELESCOPIC PIPE SHORT	TUBE TELESCOP COMPL COURT AVA	KURZES TELESKOPROHR	TUBO TELESCOPICO CORTO T
3	G07000126	CUFFIA ATTACCO SCARPETTA	SLIDE LINKAGE HOUSING	PROTECTEUR FIXATION SABOT	FALTENBALG	ENVOLTURA CONEXIN GUA APOYO GL
4	G07000127	CUFFIA SUP.TUBO TELESCOPICO	TELESCOPIC PIPE SUPP. HOUSING	PROTECTEUR SUP. TUBE TELESCOPI	OB. KASTEN TELESKOPROHR	ENVOLTURA SUP. TUBO TELESCOPIC

OPTIONAL

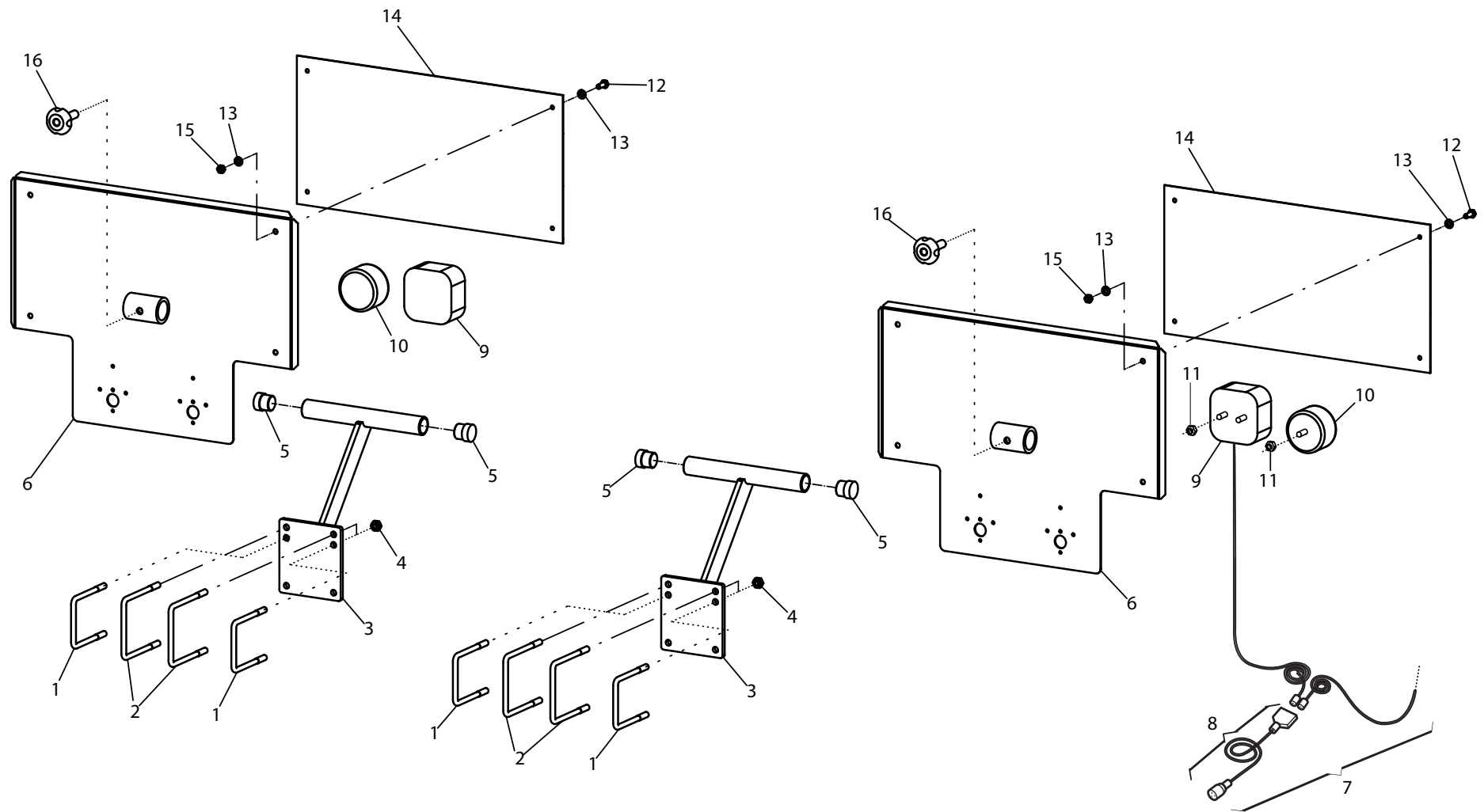


- 1 - COMPAGNA 1500
- 2 - COMPAGNA 2000
- 3 - COMPAGNA 2500
- 4 - COMPAGNA 3000

- COMPAGNA 1500 - 2.1 m
- COMPAGNA 2000 - 3.1 m
- COMPAGNA 2500 - 4.1 m
- COMPAGNA 3000 - 5.1 m

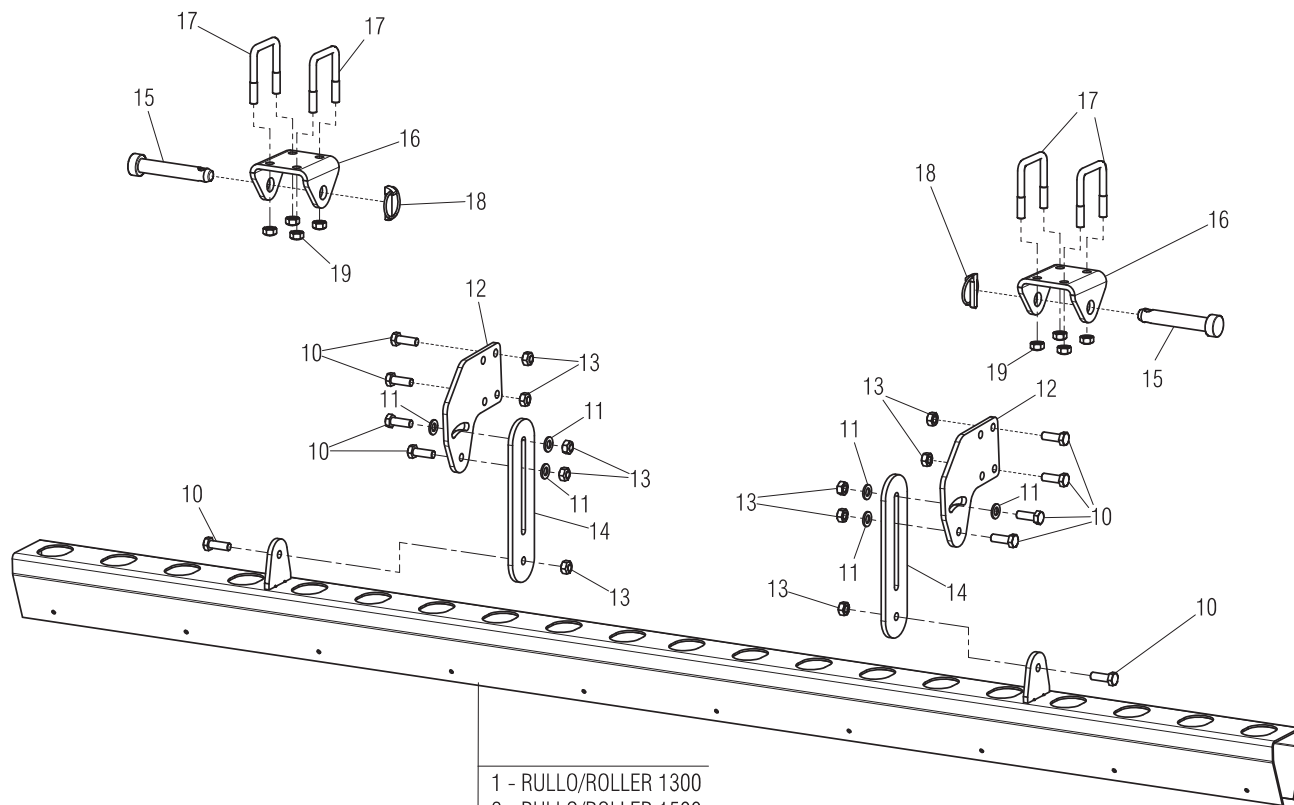
POS	CODICE	DESCRIZIONE	DESCRIPTION	DESCRIPTION	BENENNUNG	DESCRIPCION	<b>TAV. 080</b>
1	M75415159	RIALZO TRAMOGGIA	LIFT HOOPER ASSEMBLY	GR. HAUTEUR TREMIE	TRICHTERDECKEL	CONJ. REALCE DE LA TOLVA	
2	M75420159	RIALZO TRAMOGGIA	LIFT HOOPER ASSEMBLY	GR. HAUTEUR TREMIE	TRICHTERDECKEL	CONJ. REALCE DE LA TOLVA	
3	G16214383	ASS.RIALZO TRAMOGGIA 250	LIFT HOOPER ASSEMBLY	GR. HAUTEUR TREMIE	TRICHTERDECKEL	CONJ. REALCE DE LA TOLVA	
4	G16211485	ASS.RIALZO TRAMOGGIA 300	LIFT HOOPER ASSEMBLY	GR. HAUTEUR TREMIE	TRICHTERDECKEL	CONJ. REALCE DE LA TOLVA	
5	F01200244	DADO M 8X1,25 U5588 6.8 ZN	NUT M8 X1,25 U5588 6.8 ZN	ECROU M8 X1,25 U5588 6.8 ZN	MUTTER M8 X1,25 U5588 6.8 ZN	TUERCA M8 X1,25 U5588 6.8 ZN	
6	F01410051	ROS.M8 8,4X 17X1,6 U6592 ZN	WASHER M8 8,4X17X1,6 U6592 ZN	RONDEL. M8 8,4X17X1,6 U6592 ZN	SCHEIBE M8 8,4X17X1,6 U6592 ZN	ARANDELA M8 8,4X17X1,6 U6592ZN	
7	F01020436	VITE M 8X1,25X 20 U5739 8.8 ZN	BOLT M8X1,25X20 U5739 8.8 ZN	VIS M8X1,25X20 U5739 8.8 ZN	SCHRA. M8X1,25X20 U5739 8.8 ZN	TORN. M8X1,25X20 U5739 8.8 ZN	
8	F05100145	TAPPO PLASTCA D.9 X FORO 10	0	0	0	0	
9	F07100132	MOUSSE ADESIVA MM 5X3	ADESIVE ROLL BAND 5X3 MM	0	0	0	
10	F01200232	DADO M 6X 1 U5588 6.8 ZN	NUT 6 UNI 5588 6.8 GALVANIZED	ECROU 6 UNI 5588 6.8 ZN	MUTTER 6 UNI 5588 6.8 ZN	TUERCA 6 UNI 5588 6.8 ZN	
11	G16221450	SEPARATORE TRASVERSALE TRAM.	0	0	0	0	
12	F01410037	ROS.M6 6,4X12,5X1,6 U6592 ZN	PLANE WASHER D.6	RONDELLE D.6	SCHEIBE D.6	ARANDELA D.6	
13	F01020404	VITE M6X1X20 U5739 8.8 ZN	BOLT M 6X 1X20 U5739 8.8 ZN	VIS M 6X20	SCHRAUBE M 6X20	TORNILLO M 6X20	
14	G16221460	SEPARATORE TRAMOGGIA	0	0	0	0	
15	F03011087	GUARNIZIONE BATTUTA COPERCHIO	COVER RABBET GASKET	GARNITURE BUTEE COUVERCLE	DICHTUNG DECKELANSCHLAG	JUNTA DE TOPE TAPA	

**TAV.090**

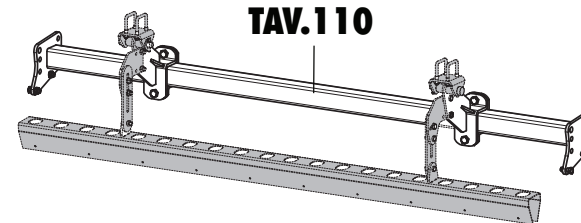


POS	CODICE	DESCRIZIONE	DESCRIPTION	DESCRIPTION	BENENNUNG	DESCRIPCION
1	F20110730	CAV.Q.M10X 1,5X 30 91X 99 ZN	STRIKER M10X 1,5X 30 91X 99 ZB	BUTEE M10X 1,5X 30 91X 99 ZB	ANSCHLAG M10X 1,5X 30 91X 99	EL. DE EMPALME M10X 1,5X 30
2	F20110726	CAV.Q.M10X 1,5X 30 111X122 ZG	U BOLT M10X 1,5X 30 111X122 ZG	ATTEL.M10X 1,5X 30 111X122 ZG	VERBI.M10X 1,5X 30 111X122 ZG	PERNO M10X 1,5X 30 111X122 ZG
3	M75400161	SUPPORTO TABELLE STRADALI	LIGHT-CHART SUPPORT	SUPPORT TABLEAU LUMIERES	TABELLENHALTERUNG LEUCHTEN	SOPORTE TABLA LUCES
4	F01220033	DADO M10X 1,5 D980 8 ZN	NUT M10X 1,5 D980 8 ZN	ECROU M10X 1,5 D980 8 ZN	MUTTER M10X 1,5 D980 8 ZN	TUERCA M10X 1,5 D980 8 ZN
5	G67008050	TERMINALE ROTONDO 28	ROUND END 28	PIECE TERMIN.RONDE 28	RUNDER ABSCHLUSS 28	TERMINAL REDONDO 28
6	G16715250	SUPPORTO TABELLA	0	0	0	0
7	G17912000	KIT LUCI EUROTRIS COMPL	0	0	0	0
8	F05010080	CABLAGGIO PER KIT LUCI	LIGHT WIRING HARNESS	CABLAGE KIT PHARES	VERKABELUNG LAMPENKIT	CABLEADO JUEGO LUCES
9	F05010076	FANALE X KIT LUCI	LAMP KIT LIGHTS COMPL.	FEU KIT ECLAIRAGE COMPL.	LAMPEN KIT LICHT KOMPL.	FAROL SET LUCES COMPL.
10	F05010221	CATARIFRANGENTE TONDO D.80 >	D.80 ROUND REFLECTOR	CATADIOPTRE ROND D.80	RUNDER R_CKSTRAHLER D.80	PAPEL REFRACTARIO REDONDO D.80
11	F01220200	DADO M 5X 0,8 D980 8 ZN	NUT M5X 0,8 D980 8 ZN	ECROU M5X 0,8 D980 8 ZN	MUTTER M5X 0,8 D980 8 ZN	TUERCA M5X 0,8 D980 8 ZN
12	F01202436	VITE M 8X1,25X 20 U5739 8.8 ZN	BOLT M8X1,25X20 U5739 8.8 ZN	VIS M8X1,25X20 U5739 8.8 ZN	SCHRA. M8X1,25X20 U5739 8.8 ZN	TORN. M8X1,25X20 U5739 8.8 ZN
13	F01410051	ROS.M8 8,4X 17X1,6 U6592 ZN	WASHER M8 8,4X17X1,6 U6592 ZN	RONDEL. M8 8,4X17X1,6 U6592 ZN	SCHEIBE M8 8,4X17X1,6 U6592 ZN	ARANDELA M8 8,4X17X1,6 U6592ZN
14	F05010357	N.2 PANNELLI CARICHI SPORGENTI	N.2 JUTTING LOAD PANELS	N.2 PANNEAUX CHARGES SAILLANT	N.2 TAFELN VORSPRINGENDE LADUN	2 PANELES CARGADOS SALIENTES
15	F01220022	DADO M 8X1,25 D980 8 ZN	NUT M8X 1,25 D980 8 ZN	ECROU M8X 1,25 D980 8 ZN	MUTTER M8X 1,25 D980 8 ZN	TUERCA M8X 1,25 D980 8 ZN
16	F06220010	VOLANTINO 4 LOBI M12X25	8-LOBE HANDWHEEL M12X25	VOLANT 8 LOBES M12X25	HANDRAD 8 BUCKEL M12X25	VOLANTE 8 LOBI M12X25

**TAV.100**

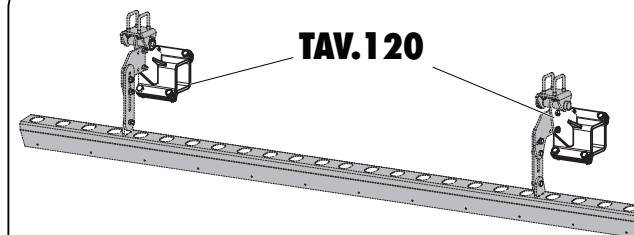


- 1 - RULLO/ROLLER 1300
- 2 - RULLO/ROLLER 1500
- 3 - RULLO/ROLLER 1800
- 4 - RULLO/ROLLER 2000
- 5 - RULLO/ROLLER 2300
- 6 - RULLO/ROLLER 2500
- 7 - RULLO/ROLLER 2800
- 8 - RULLO/ROLLER 3000
- 9 - RULLO/ROLLER 3300



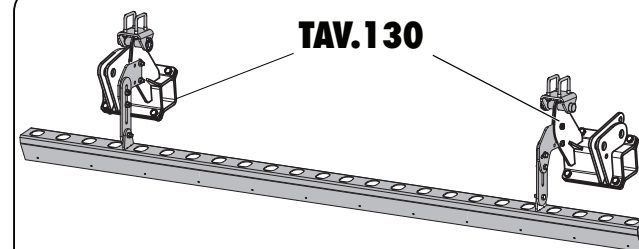
**TAV.110**

**DL-DLS**



**TAV.120**

**DS-DC-DCR-DM-DMR-ORSO  
B-C-SC**



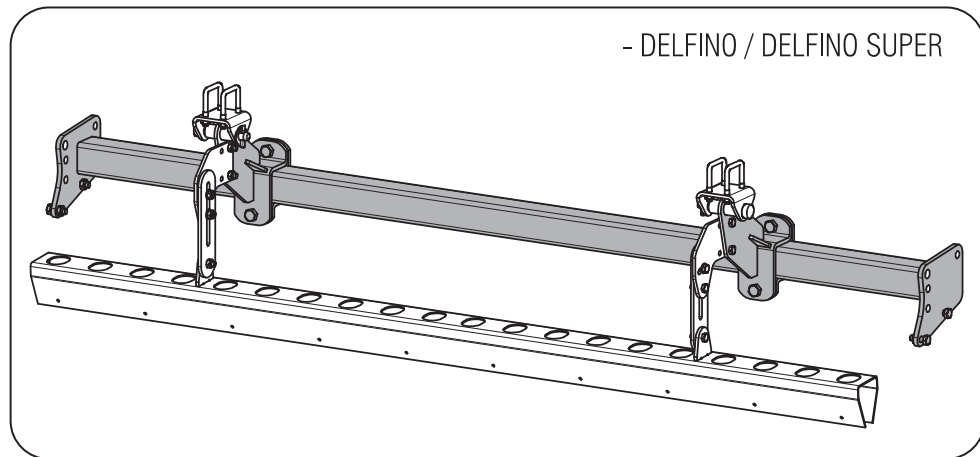
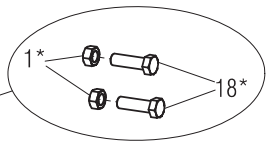
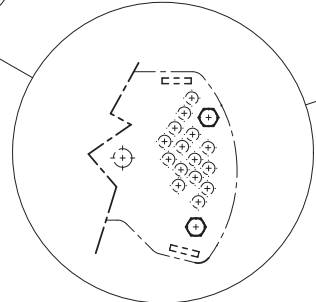
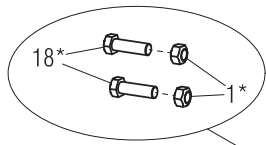
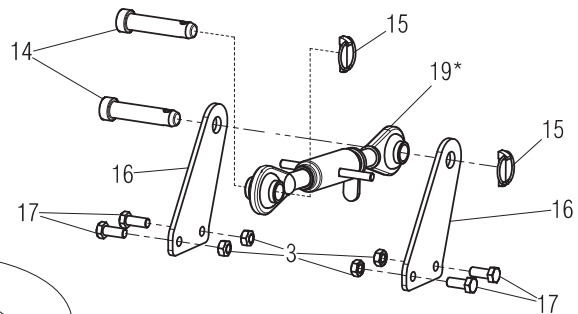
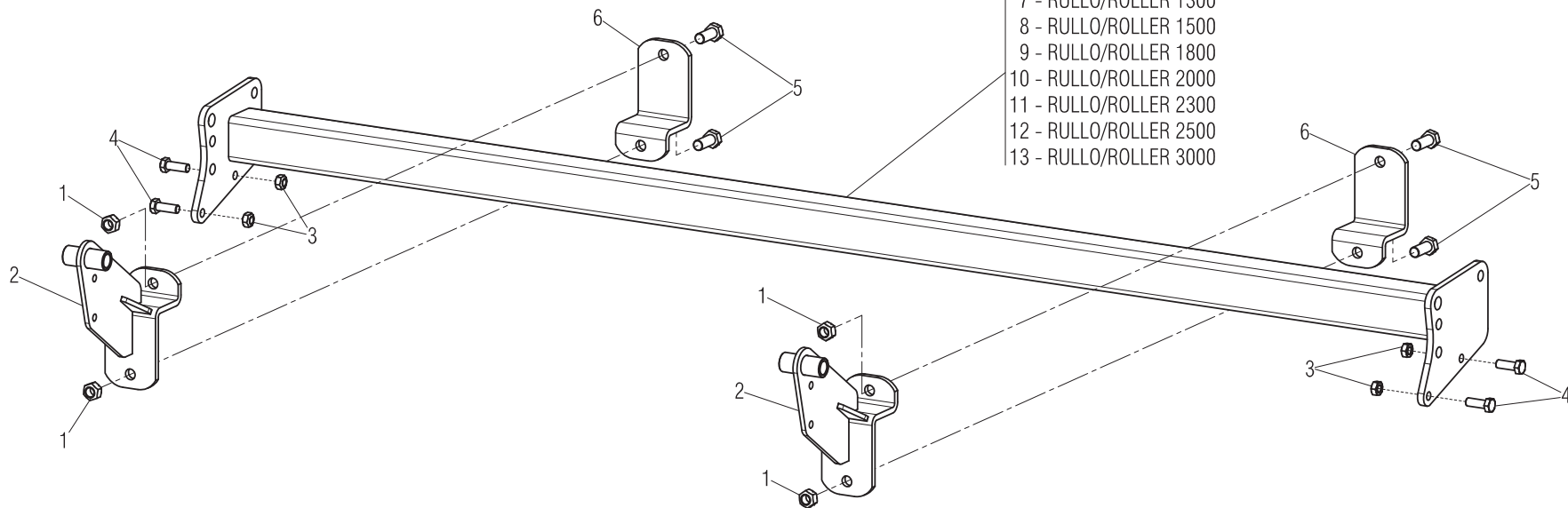
**TAV.130**

**PRESTO**

POS	CODICE	DESCRIZIONE	DESCRIPTION	DESCRIPTION	BENENNUNG	DESCRIPCION
1	M75413207	BUSSOLIERA INFERIORE	TUBES LOWER SUPPORT	SUPPORT INFERIEUR TUBES	BUCHSENHALTERUNG	PLACA INFERIOR SOPORTE TUBOS
2	M75415207	BUSSOLIERA INFERIORE	TUBES LOWER SUPPORT	SUPPORT INFERIEUR TUBES	BUCHSENHALTERUNG	PLACA INFERIOR SOPORTE TUBOS
3	M75418207	BUSSOLIERA INFERIORE	TUBES LOWER SUPPORT	SUPPORT INFERIEUR TUBES	BUCHSENHALTERUNG	PLACA INFERIOR SOPORTE TUBOS
4	M75420207	BUSSOLIERA INFERIORE	TUBES LOWER SUPPORT	SUPPORT INFERIEUR TUBES	BUCHSENHALTERUNG	PLACA INFERIOR SOPORTE TUBOS
5	M75423207	BUSSOLIERA INFERIORE	TUBES LOWER SUPPORT	SUPPORT INFERIEUR TUBES	BUCHSENHALTERUNG	PLACA INFERIOR SOPORTE TUBOS
6	M75425207	BUSSOLIERA INFERIORE	TUBES LOWER SUPPORT	SUPPORT INFERIEUR TUBES	BUCHSENHALTERUNG	PLACA INFERIOR SOPORTE TUBOS
7	M75428207	BUSSOLIERA INFERIORE	TUBES LOWER SUPPORT	SUPPORT INFERIEUR TUBES	BUCHSENHALTERUNG	PLACA INFERIOR SOPORTE TUBOS
8	M75430207	BUSSOLIERA INFERIORE	TUBES LOWER SUPPORT	SUPPORT INFERIEUR TUBES	BUCHSENHALTERUNG	PLACA INFERIOR SOPORTE TUBOS
9	M75433207	BUSSOLIERA INFERIORE	TUBES LOWER SUPPORT	SUPPORT INFERIEUR TUBES	BUCHSENHALTERUNG	PLACA INFERIOR SOPORTE TUBOS
10	F01010288	VITE M12X1,25X35 U5740 8.8 ZN	BOLT M12X1,25X35 U5740 8.8 ZN	VIS M12X1,25X35 U5740 8.8 ZN	SCHR.M12X1,25X35 U5740 8.8 ZN	TORN.M12X1,25X35 U5740 8.8 ZN
11	F01410076	ROS.M12 13X 24X2,5 U6592 ZN	WASHER D12 U6592 ZN	RONDELLE D12 U6592 ZN	SCHEIBE D12 U6592 ZN	ARANDELA D12 U6592 ZN
12	M75400210	PIATTO COLLEGAM.INTERMEDIO ZN	PLATE	PLAQUETTE	PLATTE	PLAQUITA
13	F01220047	DADO M12X1,25 D980 8 ZN	NUT M12X1,25 D980 8 ZN	ECROU M12X1,25 D980 8 ZN	MUTTER M12X1,25 D980 8 ZN	TUERCA M12X1,25 D980 8 ZN
14	M75400229	PIASTRA PRIMARIA ZN	PLATE	PLAQUETTE	PLATTE	PLAQUITA
15	F20100047	PERNO D22 L108 C43 ZN	BOLT D22 L108 C43 ZN	GOUJON SUPPORT	BOLZEN	PERNO SOPORTE
16	M75400510	STAFFA ZN	STIRRUP	ETRIER	BUEGEL	ESTRIBO
17	F20110742	CAV.Q.B=60 M=12X1,75L=84	0	0	0	0
18	F02200529	SPINA SCATTO D.11 ZN	SNAP PIN D.11	FICHE A DETENTE D.11	EINRASTSTIFT D.11	CLAVIJA DE MUELLE D.11
19	F01220048	DADO M12X1,75 D980 8 ZN	NUT M12X1,75 D980 8 ZN	ECROU M12X1,75 D980 8 ZN	SCHEIBE M12X1,75 D980 8 ZN	TUERCA M12X1,75 D980 8 ZN

**TAV. 110**

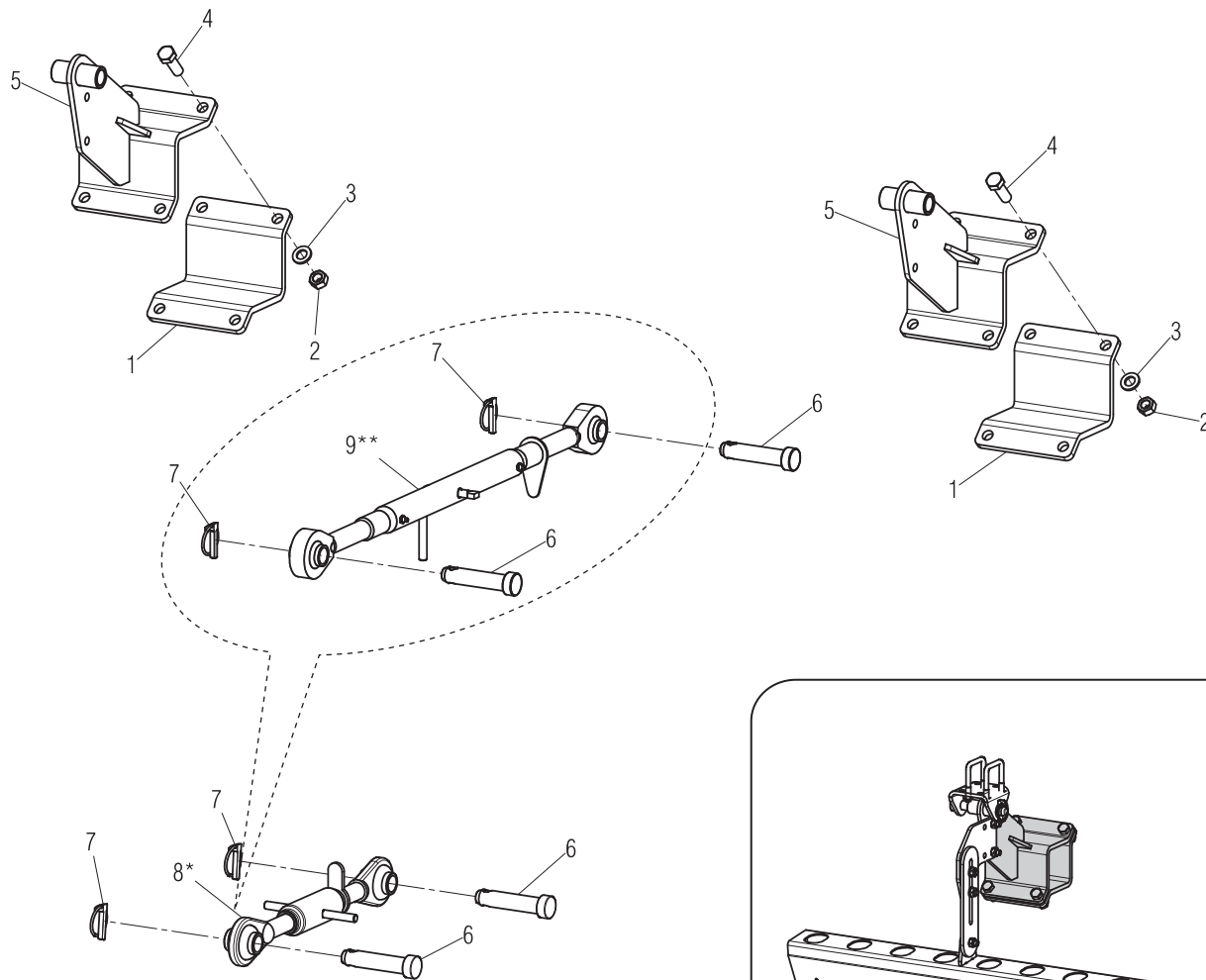
- 7 - RULLO/ROLLER 1300
- 8 - RULLO/ROLLER 1500
- 9 - RULLO/ROLLER 1800
- 10 - RULLO/ROLLER 2000
- 11 - RULLO/ROLLER 2300
- 12 - RULLO/ROLLER 2500
- 13 - RULLO/ROLLER 3000





POS	CODICE	DESCRIZIONE	DESCRIPTION	DESCRIPTION	BENENNUNG	DESCRIPCION
1	F01220081	DADO M18X 1,5 D980 8 ZN	SELF LOCKING NUT M18X1,5 980V	ECROU AUTOBL. M18X1,5 980-V	SELBSTSP.MUTT. M18X1,5 980-V	DADO AUTOBL. M18X1,5 980-V
2	M75400507	SUPP. SEMINATRICE VERSIONE DL	SUPPORT	SUPPORT	HALTERUNG	SOPORTE
3	F01220059	DADO M14X 1,5 D980 8 ZN	NUT M14X 1,5 D980 8 ZB	ECROU M14X 1,5 D980 8 ZB	MUTTER M14X 1,5 D980 8 ZB	TUERCA M14X 1,5 D980 8 ZB
4	F01010318	VITE M14X 1,5X40 U5740 8.8 ZN	BOLT M 14X1,5X40	VIS M 14X1,5X40	SCHRAUBE M 14X1,5X40	TORNILLO M 14X1,5X40
5	F01010362	VITE M18X1,5 X45 U5740 8.8 ZN	BOLT M 18X1,5X45	VIS M 18X1,5X45	SCHRAUBE M 18X1,5X45	TORNILLO M 18X1,5X45
6	M33100572	STAFFA PER ATTACCO BARRE DL	STIRRUP LINKAGE BAR	ETRIER D'ATTELAGE BARRE	BUEGEL VERB. SCHUTZHOLM	ESTRIBO ATAQUE BARRA
7	M75413513	COMP.TRAVE ANT. RULLO 1300	ROLLER FRONT BEAM 1300	POUTRE ROULEAU 1300	WALZE HAUPTTRAEGER 1300	VIGA ANTERIOR RODILLO 1300
8	M75415513	COMP.TRAVE ANT. RULLO 1500	ROLLER FRONT BEAM 1500	POUTRE ROULEAU 1500	WALZE HAUPTTRAEGER 1500	VIGA ANTERIOR RODILLO 1500
9	M75418513	COMP.TRAVE ANT. RULLO 1800	ROLLER FRONT BEAM 1800	POUTRE ROULEAU 1800	WALZE HAUPTTRAEGER 1800	VIGA ANTERIOR RODILLO 1800
10	M75420513	COMP.TRAVE ANT. RULLO 2000	ROLLER FRONT BEAM 2000	POUTRE ROULEAU 2000	WALZE HAUPTTRAEGER 2000	VIGA ANTERIOR RODILLO 2000
11	M75423513	COMP.TRAVE ANT. RULLO 2300	ROLLER FRONT BEAM 2300	POUTRE ROULEAU 2300	WALZE HAUPTTRAEGER 2300	VIGA ANTERIOR RODILLO 2300
12	M75425513	COMP.TRAVE ANT. RULLO 2500	ROLLER FRONT BEAM 2500	POUTRE ROULEAU 2500	WALZE HAUPTTRAEGER 2500	VIGA ANTERIOR RODILLO 2500
13	M75430513	COMP.TRAVE ANT. RULLO 3000	ROLLER FRONT BEAM 3000	POUTRE ROULEAU 3000	WALZE HAUPTTRAEGER 3000	VIGA ANTERIOR RODILLO 3000
14	F20100063	PERNO D25 L91 C40 ZN	PIN D25 L91 C43 ZN	BOULON D25 L91 C43 ZN	BOLZEN D25 L91 C43 ZN	PERNO D25 L91 C43 ZN
15	F02200529	SPINA SCATTO D.11 ZN	SNAP PIN D.11	FICHE A DETENTE D.11	EINRASTSTIFT D.11	CLAVIJA DE MUELLE D.11
16	M75400516	PIASTRA ATTACCO SUPERIORE ZN	FIXING PLATE	PLAQUE DE RACCORD	KUPPLUNGSPLATTE	PLACA DE CONEXIN
17	F01010317	VITE M14X1,5X35 U5740 8.8 ZN	BOLT M14X1,5X35 U5740 8.8 ZN	VIS M 14X1,5X35	SCHRAUBE M 14X1,5X35	TORNILLO M 14X1,5X35
18	F01010151	VITE M18X1,5X60 U5738 8.8 ZN	BOLT M18X1,5X60	VIS M18X1,5X60	SCHRAUBE M18X1,5X60	TORNILLO M18X1,5X60
19	F02450015	MART*M.L= 330 L= 270 D=25,4 ZG	0	0	0	0
20	F20300005	MART*M.L= 970 L= 650 D=25,5 ZN	TIE-ROD L=970 L=650 D=25,5	TRINGLE L=970 L=650 D=25,5 ZN	VERST.ROHR L=970 L=650 D=25,5	SENSOR L= 970 L= 650 D=25,5 ZN

# TAV. 120

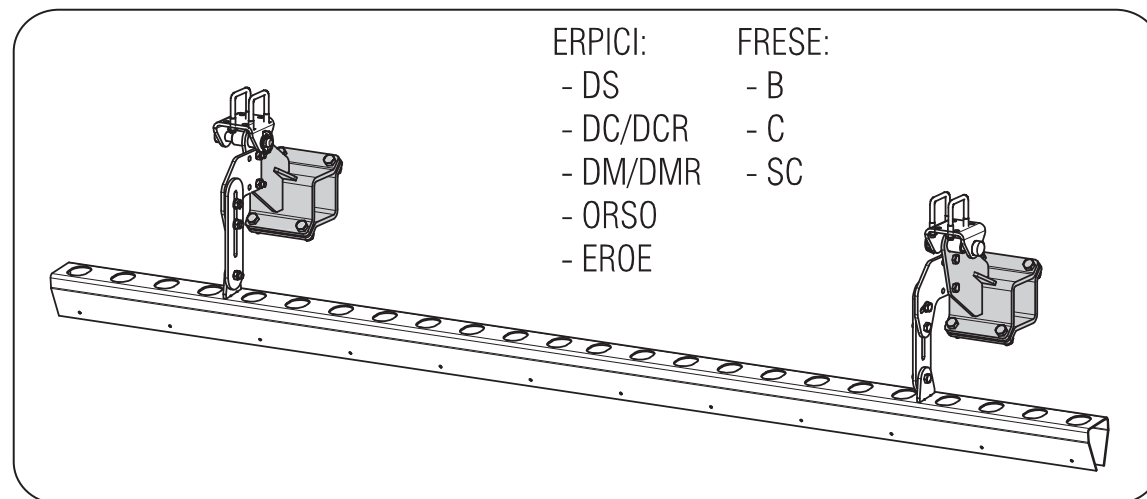


**\*SOLO ERPICI:**  
**\*ONLY POWER HARROWS:**

- DS
- DC/DCR
- DM/DMR
- ORSO
- EROE

**\*\*SOLO FRESE:**  
**\*\*ONLY ROTARY TILLERS:**

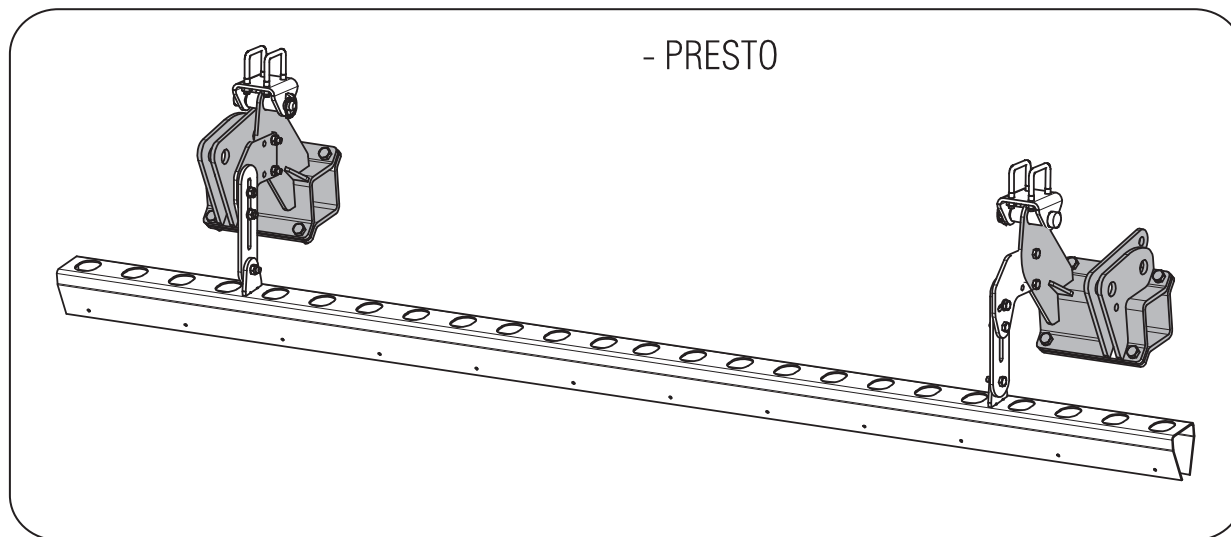
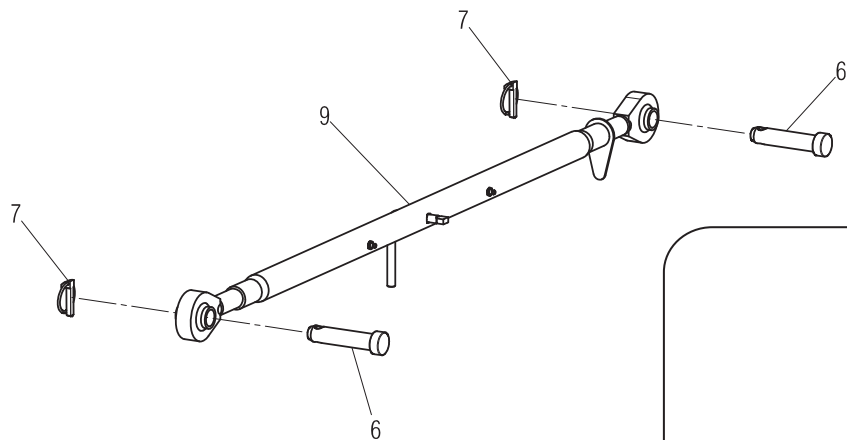
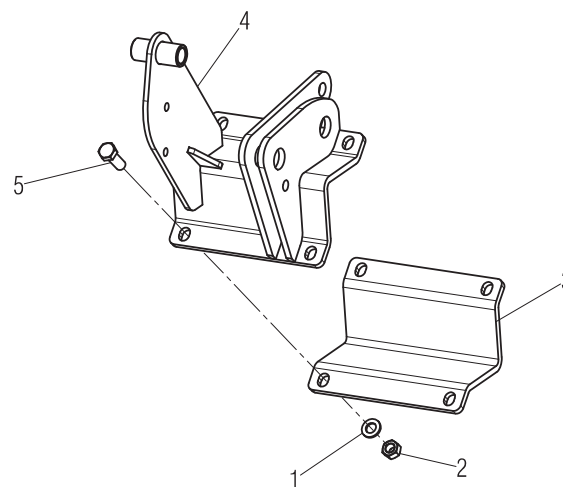
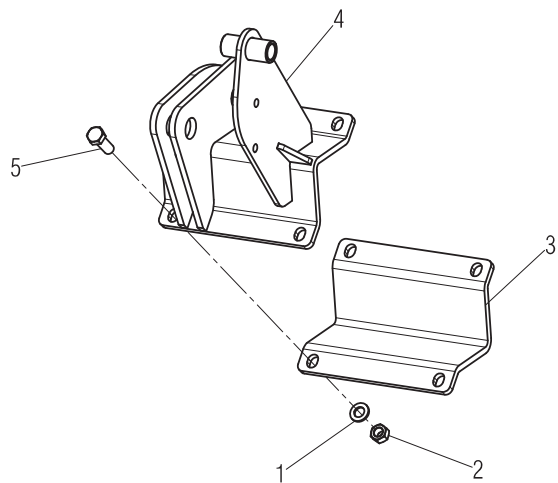
- B
- C
- SC



ERPICI:	FRESE:
- DS	- B
- DC/DCR	- C
- DM/DMR	- SC
- ORSO	
- EROE	

POS	CODICE	DESCRIZIONE	DESCRIPTION	DESCRIPTION	BENENNUNG	DESCRIPCION
1	M36200554	STAFFA ATTACCO	STIRRUP LINKAGE	ATTELAGE ETRIER	BUEGELLINK	ESTRIBO ATAQUE
2	F01220070	DADO M16X 1,5 D980 8 ZN	NUT M16X 1,5 D980 8 ZB	ECRO.M16X 1,5 D980 8 ZB	MUTT.M16X 1,5 D980 8 ZB	TUER.M16X 1,5 D980 8 ZB
3	F01410100	ROS.M16 17X 30X 3 U6592 ZN	WASHER M16 17X30X3 U6592 ZN	RONDELLE M16 17X30X3 U6592 ZN	SCHEIBE M16 17X30X3 U6592 ZN	ARANDELA M16 17X30X3 U6592 ZN
4	F01010341	VITE M16X1,5 X45 U5740 8.8 ZN	BOLT M16X1,5 X45 U5740 8.8 ZB	VIS M16X1,5 X45 U5740 8.8 ZB	SCHR.M16X1,5 X45 U5740 8.8 ZB	TORN.M16X1,5 X45 U5740 8.8 ZB
5	M75400518	SUP. SEMINAT.VERS.TUBO 100X100	SUPPORT 100X100 TUBE	SUPPORT TUBE 100X100	HALTER ROHR 100X100	SOPORTE TUBE 100X100
6	F20100063	PERNO D25 L91 C40 ZN	PIN D25 L91 C43 ZN	BOULON D25 L91 C43 ZN	BOLZEN D25 L91 C43 ZN	PERNO D25 L91 C43 ZN
7	F02200529	SPINA SCATTO D.11 ZN	SNAP PIN D.11	FICHE A DETENTE D.11	EINRASTSTIFT D.11	CLAVIJA DE MUELLE D.11
8	F02450015	MART*M.L= 330 L= 270 D=25,4 ZG	0	0	0	0
9	F20300005	MART*M.L= 970 L= 650 D=25,5 ZN	TIE-ROD L=970 L=650 D=25,5	TRINGLE L=970 L=650 D=25,5 ZN	VERST.ROHR L=970 L=650 D=25,5	TENSOR L= 970 L= 650 D=25,5 ZN

**TAV. 130**



POS	CODICE	DESCRIZIONE	DESCRIPTION	DESCRIPTION	BENENNUNG	DESCRIPCION
1	F01410100	ROS.M16 17X 30X 3 U6592 ZN	WASHER M16 17X30X3 U6592 ZN	RONDELLE M16 17X30X3 U6592 ZN	SCHEIBE M16 17X30X3 U6592 ZN	ARANDELA M16 17X30X3 U6592 ZN
2	F01220070	DADO M16X 1,5 D980 8 ZN	NUT M16X 1,5 D980 8 ZB	ECRO.M16X 1,5 D980 8 ZB	MUTT.M16X 1,5 D980 8 ZB	TUER.M16X 1,5 D980 8 ZB
3	M44400403	STAFFA ATTACCO RULLO	ROLLER CONNECTION SUPPORT	SUPPORT ROULEAU DROITE	SCHÜTZHOLM WALZE	SOPORTE RODILLO DERECHA
4	M75400532	SUPP. SEMINATRICE	SUPPORT	SUPPORT	HALTERUNG	SOPORTE
5	F01010341	VITE M16X1,5 X45 U5740 8.8 ZN	BOLT M16X1,5 X45 U5740 8.8 ZB	VIS M16X1,5 X45 U5740 8.8 ZB	SCHR.M16X1,5 X45 U5740 8.8 ZB	TORN.M16X1,5 X45 U5740 8.8 ZB
6	F20100063	PERNO D25 L91 C40 ZN	PIN D25 L91 C43 ZN	BOULON D25 L91 C43 ZN	BOLZEN D25 L91 C43 ZN	PERNO D25 L91 C43 ZN
7	F02200529	SPINA SCATTO D.11 ZN	SNAP PIN D.11	FICHE A DETENTE D.11	EINRASTSTIFT D.11	CLAVIJA DE MUELLE D.11
8	F20300002	MART*M.L=1650 L=1250 D=25,5 ZN	TIE-ROD L=1650 L=1250 D=25,5	TRINGLE L=1650 L=1250 D=25,5	ZUGSTANGE L=1650 L=1250 D=25,5	TIRANTE L=1650 L=1250 D=25,5

**RICHIEDETE SEMPRE RICAMBI ORIGINALI MARCHIATI  GARANZIA DI ASSOLUTA QUALITÀ!  
 USE  GENUINE PARTS ONLY, A GUARANTEE OF ABSOLUTE QUALITY!  
 BENUTZEN SIE NUR ORIGINALTEILE MIT DEM EINGEPRÄGTEN  DIE GARANTIE FÜR ABSOLUTE QUALITÄT  
 EXIGEZ LES PIÈCES DE RECHANGE ESTAMPILLES  GARANTIE DE QUALITE ABSOLUE  
 UTILICEN REPUESTOS ORIGINALES  GARANTIA Y FIABILIDAD**

**La garanzia MASCHIO sulle macchine ha valore solo se utilizzate Ricambi Originali  
 MASCHIO Warranty will only cover machines that are fitted with genuine Maschio parts  
 Nur der Einsatz von MASCHIO Originalteilen sichert Ihnen die Garantie für Ihre MASCHIO-Geräte  
 Les garanties ne s'appliquent que pour les machines équipées de pièces d'origine MASCHIO  
 MASCHIO garantiza sus maquinas solo en caso de que esten equipadas con recambios originales**



**Agip ROTRA MP**

CLASSIFICAZIONE SAE 85W/140

L'olio **AGIP ROTRA MP** soddisfa le seguenti specifiche:  
**AGIP ROTRA MP** oil complies with the following specifications:  
 Das Öl **ROTRA MP** entspricht den folgenden Normen:  
 L'huile **AGIP ROTRA MP** satisfait les spécifications suivantes:  
 L'aceite **AGIP ROTRA MP** satisfa los siguientes normas:

- API GL5  
 - MIL-L-2105C



**Agip GR MU EP2**

Il grasso **AGIP GR MU EP 2** soddisfa le seguenti specifiche:  
**AGIP GR MU EP 2** grease complies with the following specifications:  
 Das Fett **AGIP GR MU EP 2** entspricht den folgenden Normen:  
 La graisse **AGIP GR MU EP 2** satisfait les spécifications suivantes:  
 La grasa **AGIP GR MU EP 2** satisfa los siguientes normas:

- DIN 51825 (KP2K)



**MASCHIO GASPARDO S.p.A.**  
 Registered office & Production plant  
 Via Marcello, 73  
 I-35011 Campodarsego (Padova) Italy  
 Tel. +39 049 9289810  
 Fax +39 049 9289900  
 www.maschionet.com  
 info@maschio.com

**GASPARDO**

**MASCHIO GASPARDO SpA**  
 Production plant  
 Via Mussons, 7 - 33075  
 Morsano al Tagliamento (PN) - Italy  
 Tel. +39 0434 695410  
 Fax +39 0434 695425  
 Email: info@gaspardo.it

**MASCHIO DEUTSCHLAND GmbH**  
 Äußere Nürnberger Straße 5  
 D-91177 Thalmaßing  
 Deutschland  
 Tel. +49 (0) 9173 79000  
 Fax +49 (0) 9173 790079  
 e-mail: dialog@maschio.de

**MASCHIO-GASPARDO USA, Inc.**  
 120 North Scott Park Road  
 Eldridge, IA 52748 - USA  
 Ph. +1 563 - 285 9937  
 Fax +1 563 - 285 9938  
 e-mail: info@maschio.us

**MASCHIO FRANCE S.a.r.l.**  
 1 rue Denis Papin  
 45240 LA FERTE SAINT AUBIN  
 France  
 Tel. +33 (0) 2.38.64.12.12  
 Fax +33 (0) 2.38.64.66.79  
 e-mail: info@maschio.fr

**MASCHIO-GASPARDO ROMANIA S.R.L.**  
 Strada Înfrăţirii, F.N.  
 315100 Chisineu-Cris (Arad) - România  
 Tel. +40 257 307030  
 Fax +40 257 307040  
 e-mail: info@maschio.ro

**000 МАСКИО-ГАСПАРДО РУССИЯ**  
 Улица Пушкина, 117 Б  
 404126 Волжский - Волгоградская область  
 Тел. +7 8443 515152  
 факс. +7 8443 515153  
 e-mail: info@maschio.ru

**MASCHIO-GASPARDO POLAND**  
**MASCHIO-GASPARDO UCRAINA**  
**GASPARDO-MASCHIO TURCHIA**  
**MASCHIO-GASPARDO CINA**