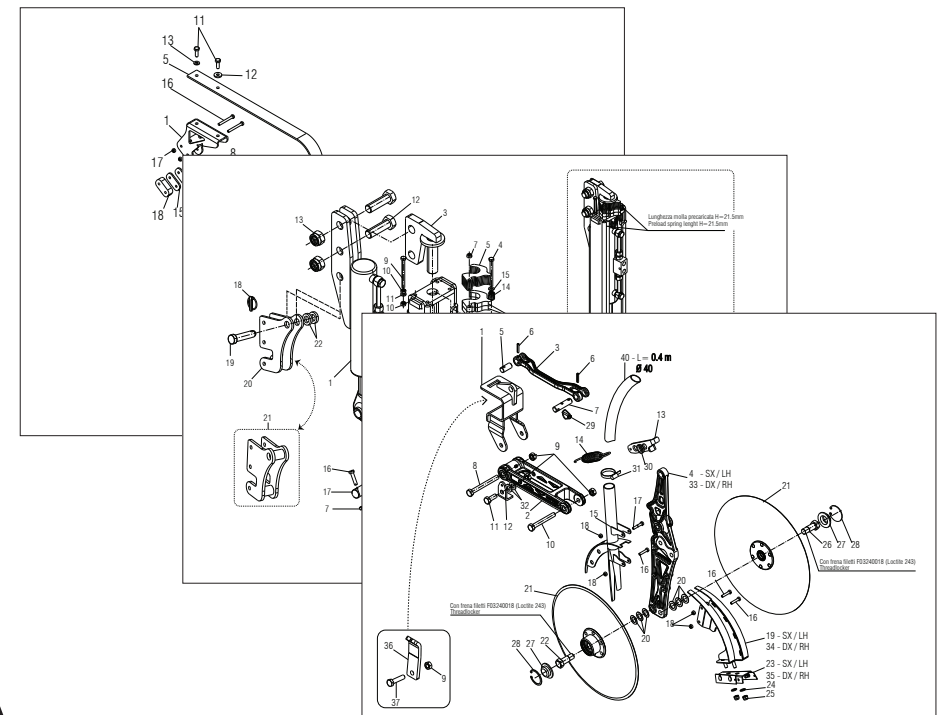


MASCHIO GASPARDO S.p.A.



PERFECTA

Cod: F07011101 2014-03

- *) Valido per Paesi UE
- *) Valid for EU member countries
- *) Valable dans les Pays UE
- *) Gilt für EU-Mitgliedsländer
- *) Válido para Países UE

- IT** PARTI DI RICAMBIO
- EN** SPARE PARTS
- DE** ERSATZTEILE
- FR** PIÈCES DÉTACHÉES
- ES** PIEZAS DE REPUESTO

ITALIANO	ENGLISH	DEUTSCH	FRANÇAIS	ESPAÑOL
PARTI DI RICAMBIO	SPARE PARTS	ERSATZTEILE	PIECES DÉTACHÉES	RESPUESTOS
<p>Le ordinazioni delle parti di ricambio vanno fatte presso i nostri concessionari di zona e devono essere sempre corredate dalle seguenti indicazioni:</p> <ul style="list-style-type: none"> - Tipo, modello e numero di matricola dell'attrezzatura. Tali dati sono stampigliati nell'apposita targhetta di cui è dotata ogni attrezzatura. - Numero di codice della parte richiesta rilevabile dal catalogo ricambi. - Descrizione del particolare e quantità richiesta. - Numero della tavola. - Mezzo di trasporto. Nel caso questa voce non sia specificata, la Ditta Costruttrice, pur dedicando a questo servizio una particolare cura, non risponde di eventuali ritardi di spedizione dovuti a cause di forza maggiore. Le spese di trasporto si intendono sempre a carico del destinatario. La merce viaggia a rischio e pericolo del committente anche se venduta franco destino. <p>NOTA: Il termine (Dx) Destro o (Sx) Sinistro della macchina o di parti di essa, è inteso guardando la macchina dalla parte posteriore. Le eccezioni saranno indicate.</p>	<p><i>Orders must be transmitted through our area dealers and should always include the following indications:</i></p> <ul style="list-style-type: none"> - Type, model and serial number of the machine. <i>These data are punched on the data plate with which every implement is equipped.</i> - Code number of the required spare part. <i>This will be found in the spare parts catalogue.</i> - Description of the part and required quantity. - Table number. - Means of dispatch. <i>If this item is not indicated, the Manufacturer, while dedicating particular care to this service, shall not be held responsible for delays in delivery caused by cases of force majeure. Transport expenses shall always be at the consignee's charge. The goods travel at the purchaser's risk and peril even when sold ex destination.</i> <p>NOTE: <i>The symbols (Dx) right and (Sx) left, concerning the machine or single parts of it, are referred, as in the figure, to a rear view of them. Exceptions will be indicated.</i></p>	<p>Die Bestellungen müssen bei unseren Gebietshändlern aufgegeben werden. Bei der Bestellung sind stets die folgenden Angaben zu machen:</p> <ul style="list-style-type: none"> - Typ, Modell und Serien-Nummer des Geräts. Diese Daten stehen auf dem Typenschild, mit dem jedes Gerät versehen ist. - Artikel Nr. der erforderlichen Ersatzteile. Diese stehen im Ersatzteil-Katalog. - Beschreibung des Ersatzteils und die erforderliche Stückzahl. - Tafelnummer. - Versandmittel. Wenn dieser Punkt nicht spezifiziert wird, haftet die Herstellerfirma nicht für etwaigen Lieferverzug aufgrund höherer Gewalt, auch wenn er diesen Service besonders aufmerksam abwickelt. Die Frachtkosten gehen dagegen immer zu Lasten des Empfängers. Die Ware reist auf Gefahr und Risiko des Auftraggebers, auch wenn frei Haus Verkauft vereinbart worden ist. <p>N.B.: Die Merkzeichen (Dx) rechts und (Sx) links betreffen eine rückwärtige Aussicht der Maschine oder Teile von ihr (siehe Bild). Ausnahmen werden gezeigt.</p>	<p><i>Les ordres doivent être effectués auprès de nos concessionaires de zone en précisant les indications suivantes:</i></p> <ul style="list-style-type: none"> - Type, modèle et numéro de série de la machine. <i>Ces données sont gravées sur la plaque d'identification de chaque outil.</i> - Numéro de code de la pièce détachée indiqué sur le catalogue des pièces détachées. - Description de la pièce et quantité requise. - Numéro de plan. - Moyen d'expédition. <i>Si cette rubrique n'est pas indiquée, le Constructeur, bien que soucieux de ce service, ne répond pas des retards d'expédition pour des causes de force majeure. Les frais de transport sont toujours à la charge du destinataire. La marchandise voyage aux risques et périls de l'acheteur même si vendue franco de port.</i> <p>N.B.: <i>Les références (Dx) droit et (Sx) gauche de la machine ou des parties de la même, est entendue, comme de la figure, en regardant la machine de derriere dans le sens de marche.</i></p>	<p>Los pedidos han de efectuarse en nuestros concesionarios de zona y deben incluir siempre las siguientes indicaciones:</p> <ul style="list-style-type: none"> - Tipo, modelo y número de matrícula del equipo. Dichos datos están impresos en la relativa placa presente en el equipo. - Número de código de la parte requerida presente en el catálogo respuestas. - Descripción de la pieza y cantidad requerida. - Numero de ilustración. - Medio de transporte. En caso que este ítem no esté especificado, el Fabricante, aún prestando la debidas consideraciones para este aspecto, no responde por eventuales retardos de env'o debidos a causas de fuerza mayor. Los gastos de transporte se consideraran siempre a cargo del destinatario. La mercadería viaja bajo riesgo y peligro del comprador, incluso cuando se vende franco destino. <p>N.B.: La referencia (Dx) derecha o (Sx) izquierda de la máquina o de sus componentes, se entiende, como en la figura, mirando la máquina por la parte trasera. Se indicarán las excepciones.</p>

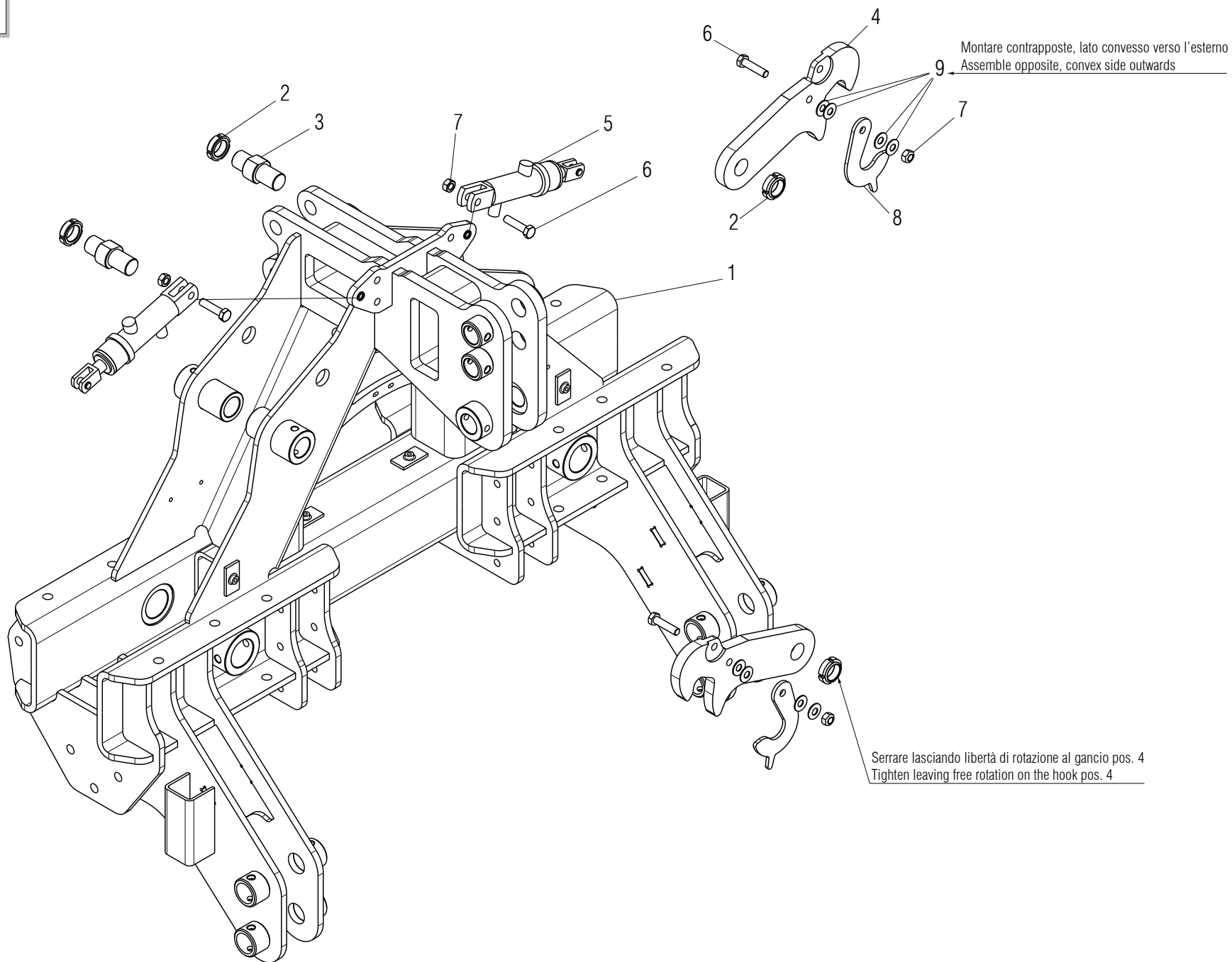
INDICE

<i>N° Tavola</i>	<i>Descrizione</i>	<i>Pagina</i>
TAV. 010	Terzo punto	4
TAV. 020	Ali seminatrice.....	6
TAV. 030	Impianto idraulico.....	8
TAV. 040	Cilindro regolazione altezza di lavoro	10
TAV. 050	Rango anteriore centrale	12
TAV. 060	Rango posteriore centrale.....	14
TAV. 070	Collegamento ranghi.....	16
TAV. 080	Ranghi anteriore laterali.....	18
TAV. 090	Ranghi posteriori laterali	20
TAV. 100	Elemento operatore DDS.....	22
TAV. 110	Ruotino premiseme.....	24
TAV. 120	Distributore.....	26
TAV. 130	Erpice copriseme	28
TAV. 140	Puntelli di supporto	30
TAV. 150	Segnafile (opt.).....	32
TAV. 160	Impianto idraulico segnafile (opt.).....	34
TAV. 170	Tramline (opt.).....	36
TAV. 180	Tabelle stradali	38

INDEX

<i>N° Table</i>	<i>Description</i>	<i>Page</i>
TAV. 010	3rd point hitch	4
TAV. 020	Seed drill wings.....	6
TAV. 030	Hydraulic plant	8
TAV. 040	Depth adjusting cylinder.....	10
TAV. 050	Front central rank.....	12
TAV. 060	Rear central rank	14
TAV. 070	Ranks connection	16
TAV. 080	Front side ranks	18
TAV. 090	Rear side ranks.....	20
TAV. 100	DDS Operator element	22
TAV. 110	Seed press wheel	24
TAV. 120	Distributor.....	26
TAV. 130	Seed covering harrow	28
TAV. 140	Supports.....	30
TAV. 150	Row marker (opt.)	32
TAV. 160	Row marker hydraulic plant (opt.)	34
TAV. 170	Tramline (opt.).....	36
TAV. 180	Road transport kit.....	38

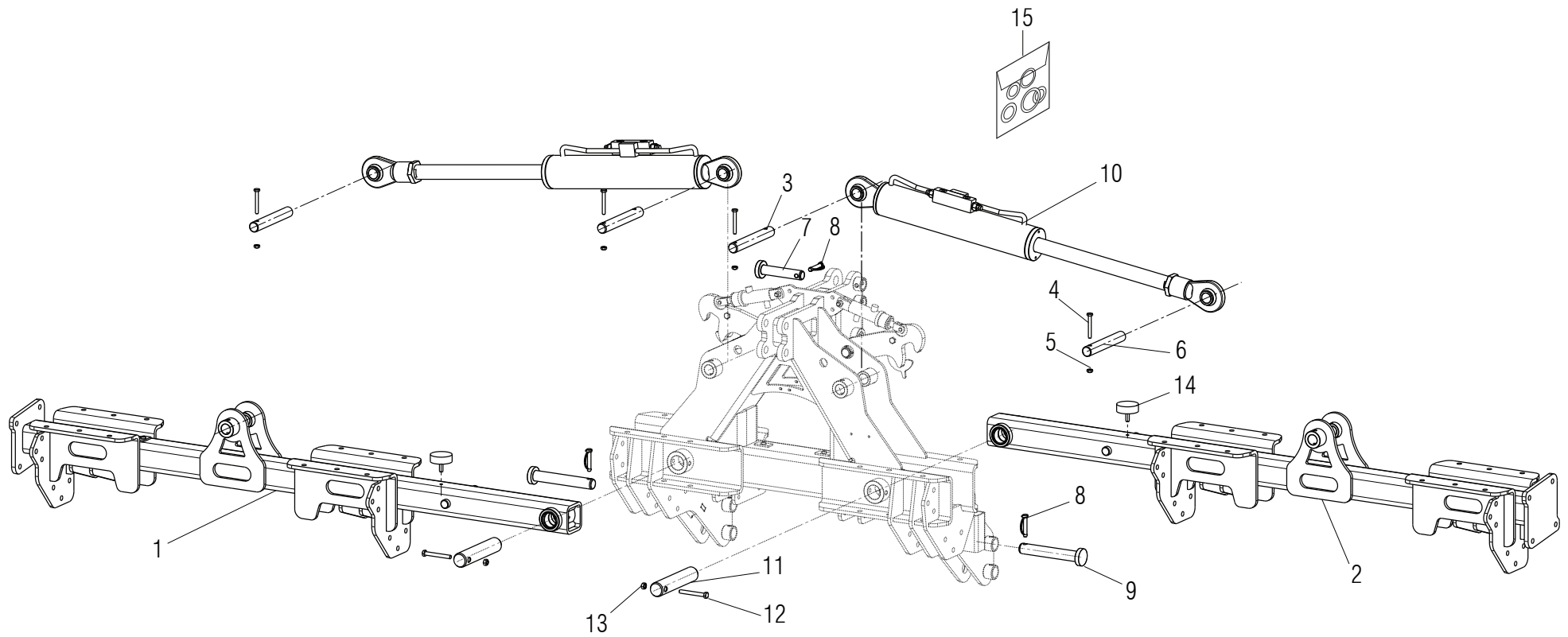
TAV. 010



TERZO PUNTO / 3RD POINT HITCH

TAV. 010

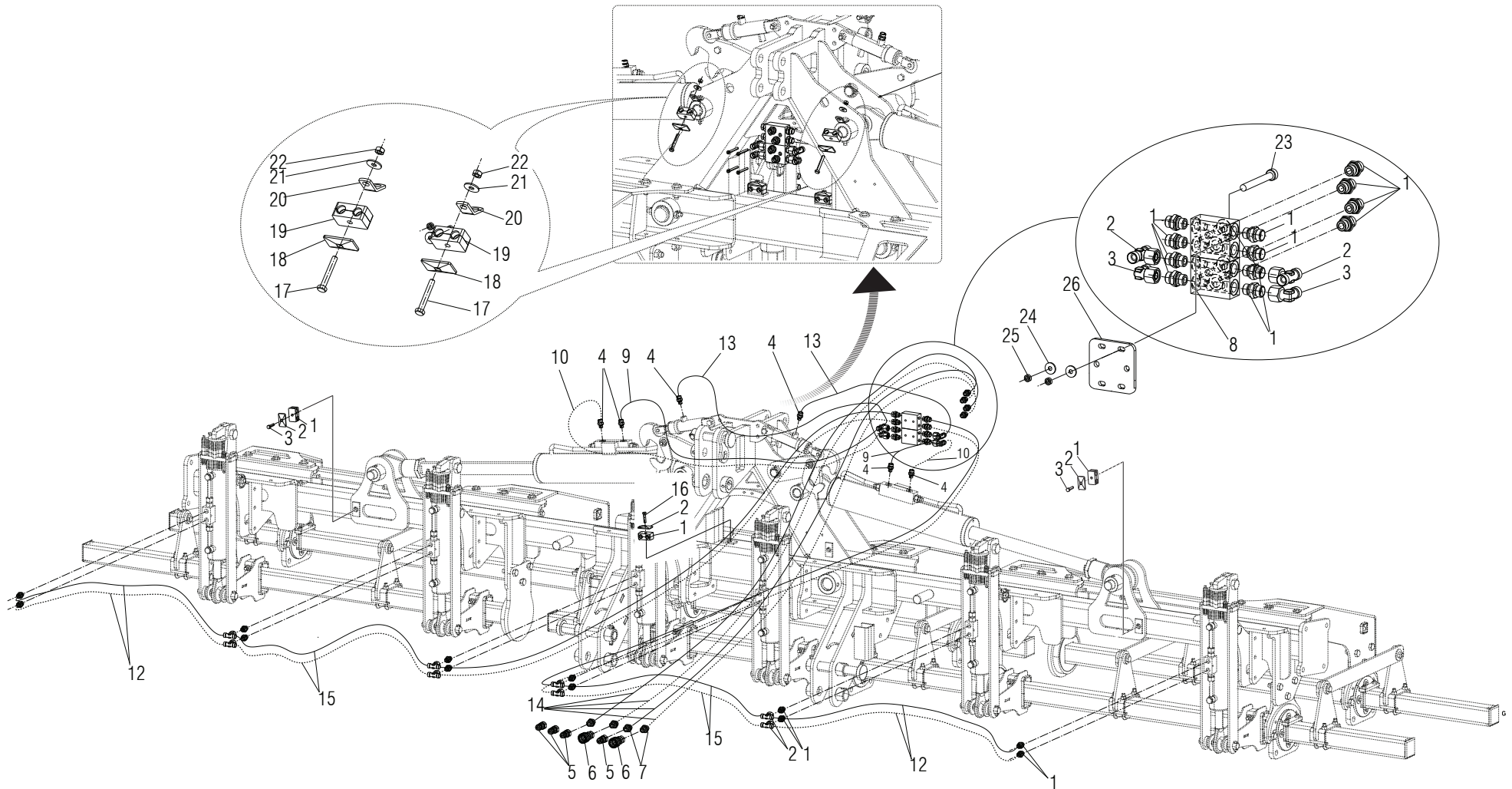
Pos.	Cod.	Descrizione	Description	Benennung	Description	Description
1	M23700376	COMPOSTO TERZO PUNTO	THIRD POINT			
2	F02010111	GHIERA AU.GUP M30X1,5 T.4H ZN	SELF LOCKING NUT M30X1,5	COLLIER AUTOBL. M30X1,5	SELBSTSP. NUTMUTTER M30X1,5	VIROLA AUTOBL. M30X1,5
3	M06400584	PERNO AGGANCI	PIN	AXE	BOLZEN	PERNO
4	M27400855	AGGANCI ALI FALCO	UPPER LOCKER HOOK	CROCHET ARRET SUPERIEUR	OBEHAKENHALTER	GANCHO DEL CIERRE SUPERIOR
5	M27400790	MARTINETTO AGGANCI MOLLA RINF.	JACK COMPLETE	VERIN	HYDR. WINDE	GATO HYDRAULICO
6	F01010055	VITE M12X1,25X 50 5738 8.8 ZN	BOLT M12X1,25X50 U5738 8.8 ZN	VIS M12X1,25X50 U5738 8.8 ZN	SCHRA.M12X1,25X50 U5738 8.8 ZN	TORN. M12X1,25X50 U5738 8.8 ZN
7	F01220047	DADO M12X1,25 D980 8 ZN	NUT M12X1,25 D980 8 ZN	ECROU M12X1,25 D980 8 ZN	MUTTER M12X1,25 D980 8 ZN	TUERCA M12X1,25 D980 8 ZN
8	M12400717	AGGANCI DI SICUREZZA	HOOK	CROCHET	KOPPELUNG	GANCHO
9	F01470022	ROS.T 12,2X 28X1,50 ZN	WASHER 12	ROSETTE	SCHEIBE 12	ARANDELLA 12



ALI SEMINATRICE / SEED DRILL WINGS

TAV. 020

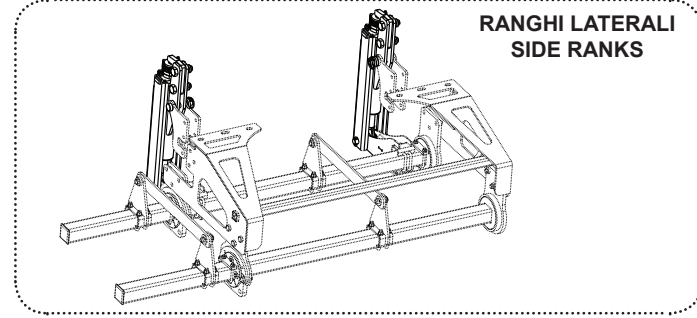
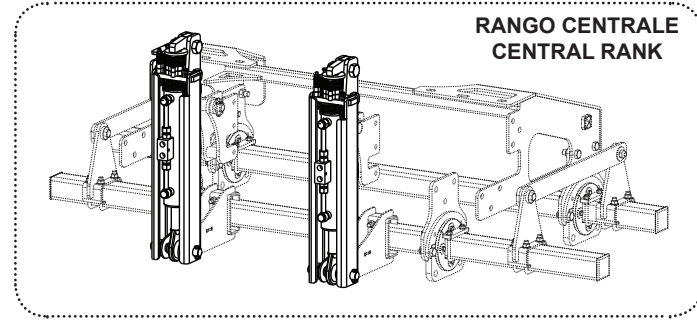
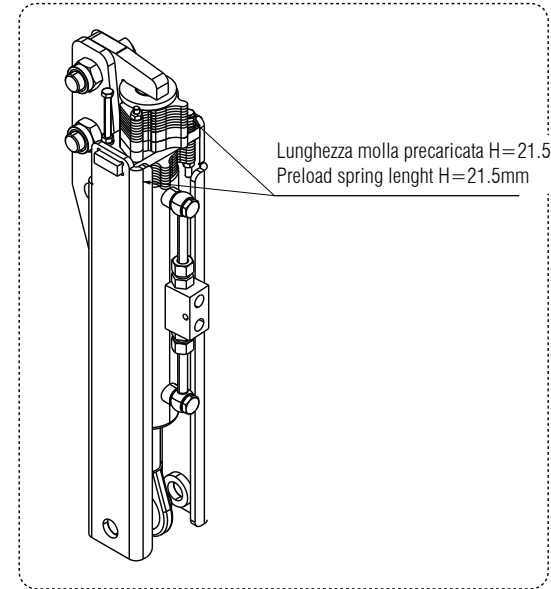
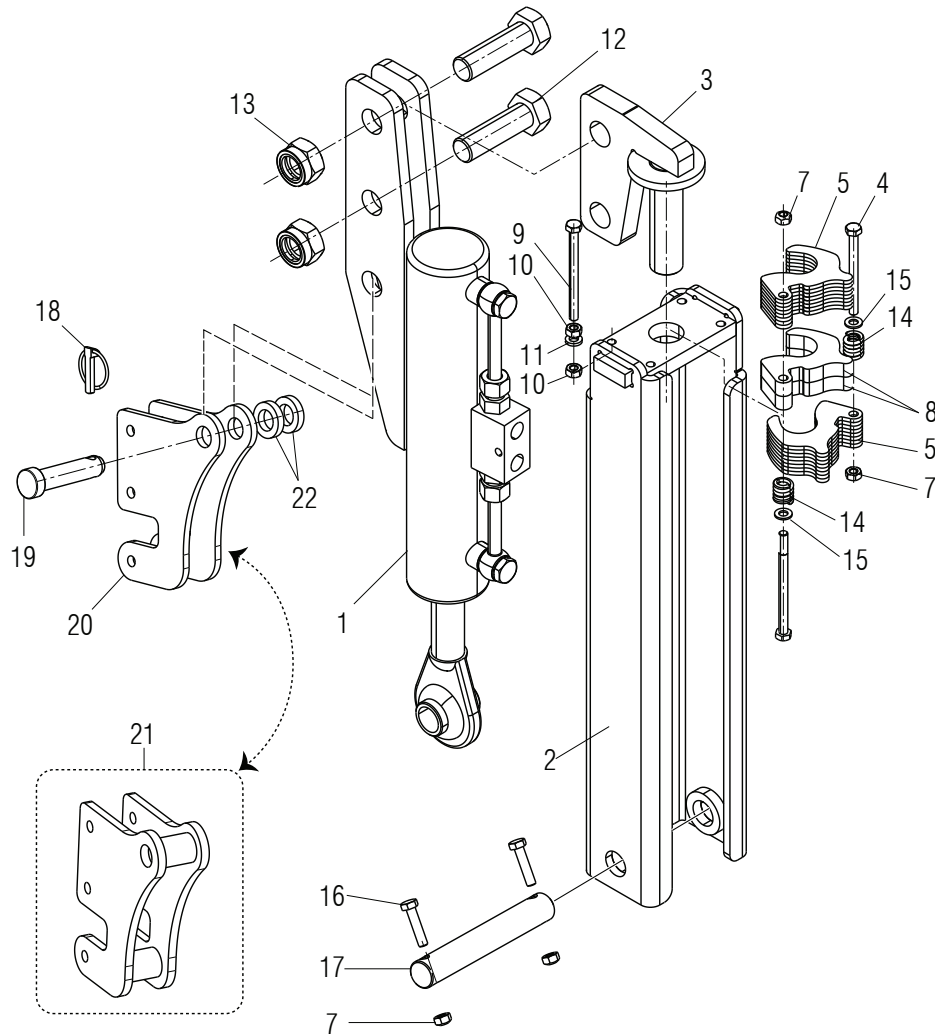
Pos.	Cod.	Descrizione	Description	Benennung	Description	Description
1	M23700381	ALA SX BARRA SEMINA 600	LEFT UPPER STRUCTURE 600			
2	M23700380	ALA DX BARRA SEMINA 600	RIGHT UPPER STRUCTURE 600			
3	R17210690	SPINA D35 L252 39NICRMO3 NIPRE	COUPLING BOLT MOBILE ARM	BOULON D35 L252 39NICRMO3 NIPR	BOLZEN D35 L252 39NICRMO3 NIPR	PERNO D35 L252 39NICRMO3 NIPRE
4	F01010033	VITE M10X1,25X80 U5738 8.8ZN	SCR. M10X1,25X80 U5738 8.8ZN	VIS M 10X1,25X80	SCHRAUBE M 10X1,25X80	TORNILLO M 10X1,25X80
5	F01220034	DADO M10X1,25 D980 8ZN	NUT M10X1,25 D980 8ZN	ECRO.M10X1,25 D980 8 ZB	MUTT.M10X1,25 D980 8 ZB	TUER.M10X1,25 D980 8 ZB
6	R17210300	SPINA D35XL240 1F.D10,5 A 22,5	BOLT COUPLING ARM D35 L240	BOULON FIXATION BRAS D35 L240	BOLZEN KUPPLUNG ARM D35 L240	PERNO FIJACION ARM D35 L240
7	F20100139	PERNO D32 L135 C43 ZN	PIN D32 L135 C40 ZN			
8	F02200584	SPINA SICUR. D. 12X70 ZN	PIN D12 L70 ZN	FICHE D12 L70 ZN	STIFT D12 L70 ZN	CLAVIJA D12 L70 ZN
9	F20100142	PERNO D36 L208 C43 ZN	PIN D36 L208 C43 ZN	GOUJON D36 L208 C43 ZN	BOLZEN D36 L208 C43 ZN	PERNO D36 L208 C43 ZN
10	M65400503	MART.IDR. A=100 C=492 L=1400	HYDR.JACK A=100 C=492 L=1400	CYLINDRE A=100 C=492 L=1400	ZYLINDER A=100 C=492 L=1400	CILINDRO A=100 C=492 L=1400
11	M76400125	SPINA D=50 L=250	PIN D=50 L=250	GOUJON D=50 L=250	BOLZEN D=50 L=250	ESPINA D=50 L=250
12	F01010064	VITE M12X1,25X100 U5738 8.8ZN	SCR. M12X1,25X100 U5738 8.8ZN	VIS M 12X1,25X100	SCHRAUBE M 12X1,25X100	TORNILLO M 12X1,25X100
13	F01220048	DADO M12X1,75 D980 8ZN	NUT M12X1,75 D980 8ZN	ECROU M12X1,75 D980 8 ZN	SCHEIBE M12X1,75 D980 8 ZN	TUERCA M12X1,75 D980 8 ZN
14	F05150459	PARACOLPI CIL.75X25 M12 SH70	CYLINDER GUARD 75X25 M12 SH71	TAMPON CIL. 75X25 M12	PUFFER CIL. 75X25 M12	PARACHOQ. CIL. 75X25 M12
15	F03151424	KIT GUARNIZIONI	GASKET SET			



IMPIANTO IDRAULICO / HYDRAULIC PLANT

TAV. 030

Pos.	Cod.	Descrizione	Description	Benennung	Description	Description
1	F03080001	NIPPLO M3/8 SEAL ML12 ZN	NIPPLE M3/8 SEAL ML12 ZN			
2	F03080009	RACC.T ML12 FL12 ML12 ZN	T-UNION ML12 FL12 ML12 ZN			
3	F03080062	RACC.L FL12 ML12 ZN	L-UNION FL12 ML12 ZN			
4	F03080064	NIPPLO M1/4 SEAL ML12 ZN	NIPPLE M1/4 SEAL ML12 ZN			
5	F03150935	INNESTO RAP.MASCH.1/2 A VALV.	QUICK CONNECT MALE CONE 1/2	CONNEXION RAPIDE MALE CONE 1/2	SCHNELLKUPP.GEWINDE KONISC 1/2	ACOPLAMIENT.RAP.MACHO CONO 1/2
6	F03150948	INNESTO RAP.FEMM.1/2 A VALVOLA	QUICK-CONNECT 1/2 VALVE FEM.	ACCOUPL. RAPIDE FEM.1/2 VANNE	SCHNELLKUPPLUNG NUT 1/2	ACOPLA. RÁP.HEMB.1/2 VÁLVULA
7	F03080017	NIPPLO M1/2 SEAL ML12 ZN	NIPPLE M1/2 SEAL ML12 ZN			
8	F03080209	MASSELLO 3+3 VIE FEMM. 3/8"	BLOCK VALVE 3+3 F. 3/8"			
9	F03070620	TG 3/8 R17 CFL12 CFL12 780	PIPE 3/8 R17 CFL12 CFL12 780			
10	F03070614	TG 3/8 R17 CFL12 CFL12 800	PIPE 3/8 R17 CFL12 CFL12 800			
11	F03070609	TG 3/8 R17 FL12 CFL12 1100	PIPE 3/8 R17 FL12 CFL12 1100			
12	F03070607	TG 3/8 R17 FL12 CFL12 1500	PIPE 3/8 R17 FL12 CFL12 1500			
13	F03070603	TG 3/8 R17 FL12 CFL12 2600	PIPE 3/8 R17 FL12 CFL12 2600			
14	F03070602	TG 3/8 R17 FL12 FL12 3300	PIPE 3/8 R17 FL12 FL12 3300			
15	F03070600	TG 3/8 R17 FL12 FL12 1500	TR R17 3/8" FD12L FD12L 1500			
16	F01020449	VITE M8X1,25X35 U5739 8.8ZN	SCR. M8X1,25X35 U5739 8.8ZN	VIS M 8X35	SCHRAUBE M 8X35	TORNILLO M 8X35
17	F01020075	VITE M8X1,25X55 U5737 8.8ZN	SCR. M8X1,25X55 U5737 8.8ZN	VIS M8X1,25X 55 U5737 8.8 ZN	SCHRAUBE M8X1,25X 55 U5737	TORNILLO M8X1,25X 55 U5737
18	F03150993	PIATTO X COLLARE SUPERIORE ZN	PLATE	PLAT	PLATTE	PLATO
19	F03150992	COPPIA COLLARI X TUBO D.16	DOUBLE SUPPORT	SUPPORT DOUBLE	DOPPELHALTER	SOPORTE DOBLE
20	M62100559	PIATTO ATTACCO CATENELLA ZN	PLATE	PLAQUETTE	PLATTE	PLAQUITA
21	F01420048	ROS.M8 8,4X 24X 2 U6593 ZN	WASHER M8 8,4X 24X2 U6593 ZN	RONDELLE M8 8,4X24X 2 U6593 ZN	SCHEIBEN M8 8,4X24X 2 U6593 ZN	ARANDELA M8 8,4X 24X2 U6593 ZN
22	F01220022	DADO M8X1,25 D980 8ZN	NUT M8X1,25 D980 8ZN	ECROU M8X 1,25 D980 8 ZN	MUTTER M8X 1,25 D980 8 ZN	TUERCA M8X 1,25 D980 8 ZN
23	F01040069	VITE M6X1X55 U5931 8.8ZN	SCR. M6X1X55 U5931 8.8ZN	VIS M 6X1X55	SCHRAUBE M 6X1X55	TORNILLO M 6X1X55
24	F01420036	ROS.M6 6,4X 18X 2 U6593 ZN	WASHER M6 6,4X 18X2 U6593 ZN	RONDELLE M6 6,4X18X2 2 U6593ZN	SCHEIBEN M6 6,4X18X 2 U6593 ZN	ARANDELA M6 6,4X18X2 U6593 ZN
25	F01220011	DADO M6X1 D980 8ZN	NUT M6X1 D980 8ZN	ECROU M6X1 D980 8 ZN	MUTTER M6X1 D980 8 ZN	TUERCA M6X1 D980 8 ZN
26	M78400967	PIASTRA SUPPORTO VALVOLA	VALVE SUPPORT PLATE			

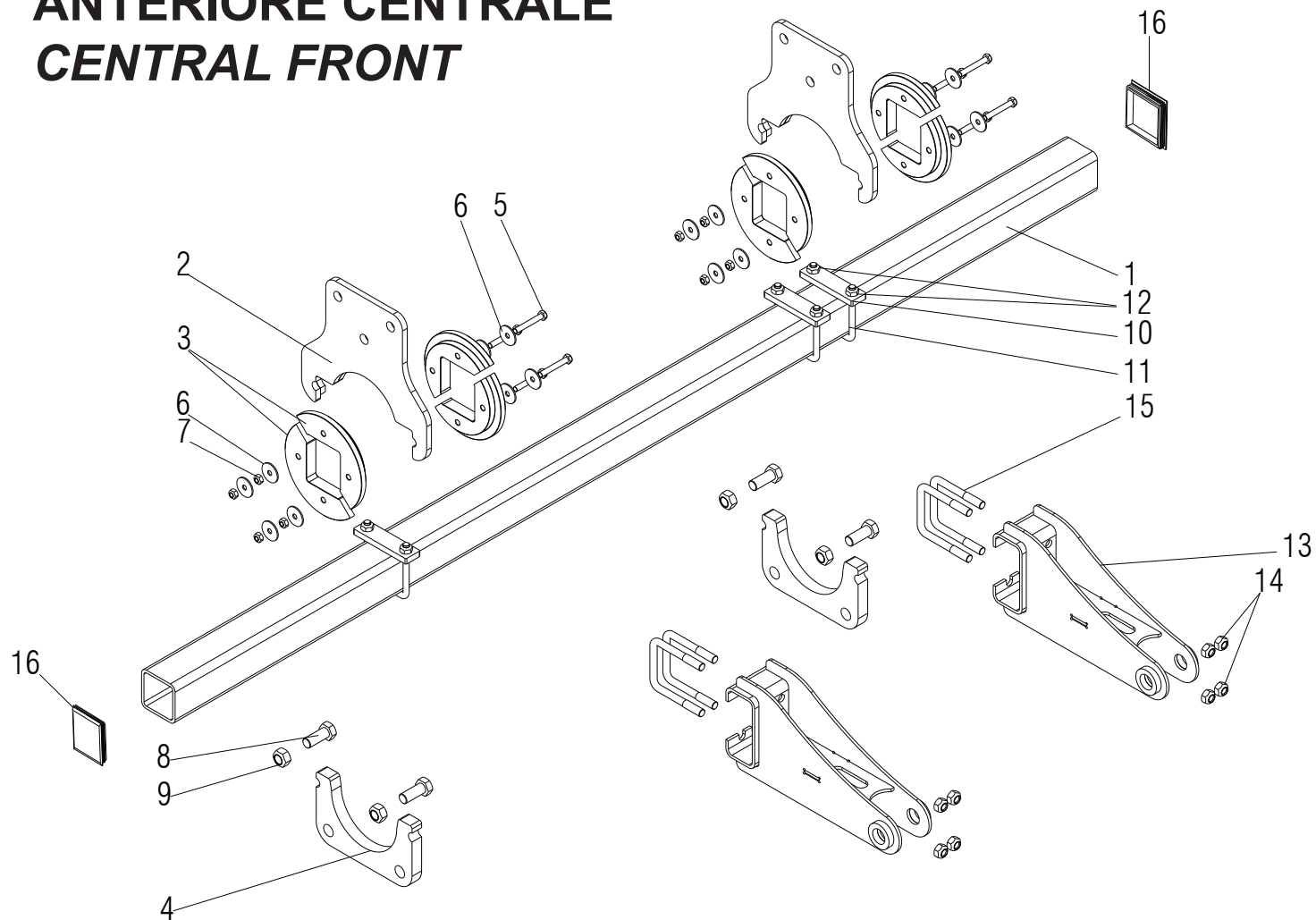


CILINDRO REGOLAZIONE PROFONDITA' DI LAVORO / WORKING DEPTH ADJUSTING CYLINDER

TAV. 040

Pos.	Cod.	Descrizione	Description	Benennung	Description	Descripcion
1	R17811482	CILINDRO L550 C250 D75 S30 A60	CYLINDER L550 C250 D75 S30 A60	CYLINDRE L550 C250 D75 S30 A60	ZYLINDER L550 C250 D75 S30 A60	CILINDRO L550 C250 D75 S30 A60
2	M78400591	STAFFA LIMITATRICE DI CORSA	STAFFA LIMITATRICE DI CORSA			
3	M78400595	LIMITATORE DI CORSA	STROKE LIMITATOR			
4	F01020088	VITE M8X1,25X90 U5737 8.8ZN	SCR. M8X1,25X90 U5737 8.8ZN	VIS M8X1,25X90 U5737 8.8 ZN	SCHR.M8X1,25X90 U5737 8.8 ZN	TORN. M8X1,25X90 U5737 8.8 ZN
5	M78400588	SPES.LIMITAT.CORSA D=30 S=4	STROKE LIMITATOR SPACER D.30			
6	F01020092	VITE M8X1,25X110 U5737 8.8ZN	SCR. M8X1,25X110 U5737 8.8ZN	VIS 8 X110 5737 8.G ZN	SCHRAUBE 8 X110 5737 8.G ZN	TORNILLO 8 X110 5737 8.G ZN
7	F01220022	DADO M8X1,25 D980 8ZN	NUT M8X1,25 D980 8ZN	ECROU M8X 1,25 D980 8 ZN	MUTTER M8X 1,25 D980 8 ZN	TUERCA M8X 1,25 D980 8 ZN
8	M78400587	SPES.LIMITAT.CORSA D=30 S=15	STROKE LIMITATOR SPACER			
9	F01020456	VITE M8X1,25X100 U5739 8.8ZN	SCR. M8X1,25X100 U5739 8.8ZN	VIS M 8	SCHRAUBE M 8	TORNILLO M 8
10	F01200244	DADO M8X1,25 U5588 6.8ZN	NUT M8X1,25 U5588 6.8ZN	ECROU M8 X1,25 U5588 6.8 ZN	MUTTER M8 X1,25 U5588 6.8 ZN	TUERCA M8 X1,25 U5588 6.8 ZN
11	F01480099	ROS.G 8,4X14,4X2,7 FLZNNC-240H	GROWER WASHER D.8	RONDELLE GROWER D.8	SCHEIBE GROWER D.8	ARANDELA GROWER D.8
12	F01020343	VITE M24X3X80 U5737 10.9ZD	SCR. M24X3X80 U5737 10.9ZD	VIS M24X3X80 U5737 10.9 ZN	SCHRA. M24X3X80 U5737 10.9 ZN	TORN. M24X3X80 U5737 10.9 ZN
13	F01230273	DADO M24X3 D985 8ZN	NUT M24X3 D985 8ZN	ECROU M24X 3 D985 8 ZN	MUTTER M24X 3 D985 8 ZN	TUERCA M24X 3 D985 8 ZN
14	M78400434	MOLLA L=25 D=18,5 D=4	SPRING L=25			
15	F01410051	ROS.M8 8,4X 17X1,6 U6592 ZN	WASHER M8 8,4X17X1,6 U6592 ZN	RONDELLE M8 8,4X17X1,6 U6592ZN	SCHEIBE M8 8,4X17X1,6 U6592 ZN	ARANDELA M8 8,4X17X1,6 U6592ZN
16	F01020449	VITE M8X1,25X35 U5739 8.8ZN	SCR. M8X1,25X35 U5739 8.8ZN	VIS M 8X35	SCHRAUBE M 8X35	TORNILLO M 8X35
17	M76500213	PERNO D=25 L=167	PIN			
18	F02200529	SPINA SCATTO D.11 ZN	SNAP PIN D.11	FICHE A DETENTE D.11	EINRASTSTIFT D.11	CLAVIJA DE MUELLE D.11
19	F20100063	PERNO D25 L91 C40 ZN	PIN D25 L91 C43 ZN	BOULON D25 L91 C43 ZN	BOLZEN D25 L91 C43 ZN	PERNO D25 L91 C43 ZN
20	M23700366	PIASTRA SUPPORTO MARTINETTO	PLATE CYLINDER SUPPORT			
21	M23700369	SUPPORTO MARTINETTO	CYLINDER SUPPORT			
22	G16315080	BOCCOLA D=43 D=25,5 L=10	BUSCH D=43 D=25,5 L.10			

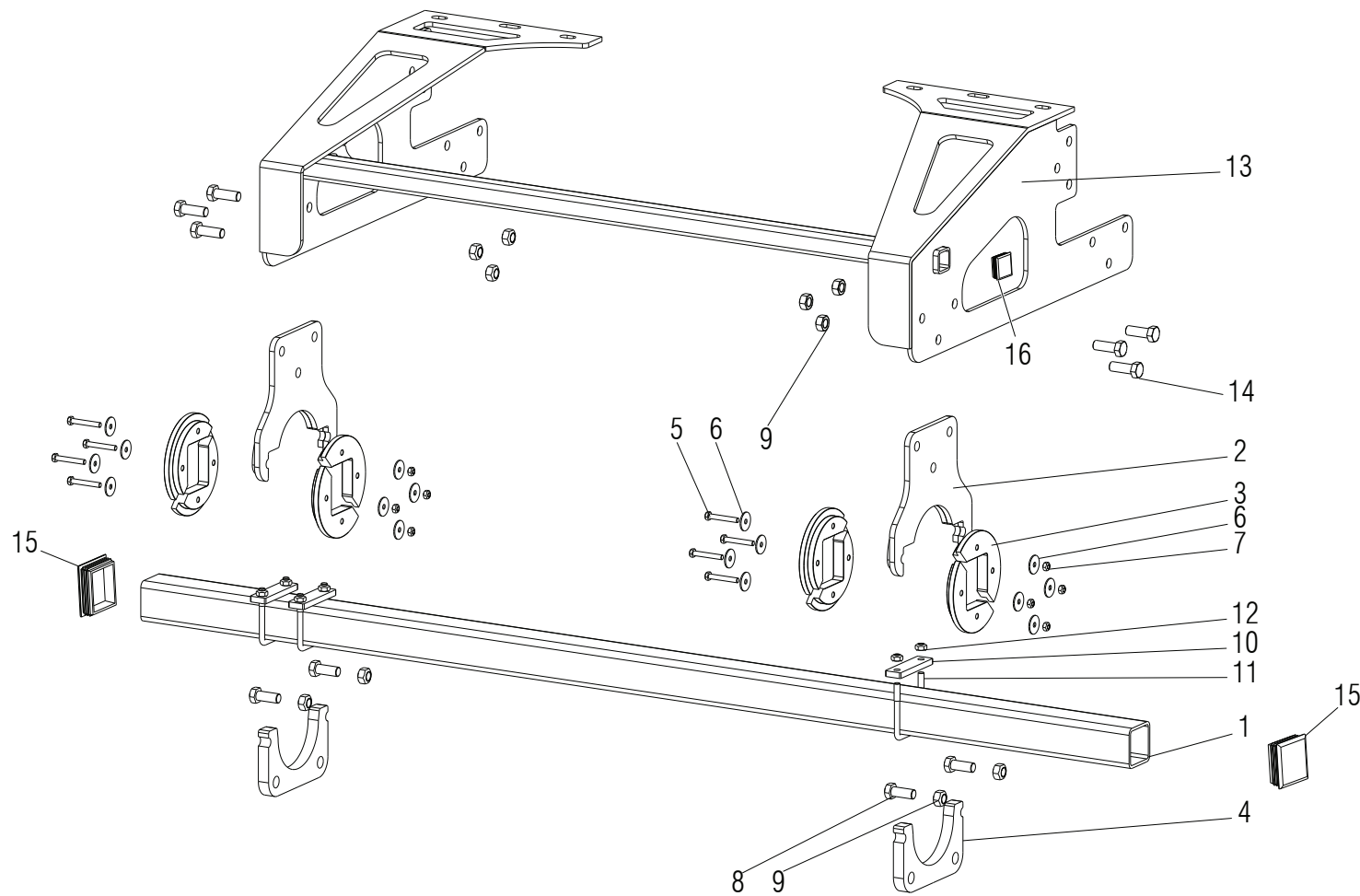
ANTERIORE CENTRALE CENTRAL FRONT



RANGO CENTRALE ANTERIORE / CENTRAL FRONT RANK

TAV. 050

Pos.	Cod.	Descrizione	Description	Benennung	Description	Description
1	M78419353	TUBO QUADRO B=70 S=5 L=1925	SQUARE TUBE B=70 S5			
2	M78400349	SUPPORTO BARRA DI SEMINA SALD.	WELDED SEENDING BAR SUPPORT			
3	G17240661	BOCCOLA ROTAZIONE POM	ROTATION BUSHING POM			
4	G17240671	SUPPORTO INF.BOCCOLA ROTAZIONE	LOWER SUPP.ROTARY BUSHING			
5	F01020075	VITE M8X1,25X55 U5737 8.8ZN	SCR. M8X1,25X55 U5737 8.8ZN	VIS M8X1,25X 55 U5737 8.8 ZN	SCHRAUBE M8X1,25X 55 U5737	TORNILLO M8X1,25X 55 U5737
6	F01420049	ROS.M8 8,4X 32X 2 U6593 ZN	WASHER M8 8,4X32X2 U6593 ZN	RONDELLA M8 8,4X32X2 U6593 ZN	SCHEIBE M8 8,4X32X2 U6593 ZN	ARANDELA M8 8,4X32X2 U6593 ZN
7	F01220022	DADO M8X1,25 D980 8ZN	NUT M8X1,25 D980 8ZN	ECROU M8X 1,25 D980 8 ZN	MUTTER M8X 1,25 D980 8 ZN	TUERCA M8X 1,25 D980 8 ZN
8	F01010339	VITE M16X1,5X40 U5740 8.8ZN	SCR. M16X1,5X40 U5740 8.8ZN	VIS M 16X1,5X40	SCHRAUBE M 16X1,5X40	TORNILLO M 16X1,5X40
9	F01220070	DADO M16X1,5 D980 8ZN	NUT M16X1,5 D980 8ZN	ECRO.M16X 1,5 D980 8 ZN	MUTTER M16X 1,5 D980 8 ZN	TUER.M16X 1,5 D980 8 ZN
10	G17241120	SCONTRO 110X 30-10 2F11 81	PLATE110X30-10 2HOLES 11 81			
11	F20110725	CAV.Q.B=70 M=10X1,5 L=92	U BOLT Q.B=70 M=10X1,5 L=92	CAVALIER M10SUPPORT TRACEUR	BsGELBOLZEN M10 SPURREISSERHAL	PERNO EN U M10 SOPORTE MARCA.
12	F01220033	DADO M10X1,5 D980 8ZN	NUT M10X1,5 D980 8ZN	ECROU M10X 1,5 D980 8 ZN	MUTTER M10X 1,5 D980 8 ZN	TUERCA M10X 1,5 D980 8 ZN
13	M23700370	BRACCIO PER Q.70 L=300	ARM FOR Q.70			
14	F01220048	DADO M12X1,75 D980 8ZN	NUT M12X1,75 D980 8ZN	ECROU M12X1,75 D980 8 ZN	SCHEIBE M12X1,75 D980 8 ZN	TUERCA M12X1,75 D980 8 ZN
15	F20110745	CAV.Q.B=70 M=12X1,75L=96	U BOLT Q.B=70 M=12X1,75 L=96	CAVALIER M12 POUR TUBE 70X70	BsGELBOLZEN M12 F&R ROHR 70X70	PERNO EN U M12 X TUBO 70X70
16	F05100156	TAPPO PER TUBO 70X70	PLASTIC CAP X PIPE 70X70 TK.5	BOUCHON 70X 70	ROHRKOPFSTOPFEN 70X 70	TAPON 70X 70

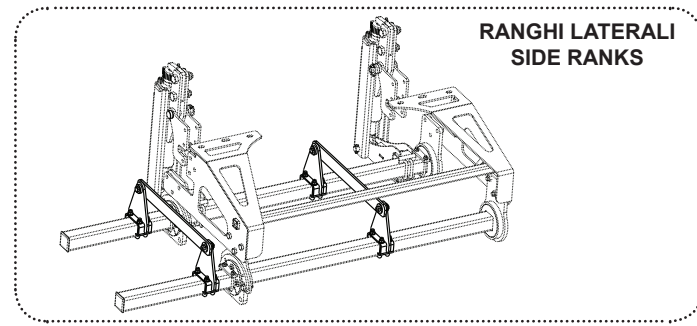
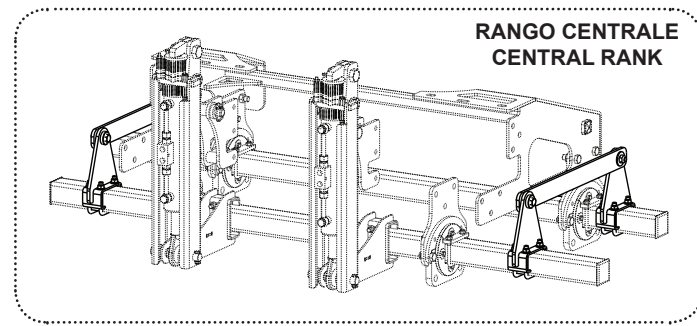
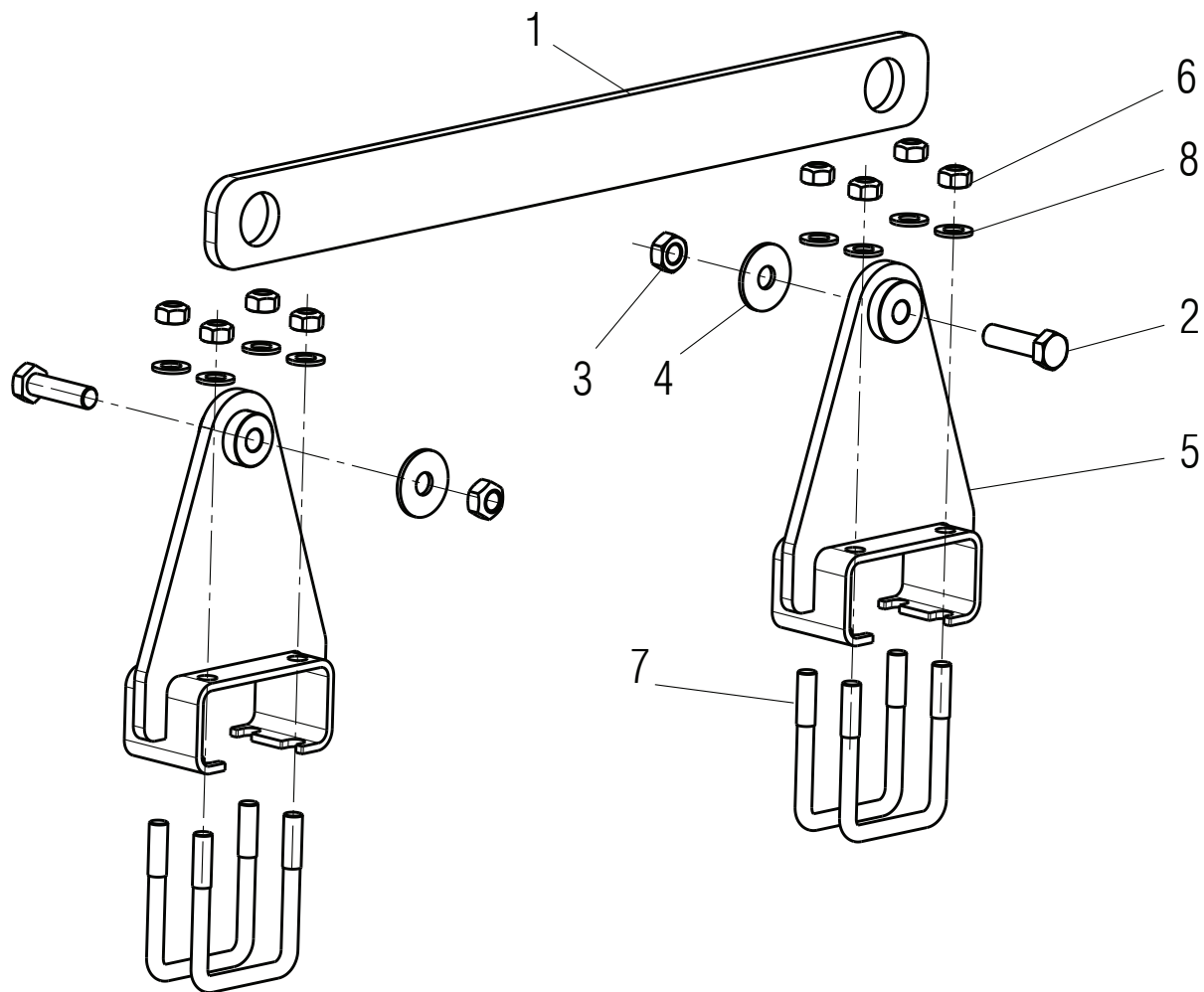


POSTERIORE CENTRALE
CENTRAL REAR

RANGO CENTRALE POSTERIORE / CENTRAL REAR RANK

TAV. 060

Pos.	Cod.	Descrizione	Description	Benennung	Description	Description
1	M78419353	TUBO QUADRO B=70 S=5 L=1925	SQUARE TUBE B=70 S5			
2	M78400349	SUPPORTO BARRA DI SEMINA SALD.	WELDED SEENDING BAR SUPPORT			
3	G17240661	BOCCOLA ROTAZIONE POM	ROTATION BUSHING POM			
4	G17240671	SUPPORTO INF.BOCCOLA ROTAZIONE	LOWER SUPP.ROTARY BUSHING			
5	F01020075	VITE M8X1,25X55 U5737 8.8ZN	SCR. M8X1,25X55 U5737 8.8ZN	VIS M8X1,25X 55 U5737 8.8 ZN	SCHRAUBE M8X1,25X 55 U5737	TORNILLO M8X1,25X 55 U5737
6	F01420049	ROS.M8 8,4X 32X 2 U6593 ZN	WASHER M8 8,4X32X2 U6593 ZN	RONDELLA M8 8,4X32X2 U6593 ZN	SCHEIBE M8 8,4X32X2 U6593 ZN	ARANDELA M8 8,4X32X2 U6593 ZN
7	F01220022	DADO M8X1,25 D980 8ZN	NUT M8X1,25 D980 8ZN	ECROU M8X 1,25 D980 8 ZN	MUTTER M8X 1,25 D980 8 ZN	TUERCA M8X 1,25 D980 8 ZN
8	F01010339	VITE M16X1,5X40 U5740 8.8ZN	SCR. M16X1,5X40 U5740 8.8ZN	VIS M 16X1,5X40	SCHRAUBE M 16X1,5X40	TORNILLO M 16X1,5X40
9	F01220070	DADO M16X1,5 D980 8ZN	NUT M16X1,5 D980 8ZN	ECRO.M16X 1,5 D980 8 ZN	MUTTER M16X 1,5 D980 8 ZN	TUER.M16X 1,5 D980 8 ZN
10	G17241120	SCONTRO 110X 30-10 2F11 81	PLATE110X30-10 2HOLES 11 81			
11	F20110725	CAV.Q.B=70 M=10X1,5 L=92	U BOLT Q.B=70 M=10X1,5 L=92	CAVALIER M10SUPPORT TRACEUR	BsGELBOLZEN M10 SPURREISSERHAL	PERNO EN U M10 SOPORTE MARCA.
12	F01220033	DADO M10X1,5 D980 8ZN	NUT M10X1,5 D980 8ZN	ECROU M10X 1,5 D980 8 ZN	MUTTER M10X 1,5 D980 8 ZN	TUERCA M10X 1,5 D980 8 ZN
13	M23713374	SUPPORTO POSTERIORE				
14	F01010341	VITE M16X1,5X45 U5740 8.8ZN	SCR. M16X1,5X45 U5740 8.8ZN	VIS M16X1,5 X45 U5740 8.8 ZN	SCHR.M16X1,5 X45 U5740 8.8 ZN	TORN.M16X1,5 X45 U5740 8.8 ZN
15	F05100156	TAPPO PER TUBO 70X70	PLASTIC CAP X PIPE 70X70 TK.5	BOUCHON 70X 70	ROHRKOPFSTOPFEN 70X 70	TAPON 70X 70
16	F05100025	TAPPO AD ALETTE 35X35 PLT NERO	PLUG	BOUCHON FERMETURE	VERSCHLUSSPFROPFEN	TAPONCLAUSURA

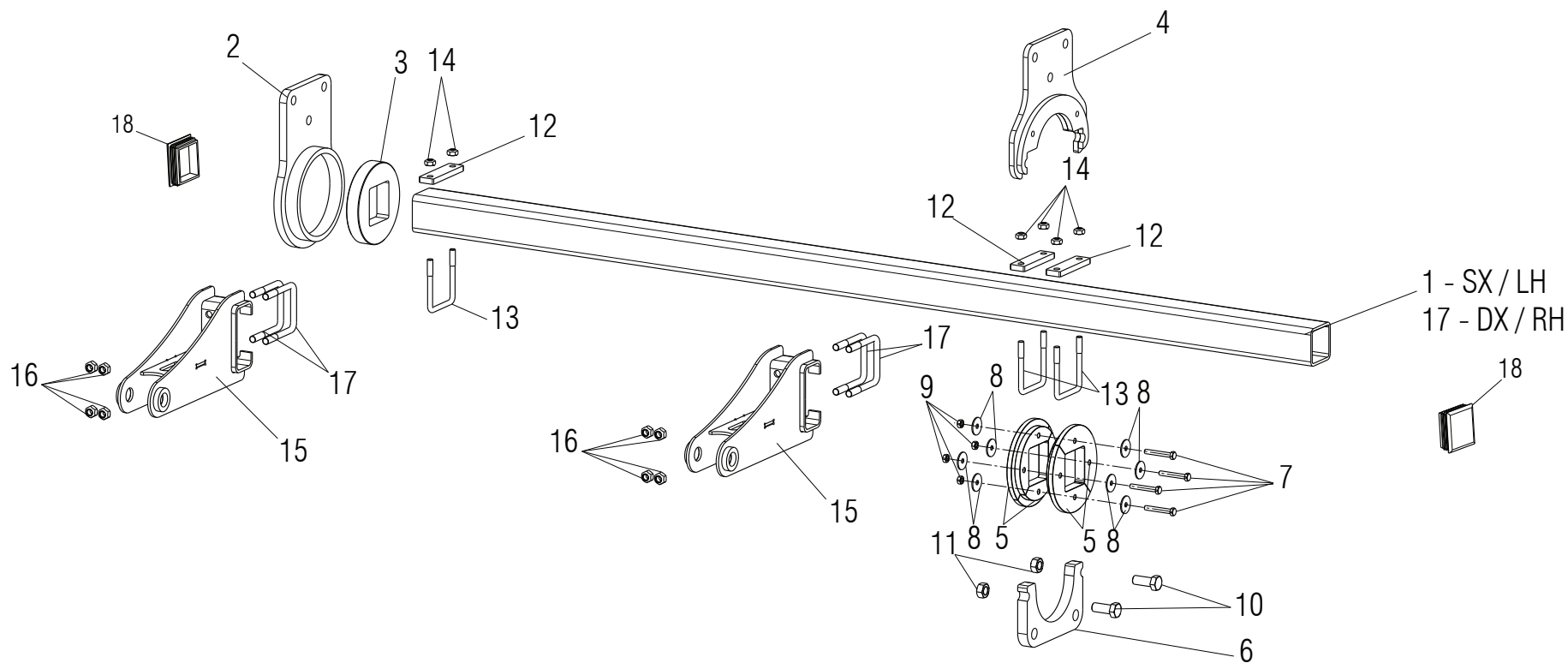


COLLEGAMENTO RANGHI / RANKS CONNECTION

TAV. 070

Pos.	Cod.	Descrizione	Description	Benennung	Description	Description
1	G17240731	SCONTRO 655X 60-10 2F35 575	PLATE 655X60-10 2HOLES 35 575			
2	F01010082	VITE M14X1,5X50 U5738 8.8ZN	SCR. M14X1,5X50 U5738 8.8ZN	VIS M 14X1,5X50	SCHRAUBE M 14X1,5X50	TORNILLO M 14X1,5X50
3	F01220059	DADO M14X1,5 D980 8ZN	NUT M14X1,5 D980 8ZN	ECROU M14X 1,5 D980 8 ZB	MUTTER M14X 1,5 D980 8 ZB	TUERCA M14X 1,5 D980 8 ZB
4	F01420085	ROS.M14 15X 44X 3 U6593 ZN	WASHER M14 15X 44X 3 U6593			
5	G17241170	SUPP.RINVIO PARALLELOGRAMMA	PARALL.TRANSM. SUPPORT			
6	F01220048	DADO M12X1,75 D980 8ZN	NUT M12X1,75 D980 8ZN	ECROU M12X1,75 D980 8 ZN	SCHEIBE M12X1,75 D980 8 ZN	TUERCA M12X1,75 D980 8 ZN
7	F20110745	CAV.Q.B=70 M=12X1,75L=96	U BOLT Q.B=70 M=12X1,75 L=96	CAVALIER M12 POUR TUBE 70X70	BsGELBOLZEN M12 Fsr ROHR 70X70	PERNO EN U M12 X TUBO 70X70
8	F01410076	ROS.M12 13X 24X2,5 U6592 ZN	WASHER 12 13X 24X2,5 U6592 ZN	RONDEL. M12 13X24X2,5 U6592 ZN	SCHEIBE M12 13X24X2,5 U6592 ZN	ARANDELA M12 13 X24X2,5 ZN

ANTERIORI LATERALI FRONT SIDE



RANGHI LATERALI ANTERIORI / SIDE FRONT RANKS

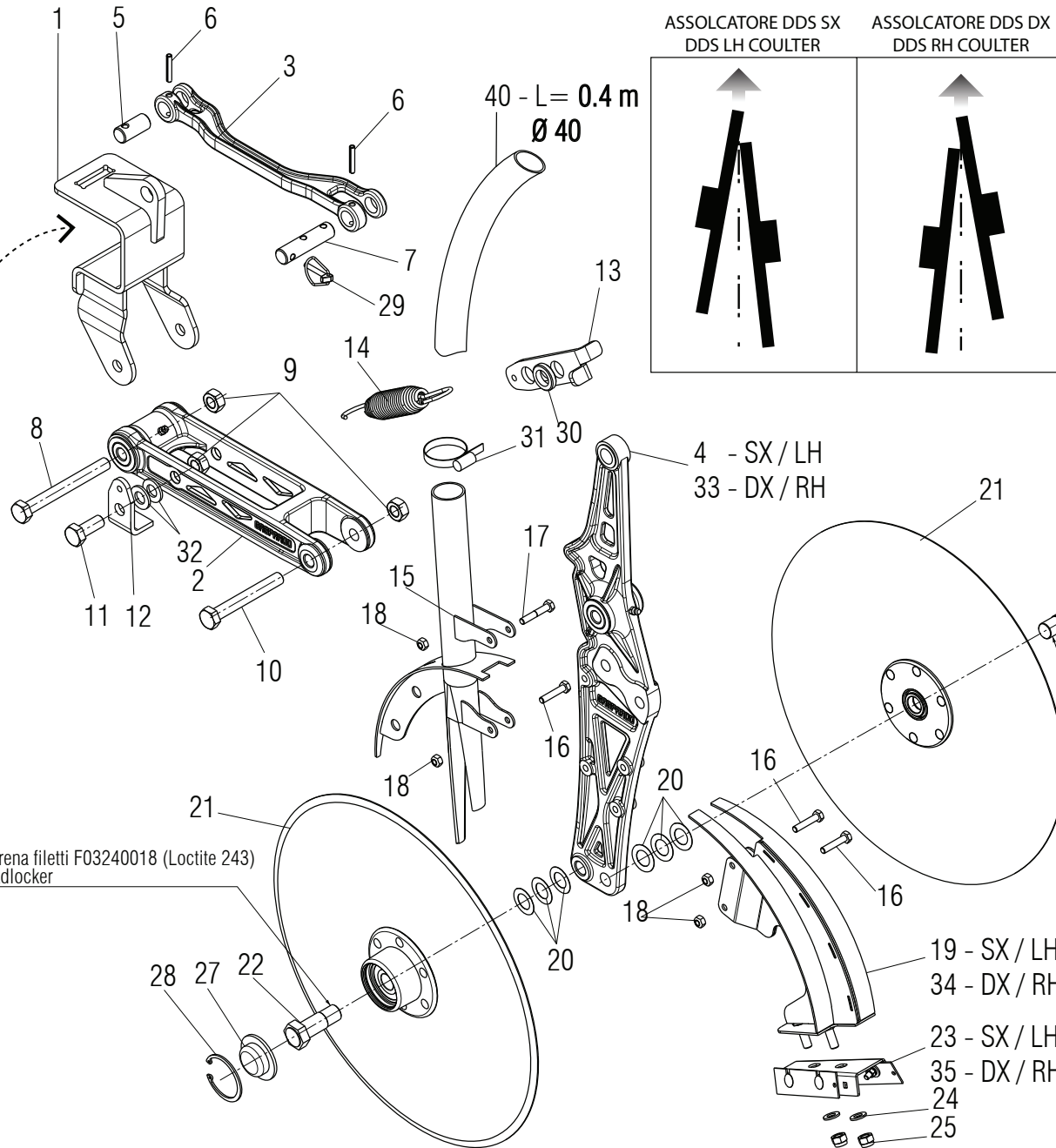
TAV. 080

Pos.	Cod.	Descrizione	Description	Benennung	Description	Description
1	M78418353	TUBO QUADRO B=70 S=5 L=1870	SQUARE TUBE B=70 S5 L.1870			
2	M78400367	SUPPORTO LATER.RANGHI SEMINA	LATERAL SUPPORT SEEDING BAR			
3	M78400366	BOCCOLA ROTAZIONE PER TUBO Q.7	BUSH OF ROTATION			
4	M78400349	SUPPORTO BARRA DI SEMINA SALD.	WELDED SEEDING BAR SUPPORT			
5	G17240661	BOCCOLA ROTAZIONE POM	ROTATION BUSHING POM			
6	G17240671	SUPPORTO INF.BOCCOLA ROTAZIONE	LOWER SUPP.ROTARY BUSHING			
7	F01020075	VITE M8X1,25X55 U5737 8.8ZN	SCR. M8X1,25X55 U5737 8.8ZN	VIS M8X1,25X 55 U5737 8.8 ZN	SCHRAUBE M8X1,25X 55 U5737	TORNILLO M8X1,25X 55 U5737
8	F01420049	ROS.M8 8,4X 32X 2 U6593 ZN	WASHER M8 8,4X32X2 U6593 ZN	RONDELLA M8 8,4X32X2 U6593 ZN	SCHEIBE M8 8,4X32X2 U6593 ZN	ARANDELA M8 8,4X32X2 U6593 ZN
9	F01220022	DADO M8X1,25 D980 8ZN	NUT M8X1,25 D980 8ZN	ECROU M8X 1,25 D980 8 ZN	MUTTER M8X 1,25 D980 8 ZN	TUERCA M8X 1,25 D980 8 ZN
10	F01010339	VITE M16X1,5X40 U5740 8.8ZN	SCR. M16X1,5X40 U5740 8.8ZN	VIS M 16X1,5X40	SCHRAUBE M 16X1,5X40	TORNILLO M 16X1,5X40
11	F01220070	DADO M16X1,5 D980 8ZN	NUT M16X1,5 D980 8ZN	ECROU.M16X 1,5 D980 8 ZN	MUTTER M16X 1,5 D980 8 ZN	TUER.M16X 1,5 D980 8 ZN
12	G17241120	SCONTRIO 110X 30-10 2F11 81	PLATE110X30-10 2HOLES 11 81			
13	F20110725	CAV.Q.B=70 M=10X1,5 L=92	U BOLT Q.B=70 M=10X1,5 L=92	CAVALIER M10SUPPORT TRACEUR	BsGELBOLZEN M10 SPURREISSERHAL	PERNO EN U M10 SOPORTE MARCA.
14	F01220033	DADO M10X1,5 D980 8ZN	NUT M10X1,5 D980 8ZN	ECROU M10X 1,5 D980 8 ZN	MUTTER M10X 1,5 D980 8 ZN	TUERCA M10X 1,5 D980 8 ZN
15	M23700370	BRACCIO PER Q.70 L=300	ARM FOR Q.70			
16	F01220048	DADO M12X1,75 D980 8ZN	NUT M12X1,75 D980 8ZN	ECROU M12X1,75 D980 8 ZN	SCHEIBE M12X1,75 D980 8 ZN	TUERCA M12X1,75 D980 8 ZN
17	F20110745	CAV.Q.B=70 M=12X1,75L=96	U BOLT Q.B=70 M=12X1,75 L=96	CAVALIER M12 POUR TUBE 70X70	BsGELBOLZEN M12 F8R ROHR 70X70	PERNO EN U M12 X TUBO 70X70
18	F05100156	TAPPO PER TUBO 70X70	PLASTIC CAP X PIPE 70X70 TK.5	BOUCHON 70X 70	ROHRKOPFSTOPFEN 70X 70	TAPON 70X 70

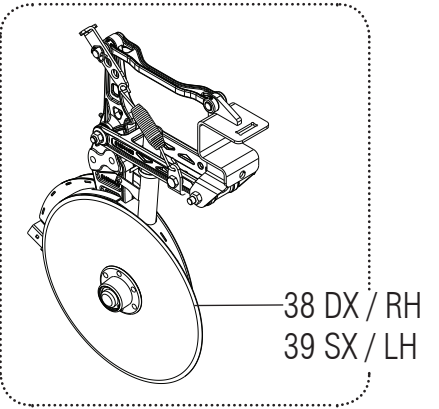
RANGHI LATERALI POSTERIORI / SIDE REAR RANKS

TAV. 090

Pos.	Cod.	Descrizione	Description	Benennung	Description	Description
1	M78419353	TUBO QUADRO B=70 S=5 L=1925	SQUARE TUBE B=70 S5			
2	M78400367	SUPPORTO LATER.RANGHI SEMINA	LATERAL SUPPORT SEEDING BAR			
3	M78400366	BOCCOLA ROTAZIONE PER TUBO Q.7	BUSH OF ROTATION			
4	M78400349	SUPPORTO BARRA DI SEMINA SALD.	WELDED SEEDING BAR SUPPORT			
5	G17240661	BOCCOLA ROTAZIONE POM	ROTATION BUSHING POM			
6	G17240671	SUPPORTO INF.BOCCOLA ROTAZIONE	LOWER SUPP.ROTARY BUSHING			
7	F01020075	VITE M8X1,25X55 U5737 8.8ZN	SCR. M8X1,25X55 U5737 8.8ZN	VIS M8X1,25X 55 U5737 8.8 ZN	SCHRAUBE M8X1,25X 55 U5737	TORNILLO M8X1,25X 55 U5737
8	F01420049	ROS.M8 8,4X 32X 2 U6593 ZN	WASHER M8 8,4X32X2 U6593 ZN	RONDELLA M8 8,4X32X2 U6593 ZN	SCHEIBE M8 8,4X32X2 U6593 ZN	ARANDELA M8 8,4X32X2 U6593 ZN
9	F01220022	DADO M8X1,25 D980 8ZN	NUT M8X1,25 D980 8ZN	ECROU M8X 1,25 D980 8 ZN	MUTTER M8X 1,25 D980 8 ZN	TUERCA M8X 1,25 D980 8 ZN
10	F01010339	VITE M16X1,5X40 U5740 8.8ZN	SCR. M16X1,5X40 U5740 8.8ZN	VIS M 16X1,5X40	SCHRAUBE M 16X1,5X40	TORNILLO M 16X1,5X40
11	F01220070	DADO M16X1,5 D980 8ZN	NUT M16X1,5 D980 8ZN	ECRO.M16X 1,5 D980 8 ZN	MUTTER M16X 1,5 D980 8 ZN	TUER.M16X 1,5 D980 8 ZN
12	G17241120	SCONTRIO 110X 30-10 2F11 81	PLATE110X30-10 2HOLES 11 81			
13	F20110725	CAV.Q.B=70 M=10X1,5 L=92	U BOLT Q.B=70 M=10X1,5 L=92	CAVALIER M10SUPPORT TRACEUR	BsGELBOLZEN M10 SPURREISSERHAL	PERNO EN U M10 SOPORTE MARCA.
14	F01220033	DADO M10X1,5 D980 8ZN	NUT M10X1,5 D980 8ZN	ECROU M10X 1,5 D980 8 ZN	MUTTER M10X 1,5 D980 8 ZN	TUERCA M10X 1,5 D980 8 ZN
15	M23700374	SUPPORTO POSTERIORE LATERALE	MOUNT REAR SIDE			
16	F01010341	VITE M16X1,5X45 U5740 8.8ZN	SCR. M16X1,5X45 U5740 8.8ZN	VIS M16X1,5 X45 U5740 8.8 ZN	SCHR.M16X1,5 X45 U5740 8.8 ZN	TORN.M16X1,5 X45 U5740 8.8 ZN
17	M78418353	TUBO QUADRO B=70 S=5 L=1870	SQUARE TUBE B=70 S5 L.1870			
18	F05100156	TAPPO PER TUBO 70X70	PLASTIC CAP X PIPE 70X70 TK.5	BOUCHON 70X 70	ROHRKOPFSTOPFEN 70X 70	TAPON 70X 70
19	F05100025	TAPPO AD ALETTE 35X35 PLT NERO	PLUG	BOUCHON FERMETURE	VERSCHLUSSPFROPFEN	TAPONCLAUSURA

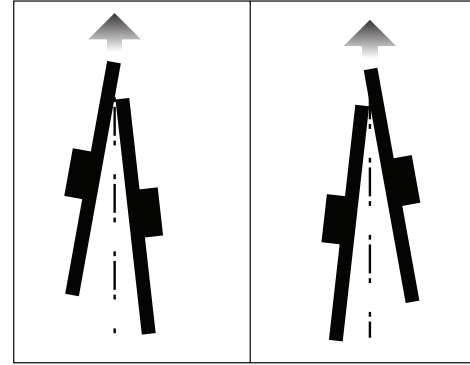


**ASSOLCATORE DDS
DDS COULTER**



ASSOLCATORE DDS SX
DDS LH COULTER

ASSOLCATORE DDS DX
DDS RH COULTER



38 DX / RH
39 SX / LH

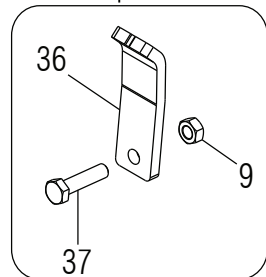
4 - SX / LH
33 - DX / RH

19 - SX / LH
34 - DX / RH

23 - SX / LH
35 - DX / RH

Con frena filetti F03240018 (Loctite 243)
Threadlocker

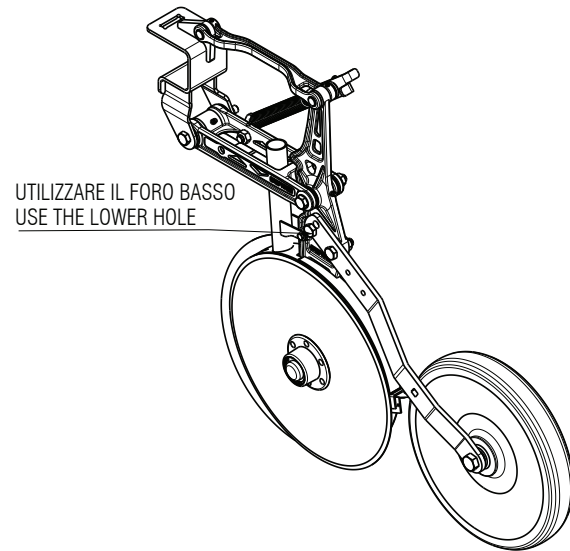
Con frena filetti F03240018 (Loctite 243)
Threadlocker



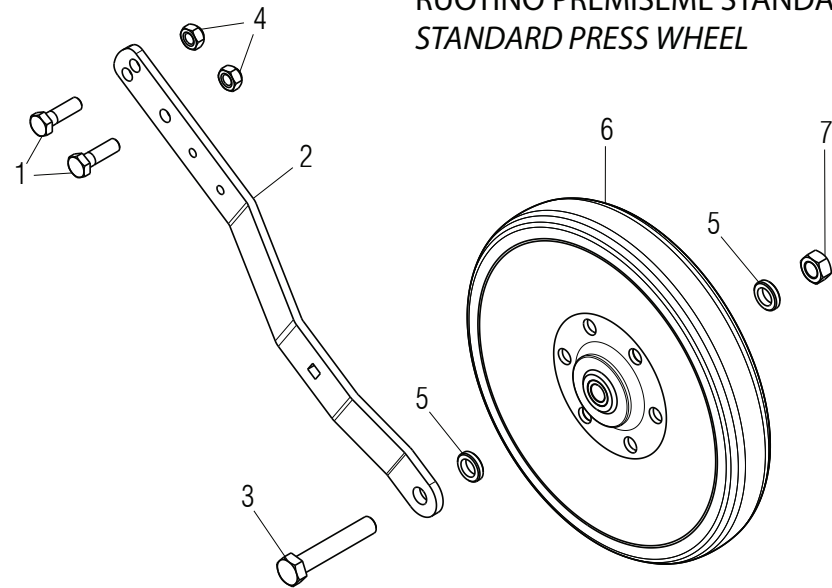
ELEMENTO OPERATORE DDS / DDS OPERATOR ELEMENT

TAV. 100

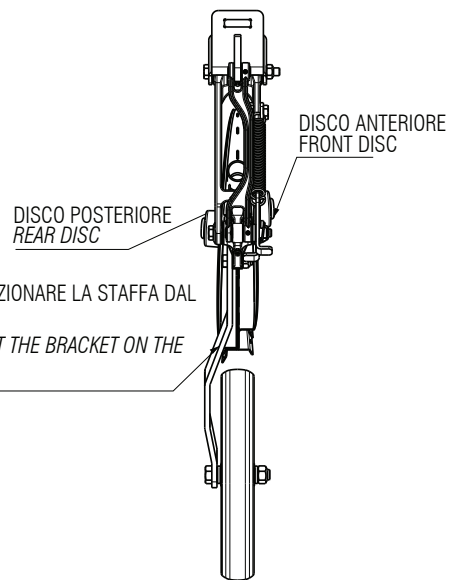
Pos.	Cod.	Descrizione	Description	Benennung	Description	Description
1	G17240621	SUPPORTO ELEMENTO	ELEMENT SUPPORT ASS.BLY			
2	G16044700	MONT.PARALLELO INFERIORE >	LOWER ARM PARALLEL ASS.BLY			
3	G19204850	BRACCIO PARALLELO SUPERIORE	UPPER PARALLEL ARM			
4	G16044770	MONT.SUPP.DISCHI SX	COMPL.SUPPORT DISC LEFT			
5	G16044110	SPINA 16X35 ZN	PIN 16X35 ZN			
6	F02100087	SPINA E.P. 5X 30 U6873 C70 BR	PIN EL. 5 X30 DIN 1481	FICHE EL. 5 X30 DIN 1481	SPANNSTIFT 5 X30 DIN 1481	CLAVIJA EL.5 X30 DIN 1481
7	M23700318	SPINA 16X65ZN	PIN 16			
8	F01010065	VITE M12X1,25X110 U5738 8.8ZN	SCR. M12X1,25X110 U5738 8.8ZN	VIS M 12X1,25X110	SCHRAUBE M 12X1,25X110	TORNILLO M 12X1,25X110
9	F01220047	DADO M12X1,25 D980 8ZN	NUT M12X1,25 D980 8ZN	ECROU M12X1,25 D980 8 ZN	MUTTER M12X1,25 D980 8 ZN	TUERCA M12X1,25 D980 8 ZN
10	F01010063	VITE M12X1,25X90 U5738 8.8ZN	SCR. M12X1,25X90 U5738 8.8ZN	VIS M 12X1,25X90	SCHRAUBE M 12X1,25X90	TORNILLO M 12X1,25X90
11	F01010283	VITE M12X1,25X30 U5740 8.8ZN	SCR. M12X1,25X30 U5740 8.8ZN	VIS M 12X1,25X30	SCHRAUBE M 12X1,25X30	TORNILLO M 12X1,25X30
12	M23700317	PIASTRINA ATT. MOLLA ZN	SPRING PLATE ATTACHMENT			
13	G16044270	PIATTO TENSIONAMENTO MOLLA ZN	TIGHTENER SPRING PLATE			
14	M78400489	MOLLA A TRAZIONE 85,8X26,6 D=3	TRACTION SPRING 85,8X26,6 D.3			
15	G16045070	COPERTURA ANTERIORE	FRONT COVER			
16	F01020408	VITE M6X1X30 U5739 8.8ZN	SCR. M6X1X30 U5739 8.8ZN	VIS M 6X1X30	SCHRAUBE M 6X1X30	TORNILLO M 6X1X30
17	F01020039	VITE M6X1X35 U5737 8.8ZN	SCR. M6X1X35 U5737 8.8ZN	VIS 6 X35 5737 8.G ZN	SCHRAUBE 6 X35 5737 8.G ZN	TORNILLO 6 X35 5737 8.G ZN
18	F01220011	DADO M6X1 D980 8ZN	NUT M6X1 D980 8ZN	ECROU M6X1 D980 8 ZN	MUTTER M6X1 D980 8 ZN	TUERCA M6X1 D980 8 ZN
19	G16045050	ASS.COPERTURA POST.SX	REAR COVER LEFT			
20	G18700220	RONDELLA 16,5 X28 X0,3 ACC.	WASHER 16X 28X ,3 STEEL			
21	G15225500	DISCO ASSOLC.PROTETTO COMPL.	FULLY PROTECTED DISC COULTER	DISQUE DU SOC PROT+G+ COMPLET		
22	G16044690	ASSE DISCO SX ZN	LEFT DISK SPINDLE			
23	M23700313	MONTAGGIO RASC. SX	LF. SCRAPER			
24	F01410051	ROS.M8 8,4X 17X1,6 U6592 ZN	WASHER M8 8,4X17X1,6 U6592 ZN	RONDELLE M8 8,4X17X1,6 U6592ZN	SCHEIBE M8 8,4X17X1,6 U6592 ZN	ARANDELA M8 8,4X17X1,6 U6592ZN
25	F01230034	DADO M8X1,25 D982 8	NUT M8X1,25 D982 8	ECROU M8X 1,25 D982 8 ZN	MUTTER M8X 1,25 D982 8 ZN	TUERCA M8X 1,25 D982 8 ZN
26	G16044680	ASSE DISCO DX ZN	RIGHT DISK SPINDLE			
27	G19002500	TAPPO FLANGIA DISCHI MT	PLUG FLANGE DISK			
28	F02050370	ANELLO E. DI 47X1,75 U7437 C70	SEEGER RING 47X 1,75 U7437 C70	SEEGER E. 47X 1,75 U7437 C70	SEEGERING E. 47X1,75 U7437 C70	ANILLO E. 47X 1,75 U7437 C70
29	F02200452	SPINA SCATTO D.4,4 B/80 ZN	SNAP PIN D4.4 B/80 ZN	FICHE A DETENTE D4.4 B/80 ZN	EINRASTSTIFT D4.4 B/80 ZN	CLAVIJA DE MUELLE D4,4 B/80 ZN
30	M78400589	DISTANZIALE D=26.9 D=16,9 L=6	SPACER D=26.9 D=16,9 L=6			
31	F02300018	FASCETTA STRING. 25/40 H.8	CLAMP 25/40 H.8	GAIN E 25/40 H.8	KLEMME 25/40 H.8	BRAZADERA 25/40 H.8
32	F01410076	ROS.M12 13X 24X2,5 U6592 ZN	WASHER 12 13X 24X2,5 U6592 ZN	RONDEL. M12 13X24X2,5 U6592 ZN	SCHEIBE M12 13X24X2,5 U6592 ZN	ARANDELA M12 13 X24X2,5 ZN
33	G16044750	MONT.SUPP.DISCHI DX	COMPL.SUPPORT DISC RIGHT			
34	G16045060	ASS.COPERTURA POST.DX	REAR COVER RIGHT			
35	M23700312	MONTAGGIO RASC. DX	RH. SCRAPER			
36	G17241140	SCONTRO DI FISSAGGIO	FIXING STRIKER PLATE			
37	F01010055	VITE M12X1,25X50 U5738 8.8ZN	SCR. M12X1,25X50 U5738 8.8ZN	VIS M12X1,25X50 U5738 8.8 ZN	SCHRA.M12X1,25X50 U5738 8.8 ZN	TORN. M12X1,25X50 U5738 8.8 ZN
38	M78400572	ASSIEME ASSOLCATORE DDS DX	RH DDS COULTER ASSEMBLY			
39	M78400573	ASSIEME ASSOLCATORE DDS SX	LH DDS COULTER ASSEMBLY			
40	F03100548	TUBO EOLO PU 40	PIPE OREGON D.40	TUBE SATURNO L D.40	ROHR OREGON D.40	TUBO OREGON D.40



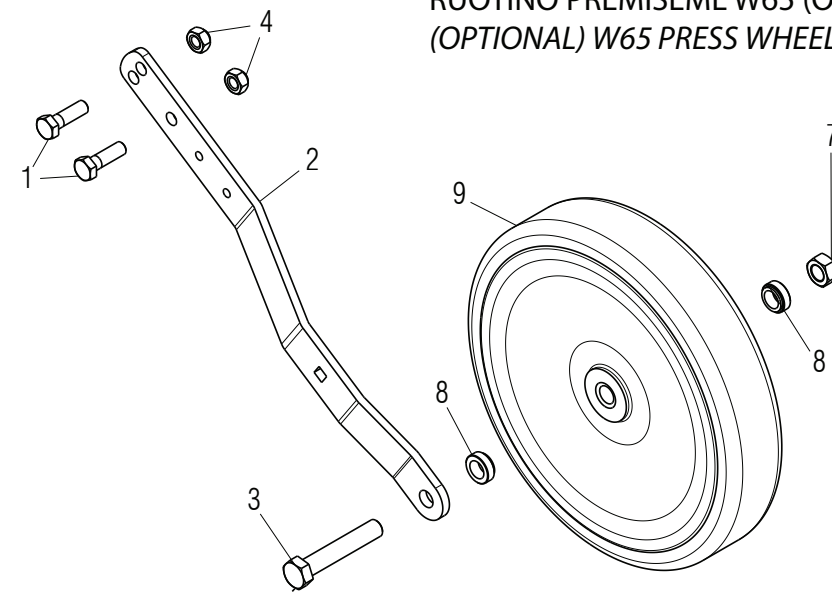
UTILIZZARE IL FORO BASSO
USE THE LOWER HOLE



RUOTINO PREMISEME STANDARD
STANDARD PRESS WHEEL



MONTAGGIO SU ELEMENTO: POSIZIONARE LA STAFFA DAL
LATO DEL DISCO ARRETRATO
MOUNTING ON THE ELEMENT: PUT THE BRACKET ON THE
SIDE OF THE REAR DISC

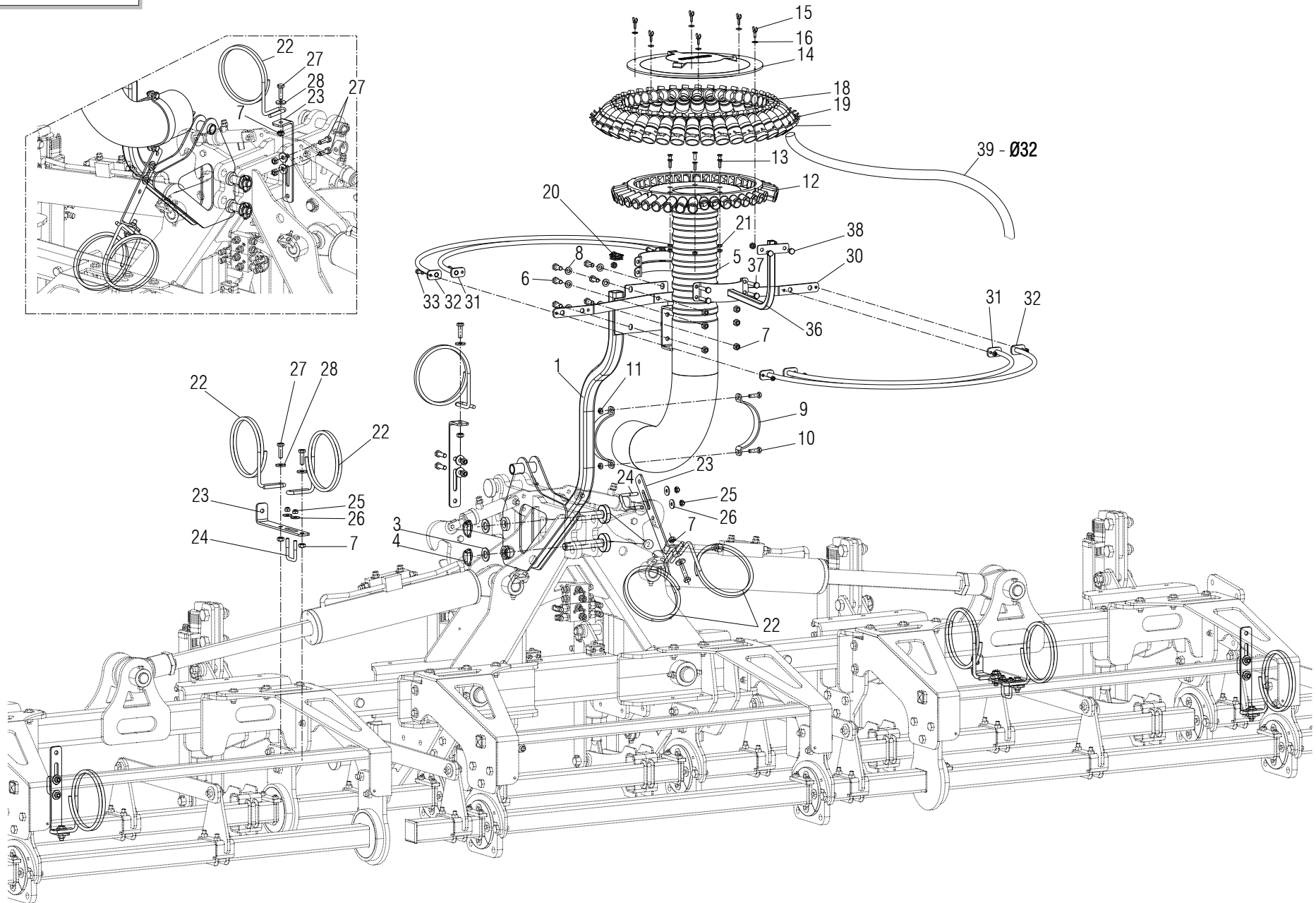


RUOTINO PREMISEME W65 (OPTIONAL)
(OPTIONAL) W65 PRESS WHEEL

RUOTINO PREMISEME / SEED PRESS WHEEL

TAV. 100

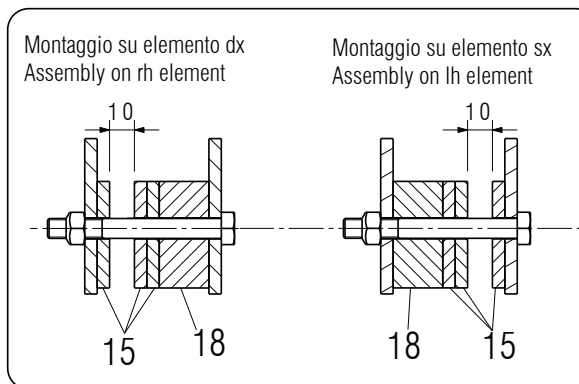
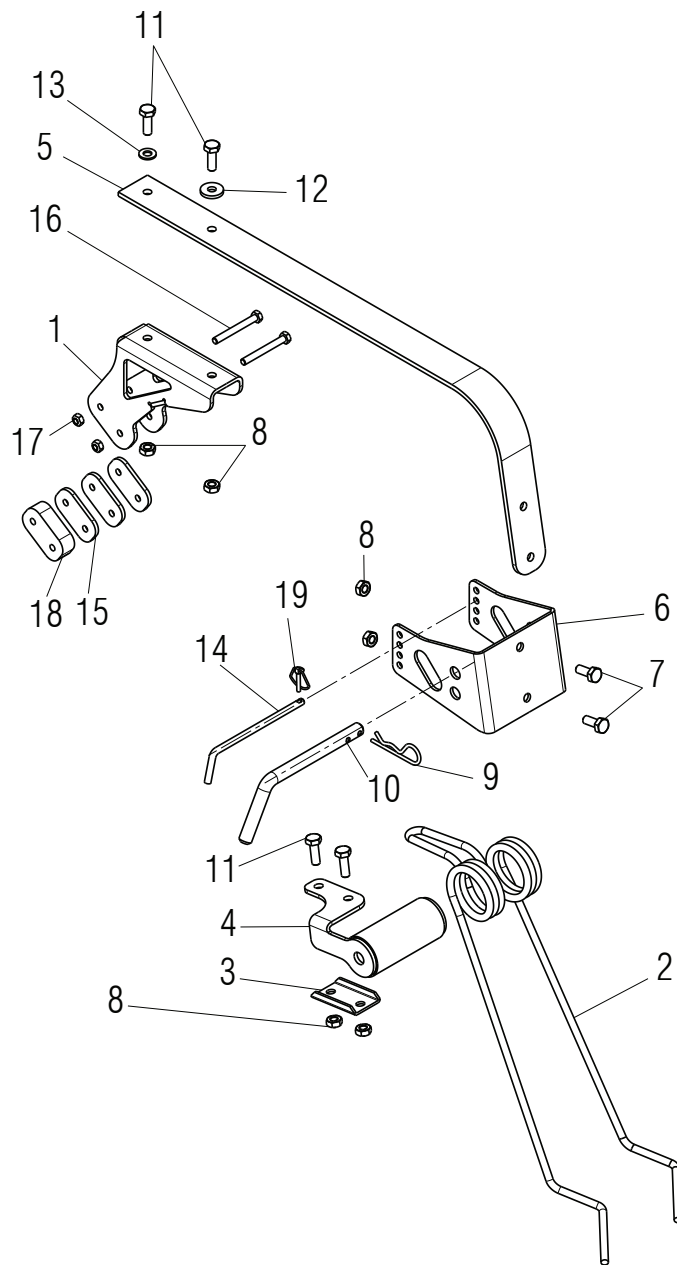
Pos.	Cod.	Descrizione	Description	Benennung	Description	Description
1	F01020152	VITE M12X1,75X40 U5737 8.8ZN	SCR. M12X1,75X40 U5737 8.8ZN	VIS M12X1,75X40 U5737 8.8 ZN	SCHRAUBE M12X1,75X40U57378.8ZN	TORNIL.M12X1,75X40 U5737 8.8ZN
2	G16044430	SUPPORTO RUOTINO	WHEEL SUPPORT			
3	F01020264	VITE M16X2X90 U5737 8.8ZN	SCR. M16X2X90 U5737 8.8ZN	VIS M16X2X90 5737 8.8 ZN	SCHRAUBE M16X2X90 5737 8.8 ZN	TORN. M16X2X90 5737 8.8 ZN
4	F01220048	DADO M12X1,75 D980 8ZN	NUT M12X1,75 D980 8ZN	ECROU M12X1,75 D980 8 ZN	SCHEIBE M12X1,75 D980 8 ZN	TUERCA M12X1,75 D980 8 ZN
5	M78400589	DISTANZIALE D=26.9 D=16,9 L=6	SPACER D=26.9 D=16,9 L=6			
6	F06150100	RUOT.PROF.330X51 TPU SOFT B/Y*	PRESS WHEEL 330X51 TPU SOFT B/Y			
7	F01220266	DADO M16X2 D980 8ZN	NUT M16X2 D980 8ZN	ECROU M16X 2 D980 8 ZN	MUTTER M16X 2 D980 8 ZN	TUERCA M16X 2 D980 8 ZN
8	G18803670	DISTANZIALE D=26.9 D=16,9 L=10	SPACER D=26.9 D=16,9 L=10			
9	F06120431	RUOTA FARMFLEX 330X65 PLA	PRESS WHEEL 330X65 PLA			



ASSIEME DISTRIBUTORE / DISTRIBUTOR ASSEMBLY

TAV. 110

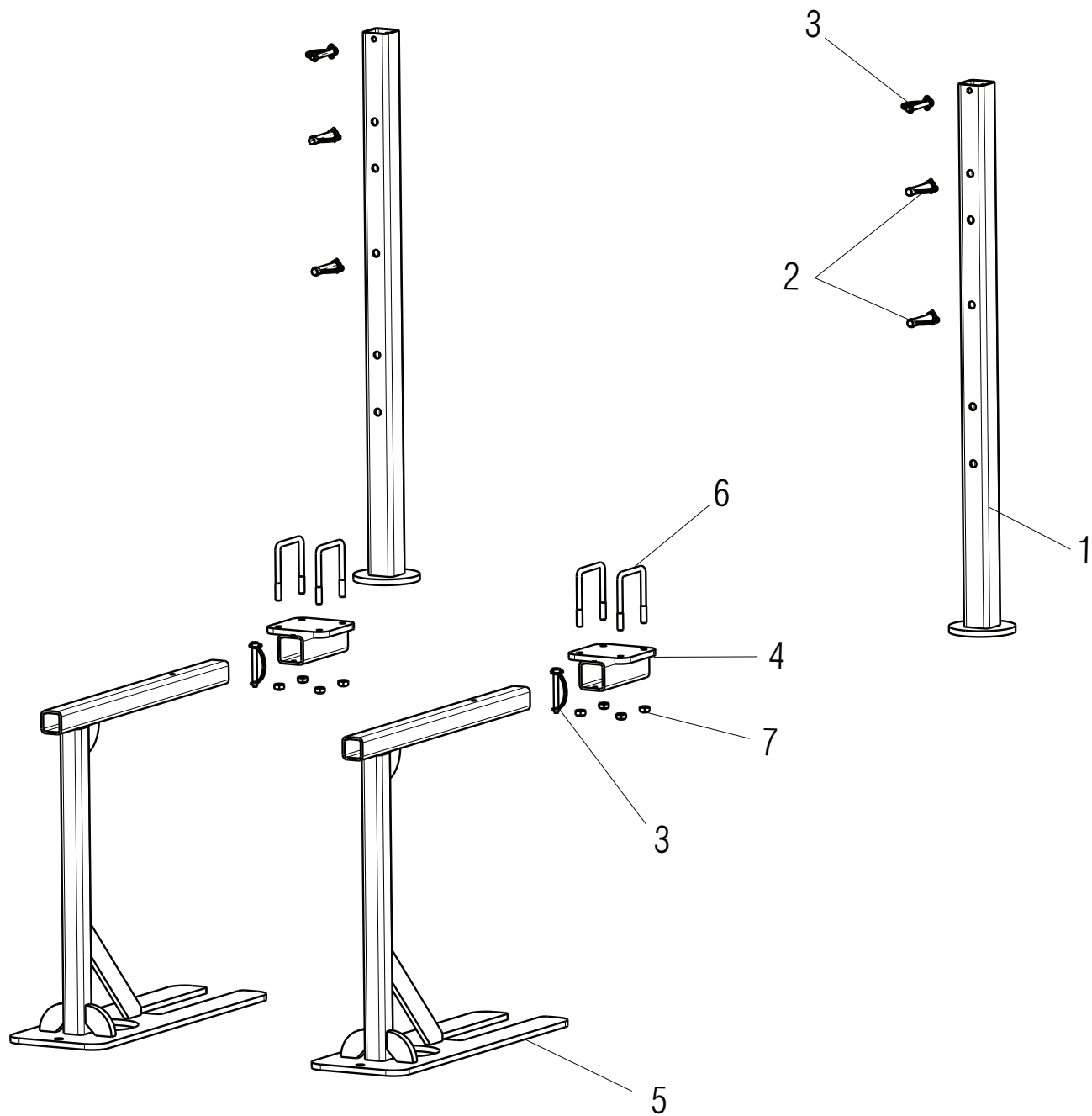
Pos.	Cod.	Descrizione	Description	Benennung	Description	Description
1	M78400949	SUPPORTO COCLEA DISTRIBUTORE	SCREW MOUNT DISTRIBUTOR			
2	F20100133	PERNO D25 L122 C43 ZN	PIN D25 L122 C43 ZN	Boulon D25 L122 C43 ZN	BOLZEN D25 L122 C43 ZN	PERNO D25 L122 C43 ZN
3	F01500034	ROS. 26 X39X4 U1749 ZN	WASHER 26X39X4 U1749 ZN	RONDELLE 26 X39X4 U1749 ZN	SCHEIBE 26 X39X4 U1749 ZN	ARANDELA 26 X39X4 U1749 ZN
4	F02200529	SPINA SCATTO D.11 H58 ZN	SNAP PIN D.11	FICHE A DETENTE D.11	EINRASTSTIFT D.11	CLAVIJA DE MUELLE D.11
5	G17322120	ASS.TUBO MISCELAT.D.150X975 C.	LONG MIXER TUBE BEND 90;			
6	F01010283	VITE M12X1,25X30 U5740 8.8ZN	SCR. M12X1,25X30 U5740 8.8ZN	VIS M 12X1,25X30	SCHRAUBE M 12X1,25X30	TORNILLO M 12X1,25X30
7	F01220047	DADO M12X1,25 D980 8ZN	NUT M12X1,25 D980 8ZN	ECROU M12X1,25 D980 8 ZN	MUTTER M12X1,25 D980 8 ZN	TUERCA M12X1,25 D980 8 ZN
8	F01410076	ROS.M12 13X 24X2,5 U6592 ZN	WASHER 12 13X 24X2,5 U6592 ZN	RONDEL. M12 13X24X2,5 U6592 ZN	SCHEIBE M12 13X24X2,5 U6592 ZN	ARANDELA M12 13 X24X2,5 ZN
9	G16124400	FASCETTA TUBO D.150	STRAP PIPE D.150 ZN	COLLIER SERRAGE TUBE D.150 ZN	ROHRSCHELLE D.150 ZN	ABRAZADERA TUBO D.150 ZN
10	F01010254	VITE M10X1,25X35 U5740 8.8ZN	SCR. M10X1,25X35 U5740 8.8ZN	VIS M 10X1,25X35	SCHRAUBE M 10X1,25X35	TORNILLO M 10X1,25X35
11	F01220034	DADO M10X1,25 D980 8ZN	NUT M10X1,25 D980 8ZN	ECRO.M10X1,25 D980 8 ZB	MUTT.M10X1,25 D980 8 ZB	TUER.M10X1,25 D980 8 ZB
12	G17920212	DISTRIBUTORE 40 U.	DISTRIBUTOR 40 OUTPUT			
13	F01030056	VITE M8X1,25X25 U5933 10.9ZD	SCR. M8X1,25X25 U5933 10.9ZD	VIS 8X25 5933 10.9 ZN	SCHRAUBE 8X25 5933 10.9 ZN	TORNILLO 8X25 5933 10.9 ZN
14	G17920200	COPERCHIO DISTRIBUTORE 40 U.	DISTRIBUTOR COVER 40 OUTPUTS	COUVERCLE DISTRIBUTEUR 40 SORT	DECKEL SZAPPARAT 40 AUSGZNG	TAPA DISTRIBUIDOR 40 SALIDAS
15	F01090203	VIT.M 6X1X20 U5449 ZN	SCREW M6X1X 20 U5449 ZN	VIS 6X1X 20 U5449 ZN	SCHRAUBE 6X1X20 U5449 ZN	TORNILLO 6X1X 20 U5449 ZN
16	F01420036	ROS.M6 6,4X 18X 2 U6593 ZN	WASHER M6 6,4X 18X2 U6593 ZN	RONDELLE M6 6,4X18X2 2 U6593ZN	SCHEIBEN M6 6,4X18X 2 U6593 ZN	ARANDELA M6 6,4X18X2 U6593 ZN
17	G19004350	MANICOTTO PIEGATO	BEND SLEEVE			
18	F02300018	FASCETTA STRING. 25/40 H.8	CLAMP 25/40 H.8	GAINE 25/40 H.8	KLEMME 25/40 H.8	BRAZADERA 25/40 H.8
19	G18900540	STRINGITUBO ZN CONC.SP	PIPE WRENCH ZN	SERRE-TUBE ZN *	ROHRZANGE ZN *	ABRAZADERA TUBO ZN
20	F05100025	TAPPO AD ALETTE 35X35 PLT NERO	PLUG	BOUCHON FERMETURE	VERSCHLUSSPFROPFEN	TAPONCLAUSURA
21	F01220022	DADO M8X1,25 D980 8ZN	NUT M8X1,25 D980 8ZN	ECROU M8X 1,25 D980 8 ZN	MUTTER M8X 1,25 D980 8 ZN	TUERCA M8X 1,25 D980 8 ZN
22	M23700347	SUPPORTO TUBO D.150	SUPPORT TUBE D.150			
23	M23700349	STAFFA PER SUPPORTO TUBO EOLO	PIPE SUPPORT BRACKET EOLO			
24	F20110705	CAV.Q.B=40 M=10X1,5 L=62	U BOLT Q.B=40 M=10X1,5 L=62	CAVALIER ZN	BsGELBOLZEN ZN	PERNO EN U ZN
25	F01220033	DADO M10X1,5 D980 8ZN	NUT M10X1,5 D980 8ZN	ECROU M10X 1,5 D980 8 ZN	MUTTER M10X 1,5 D980 8 ZN	TUERCA M10X 1,5 D980 8 ZN
26	F01420060	ROS.M10 10,5X 30X2,5 U6593 ZN	WASHER 10,5X30	RONDELLE 10,5X30	SCHEIBE 10,5X30	ARANDELA 10,5X30
27	F01010291	VITE M12X1,25X40 U5740 8.8ZN	SCR. M12X1,25X40 U5740 8.8ZN	VIS M12X1,25X40 U5740 8.8 ZN	SCHR.M12X1,25X40 U5740 8.8 ZN	TORN. M12X1,25X40 U5740 8.8 ZN
28	G18700350	RONDELLA 13 X32 X4 ZN	GROWER 13X32 ZN			
29	F01010056	VITE M12X1,25X55 U5738 8.8ZN	SCR. M12X1,25X55 U5738 8.8ZN	VIS M 12X1,25X55	SCHRAUBE M 12X1,25X55	TORNILLO M 12X1,25X55
30	M23700365	SUPPORTO TUBI SEMICIRCOLARI	SEMICIRCULAR PIPES SUPPORT			
31	M23700362	TUBO SEMICIR DE=600 CON PIAST.	SEMICIRC. PIPE WITH PLATE			
32	M23700368	TUBO SEMICIR DE=750 CON PIAST.	SEMICIRC. PIPE WITH PLATE			
33	F01020445	VITE M8X1,25X30 U5739 8.8ZN	SCR. M8X1,25X30 U5739 8.8ZN	VIS M 8X30	SCHRAUBE M 8X30	TORNILLO M 8X30
34	G16126850	FASCETTA PVC NERA L.450	PVC CLAMP BLACK L.450			
35	F03100530	TUBO EOLO PU-P D.32	EOLO TUBE PU-P D.32			
36	M78400903	STAFFA SUPPORTO LAMPEGGIANTE	BEACON SUPPORT			
37	F01010262	VITE M10X1,25X50 U5740 8.8ZN	SCR. M10X1,25X50 U5740 8.8ZN	VIS M 10X1,25X50	SCHRAUBE M 10X1,25X50	TORNILLO M 10X1,25X50
38	F01010241	VITE M10X1,25X20 U5740 8.8ZN	SCR. M10X1,25X20 U5740 8.8ZN	VIS M10X1,25X20 U5740 8.8 ZG	SCHRAUBE M10X1,25X20 U5740 8.8	TORNILLO M10X1,25X20 U5740 8.8
39	F03100530	TUBO EOLO PU-P D.32	EOLO TUBE PU-P D.32	TUBE SATURNO L D.32	ROHR OREGON D.32	TUBO OREGON D.32



ERPICE COPRISEME / SEED COVERING HARROW

TAV. 120

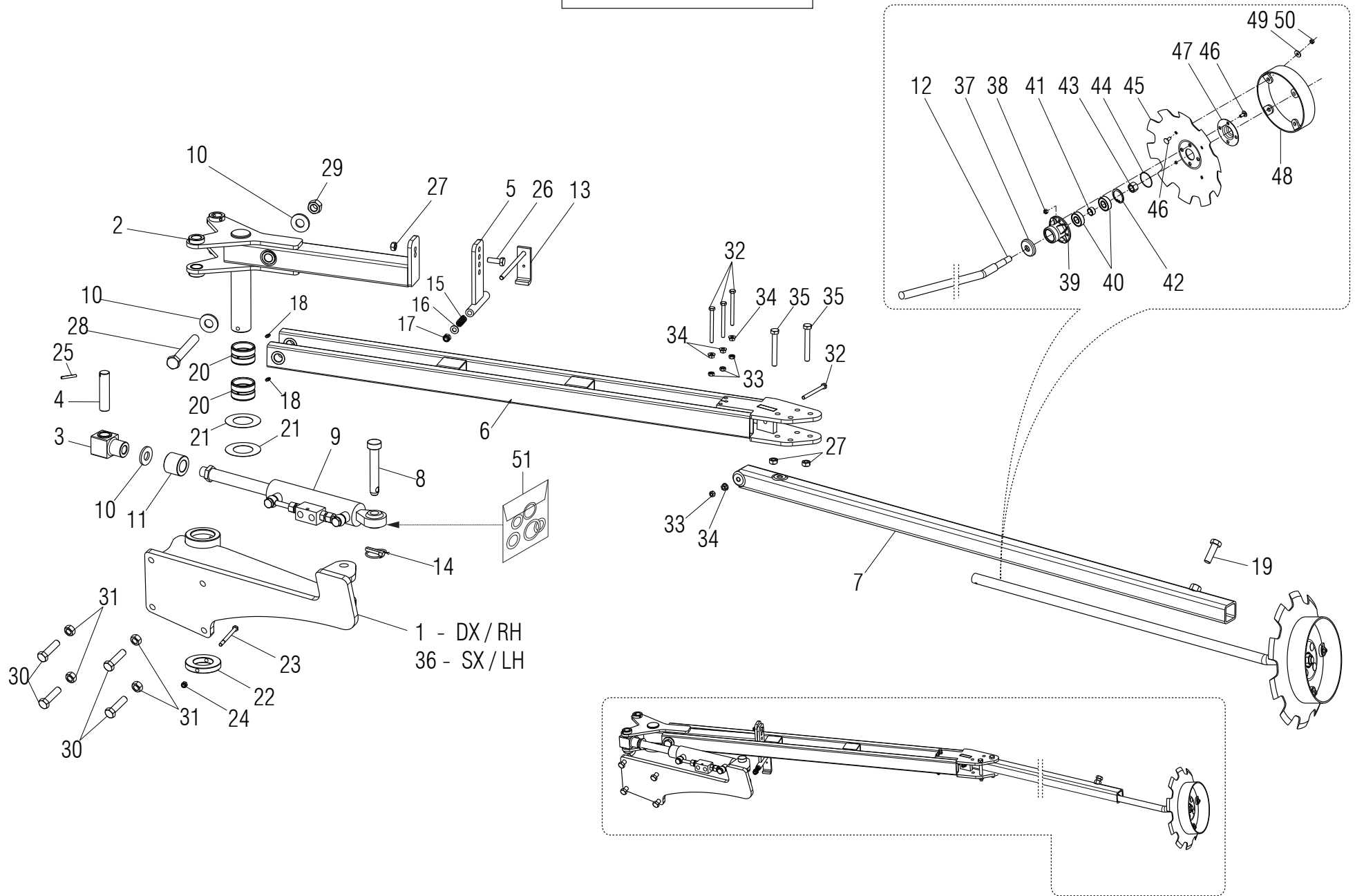
Pos.	Cod.	Descrizione	Description	Benennung	Description	Descripcion
1	M78400586	SUPPORTO ERPICE COPRISEME	COVER HARROW SUPPORT			
2	G18904710	MOLLA COPRISEME 2 PUNTE D.9	SEED COVER SPRING 2 TIPS D.9			
3	G16240780	PIASTRINA X MOLLA ERPICE ZN	PLATE SEED COVER SPRING	PLAQUETTE RESSORT COUVRE-GRAIN	PLZTTCHEN SAMENABDECKFEDER	PLAQUETA MUELLE CUBRESEMILLAS
4	M78400430	TUBO MOLLA COPRISEME	COVER HARROW SPRING PIPE			
5	M78400576	MOLLA BALESTRA B=50 H=6	LEAF SPRING			
6	M78400577	PIASTRINA DI SUPPORTO	SUPPORT PLATE			
7	F01010244	VITE M10X1,25X25 U5740 8.8ZN	SCR. M10X1,25X25 U5740 8.8ZN	VIS M 10X1,25X25	SCHRAUBE M 10X1,25X25	TORNILLO M 10X1,25X25
8	F01220034	DADO M10X1,25 D980 8ZN	NUT M10X1,25 D980 8ZN	ECRO.M10X1,25 D980 8 ZB	MUTT.M10X1,25 D980 8 ZB	TUER.M10X1,25 D980 8 ZB
9	F02200374	COPIGLIA R 4X 82 ZN	SPRING SPLIT PIN 4X82	GOUPILLE 4X82	SPLINT 4X82	PASADOR 4X82
10	M39100598	SPINOTTO MOBILE ZND	PIN	GOUJON	BOLZEN	PERNO
11	F01010250	VITE M10X1,25X30 U5740 8.8ZN	SCR. M10X1,25X30 U5740 8.8ZN	VIS M10X1,25X30 U5740 8.8 ZB	SCHR.M10X1,25X30 U5740 8.8 ZB	TORN.M10X1,25X30 U5740 8.8 ZB
12	F01500010	ROS. 10,5X28X4 D6340 C50 ZN	WASHER 10,5X28X4	RONDELLE 10,5X28X4	SCHEIBE 10,5X28X4	ARANDELA 10,5X28X4
13	F01410064	ROS.M10 10,5X 20X 2 U6592 ZN	WASHER M10 10,5X20X2 U6592 ZN	RONDEL. M10 10,5X20X2 U6592 ZN	SCHEIBE M10 10,5X20X2 U6592 ZN	ARANDEL.M10 10,5X20X2 U6592 ZN
14	M23700387	CHIAVISTELLO RUOTINO	LATCH			
15	M78400448	SCONTRO 70X40X5 2F8,5 40	FIXING PLATE 70 X40			
16	F01020083	VITE M8X1,25X70 U5737 8.8ZN	SCR. M8X1,25X70 U5737 8.8ZN	VIS M 8X70	SCHRAUBE M 8X70	TORNILLO M 8X70
17	F01220022	DADO M8X1,25 D980 8ZN	NUT M8X1,25 D980 8ZN	ECROU M8X 1,25 D980 8 ZN	MUTTER M8X 1,25 D980 8 ZN	TUERCA M8X 1,25 D980 8 ZN
18	M78400433	SCONTRO 70 X 40 - 20 2F8,5 40	FIXING PLATE			
19	F02200452	SPINA SCATTO D.4,4 B/80 ZN	SNAP PIN D4.4 B/80 ZN	FICHE A DETENTE D4.4 B/80 ZN	EINRASTSTIFT D4.4 B/80 ZN	CLAVIJA DE MUELLE D4,4 B/80 ZN



PUNTELLI DI SUPPORTO / SUPPORTS

TAV. 130

Pos.	Cod.	Descrizione	Description	Benennung	Description	Description
1	M78400945	PUNTELLO Q. B=50 L=960	PROP Q. B.50			
2	F02200584	SPINA SICUR. D. 12X70 ZN	PIN D12 L70 ZN	FICHE D12 L70 ZN	STIFT D12 L70 ZN	CLAVIJA D12 L70 ZN
3	F02200562	SPINA SICUR. D. 8X70 ZN	SNAP PIN D.8X 70 ZN	FICHE EL. D.8X70 ZN	SCHERSTIFT D.8X 70 ZN	CLAVIJA D.8X 70 ZN
4	M78400939	ATTACCO PUNTELLO POSTERIORE	REAR STAND ATT.			
5	M78400955	PUNTELLO POSTERIORE	REAR STAND			
6	F20110725	CAV.Q.B=70 M=10X1,5 L=92	U BOLT Q.B=70 M=10X1,5 L=92	CAVALIER M10SUPPORT TRACEUR	BsGELBOLZEN M10 SPURREISSERHAL	PERNO EN U M10 SOPORTE MARCA.
7	F01220033	DADO M10X1,5 D980 8ZN	NUT M10X1,5 D980 8ZN	ECROU M10X 1,5 D980 8 ZN	MUTTER M10X 1,5 D980 8 ZN	TUERCA M10X 1,5 D980 8 ZN

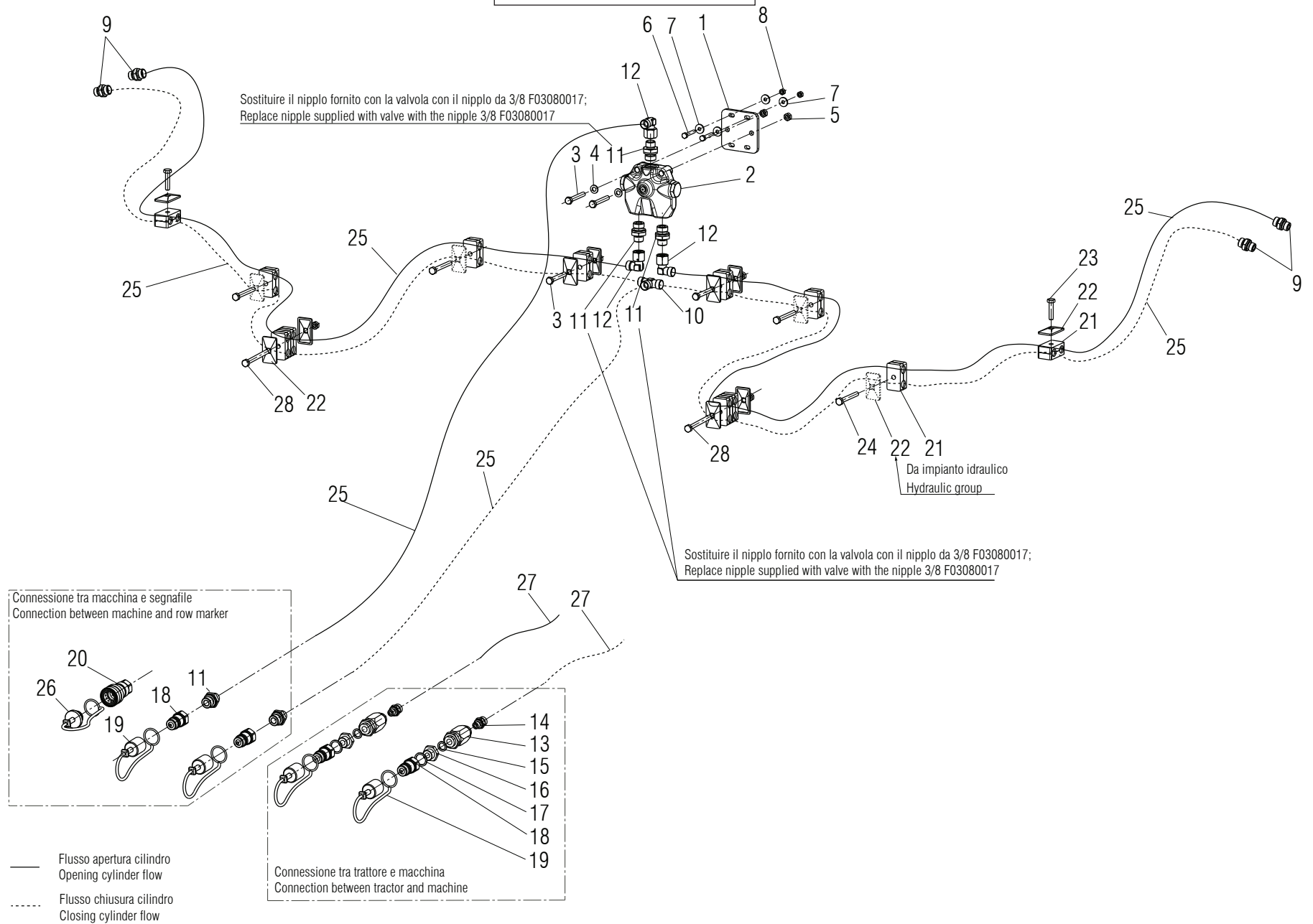


SEGNAFILE / ROW MARKER

TAV. 140

Pos.	Cod.	Descrizione	Description	Benennung	Description	Descripcion
1	G17312600	ASS.SUPP.SEGN.DX	ASSY R.ROWMARKER SUPPORT			
2	G17310070	ASS.ROTAZIONE BRACCIO	TURN ARM SET			
3	G17310130	MONT.ATTACCO PISTONE	COMPL.PISTON LINK			
4	G17310380	SPINA 25X97 ZN	PIN 25 X97 ZN			
5	G17310290	ASS.FINE CORSA	END OF STROKE			
6	M78400964	ASS.SUPPORTO SEGNAFILE	ROW MARKET SUPPORT			
7	G17313151	ASS.BRACCIO SEGNAFILE	ROW MARKER ARM			
8	F20100047	PERNO D22 L108 C43 ZN	BOLT D22 L108 C43 ZN	GOUJON SUPPORT	BOLZEN	PERNO SOPORTE
9	G13612190	CILINDRO CON VALVOLA DI BLOCCO	CYLINDER WITH STOP-VALVE	CYLINDRE AVEC VANNE DE BLOCAGE	ZYLINDER MIT BLOCKIERVENTIL	CILINDRO CON VALV. DE BLOQUEO
10	G18700160	RONDELLA 22,5 X48 X5 ZN	BONDED 22,5 X48 X5 ZN			
11	G19006300	BOCCOLA 30 X52 X42	BUSHING 30 X52 X42	BOITE 30 X52 X42	BUCHSE 30 X52 X42	CASQUILLO 30 X52 X42
12	G15111311	PERNO SEGNAFILE	ROWMARKER PIN			
13	G17310320	FERMO BRACCIO	ARM LOCK			
14	F02200529	SPINA SCATTO D.11 H58 ZN	SNAP PIN D.11	FICHE A DETENTE D.11	EINRASTSTIFT D.11	CLAVIJA DE MUELLE D.11
15	G18902330	MOLLA COMP.DISTRIB.ZN MULT.	SPRING ZN			
16	F01410064	ROS.M10 10,5X 20X 2 U6592 ZN	WASHER M10 10,5X20X2 U6592 ZN	RONDEL. M10 10,5X20X2 U6592 ZN	SCHEIBE M10 10,5X20X2 U6592 ZN	ARANDEL.M10 10,5X20X2 U6592 ZN
17	F01230048	DADO M10X1,5 D982 8ZN	NUT M10X1,5 D982 8ZN	ECR.AUTO-FREIN.M10X1,5 D982 ZN	SICHERUNGSMUTT.M10X1,5 D982 ZN	TUERCA SEGURID.M10X1,5 D982 ZN
18	F01100011	ING.M 6X1 7663-A 9SMNPB28 ZN	GREASE NIPPLE M6X1 7663-A ZN	GRAISS. A BILLE M6X1 7663A ZN	SCHMIERBUECHE M6X1 7663-A ZN	ENGRAS. DE ESFERAS M6X1 7663-A
19	F01020571	VITE M16X2X50 U5739 8.8ZN	SCR. M16X2X50 U5739 8.8ZN	VIS M16X2X50 U5739 8.8 ZN	SCHRAUBE M16 X2X50 U5739 8.8ZN	TORNIL.M16 X2X50 U5739 8.8 ZN
20	G15315980	BOCCOLA 50 X60 X40 CEMEN.	BUSHING CEMENT. 50X60X40	BAGUE 50X60X40	BUCHSE 50X60X40	CASQUILLO 50X60X40
21	G18701770	RONDELLA 50 X90 X0,5	WASHER 50 X90 X0,5	RONDELLE 50 X90 X0,5	UNTERLEGSSCHEIBE 50 X90 X0,5	ARANDELA 50 X90 X0,5
22	G17310350	ANELLO DI FERMO DI 50 DE 90	GROMMET	BAGUE D'ARRET	SPERRING	ANILLO DE BLOQUEO
23	F01020092	VITE M8X1,25X110 U5737 8.8ZN	SCR. M8X1,25X110 U5737 8.8ZN	VIS 8 X110 5737 8.G ZN	SCHRAUBE 8 X110 5737 8.G ZN	TORNILLO 8 X110 5737 8.G ZN
24	F01230034	DADO M8X1,25 D982 8	NUT M8X1,25 D982 8	ECROU M8X 1,25 D982 8 ZN	MUTTER M8X 1,25 D982 8 ZN	TUERCA M8X 1,25 D982 8 ZN
25	F02100121	SPINA E.P. 6X 40 U6873 C70 BR	ELASTIC PIN 6X40	GOUJON ELASTIQUE 6X40	SPANNHUELSE 6X40	PASADOR 6X40
26	F01020512	VITE M12X1,75X35 U5739 8.8ZN	SCR. M12X1,75X35 U5739 8.8ZN	VIS M12X1,75X35 5739 8.8 ZN	SCHR. M12X1,75X35 5739 8.8 ZN	TORN. M12X1,75X35 5739 8.8 ZN
27	F01220048	DADO M12X1,75 D980 8ZN	NUT M12X1,75 D980 8ZN	ECROU M12X1,75 D980 8 ZN	SCHEIBE M12X1,75 D980 8 ZN	TUERCA M12X1,75 D980 8 ZN
28	F01020319	VITE M20X2,5X160 U5737 8.8BR	SCR. M20X2,5X160 U5737 8.8BR	VIS M20X2.5X160 U5737 8.8 BR	SCHRAUBE M20X2.5X160 U5737 8.8	TORNILLO M20X2.5X160 U5737 8.8
29	F01220092	DADO M20X2,5 D980 8ZN	NUT M20X2,5 D980 8ZN	ECROU M20X 2,5 D980 8 ZN	MUTTER M20X 2,5 D980 8 ZN	TUERCA M20X 2,5 D980 8 ZN
30	F01020256	VITE M16X2X60 U5737 8.8ZN	SCR. M16X2X60 U5737 8.8ZN	VIS M16X 2X60 U5737 8.8 ZN	SCHRAUBE M16X2X60 U5737 8.8 ZN	TORNILLO M16X2X60 U5737 8.8 ZN
31	F01220266	DADO M16X2 D980 8ZN	NUT M16X2 D980 8ZN	ECROU M16X 2 D980 8 ZN	MUTTER M16X 2 D980 8 ZN	TUERCA M16X 2 D980 8 ZN
32	F01020088	VITE M8X1,25X90 U5737 8.8ZN	SCR. M8X1,25X90 U5737 8.8ZN	VIS M8X1,25X90 U5737 8.8 ZN	SCHR.M8X1,25X90 U5737 8.8 ZN	TORN. M8X1,25X90 U5737 8.8 ZN
33	F01220022	DADO M8X1,25 D980 8ZN	NUT M8X1,25 D980 8ZN	ECROU M8X 1,25 D980 8 ZN	MUTTER M8X 1,25 D980 8 ZN	TUERCA M8X 1,25 D980 8 ZN
34	F01260043	DADO M8 D6923 8.8ZN	NUT M8 D6923 8.8ZN	ECROU BRIDE .M8 DIN 6923 8.8 Z	GEFLANSCHTE MUTTER M8 DIN6923	TUERCA BRIDA M8 DIN 6923 8.8 Z
35	F01020168	VITE M12X1,75X90 U5737 8.8ZN	SCR. M12X1,75X90 U5737 8.8ZN	VIS M12X1,75X90 U5737 8.8 ZN	SCHRAB.M12X1,75X90 5737 8.8 ZN	TORNIL.M12X1,75X90 5737 8.8 ZN
36	G17312650	SUPPORTO SEGN.SX	ASSY L.ROWMARKER SUPPORT			
37	G16610430	FONDELLO ZN.	BOTTOM ZN.			
38	F01200244	DADO M8X1,25 U5588 6.8ZN	NUT M8X1,25 U5588 6.8ZN	ECROU M8 X1,25 U5588 6.8 ZN	MUTTER M8 X1,25 U5588 6.8 ZN	TUERCA M8 X1,25 U5588 6.8 ZN
39	G16610160	SUPP.CUSCINETTI DISCO SEGN.ZN.	GALVAN. ROWMARKER DISK BEARING	SUPPORT ROULEMENTS DISQUE TRAC	SCHEIBENLAGERHALTERUNG	SOPORTE COJINETE DE DISCO MARC
40	F04010156	CUSC.d20 D47 B14 6204 2RSH	BEARING d20 D47 B14 6204 2RSH			
41	G18801270	BOCCOLA 21 X25 X12 ZN B.	BUSHING 21 X25 X12 ZN			
42	F02050370	ANELLO E. DI 47X1,75 U7437 C70	SEEGER RING 47X 1,75 U7437 C70	SEEGER E. 47X 1,75 U7437 C70	SEEGERING E. 47X1,75 U7437 C70	ANILLO E. 47X 1,75 U7437 C70
43	F01230098	DADO M18X2,5 D982 8ZN	NUT M18X2,5 D982 8ZN	ECROU M18X 2,5 D982 8 ZN	MUTTER M18X 2,5 D982 8 ZN	TUERCA M18X 2,5 D982 8 ZN
44	F03010576	ANELLO OR 50,52X1,78 NBR	GASKET OR 50,52X1,78 NBR	BAGUE OR 50,52X1,78 NBR	RING OR 50,52X1,78 NBR	ANILLO OR 50,52X1,78 NBR
45	G16072590	DISCO SEGNAFILE D.350	ROW-MARKER DISK D.350			
46	F01060040	VITE M8X1,25X20 U5732 4.6ZG	SCR. M8X1,25X20 U5732 4.6ZG	VIS M8X1,25X20 U5732 4.6 ZN	SCHRA. M8X1,25X20 U5732 4.6 ZN	TORN. M8X1,25X20 U5732 4.6 ZN
47	G16610190	CHIUSURA CUSCINETTO ZN	END BEARING ZN			
48	G16610210	ASS.LIMITATORE PROFONDITA'	LIMITER DEPTH COUPLYNG	GR. ASS. LIMITEUR DE PROFONDEU	TIEFENBEGRENZERKOMPLEX	CONJ. LIMITADOR DE PROFUNDIDAD
49	F01420048	ROS.M8 8,4X 24X 2 U6593 ZN	WASHER M8 8,4X 24X2 U6593 ZN	RONDELLE M8 8,4X24X 2 U6593 ZN	SCHEIBEN M8 8,4X24X 2 U6593 ZN	ARANDELA M8 8,4X 24X2 U6593 ZN
50	F01220022	DADO M8X1,25 D980 8ZN	NUT M8X1,25 D980 8ZN	ECROU M8X 1,25 D980 8 ZN	MUTTER M8X 1,25 D980 8 ZN	TUERCA M8X 1,25 D980 8 ZN
51	G13612190	CILINDRO CON VALVOLA DI BLOCCO	CYLINDER WITH STOP-VALVE	CYLINDRE AVEC VANNE DE BLOCAGE	ZYLINDER MIT BLOCKIERVENTIL	CILINDRO CON VALV. DE BLOQUEO

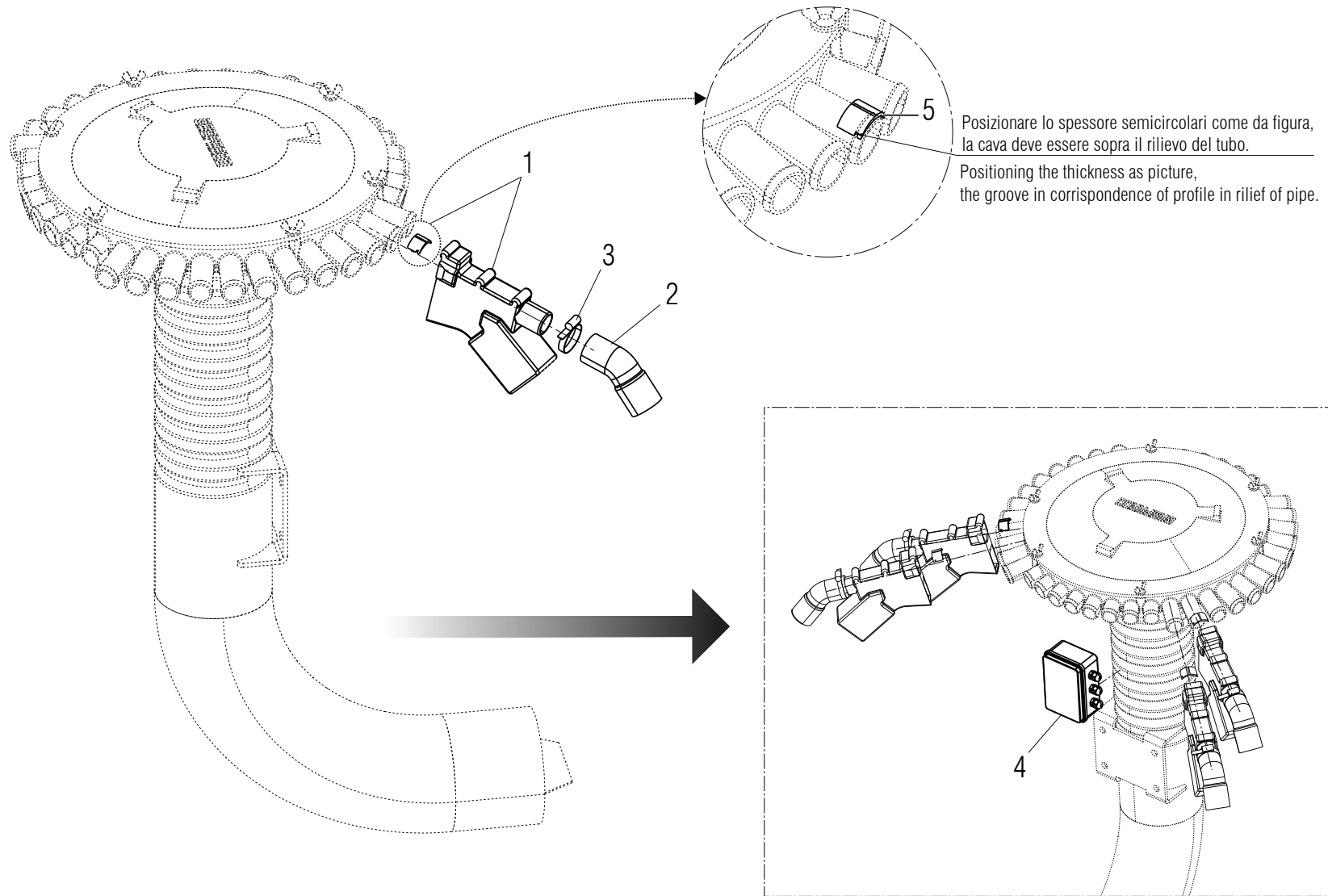
OPTIONAL



IMPIANTO IDRAULICO SEGNAFILE / ROW MARKER HIDRAULIC PLANT

TAV. 150

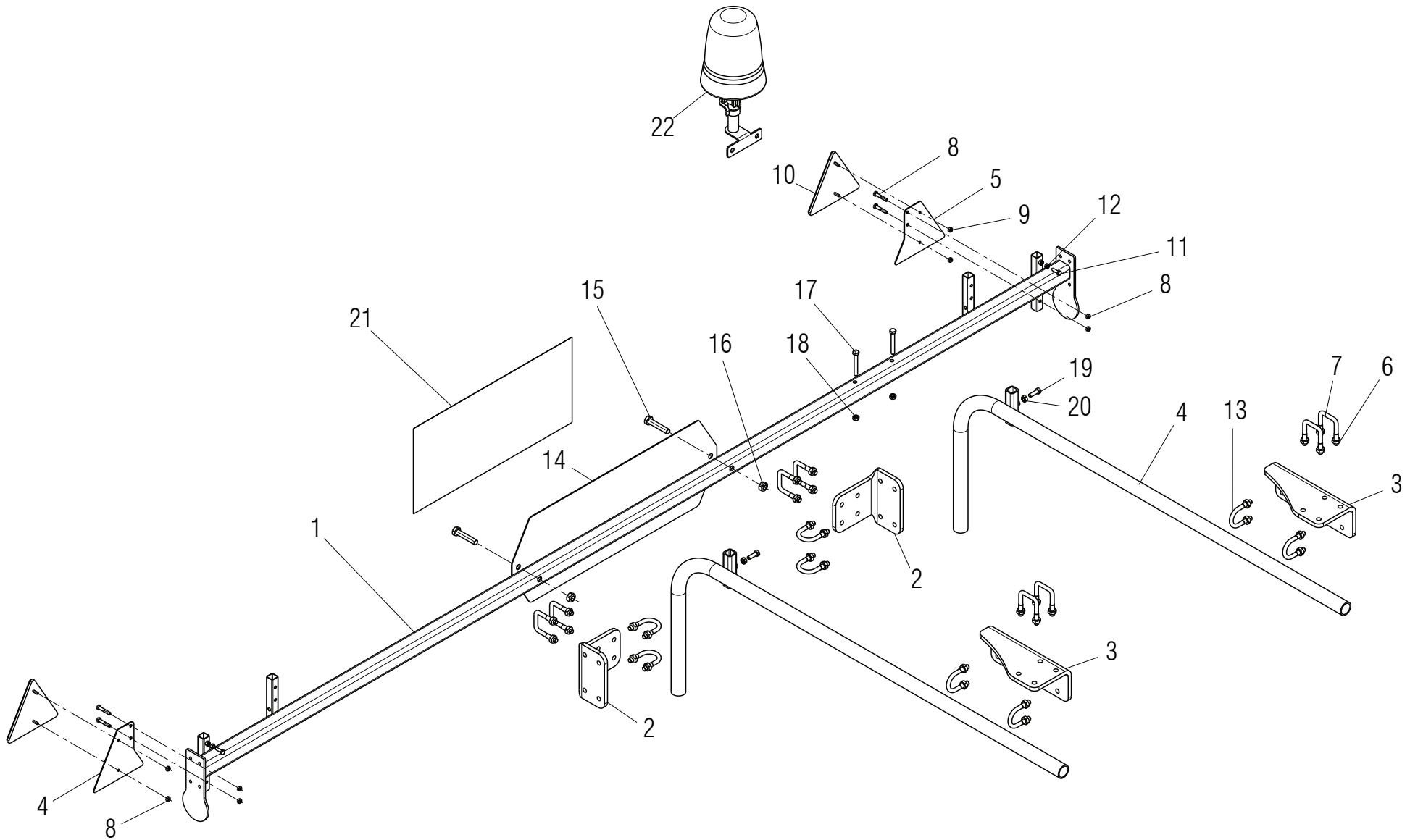
Pos.	Cod.	Descrizione	Description	Benennung	Description	Description
1	M78400967	PIASTRA SUPPORTO VALVOLA	VALVE SUPPORT PLATE			
2	G16611050	MONT.VALVOLA SEGNAFILE CN	ROWMARKER VALVE ASSY.	SOUPAPE TRACEUR COMPL.	KOMPL. SPURREISSERVENTIL	V-LVULA MARC. DE FILAS COMPL
3	F01020075	VITE M8X1,25X55 U5737 8.8ZN	SCR. M8X1,25X55 U5737 8.8ZN	VIS M8X1,25X 55 U5737 8.8 ZN	SCHRAUBE M8X1,25X 55 U5737	TORNILLO M8X1,25X 55 U5737
4	F01410051	ROS.M8 8,4X 17X1,6 U6592 ZN	WASHER M8 8,4X17X1,6 U6592 ZN	RONDELLE M8 8,4X17X1,6 U6592ZN	SCHIBE M8 8,4X17X1,6 U6592 ZN	ARANDELA M8 8,4X17X1,6 U6592ZN
5	F01220022	DADO M8X1,25 D980 8ZN	NUT M8X1,25 D980 8ZN	ECROU M8X 1,25 D980 8 ZN	MUTTER M8X 1,25 D980 8 ZN	TUERCA M8X 1,25 D980 8 ZN
6	F01020411	VITE M6X1X35 U5739 8.8ZN	SCR. M6X1X35 U5739 8.8ZN	VIS 6 X35 5739 8.G ZN	SCHRAUBE 6 X35 5739 8.G ZN	TORNILLO 6X35 5739 8.G ZN
7	F01420036	ROS.M6 6,4X 18X 2 U6593 ZN	WASHER M6 6,4X 18X2 U6593 ZN	RONDELLE M6 6,4X18X2 2 U6593ZN	SCHIBEN M6 6,4X18X 2 U6593 ZN	ARANDELA M6 6,4X18X2 U6593 ZN
8	F01220011	DADO M6X1 D980 8ZN	NUT M6X1 D980 8ZN	ECROU M6X1 D980 8 ZN	MUTTER M6X1 D980 8 ZN	TUERCA M6X1 D980 8 ZN
9	F03080001	NIPPLO M3/8 SEAL ML12 ZN	NIPPLE M3/8 SEAL ML12 ZN			
10	F03080030	RACC.T ML12 ML12 ML12 ZN	T-UNION ML 12 ML12 ML12 ZN			
11	F03080017	NIPPLO M1/2 SEAL ML12 ZN	NIPPLE M1/2 SEAL ML12			
12	F03080062	RACC.L FL12 ML12 ZN	L-UNION FL12 ML12 ZN			
13	F03151226	REGOL.DI FLUSSO VRF 1/4' GAS	1/4' GAS VALVE VRF	SOUPAPE REG DEBIT VRF 1/4" GAZ	VENITL VRF 1/4' GAS	VæLVULA VRF 1/4' GAS
14	F03080064	NIPPLO M1/4 SEAL ML12 ZN	NIPPLE M1/4 SEAL ML12			
15	F01500012	RONDELLA IN RAME 1/4"	COPPER WASHER 13X19X1,5-1/4"	RONDELLE	SCHIBE	ARANDELA
16	F03150211	NIPPLO MM CIL-CIL 1/2-1/4 ZN	NIPLE MM CIL-CIL 1/4-1/2 ZN	NIPLE MM 1/4-1/2 ZN	NIPLE GG 1/4-1/2 ZN	NIPLE MM 1/4-1/2 ZN
17	F03151237	ROS. 21 X27X1,5 RAME -1/2"	COPPER WASHER 21X27X1,5 1/2	RONDELLE CUIVRE 21X27X1,5 1/2	SCHIBE KUPFER 21X27X1,5 1/2	ARANDELA COBRE 21X27X1,5 1/2
18	F03150935	INNESTO RAP.MASCH.1/2 A VALV.	QUICK CONNECT MALE CONE 1/2	CONNEXION RAPIDE MALE CONE 1/2	SCHNELLKUPP.GEWINDE KONISC 1/2	ACOPLAMIENT.RAP.MACHO CONO 1/2
19	F05150325	CAPPUC.F X INN.M RAP.1/2 ROSSO	COVER CONNECT F 1/2 RED	COUVERCLE CONNEXION F 1/2 ROSE	DECKEL W 1/2 SCHNELLKUPP. ROT	PAC PROTECCION F 1/2 ROJO
20	F03150948	INNESTO RAP.FEMM.1/2 A VALVOLA	QUICK-CONNECT 1/2 VALVE FEM.	ACCOUPL. RAPIDE FEM.1/2 VANNE	SCHNELLKUPPLUNG NUT 1/2	ACOPLA. RÁP.HEMB.1/2 VÁLVLULA
21	F03150992	COPPIA COLLARI X TUBO D.16	DOUBLE SUPPORT	SUPPORT DOUBLE	DOPPELHALTER	SOPORTE DOBLE
22	F03150993	PIATTO X COLLARE SUPERIORE ZN	PLATE	PLAT	PLATTE	PLATO
23	F01020449	VITE M8X1,25X35 U5739 8.8ZN	SCR. M8X1,25X35 U5739 8.8ZN	VIS M 8X35	SCHRAUBE M 8X35	TORNILLO M 8X35
24	F01020082	VITE M8X1,25X65 U5737 8.8ZN	SCR. M8X1,25X65 U5737 8.8ZN	VIS M8X1,25X65 U5737 8.8 ZN	SCHRA. M8X1,25X65 U5737 8.8 ZN	TORN. M8X1,25X65 U5737 8.8 ZN
25	F03070602	TG 3/8 R17 FL12 FL12 3300	PIPE 3/8 R17 FL12 FL12 3300			
26	F05150331	CAPPUC.M X INN.F RAP.1/2 ROSSO	PROTECT. COVER CAP F 1/2 RED			
27	F03070648	TG 3/8 R17 FL12 FL12 4000	HYDRAULIC TUBE TG 3/8 R17 4000			
28	F01020088	VITE M8X1,25X90 U5737 8.8ZN	SCR. M8X1,25X90 U5737 8.8ZN	VIS M8X1,25X90 U5737 8.8 ZN	SCHR.M8X1,25X90 U5737 8.8 ZN	TORN. M8X1,25X90 U5737 8.8 ZN



TRAMLINE

TAV. 160

Pos.	Cod.	Descrizione	Description	Benennung	Description	Description
1	F05010486	DISP.ELETTR.ESCL.FILE WUK-97S	ELECT.DEVICE DISEN.ROW WUK-97S			
2	G19004350	MANICOTTO PIEGATO	BEND SLEEVE			
3	F02300018	FASCETTA STRING. 25/40 H.8	CLAMP 25/40 H.8	GAINE 25/40 H.8	KLEMME 25/40 H.8	BRAZADERA 25/40 H.8
4	F05010893	SCATOLA CABL.TRAMLIN 3+3	BOX CABLE TRAM LINE 3+3			
5	F05010832	SPESSORE FISS.ESCLUS.FILA RADO	LEVER QUADRANT PLA			



ASSIEME TABELLE STRADALI / ROAD TRANSPORT KIT

TAV. 170

Pos.	Cod.	Descrizione	Description	Benennung	Description	Description
1	M78400908	SUPPORTO TABELLE STRAD.PERFECT	SUPPORT TABLES ROAD			
2	M78400902	STAFFA SUPPORTO TUBO QUADRO	SUPPORT BRACKET SQUARE TUBE			
3	M78400935	STAFFA SUPPORTO TUBO QUADRO	SUPPORT BAR ON SQ. PIPE			
4	M78400934	SUPPORTO TUBOLARE TABELLE	TUBULAR SUPPORT TABLES			
5	M78400912	SUPPOR.CATADIOTTRO TRIANGOLARE	TRIANGULAR REFLECTOR HOLDER			
6	F01220033	DADO M10X1,5 D980 8ZN	NUT M10X1,5 D980 8ZN	ECROU M10X 1,5 D980 8 ZN	MUTTER M10X 1,5 D980 8 ZN	TUERCA M10X 1,5 D980 8 ZN
7	F20110705	CAV.Q.B=40 M=10X1,5 L=62	U BOLT Q.B=40 M=10X1,5 L=62	CAVALIER ZN	BsGELBOLZEN ZN	PERNO EN U ZN
8	F01020039	VITE M6X1X35 U5737 8.8ZN	SCR. M6X1X35 U5737 8.8ZN	VIS 6 X35 5737 8.G ZN	SCHRAUBE 6 X35 5737 8.G ZN	TORNILLO 6 X35 5737 8.G ZN
9	F01220011	DADO M6X1 D980 8ZN	NUT M6X1 D980 8ZN	ECROU M6X1 D980 8 ZN	MUTTER M6X1 D980 8 ZN	TUERCA M6X1 D980 8 ZN
10	F05010222	CATARIFRANGENTE TRIANGOLARE	TRIANGULAR REFLECTOR	CATADIOPTRÉ TRIANGULAIRE	DREIECKIGE RsCKSTRAHLER	CATAFARO TRIANGULAR
11	F01020404	VITE M6X1X20 U5739 8.8ZN	SCR. M6X1X20 U5739 8.8ZN			
12	F01200232	DADO M6X1 U5588 6.8ZN	NUT M6X1 U5588 6.8ZN	ECROU 6 UNI 5588 6.8 ZN	MUTTER 6 UNI 5588 6.8 ZN	TUERCA 6 UNI 5588 6.8 ZN
13	F20110855	CAV.T.M10X 1,5X 25 46X58,5 ZN	U BOLT T.M10X1,5X25 46X L=58,5			
14	M09400715	PIASTRA PER ETICHETTA	PLATE			
15	F01010057	VITE M12X1,25X60 U5738 8.8ZN	SCR. M12X1,25X60 U5738 8.8ZN	VIS M12X1,25X60 U5738 8.8 ZN	SCHRA.M12X1,25X60 U5738 8.8 ZN	TORN. M12X1,25X60 U5738 8.8 ZN
16	F01220047	DADO M12X1,25 D980 8ZN	NUT M12X1,25 D980 8ZN	ECROU M12X1,25 D980 8 ZN	MUTTER M12X1,25 D980 8 ZN	TUERCA M12X1,25 D980 8 ZN
17	F01020077	VITE M8X1,25X60 U5737 8.8ZN	SCR. M8X1,25X60 U5737 8.8ZN	VIS M8X1,25X60 U5737 8.8 ZN	SCHRAU. M8X1,25X60 U5737 8.8ZN	TORN. M8X1,25X60 U5737 8.8 ZN
18	F01220022	DADO M8X1,25 D980 8ZN	NUT M8X1,25 D980 8ZN	ECROU M8X 1,25 D980 8 ZN	MUTTER M8X 1,25 D980 8 ZN	TUERCA M8X 1,25 D980 8 ZN
19	F01020440	VITE M8X1,25X25 U5739 8.8ZN	SCR. M8X1,25X25 U5739 8.8ZN	VIS M8X1,25X25 U5739 8.8 ZN	SCHRAUBE M8X1,25X25U5739 8.8ZN	TORNIL.M8X1,25X25 U5739 8.8 ZN
20	F01200244	DADO M8X1,25 U5588 6.8ZN	NUT M8X1,25 U5588 6.8ZN	ECROU M8 X1,25 U5588 6.8 ZN	MUTTER M8 X1,25 U5588 6.8 ZN	TUERCA M8 X1,25 U5588 6.8 ZN
21	F20010111	ETICH.IDENT. INSIEME SI VINCE	LABEL	ETIQUETTE	AUFKLEBER	ETIQUETA
22	F05011135	LAMPEGGIANTE CON INN.TUBOLARE	BEACON LIGHT			

**USATE SEMPRE RICAMBI ORIGINALI
ALWAYS USE ORIGINAL SPARE PARTS
IMMER DIE ORIGINAL-ERSATZTEILE VERWENDEN
EMPLOYEZ TOUJOURS LES PIECES DE RECHANGE ORIGINALES
UTILIZAR SIEMPRE REPUESTOS ORIGINALES**



Servizio Assistenza Tecnica - After Sales Service

+39 049 9289960

+39 049 9289836

Servizio Ricambi - Spare Parts Service

+39 049 9289888

DEALER:



MASCHIO GASPARDO SpA

Registered Office and Production Plant

Via Marcello, 73 - 35011 Campodarsego (Padova) - Italy

Tel. +39 049 9289810

Fax +39 049 9289900

info@maschio.com

www.maschionet.com

MASCHIO DEUTSCHLAND GMBH

Außere Nürnberger Straße 5

D - 91177 Thalmässing - Deutschland

Tel. +49 (0) 9173 79000

Fax +49 (0) 9173 790079

dialog@maschio.de

www.maschionet.de

MASCHIO FRANCE Sarl

1 rue Denis Papin ZA

F - 45240 La Ferte St. Aubin

France

Tel. +33 (0) 2.38.64.12.12

Fax +33 (0) 2.38.64.66.79

info@maschio.fr

000 MASCHIO-GASPARDO РУССИЯ

04130, Россия,

Волгоградская область,

г. Волжский, ул. Пушкина, 117 «б».

Тел.: +7 8443 203100

факс: +7 8443 203101

e-mail: info@maschio.ru

MASCHIO GASPARDO SpA

Production Plant

Via Mussons, 7 - 33075 Morsano al Tagliamento (PN) - Italy

Tel. +39 0434 695410

Fax +39 0434 695425

info@gaspardo.it

MASCHIO GASPARDO NORTH AMERICA Inc.

112 3rd Avenue East

DeWitt - IA 52742

Ph. +1 563 6596400

Fax +1 563 6596404

info@maschio.us

MASCHIO-GASPARDO ROMANIA S.R.L.

Strada Înfrătirii, F.N.

315100 Chisineu-Cris (Arad) -România

Tel. +40 257 307030

Fax +40 257 307040

info@maschio.ro

MASCHIO IBERICA S.L.

MASCHIO-GASPARDO POLAND

MASCHIO-GASPARDO UCRAINA

GASPARDO-MASCHIO TURCHIA

MASCHIO-GASPARDO CINA

MASCHIO-GASPARDO INDIA

MASCHIO-GASPARDO KOREA