

MASCHIO

GASPARDO

UNIGREEN



ALA 700

(ONLY WITH PARALLELOGRAM LIFTING)

Cod: F07011108 2015-01

- *) Valido per Paesi UE
- *) Valid for EU member countries
- *) Valable dans les Pays UE
- *) Gilt für EU-Mitgliedsländer
- *) Válido para Países UE

- IT** PARTI DI RICAMBIO
- EN** SPARE PARTS
- DE** ERSATZTEILE
- FR** PIÈCES DÉTACHÉES
- ES** PIEZAS DE REPUESTO

ITALIANO	ENGLISH	DEUTSCH	FRANÇAIS	ESPAÑOL
----------	---------	---------	----------	---------

PARTI DI RICAMBIO

SPARE PARTS

ERSATZTEILE

PIECES DÉTACHÉES

RESPUESTOS

Le ordinazioni delle parti di ricambio vanno fatte presso i nostri concessionari di zona e devono essere sempre corredate dalle seguenti indicazioni:

Orders must be transmitted through our area dealers and should always include the following indications:

Die Bestellungen müssen bei unseren Gebietshändler abgegeben werden. Bei der Bestellung sind stets die folgenden Angaben zu machen:

Les ordres doivent être effectués auprès de nos concessionaires de zone en précisant les indications suivantes:

Los pedidos han de efectuarse en nuestros concesionarios de zona y deben incluir siempre las siguientes indicaciones:

- **Tipo, modello e numero di matricola dell'attrezzatura.** Tali dati sono stampigliati nell'apposita targhetta di cui è dotata ogni attrezzatura.
- **Numero di codice della parte richiesta** rilevabile dal catalogo ricambi.
- **Descrizione del particolare e quantità richiesta.**
- **Numero della tavola.**
- **Mezzo di trasporto.** Nel caso questa voce non sia specificata, la Ditta Costruttrice, pur dedicando a questo servizio una particolare cura, non risponde di eventuali ritardi di spedizione dovuti a cause di forza maggiore. Le spese di trasporto si intendono sempre a carico del destinatario. La merce viaggia a rischio e pericolo del committente anche se venduta franco destino.

- **Type, model and serial number of the machine.** *These data are punched on the data plate with which every implement is equipped.*
- **Code number of the required spare part.** *This will be found in the spare parts catalogue.*
- **Description of the part and required quantity.**
- **Table number.**
- **Means of dispatch.** *If this item is not indicated, the Manufacturer, while dedicating particular care to this service, shall not be held responsible for delays in delivery caused by cases of force majeure. Transport expenses shall always be at the consignee's charge. The goods travel at the purchaser's risk and peril even when sold ex destination.*

- **Typ, Modell und Serien-Nummer des Geräts.** Diese Daten stehen auf dem Typenschild, mit dem jedes Gerät versehen ist.
- **Artikel Nr. der erforderlichen Ersatzteile.** Diese stehen im Ersatzteil-Katalog.
- **Beschreibung des Ersatzteils und die erforderliche Stückzahl.**
- **Tafelnummer.**
- **Versandmittel.** Wenn dieser Punkt nicht spezifiziert wird, haftet die Herstellerfirma nicht für etwaigen Lieferverzug aufgrund höherer Gewalt, auch wenn er diesen Service besonders aufmerksam abwickelt. Die Frachtkosten gehen dagegen immer zu Lasten des Empfängers. Die Ware reist auf Gefahr und Risiko des Auftraggebers, auch wenn frei Haus Verkauft vereinbart worden ist.

- **Type, modèle et numéro de série de la machine.** *Ces données sont gravées sur la plaque d'identification de chaque outil.*
- **Numéro de code de la pièce détachée** *indiqué sur le catalogue des pièces détachées.*
- **Description de la pièce et quantité requise.**
- **Numéro de plan.**
- **Moyen d'expédition.** *Si cette rubrique n'est pas indiquée, le Constructeur, bien que soucieux de ce service, ne répond pas des retards d'expédition pour des causes de force majeure. Les frais de transport sont toujours à la charge du destinataire. La marchandise voyage aux risques et périls de l'acheteur même si vendue franco de port.*

- **Tipo, modelo y número de matricula del equipo.** Dichos datos están impresos en la relativa placa presente en el equipo.
- **Número de código de la parte requerida** presente en el catálogo respuestas.
- **Descripción de la pieza y cantidad requerida.**
- **Numero de ilustración.**
- **Medio de transporte.** En caso que este ítem no esté especificado, el Fabricante, aún prestando la debidas consideraciones para este aspecto, no responde por eventuales retardos de env'o debidos a causas de fuerza mayor. Los gastos de transporte se consideran siempre a cargo del destinatario. La mercadería viaja bajo riesgo y peligro del comprador, incluso cuando se vende franco destino.

NOTA: Il termine (Dx) Destro o (Sx) Sinistro della macchina o di parti di essa, è inteso guardando la macchina dalla parte posteriore. Le eccezioni saranno indicate.

NOTE: The symbols (Dx) right and (Sx) left, concerning the machine or single parts of it, are referred, as in the figure, to a rear view of them. Exceptions will be indicated.

N.B.: Die Merkzeichen (Dx) rechts und (Sx) links betreffen eine rückwärtige Aussicht der Maschine oder Teile von ihr (siehe Bild). Ausnahmen werden gezeigt.

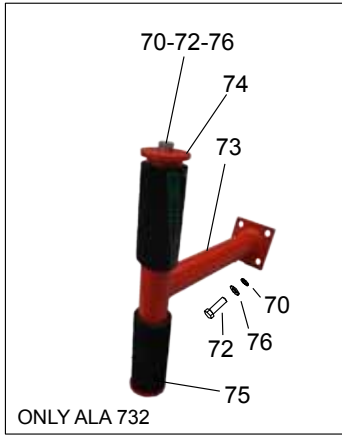
N.B.: Les références (Dx) droit et (Sx) gauche de la machine ou des parties de la même, est entendue, comme de la figure, en regardant la machine de derriere dans le sens de marche.

N.B.: La refencia (Dx) derecha o (Sx) izquierda de la máquina o de sus componentes, se entien-de, como en la figura, mirando la máquina por la parte trasera. Se indicarán las excepciones.

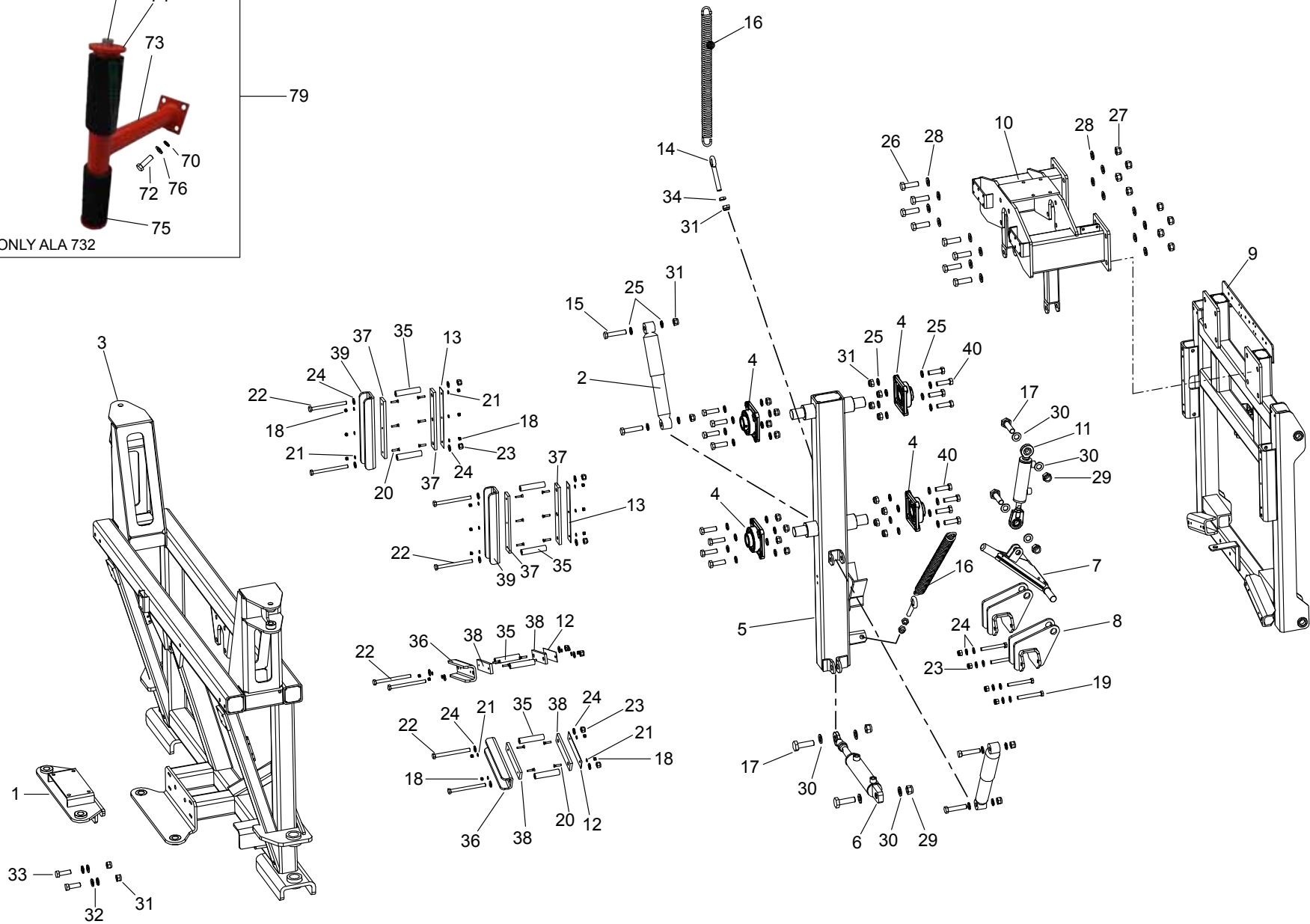
CORPO CENTRALE ALA 700 / BOOM CENTRAL FRAME ALA 700	4
CORPO CENTRALE ALA 700 / BOOM CENTRAL FRAME ALA 700	5
CORPO CENTRALE ALA 700 / BOOM CENTRAL FRAME ALA 700	6
CORPO CENTRALE ALA 700 / BOOM CENTRAL FRAME ALA 700	7
BRACCI ALA 700 / ALA 700 BOOM ARMS	8
BRACCI ALA 700 / ALA 700 BOOM ARMS	9
BRACCI ALA 700 / ALA 700 BOOM ARMS	10
BRACCI ALA 700 / ALA 700 BOOM ARMS	11
GEOMETRIA VARIABILE ALA 700 / ALA 700 VARIABLE GEOMETRY	12
GEOMETRIA VARIABILE ALA 700 / ALA 700 VARIABLE GEOMETRY	13
RICAMBI PER BARRE DISERBANTI / SPARE PARTS FOR HERBICIDE BOOMS	14
RICAMBI PER BARRE DISERBANTI / SPARE PARTS FOR HERBICIDE BOOMS	15
GETTI STANDARD ED UNIJET 2000 / STANDARD AND UNIJET NOZZLE TIP	16
GETTI STANDARD ED UNIJET 2000 / STANDARD AND UNIJET NOZZLE TIP	17
GETTI TREEJET "L" & "401" / TREEJET "L" & "401"	18
GETTI TREEJET "L" & "401" / TREEJET "L" & "401"	19
SCHEMA ALIMENTAZIONE ALA / POWER DIAGRAM ALA	20
SCHEMA ALIMENTAZIONE ALA / POWER DIAGRAM ALA	21
SCHEMA ALIMENTAZIONE ALA / POWER DIAGRAM ALA	22
SCHEMA ALIMENTAZIONE ALA / POWER DIAGRAM ALA	23
OILDRIVE 7 50-50 / OILDRIVE 7 50-50	24
OILDRIVE 7 50-50 / OILDRIVE 7 50-50	25
OILDRIVE 7 SEQ. / OILDRIVE 7 SEQ.	26
OILDRIVE 7 SEQ. / OILDRIVE 7 SEQ.	27

Corpo centrale ALA 700 / Boom central frame ALA 700

TAV. 010

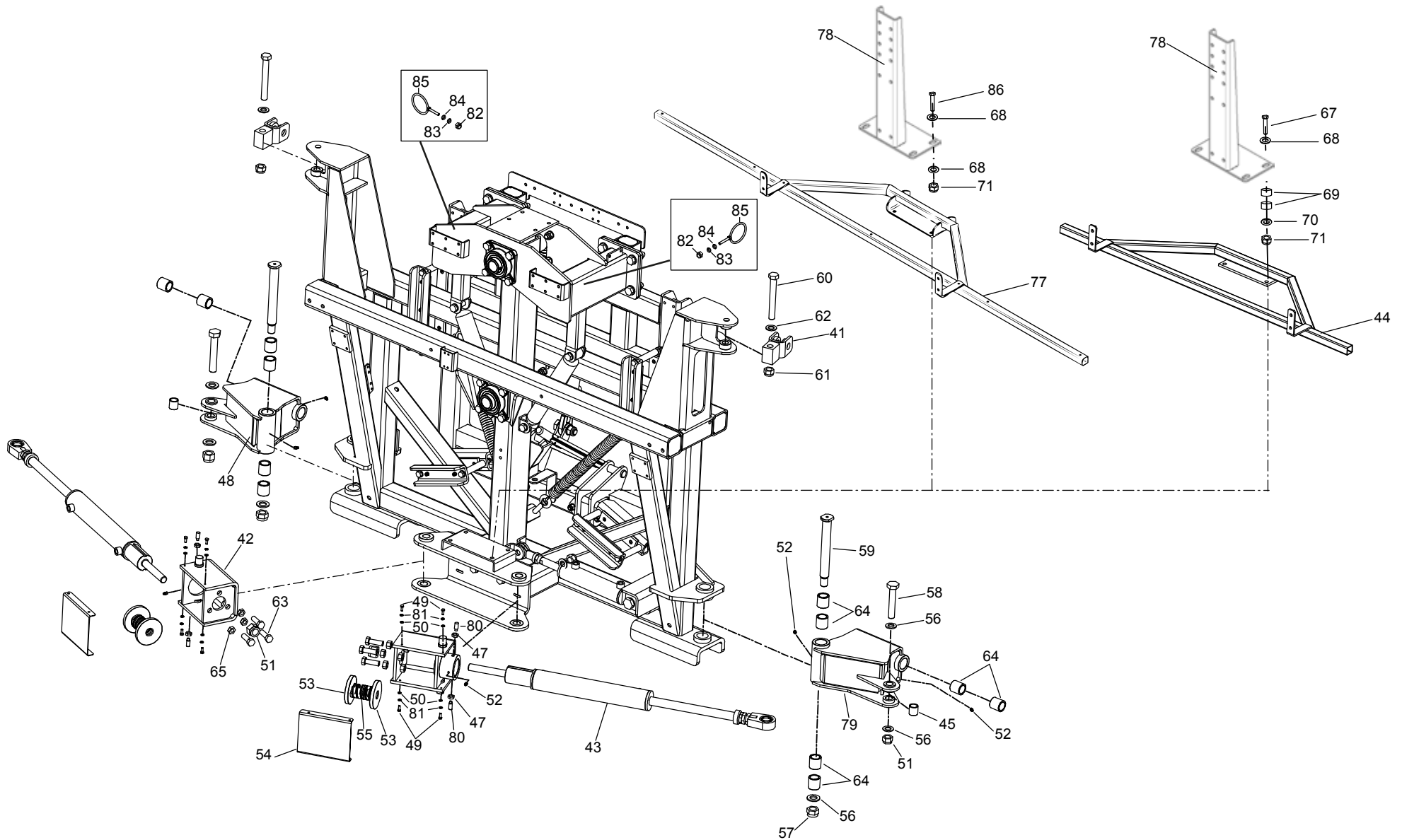


79



Corpo centrale ALA 700 / Boom central frame ALA 700

TAV. 010



Corpo centrale ALA 700 / Boom central frame ALA 700

TAV. 010

Pos.	Cod.	Descrizione	Description	Description	Benennung	Descrpcion
1	U30021095	STAFFA AMMORT.PIST.APERT.ALA724-728	/	/	/	/
2	U00330004	AMMORTIZZATORE TC.312 TA.495	/	/	/	/
3	U32060612	TEL. CENTRALE ALA 724-732 STRETTO	/	/	/	/
4	U30021030	SUPPORTO A FLANGIA QUADRA UCF-208	/	/	/	/
5	U32080726	TUBO RETT. 120X80X8 PENDOLO	/	/	/	/
6	U04410076	CIL.IDR.AL.50 ST.25 C.170 LIVELL.	/	/	/	/
7	U02110360	BRACCIO BLOCC. CENTRALE ALA 724-728	/	/	/	/
8	U30021025	SUPP.TRIANGOLO BLOCC.ALA 724-728	/	/	/	/
9	U32060579	TELAIO FISSO AULIV.ALA 724-728	/	/	/	/
10	U32060581	TELAIO SOSTEGNO PENDOLO ALA 724-728	/	/	/	/
11	U04410067	CIL.IDR.AL.40 ST.20 C.80 LIVELLANTE	CIL.IDR.AL.40 ST.20 C.80 LIV.	/	/	/
12	U06010726	DISTANZIALE 170X40X1	/	/	/	/
13	U06010727	DISTANZIALE 260X40X1	/	/	/	/
14	U32030293	OCCHIELLO TENDITORE M16 MA DX \$26	EYE TENSIONER M16 MA DX \$26	/	/	/
15	F01020245	VITE M16X2 X 80 U5737 8.8GE	/	/	/	/
16	U18020188	MOLLA A TRAZIONE \$40 FILO 7 L496	/	/	/	/
17	F01020304	VITE M20X2,5 X 70 U5737 8.8GE	BOLT M20X2,5 X 70 U5737 8.8GE	/	/	/
18	F01230024	DADO M6X1 D982 A2IX	NUT M6X1 D982 A2IX	ECROU AUTOB.NOR.10	SELBSTSP. MUTTER NOR. 10	TUERCA AUTOB. NOR. 10
19	U36070067	VTE M12X100 UNI5737 8.8 ZN	/	/	/	/
20	U36210016	VTSP EI M6X30 UNI5933 INOX A2	/	/	/	/
21	F01410034	ROS.M6 6,4X12,5X1,6 U6592 IX	WASHER M6 6,4X12,5X1,6 U6592	/	/	/
22	U36070178	VTE M12X150 UNI5737 8.8 GEOMET	SCREWM12X150 UNI5737 8.8GEOMET	/	/	/
23	F01230061	DADO M12X1,75 D982 A2 IX	NUT M12X1,75 D982 A2IX	/	/	/
24	F01410077	ROS.M12 13X 24X2,5 U6592 IX	WASHER M12 13X 24X2,5 U6592	/	/	/
25	F01410101	ROS.M16 17X 30X 3 U6592 IX	WASHER M16 17X 30X 3 U6592	/	/	/
26	F01021060	VITE M18X2,5X60 U5739 8.8GE	/	/	/	/
27	F01230305	DADO M18X 2,5 UNI7474 A2 IX	NUT M18X 2,5 UNI7474 A2 IX	/	/	/
28	F01410113	ROS.M18 19X 34X 3 U6592 IX	WASHER M18 19X 34X 3 U6592 IX	/	/	/
29	F01230130	DADO M20X 2,5 D985 A2 IX	NUT M20X2,5 D985 A2 IX	/	/	/
30	F01410125	ROS.M20 21X 37X 3 U6592 IX	WASHERS M20 21X 37X3 U6592 IX	/	/	/
31	F01230086	DADO M16X2 U7474 A2IX	NUT	/	/	/
32	F01410101	ROS.M16 17X 30X 3 U6592 IX	WASHER M16 17X 30X 3 U6592	/	/	/
33	F01021092	VITE M16X2X55 U5737 10.9GE	BOLT M16X2X55 U5737 10.9GE	/	/	/
34	F01410101	ROS.M16 17X 30X 3 U6592 IX	WASHER M16 17X 30X 3 U6592	/	/	/
35	U06010723	DIST.\$21,3X12,3 H=103 PATT.724-728	/	/	/	/
36	U30021027	SUPP.PATTINO INFERIORE ALA724-728	/	/	/	/
37	U24260051	PATTINO NYLON 40X10X260	/	/	/	/
38	U24260052	PATTINO NYLON 40X10X170	/	/	/	/
39	U30021026	SUPP.PATTINO SUPERIORE ALA724-728	/	/	/	/
40	F01021092	VITE M16X2X55 U5737 10.9GE	BOLT M16X2X55 U5737 10.9GE	/	/	/
41	U30230081	SEMICERNIERA SNODO PER FUNE 724-728	/	/	/	/
42	U30021028	SUP.AMMORTIZ.PIST.APERT.ALA724-728	/	/	/	/
43	U04410099	CIL.IDR.AL.60 ST.30 C.310 APERT. BA	HYDR.CYLIND.AL60 ST30 C310 OPN	/	/	/
44	U30021051	SUP.ASTA GETTI CENTR.ALA724-728	/	/	/	/
45	U06010728	DIST.\$30X24 H31,5 ALA728 SNODO BRAC	/	/	/	/
47	F01200079	DADO M12X1,75 U5587 6S GE	NUT M12X1,75 U5587 6S GE	/	/	/
48	U05000025	CERN.BRACC.SX ALA724-728	/	/	/	/
49	F01020419	VITE M 6X1 X 16 U5739 A2IX	SCR. M6X1X16 U5739 A2IX	VIS M6 X1 X 16 U5739 8.8 IX	SCHRAUBE M6 X1 X 16 U5739 8.	TORNIL. M6 X1 X 16 U5739 8.8
50	F01420038	ROS.M6 6,4X18X1,5 U6593 IX	WASHER M6 6,4X18X1,5 U6593 IX	RONDELLE M6 6,4X18X1,5 U6593 IX	SCHEIBE M6 6,4X18X1,5 U6593 IX	ARANDELA M6 6,4X18X1,5 6593IX
51	F01230144	DADO M24X 3 D982 8 ZN	/	/	/	/
52	U14120002	INGRASS. A-M8X1.25 UNI7663 CONICO	GREASENIPLLE M8X1.25 UNI7663-A	/	/	/
53	U06020053	DISCO \$100 ALA 724-728	/	/	/	/
54	U04020153	COPERCHIO SCATOLA AMMORTIZ.	/	/	/	/
55	U18020191	MOLLA RETTANG.\$50 SEZ.11.8X13.5 H89	SPRING RET\$50 SEZ11.8X13.5 H89	/	/	/
56	F01410148	ROS.M24 25X 44X 4 U6592 IX	/	/	/	/
57	U06040127	DEM M24X2H21 AUB.UNI7474 6S G	/	/	/	/
58	U36070391	VTE M24X120 UNI5737 8.8 GEOMET	/	/	/	/

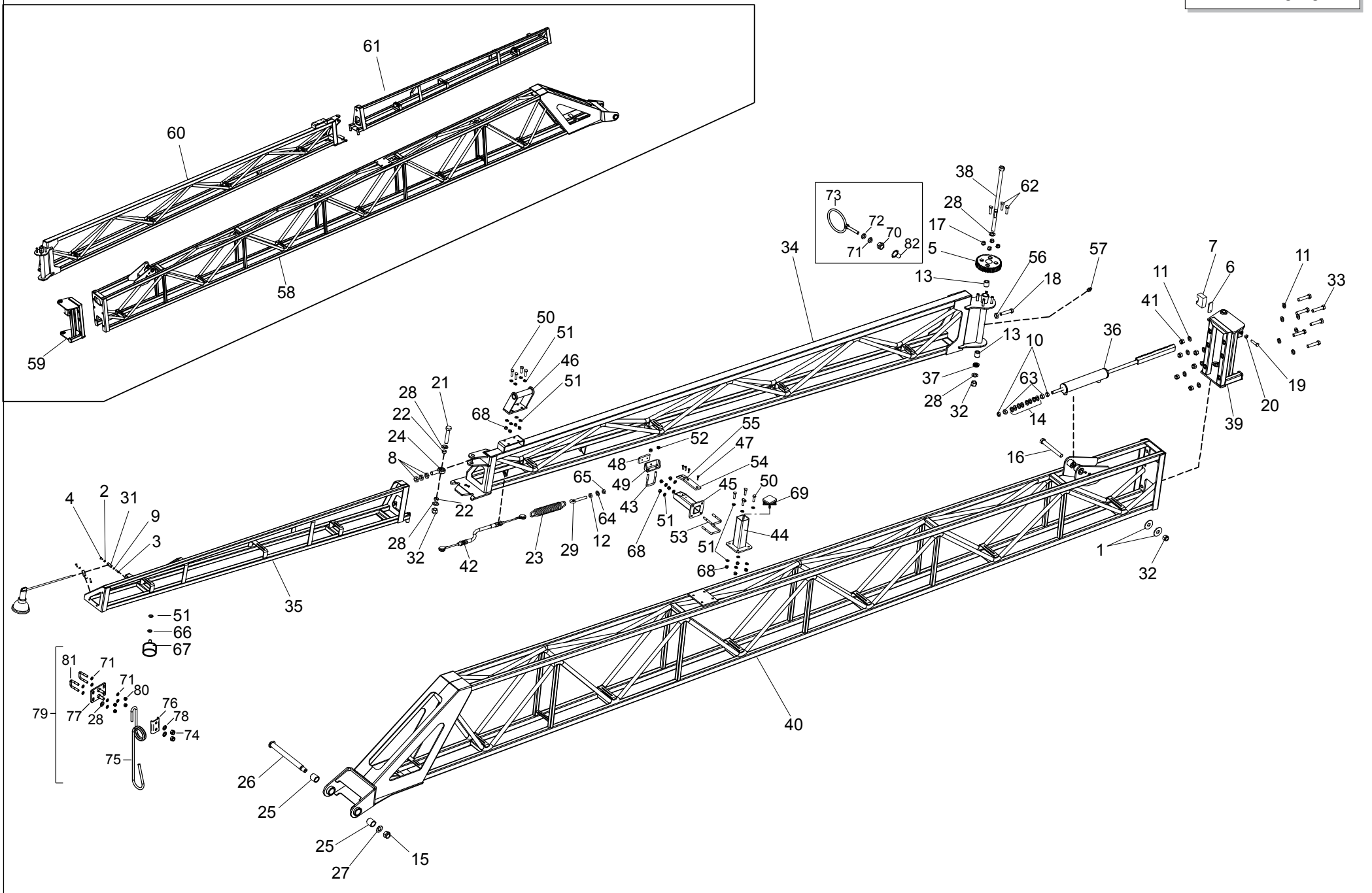
Corpo centrale ALA 700 / Boom central frame ALA 700

TAV. 010

Pos.	Cod.	Descrizione	Description	Description	Benennung	Descripion
59	U24080259	PERNO D.30 L=268 RETTIFICATO	/	/	/	/
60	U36070352	VITE M20X160 UNI5737 8.8 GEOMET	/	/	/	/
61	F01230130	DADO M20X 2,5 D985 A2 IX	NUT M20X2,5 D985 A2 IX	/	/	/
62	F01410125	ROS.M20 21X 37X 3 U6592 IX	WASHERS M20 21X 37X3 U6592 IX	/	/	/
63	F01021049	VITE M16X2X60 U5739 8.8GE	BOLT M16X2X60 U5739 8.8GE	/	/	/
64	U02040105	BOCCOLA \$40X30 L=40 SIBO 04040R	BUSHING \$40X30 L40 SIBO 04040R	/	/	/
65	F01200106	DADO M16X2 U5589 6.8GE	NUT M16X2 U5589 6.8GE	/	/	/
67	F01020498	VITE M10X1,5 X 70 U5739 A2IX	/	/	/	/
68	F01420059	ROS.M10 10,5X 30X2,5 U6593 IX	WASHER 11X30X2,5 6593 A2	RONDELLE 11X30X2,5 6593 A2	UNTERLEGSCHIEBE 11X30X2,5 6593	ARANDELA 11X30X2,5 6593 A2
69	U06010158	DIST.\$30X10,5 H=15 X BDF	/	/	/	/
70	F01410501	ROS.M10 10,5X 20X 2 U6592 IX	ROS.M10 10,5X 20X 2 U6592 IX	/	/	/
71	F01230047	DADO M10X1,5 D982 A2IX	NUT M10X1,5 D982 A2IX	ECROU M10X 1,5 D982 A2 IX	MUTTER M10X 1,5 D982 A2 IX	TUERCA M10X 1,5 D982 A2 IX
72	F01020462	VITE M10X1,5X20 U5739 8.8GE	NUT M10X1,5 X 20 U5739 8.8GE	/	/	/
73	U30021107	SUPPORT.APPOGGIO BARRA ALA732	/	/	/	/
74	U06020058	DISCO D58 ALA 732	/	/	/	/
75	U32040171	TGM VACUP.S.EL.\$45X58 SPIR.12B	TGM VACUP.S.EL.\$45X58 SPIR.12B	/	/	/
76	F01480221	RONDELLA D10 UNI 1751 A2 IX	WASHER D10 UNI 1751 A2 IX	/	/	/
77	U30021174	SUP.ASTA 6 GETTI CENTR.ALA 700	/	/	/	/
78	U30021193	SUPPORTO OILDRIVE ALA700	/	/	/	/
79	U05000026	CERN.BRACC.DX ALA724-728	/	/	/	/
80	F01050076	VITE M12X1,75X35 U5925 10.9GE	SCREW M12X1,75X35 U5925 10.9GE	/	/	/
81	F01480503	RONDELLA D6 UNI 1751 A2IX	WASHER D6 UNI 1751 A2IX	/	/	/
82	F01200245	DADO M 8X1,25 U5588 A2 IX	NUT M8X1,25 U5588 A2IX	ECROU M 8X1,25 U5588 A2 IX	MUTTER M 8X1,25 U5588 A2 IX	TUERCA M 8X1,25 U5588 A2 IX
83	F01410050	ROS.M8 8,4X 17X1,6 U6592 IX	WASHER M8 8,4X 17X1,6 U6592 IX	RONDELLE M8 8,4X 17X1,6 IX	SCHEIBE M8 8,4X 17X1,6 IX	ARANDELA M8 8,4X 17X1,6 IX
84	F01480101	ROS.G 8,4X14,4X2,7 IX	SINGLE COIL 8,4X14,4X2,7 IX	RONDEL.ELASTIQUES 8,4X14,4X2,7	FEDERRINGE 8,4X14,4X2,7 IX	ARANDELAS 8,4X14,4X2,7 IX
85	U00090145	ANELLO PASSAT.&80 CAMPO RISO	/	/	/	/
86	F01021048	VITE M10X1,5X35 U5739 8.8GE	BOLT M10X1,5X35 U5739 8.8 GE	/	/	/

Bracci ALA 700 / ALA 700 boom arms

TAV. 020



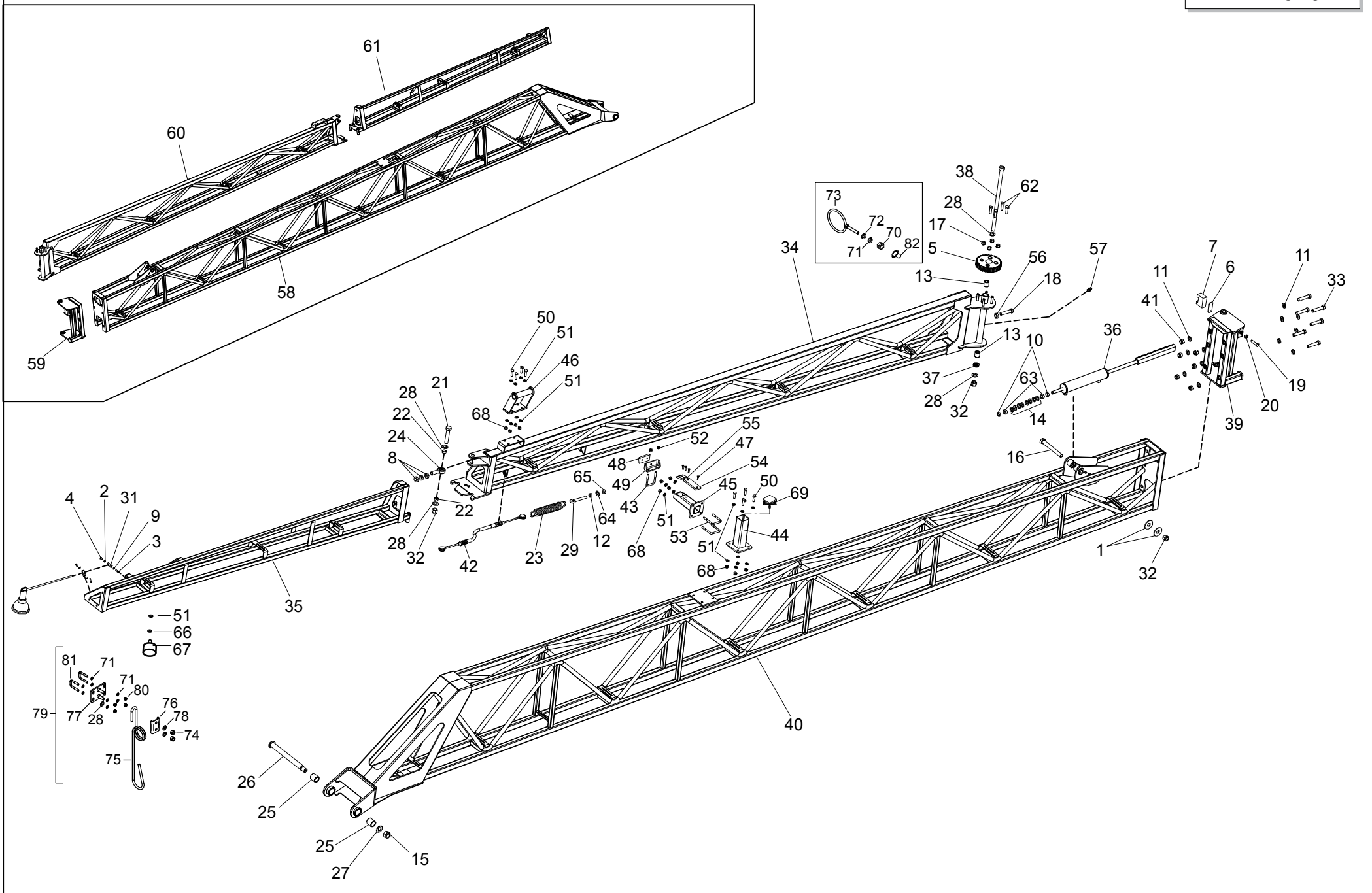
Bracci ALA 700 / ALA 700 boom arms

TAV. 020

Pos.	Cod.	Descrizione	Description	Description	Benennung	Descripcion
1	F01420122	ROS. M20 21X 60X 4 U6593 IX	WASHER M20 21X 60X 4 U6593 IX	/	/	/
2	F01230024	DADO M 6X 1 D982 A2 IX	NUT M6X1 D982 A2IX	ECROU AUTOB.NOR.10	SELBSTSP. MUTTER NOR. 10	TUERCA AUTOB. NOR. 10
3	F01020420	VIT.M 6X 1X 20 U5739 A2 IX	SCR. M6X1X20 U5739 A2IX	VIS M6 X1 X 20 U5739 8.8 IX	SCHRAUBE M6X1X20 U5739 A2 IX	TORNIL. M6 X1 X 20 U5739 8.8
4	F01020419	VITE M 6X1 X 16 U5739 A2IX	SCR. M6X1X16 U5739 A2IX	VIS M6 X1 X 16 U5739 8.8 IX	SCHRAUBE M6 X1 X 16 U5739 8.	TORNIL. M6 X1 X 16 U5739 8.8
5	U24050022	PIGNON.Z=50 MODUL.3 ALA724-728	/	/	/	/
6	U24030258	PIASTRINA GUIDA PATTINO ALA 724-728	/	/	/	/
7	U24260053	PATTINO NYLON GUIDA CREMAGLIERA	/	/	/	/
8	U06040026	DEB MB20X1,5 H9 UNI5589 6S GEOMET	DEB MB20X1,5 H9 UNI5589 6S GEO	/	/	/
9	F01480503	RONDELLA D6 UNI 1751 A2IX	/	/	/	/
10	F01200106	DADO M16X2 U5589 6.8GE	NUT M16X2 U5589 6.8GE	/	/	/
11	F01410101	ROS.M16 17X 30X 3 U6592 IX	WASHER M16 17X 30X 3 U6592	/	/	/
12	F01230074	DADO M14X2 D982 A2 IX	NUT M14X2 D982 A2IX	/	/	/
13	U02040102	BOCCOLA \$30X20 L=30 SIBO 03030R	BUSH \$30X20 L=30 SIBO 03030R	/	/	/
14	U18020175	MOLLA T. BD31,5X16,3X1,25D2093 (OLD)	/	/	/	/
14	USP000329	MOLLA TAZZA A \$40X20,4X2,25 DI (NEW)	SPRING WASHER D40X20,4X2,25 DI	/	/	/
15	U06040127	DEM M24X2H21 AUB.UNI7474 6S G	/	/	/	/
16	U36070352	VTE M20X160 UNI5737 8.8 GEOMET	/	/	/	/
17	U06000020	DADO FIS.RUOTE M12X1,5 (MOZZO 4C)	/	/	/	/
18	U36070295	VTE M16X60 UNI5737 8.8 GEOMET	BOLT M16X2X60 UNI5737 8.8 GEOM	/	/	/
19	F01020595	VITE M12X1,75X45 U5739 8.8GE	SCREW M12X1,75X 45 U5739 8.8GE	/	/	/
20	F01200477	DADO M12X1,75 U5589 6S GE	NUT M12X1,75 U5589 6S GE	/	/	/
21	F01020373	VITE M20X2,5X90 U5737 8.8 GE	BOLT M20X2,5X90 U5737 8.8 GE	/	/	/
22	U06010725	DIST.\$25X21 H10 ALA728 SNODO BRAC.	/	/	/	/
23	U18020190	MOLLA \$45 FILO \$7 LG.266 GANCIO-I	/	/	/	/
24	U32030285	TERMINALE A SNODO SAKB 20F DIN 648	/	/	/	/
25	U02040105	BOCCOLA \$40X30 L=40 SIBO 04040R	BUSHING \$40X30 L40 SIBO 04040R	/	/	/
26	U24080261	PERNO D.30 L=338 RETTIFICATO	/	/	/	/
27	F01410148	ROS.M24 25X 44X 4 U6592 IX	/	/	/	/
28	F01410125	ROS.M20 21X 37X 3 U6592 IX	WASHERS M20 21X 37X3 U6592 IX	/	/	/
29	U32030282	OCCHIELLO PER TENDITORE M14 MA DX	/	/	/	/
31	U30020836	SUPP.FILET X SPRUZ.TRAC.CON BD WORK	SUPP.FILET X SPRUZ.TRAC.CON BD WORK	/	/	/
32	F01230130	DADO M20X 2,5 D985 A2 IX	NUT M20X2,5 D985 A2 IX	/	/	/
33	F01020245	VITE M16X2 X 80 U5737 8.8GE	/	/	/	/
34	U02110369	BRACCIO INTERMEDIO DX ALA 728	/	/	/	/
34	U02110376	BRACCIO INTERMEDIO DX ALA 724	/	/	/	/
34	U02110411	BRACCIO INTERMEDIO DX ALA 732	/	/	/	/
34	U02110463	BRACCIO INT.DX ALA732 RETT.	/	/	/	/
35	U02110427	BRACCIO TERMINALE DX ALA 727	/	/	/	/
35	U02110372	BRACCIO TERMINALE DX ALA 728	/	/	/	/
36	U04410015	CILINDRO A50 S20 C240 AP.2"BRACCIO (OLD)	RAM A50 S20 C240 AP.-2"ARM	/	/	/
36	U04410118	CIL.IDR.AL.50 ST.25 C.240 BR.A (NEW)	CIL.HYD.AL.50 ST.25 C.240 BR.A	/	/	/
37	U04380071	CUSC.ASSIALE 51104 20X35X10	AXIAL BEARING 51104 20X35X10	/	/	/
38	U30050162	SPINA \$20X476 ALA728	/	/	/	/
39	U05000029	CERN.BRACC.INT-INTERM.DX ALA-700	/	/	/	/
40	U02110415	BRACCIO INTERNO DX ALA 724	/	/	/	/
40	U02110417	BRACCIO INTERNO DX ALA 728	/	/	/	/
40	U02110410	BRACCIO INTERNO DX ALA 732	/	/	/	/
41	F01230086	DADO M16X2 U7474 A2IX	NUT M16X2 U7474 A2IX	/	/	/
42	U10100046	FILO ACC \$6 LG.733 RR/M ZT. REDANCE	/	/	/	/
43	U04180106	CAVALLOTTO M10 PER QUADRO 50 L=80	/	/	/	/
44	U30021061	SUPP.VERT.APPOGGIO BRACCIO	/	/	/	/
45	U30021062	SUPP.ORIZZ.APPOGGIO BRACCIO	/	/	/	/
46	U30021063	SUPPORTO APPOGGIO BRACCIO	/	/	/	/

Bracci ALA 700 / ALA 700 boom arms

TAV. 020



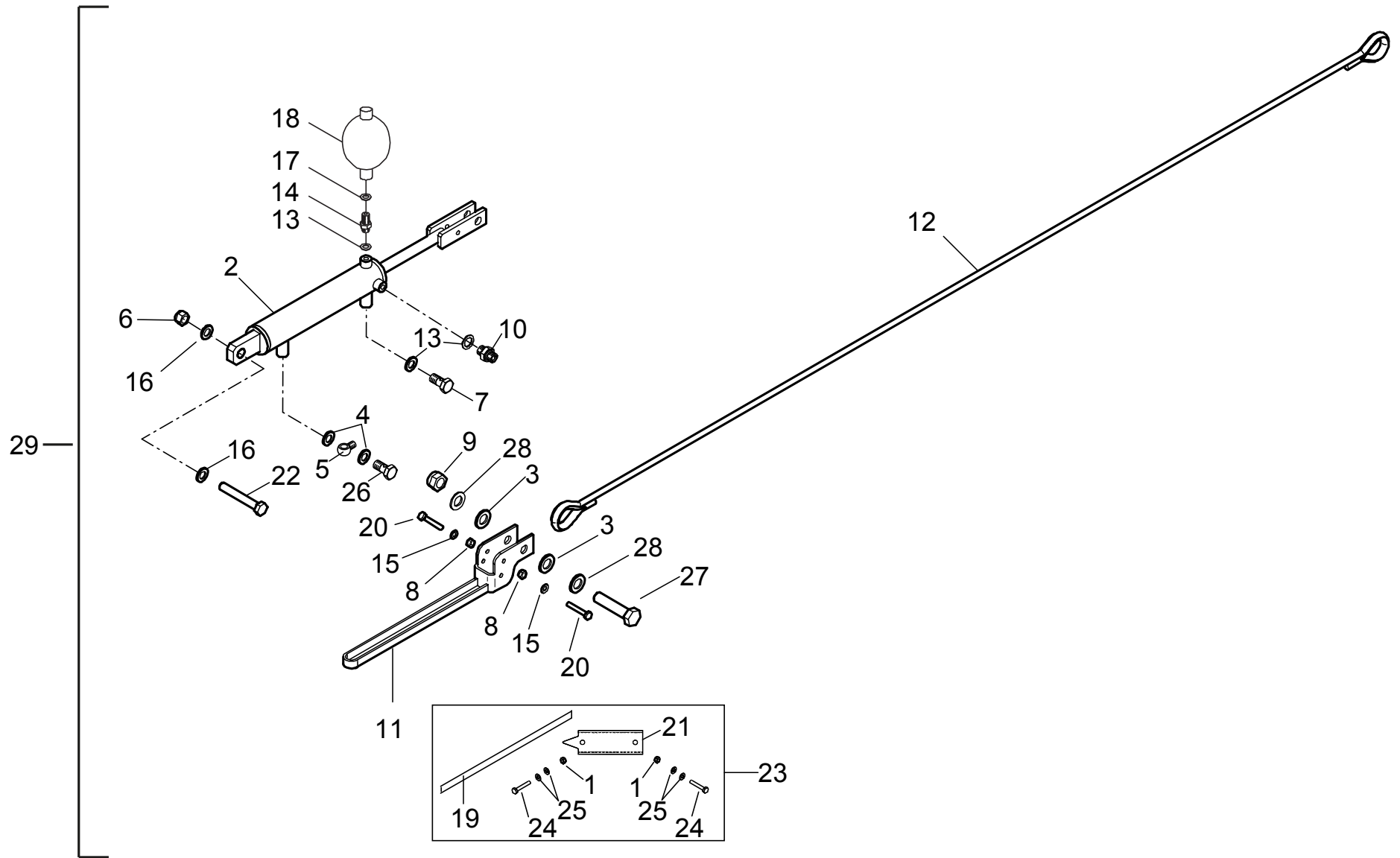
Bracci ALA 700 / ALA 700 boom arms

TAV. 020

Pos.	Cod.	Descrizione	Description	Description	Benennung	Descrpcion
47	F01030039	VITE M6X1X25 U5933 A2IX	SCR. M6X1X25 U5933 A2IX	VIS 6X25 5933	SCHRAUBE 6X25 5933/	TORNILLO 6X25 5933
48	U24260060	PATTINO NYLON 40X10X80	/	/	/	/
49	U24040424	PIASTRA FERMO CHIUS.BRACCI ALA700SZ	/	/	/	/
50	F01021014	VIT.M 8X1,25X 40 U5739 A2 IX	/	/	/	/
51	F01410501	ROS.M10 10,5X 20X 2 U6592 IX	WASHER M10 10,5X 20X2 U6592 IX	/	/	/
52	F01230047	DADO M10X1,5 D982 A2IX	NUT M10X1,5 D982 A2IX	ECROU M10X 1,5 D982 A2 IX	MUTTER M10X 1,5 D982 A2 IX	TUERCA M10X 1,5 D982 A2 IX
53	U04180104	CAVALLOTTO M10 X QUADRO 60 X BARRA	/	/	/	/
54	U24260057	PATTINO NYLON 40X10X120 ALA724-728	/	/	/	/
55	U24260058	PATTINO NYLON 40X10X63 ALA724-728	/	/	/	/
56	F01200106	DADO M16X 2 U5589 6.8 GE	NUT M16X2 U5589 6.8GE	/	/	/
57	U14120002	INGRASS. A-M8X1.25 UNI7663 CONICO	GREASENIPPLE M8X1.25 UNI7663-A	/	/	/
58	U02110414	BRACCIO INTERNO SX ALA 724	/	/	/	/
58	U02110416	BRACCIO INTERNO SX ALA 728	/	/	/	/
58	U02110408	BRACCIO INTERNO SX ALA 732	/	/	/	/
59	U05000030	CERN.BRACC.INT-INTERM.SX ALA-700	HINGE ARM INTERNAL SX ALA700	/	/	/
60	U02110374	BRACCIO INTERMEDIO SX ALA 724	/	/	/	/
60	U02110366	BRACCIO INTERMEDIO SX ALA 728	/	/	/	/
60	U02110462	BRACCIO INT.SX ALA732 RETT.	/	/	/	/
61	U02110428	BRACCIO TERMINALE SX ALA 727	/	/	/	/
61	U02110367	BRACCIO TERMINALE SX ALA 728	/	/	/	/
62	U36070393	VITE M12X1,5 X 55 U5738 8.8GE	/	/	/	/
63	F01200325	DADO M16X2 U5588 8.8GE	NUT M16X2 UNI5588 8.8 GE	/	/	/
64	F01410089	ROS. M14 15X28X2,5 U6592 IX	WASHER M14 15X28X2,5 U6592 IX	/	/	/
65	F01200308	DADO M14X2 U5587 6.8GE	NUT M14X2 U5587 6.8GE	/	/	/
66	F01480221	RONDELLA D10 UNI 1751 A2 IX	WASHER D10 UNI 1751 A2 IX	/	/	/
67	U30021068	ANTIVIBR.M10X25 M \$50X50 60SH	ANTIVIBR.M10X25 M \$50X50 60SH	/	/	/
68	F01230310	DADO M10X1,5 UNI7474 A2IX	NUT M10X1,5 UNI7474 A2IX	/	/	/
69	F05100202	TAPPO PLT X TUBO 60X60X2,6-6	TAPPO PLT X TUBO 60X60X2,6-6	/	/	/
70	F01200245	DADO M 8X1,25 U5588 A2 IX	NUT M8X1,25 U5588 A2IX	ECROU M 8X1,25 U5588 A2 IX	MUTTER M 8X1,25 U5588 A2 IX	TUERCA M 8X1,25 U5588 A2 IX
71	F01410050	ROS.M8 8,4X 17X1,6 U6592 IX	WASHER M8 8,4X 17X1,6 U6592 IX	RONDELLE M8 8,4X 17X1,6 IX	SCHEIBE M8 8,4X 17X1,6 IX	ARANDELA M8 8,4X 17X1,6 IX
72	F01480101	ROS.G 8,4X14,4X2,7 IX	SINGLE COIL 8,4X14,4X2,7 IX	RONDEL ELASTIQUES 8,4X14,4X2,7	FEDERRINGE 8,4X14,4X2,7 IX	ARANDELAS 8,4X14,4X2,7 IX
73	U00090145	ANELLO PASSAT.&80 CAMPO RISO	/	/	/	/
74	F01230061	DADO M12X1,75 D982 A2IX	NUT M12X1,75 D982 A2IX	/	/	/
75	U18020186	MOLLA X STRISCIANTE FILO \$10	GROVELING SPRING D10	/	/	/
76	U24030252	PIASTRINA FIX MOLLA STRISCIANTE	SPRING CRAWLING MOUNTING PLATE	/	/	/
77	U24040315	PIASTRA PORTAMORSETTO X STRISCIANTE	PLATE CLAMP FOR CRAWLING	/	/	/
78	F01410077	ROS.M12 13X 24X2,5 U6592 IX	WASHER M12 13X 24X2,5 U6592	/	/	/
79	U50301265	K.PROTEZ.STRISCIAN.ALA700-W15U	ALA700-W15U PROTECTION KIT	/	/	/
80	F01230308	DADO M 8X1,25 UNI7474 A2 IX	NUT M8X1,25 UNI7474 A2 IX	/	/	/
81	USP000112	CAV.T.B=30 M8X1,25 L=53 GEO	/	/	/	/
82	U02040131	BOCCOLA FILETTA M8X19,5	/	/	/	/

Geometria Variabile ALA 700 / ALA 700 Variable Geometry

TAV. 030



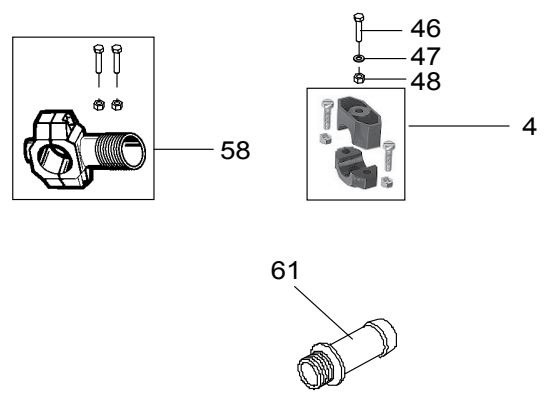
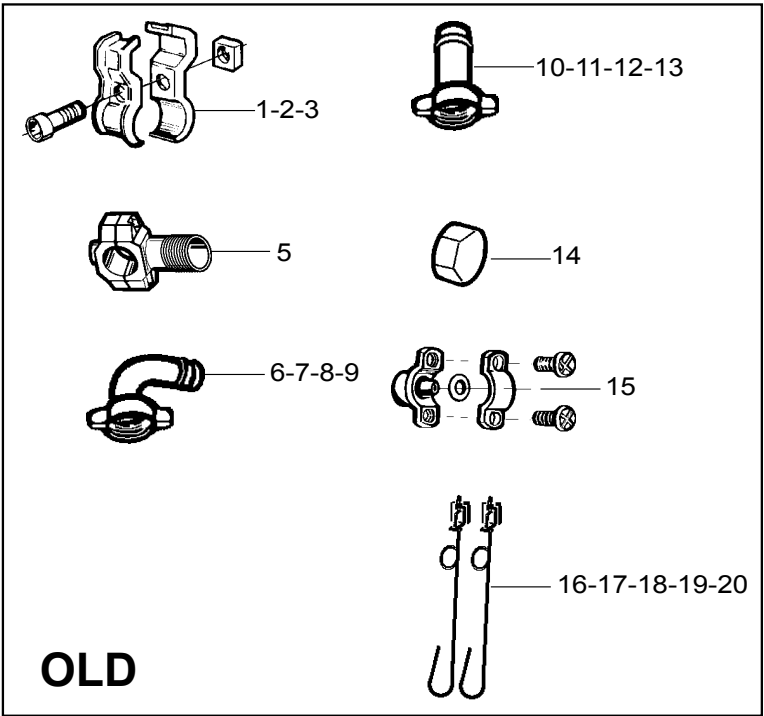
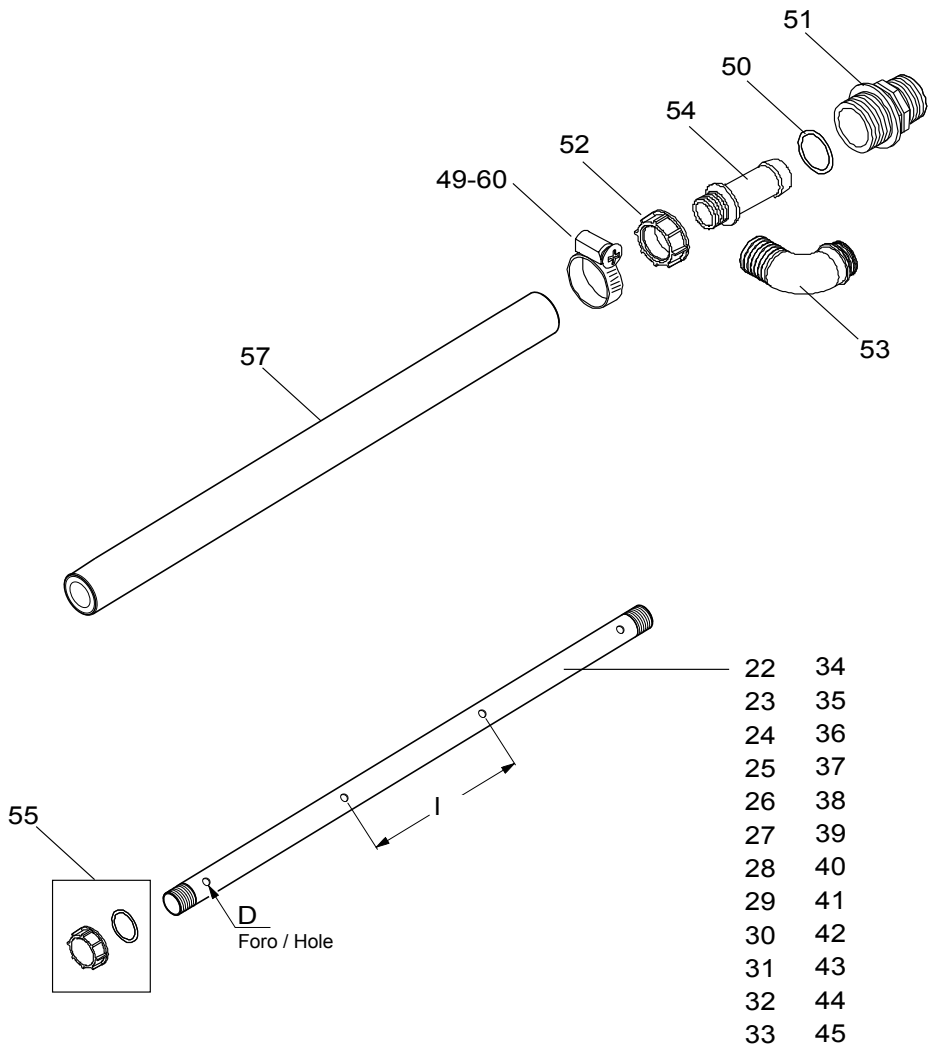
Geometria Variabile ALA 700 / ALA 700 Variable Geometry

TAV. 030

Pos.	Cod.	Descrizione	Description	Description	Benennung	Descrpcion
1	F01230024	DADO M6X1 D982 A2IX	NUT M6X1 D982 A2IX	/	/	/
2	U04410079	CIL.IDR.AL.60 ST.25 C.410 GE.V	HYDR. CIL. AL.60 ST.25 C.410 GE.V	/	/	/
3	F01420122	ROS. M20 21X 60X 4 U6593 IX	WASHER M20 21X 60X 4 U6593 IX	/	/	/
4	F03020069	RONDELLA BONDED AUTOCENT 1/4	/	/	/	/
5	F03020002	OCCHIO GAS 1/4" FILETTO 1/4-19	EYE GAS 1/4 FILETTO 1/4-19	/	/	/
6	F01230144	DADO M24X 3 D982 8 ZN	/	/	/	/
7	U32020162	TAPPO 3/8" MASCHIO CIL.60°(OLI	CAP 3/8" MALE CYL.60°(OLI	/	/	/
8	F01230047	DADO M10X1,5 D982 A2IX	NUT M10X1,5 D982 A2IX	ECROU M10X 1,5 D982 A2 IX	MUTTER M10X 1,5 D982 A2 IX	TUERCA M10X 1,5 D982 A2 IX
9	F01230130	DADO M20X2,5 D982 A2 IX	NUT M20X2,5 D982 A2 IX	/	/	/
10	F03150310	NIPPLO MM CIL-CIL 3/8-1/4 ZN	NIPPLE CYL.MALE3/8-1/4 ZN	NIPPLE MALE CYL.3/8-1/4 ZN	NIPPELZYL.3/8-1/4 ZN	NIPLE MACHO CIL.3/8-1/4 ZN
11	U10010094V	FORCELLA X BLOCCO ALA 724-728	/	/	/	/
12	U10100044	FILO ACC.D14 LG.4850 RR/M ZT.	/	/	/	/
12	U10100047	FILO ACC \$14 LG.3870 RR/M ZT. REDAN	FILO ACC \$14 LG.3870 RR/M ZT.	/	/	/
12	U10100060	FILO ACC D14 LG.5350 RR/M ZT.R	/	/	/	/
13	F03020070	RONDELLA BONDED AUTOCENT 3/8	BONDED WASHER 3/8"	/	/	/
14	F03150222	NIPPLO MM CIL-CIL 1/2-3/8 ZG	NIPPLE M-M CYL-CYL 1/2-3/8 ZG	NIPPLE H-H CIL-CIL 1/2-3/8 ZG	NIPPEL M-M CIL-CIL 1/2-3/8 ZG	NIPLE H-H CIL-CIL 1/2-3/8 ZG
15	F01410501	ROS.M10 10,5X 20X 2 U6592 IX	ROS.M10 10,5X 20X 2 U6592 IX	/	/	/
16	F01410148	ROS.M24 25X 44X 4 U6592 IX	WASHER M24 25X44X4 U6592 IX	/	/	/
17	F03020070	RONDELLA BONDED AUTOCENT 3/8	BONDED WASHER 1/2"	/	/	/
18	U18460113	ACCUM.IDROPN.O,1LT 100BAR AZOT	ACCUM.IDROPN.O,1LT 100BAR NITR	/	/	/
19	U32150937	ADES.POS.GEOM.VARIABILE ALA700	SETUP LABEL FOR BOOM 700	/	/	/
20	F01021048	VITE M10X1,5X35 U5739 8.8GE	BOLT M10X1,5X35 U5739 8.8 GE	/	/	/
21	U24040391	PIAS.IND.POS G.VAR ALA500 INOX	XFRAME PLATE G. VAR ALA 500 INO	/	/	/
22	U36070369	VTE M24X110 UNI5737 8.8 GEOMET	/	/	/	/
23	USP000545	K.INDICATORE GEOM.VAR. ALA 700 (U50181219)	/	/	/	/
24	F01021089	VITE M6X1X100 U5737 A2 IX	BOLT M6X1X100 U5737 A2 INOX	/	/	/
25	F01410034	ROS.M6 6,4X12,5X1,6 U6592 IX	WASHER M6 6,4X12,5X1,6 U6592	/	/	/
26	F03020004	VITE FORATA GAS 1/4"-19	PIERCED SCREW GAS 1/4"-19	VIS PERCE' GAS 1/4"-19	GEPIERT SCHRAUBE GAS 1/4"-19	TORNILLO PERFORADO GAS 1/4"-19
27	F01021102	VITE M20X2,5X100 U5737 8.8GE	BOLT M20X2,5X100 U5737 8.8GE	/	/	/
28	F01410125	ROS.M20 21X 37X 3 U6592 IX	WASHERS M20 21X 37X3 U6592 IX	/	/	/
29	U50180904V	K.GEOM.VARIABILE ALA 727-728	/	/	/	/
29	U50180917V	K.GEOM.VARIABILE ALA 724	/	/	/	/
29	U50181090V	K.GEOM.VARIABILE ALA 730-732	/	/	/	/

Ricambi per barre diserbanti / Spare parts for herbicide booms

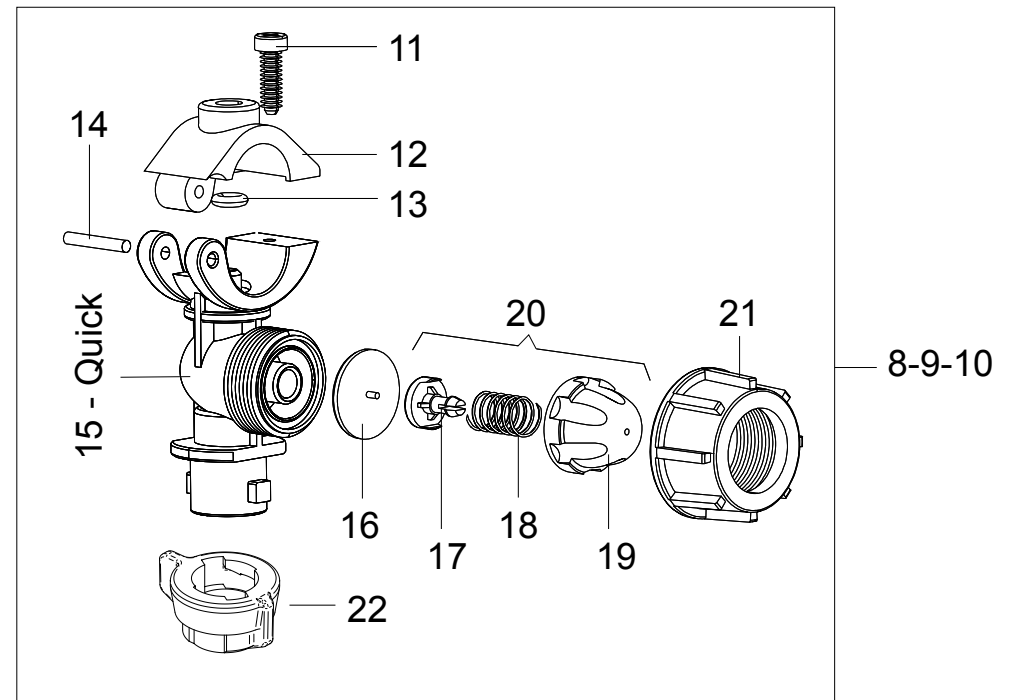
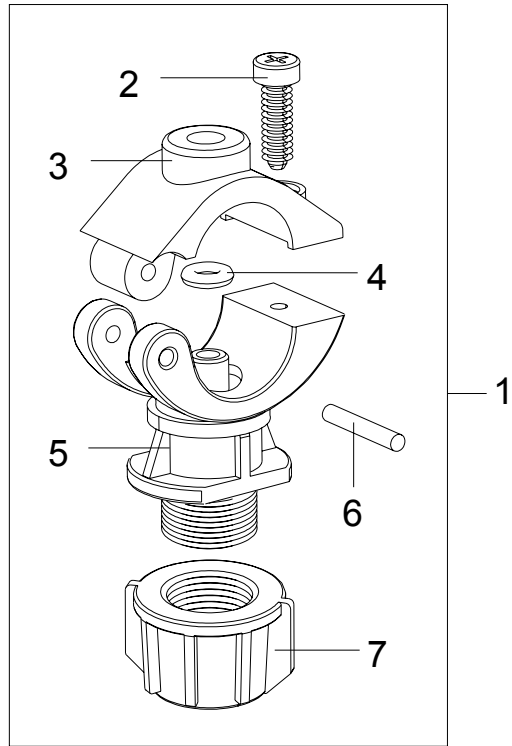
TAV. 040



Ricambi per barre diserbanti / Spare parts for herbicide booms

TAV. 040

Pos.	Cod.	Descrizione	Description	Description	Benennung	Descripion
1	U18050022	K MORSETTO CORTO FISSAGGIO ASTE Q20	KIT PLASTIC CLAMP (BOOM HOLDER	KIT ETAU COURT POUR BARRE Q20	KLEMME KIT MIT KURZ STANGE Q20	KIT PRENSION CORTO ASTA Q20
2	U18050057	K.MORSETTO 2PZ.FIX ASTE PG QUADRO25	K.MORSETTO 2PZ.FIX ASTE PG QUA	/	/	/
3	U18050024	K MORSETTO LUNGO FISSAGGIO ASTE Q30	KIT SHORT CLAMP FOR FIXING SPR	KIT ETAU LONG POUR BARRE Q30	KLEMME KIT MIT LANG STANGE Q30	KIT PRENSION LARGO ASTA Q30
4	U18050059	K MORSETTO NY FISSAGG ASTE X PIANO	K MORSETTO NY FISSAGG ASTE X P	KIT ETAU NY FISSASION BARRE	KLEMME KIT NY FIXIERUNG STANGE	KIT PRENSION NY FIJACION ASTA
5	UA7300129	&* FASCETTA ALIM.1/2"+CAV+VITI INOX	/	/	/	/
6	U28030357	K.RPGC D8 G1/2" ALETTE GU.PLT	K.RPGC \$8 G1/2" ALETTE GU.PLT	/	/	/
7	U28030389	K.RPGC D10 G1/2" ALETTE GU.PLT	K.RPGC \$10 G1/2" ALETTE GU.PLT	/	/	/
8	U28030390	K.RPGC D13 G1/2" ALETTE GU.PLT	K.RPGC \$13 G1/2" ALETTE GU.PLT	/	/	/
9	U28030494	K.RPGC D19 3/4"+RID3/4"-1/2"M-F PVC	/	/	/	/
10	U28030172	K.RPGD D8 G1/2" ALETTE OR	K.RPGD \$8 G1/2" ALETTE OR	/	/	/
11	U28030174	K.RPGD D10 G1/2" ALETTE OR	/	/	/	/
12	U28030176	K.RPGD D13 G1/2" ALETTE OR	K.RPGD \$13 G1/2" ALETTE OR	/	/	/
13	U28030495	K.RPGD D19 3/4"+RID3/4"-1/2"M-F PVC	K.RPGD \$19 3/4"+RID3/4"-1/2M-F	/	/	/
14	U32020185	KIT TAPPO G1/2 OTTONE+GUARNIZIONE	KIT TAPPO G1/2 OTTONE+GUARNIZI	/	/	/
15	U18050034	K.MORSETTO X GETTO 1/4"	KIT LONG CLAMP FOR FIXING SPRA	ETAU KIT POUR JET 1/4	KLEMME KIT FUR DUSE 1/4	KIT PRENSION PARA BOQUILLA 1/4
16	U50301017	K.PROTEZIONI STRISCIANTI X BD IDR.	K.PROT.STRISC.X BD IDR.QUAD.25	/	/	/
17	U50301024	K.PROTEZ.STRISCIANTI X ALA300-400	K.PROT.STRISC.X ALA300-400D.25	/	/	/
18	U50301025	K.PROTEZ.STRISC.ALA321-418 5-6VENTO	/	/	/	/
19	U50301027	K.PROTEZ.STRISCIANTI X BIT18-SH24	K.PROT.STRISC.X BIT18-SH24D.25	/	/	/
20	U50301023	K.PROTEZ.STRISCIANTI X ALA521-621	K.PROTEZ.STRISCIANTI X ALA521-621	KIT PROTECT.RAMPANT ALA521-621	PROTEKT. KREICHEND ALA521-621	KIT PROTEC.RASTRERO ALA521-621
22	U00160258	ASTA P.G.2F D7 I=500 INOX	NOZZLE SUPPORT ROD 3 HOLES \$7	BARRE 57 CM 2 TROU INOX	STANGE 57CM 2 LOCHEN INOX	ASTA 57 CM 2 AGUJERO INOX
23	U00160260	ASTA P.G.3F D7 I=500 INOX	NOZZLE SUPPORT ROD 3 HOLES D7	BARRE D7 3 TROU INOX	STANGE D7 3 LOCHEN INOX	ASTA D7 3 AGUJRO INOX
24	U00160262	ASTA P.G.4F D7 I=500 INOX	ASTA P.G.4F \$7 I=500 INOX	/	/	/
25	U00160264	ASTA P.G.5F D7 I=500 INOX	ASTA P.G.5F \$7 I=500 INOX	/	/	/
26	U00160284	ASTA P.G.6F D7 I=500 INOX	ASTA P.G.6F \$7 I=500 IXQUAD.25	/	/	/
27	U00160337	ASTA P.G.7F D7 I=500 INOX	ASTA P.G.7F \$7 I=500 IXQUAD.25	/	/	/
28	U00160441	ASTA P.G.2F D7 I=500 IX ALIM.INFER.	ASTA P.G.2F \$7 I=500 IX AL.INF	/	/	/
29	U00160436	ASTA P.G.3F D7 I=500 IX ALIM.INFER.	ASTA P.G.3F \$7 I=500 IX AL.INF	/	/	/
30	U00160438	ASTA P.G.4F D7 I=500 IX ALIM.INFER.	ASTA P.G.4F \$7 I=500 IX AL.INF	/	/	/
31	U00160432	ASTA P.G.5F D7 I=500 IX ALIM.INFER.	ASTA P.G.5F \$7 I=500 IX AL.INF	/	/	/
32	U00160439	ASTA P.G.6F D7 I=500 IX ALIM.INFER.	ASTA P.G.6F \$7 I=500 IX AL.INF	/	/	/
33	U00160440	ASTA P.G.7F D7 I=500 IX ALIM.INFER.	ASTA P.G.7F \$7 I=500 IX AL.INF	/	/	/
34	U00160222	ASTA P.G.2F D7 I=350 INOX	ASTA P.G.2F \$7 I=350 IX	/	/	/
35	U00160236	ASTA P.G.3F D7 I=350 INOX	ASTA P.G.3F \$7 I=350 INOX	/	/	/
36	U00160230	ASTA P.G.4F D7 I=350 INOX	AUCT.P.G.4F \$7 I=350 INOX	/	/	/
37	U00160224	ASTA P.G.5F D7 I=350 INOX	ASTA P.G.5F \$7 I=350 INOX	/	/	/
38	U00160218	ASTA P.G.6F D7 I=350 INOX	ASTA P.G.6F \$7 I=350 IX	/	/	/
39	U00160232	ASTA P.G.7F D7 I=350 INOX	ASTA P.G.7F \$7 I=350 IX	/	/	/
40	U00160397	ASTA P.G.2F D10 I=500 INOX	/	/	/	/
41	U00160398	ASTA P.G.3F D10 I=500 INOX	/	/	/	/
42	U00160395	ASTA P.G.4F D10 I=500 INOX	/	/	/	/
43	U00160396	ASTA P.G.5F D10 I=500 INOX	/	/	/	/
44	U00160399	ASTA P.G.6F D10 I=500 INOX	/	/	/	/
45	U00160401	ASTA P.G.7F D10 I=500 INOX	ASTA P.G.7F \$10 I=500 INOX	/	/	/
46	F01020420	VITE M6X1X20 U5739 A2IX	SCR. M6X1X20 U5739 A2IX	VIS M6 X1 X 20 U5739 8.8 IX	SCHRAUBE M6X1X20 U5739 A2 IX	TORNIL. M6 X1 X 20 U5739 8.8
47	F01420038	ROS.M6 6,4X18X1,5 U6593 IX	WASHER M6 6,4X18X1,5 U6593 IX	RONDELLE M6 6,4X18X1,5U6593 IX	SCHEIBE M6 6,4X18X1,5 U6593 IX	ARANDELA M6 6,4X18X1,5 6593IX
48	F01230024	DADO M6X1 D982 A2IX	NUT M6X1 D982 A2IX	ECROU AUTOB.NOR.10	SELBSTSP. MUTTER NOR. 10	TUERCAAUTOB. NOR. 10
49	F02300066	FASCETTA INOX W4 20X32 BANDA12	INOX CLAMP W4 20X32 WIDE 12 GS	/	/	/
50	F03010373	ANEL. OR 13,10X2,62 NBR	O.R.GASKET 13,10X2,62 NBR	JOINT 13,10X2,62 NBR	DICHTUNG 13,10X2,62 NBR	JUNTA 13,10X2,62 NBR
51	F12016002	RID MF G3/4 G1/2	REDUCTION M/F G3/4 G1/2	REDUCTION M/F G3/4 G1/2	REDUZIERSSTUCK M/F G3/4 G1/2	RIDUCCION MAC/HEMB. G3/4 G1/2
52	F12026004	GIRELLO G3/4	FLY-NUT G3/4	ECROU G3/4	UBERWURFMUTTER G3/4	TUERCA G3/4
53	U28010012	RPGC \$19 X GIRELLO 3/4"	/	/	/	/
54	U28000125	RPGD \$19 X GIR.3/4"	STRAIG.HOSE FIT.D19 FLYNUT 3/4	/	/	/
55	U32020236	KIT TAPPO G1/2 PLAST.+ GUAR	/	/	/	/
56	U32040062	TUBO AIR \$30 (GUAINA DI PROT.)	/	/	/	/
57	F12130008	TUBO ACQUA PRESS. D 19 20BAR	WATER PIPE D19	TUBE DE PRESSION AGUA D19	WASSER PRESSURE GURRTE D19	TUBO PARA PRESSION DE AGUA D19
58	U10030100	FASCETTAALIMENT.1/2"+CAV+VIT *	CLAMP 1/2"+ JUMPER + INOX SCRE	GAINÉ 1/2" CABLE+VIS	KLEMME ALIM.1/2"KABEL+SCHRAUBE	BRAZADERA ALIMEN.1/2"+CAV+TORN
60	F02300063	FASCETTA INOX W4 25X40 BANDA12	INOX CLAMP W4 25X40 WIDE 12	/	/	/
61	U28000133	RACC.PGM 19MM DPR.RPV-RPN VERS	/	/	/	/

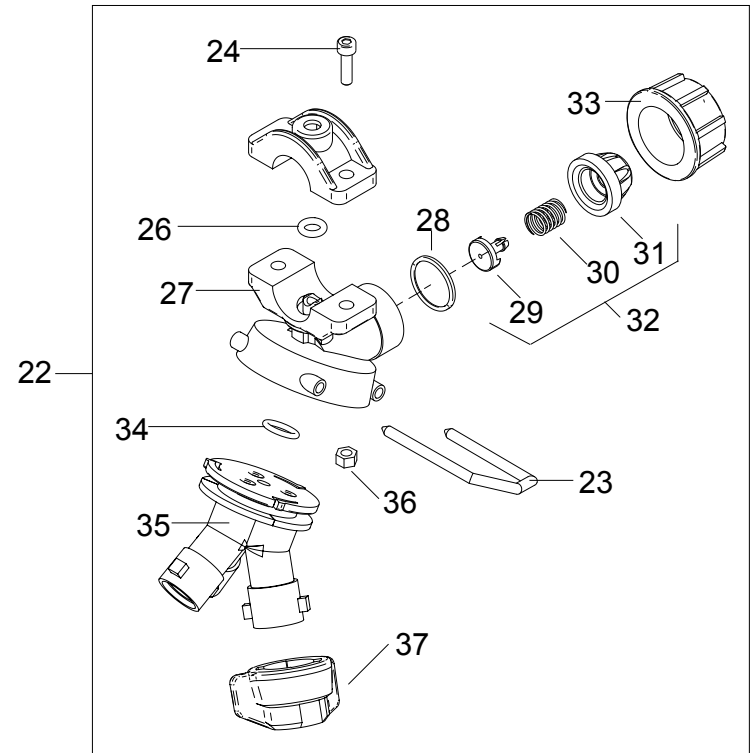
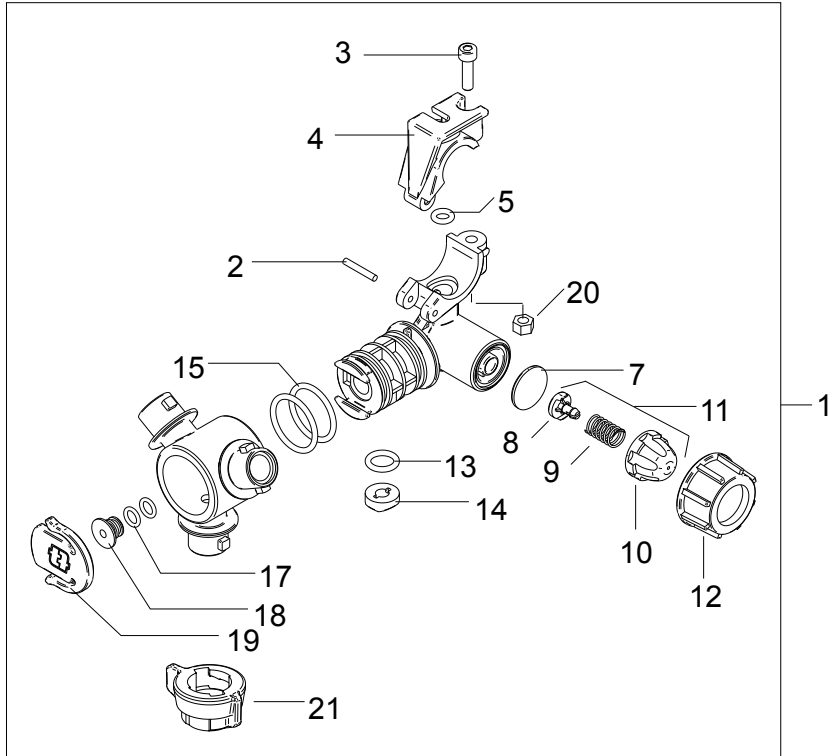


Getti standard ed Unijet 2000 / Standard and Unijet Nozzle Tip

TAV. 050

Pos.	Cod.	Descrizione	Description	Description	Benennung	Descripcion
1	U12240204	GETTO DISERBO "STANDARD" COMPLETO	DISERB.JET"STD"PVC 1/2" F7 TEC	/	/	/
2	F01070311	VIT.A.4,8X1,6 X 16 9707 IX	/	/	/	/
3	UA7000116	CAVALLOTTO SNODATO PER PGT D.1/2"	CAVAL.SNODATO X PGT D.1/2"	/	/	/
4	UA7000193	GUARN.O-RING 6X2,5 EPDM	O.RING GASKET 6X2,5 EPDM	/	/	/
5	UA7000061	CORPO PGT S/A D.1/2"-D.7 FIL.G3/8"	PGT BODY S/A D.1/2"-D.7 FIL.G	/	/	/
6	UA7000419	SPINA D 3X19,8	SPINA D 3X19,8	/	/	/
7	U12000052	GALLETTO 3/8" GETTO STANDARD ROSSO	FLY NUT 3/8" FOR RED STN JET	/	/	/
8	U12240206	UNIJET FILETTO COMPLETO	ORIENTABLE DOUBLE JET KIT FOR	JET COMPLETE FILETTEE	EINGEFALDET VOLL DUSE	UNIJET FILETE COMPLETO
9	U12240208	UNIJET QUICK COMPLETO+GALL.S.SYSTEM	COMPLETE QUICK-UNIJET	/	/	/
10	U12240209	UNIJET QUICK COMPLETO+GALL.X CONO	COMPLETE THREAD UNIJET	UNIJET COMPLETE + FLOTTANT	VOLL QUICK-DUSE + SCHWIMMER	CHORRO COMPLETO + FLOTADOR
11	F01070311	VIT.A.4,8X1,6 X 16 9707 IX	/	/	/	/
12	UA7000116	CAVALLOTTO SNODATO PER PGT D.1/2"	CAVAL.SNODATO X PGT D.1/2"	/	/	/
13	UA7000193	GUARN.O-RING 6X2,5 EPDM	O.RING GASKET 6X2,5 EPDM	/	/	/
14	UA7000419	SPINA D 3X19,8	SPINA D 3X19,8	/	/	/
15	UA7000062	CORPO PGT C/A D.1/2"-D.7 FIL.G3/8"	/	/	/	/
15	UA7000063	CORPO PGT C/A D.1/2"-D.7 ATT.RAP	CORPO PGT C/A D.1/2"-D.7 ATT.R	/	/	/
16	UA7000356	MEMBRANA ANTIGOCCI IN EPDM	MEMBRANA ANTIGOCCI IN EPDM	/	/	/
16	UA7000717	MEMBRANA ANTIGOCCIA IN VITON	/	/	/	/
17	UA7000427	SPINTORE VALVOLA ANTIG A MEMBRANA	SPINTORE VALV.ANTIG A MEMB.	/	/	/
18	UA7000364	MOLLA INOX ANTIG.MEMBR./,5BAR	MOLLA IX ANTIG.MEMBR./,5BAR	/	/	/
18	UA7000364	MOLLA INOX ANTIG.MEMBR./,5BAR	MOLLA IX ANTIG.MEMBR./,5BAR	/	/	/
19	UA7000117	CAPSULA ANTIGOCCIA DISERBO ROSSA	CAPSULA ANTIGOCCIA DISER.RED	/	/	/
19	UA7000118	CAPSULA ANTIGOCCIA DISERBO NERA	CAPSULA ANTIGOCCIA DISER.NERA	/	/	/
20	UA7000271	KIT CAPSULA ANTIG.DIS.ROSSA/,5 BAR	KIT CAPSULA ANTIG.DIS.	/	/	/
20	UA7000272	KIT CAPSULA ANTIG.DIS.GIALLA/,2BAR	/	/	/	/
21	UA7000502	GIRELLO G 3/4 V	/	/	/	/
22	U12000052	GALLETTO 3/8" GETTO STANDARD ROSSO	FLY NUT 3/8" FOR RED STN JET	/	/	/
22	U12000092	GALLETTO QUICK+GU.X S.SYST ROSSO	UNI-CAP+ O.R. X S.SYST RED	/	/	/
22	U12000090	GALL QUICK+GUAR.X CONO ISO ROSSO	GALL QUICK+GU.X CONO ISO ROSSO	/	/	/
22	U12000093	GALLETTO QUICK+GUARN.X CONO ATR	/	/	/	/

TREEJET "L"



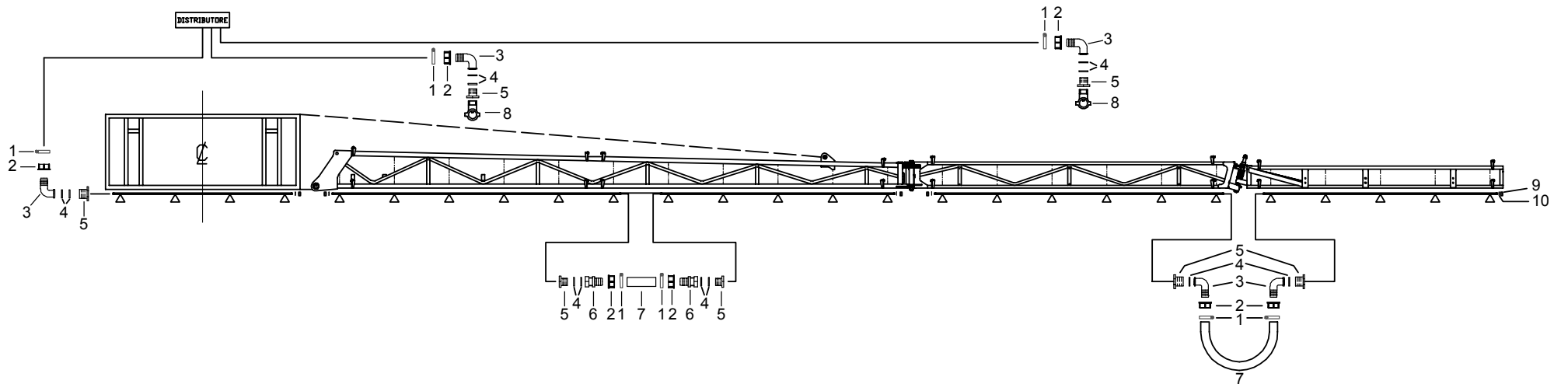
TREEJET "401"

Getti Treejet "L" & "401" / Treejet "L" & "401"

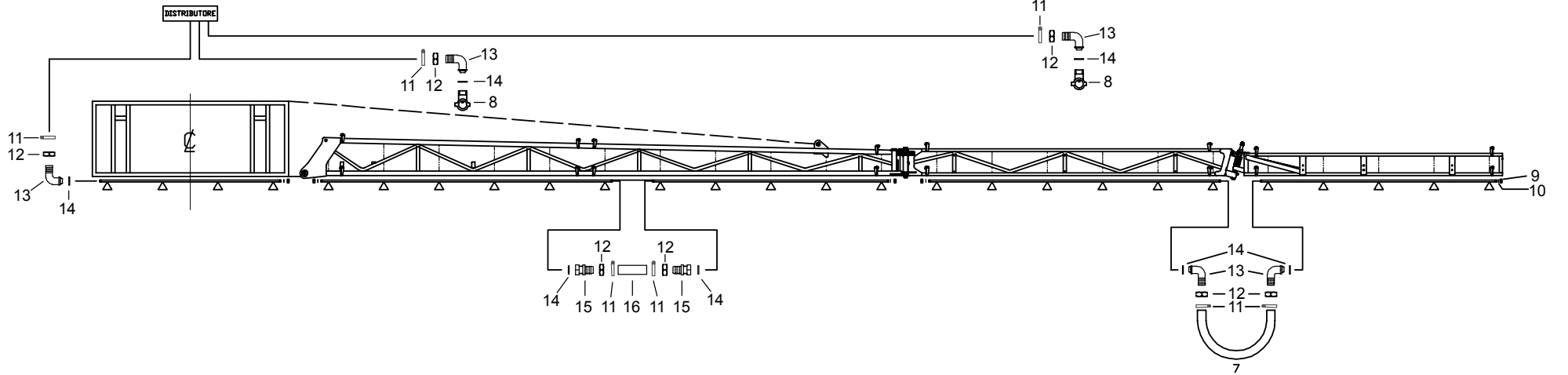
TAV. 060

Pos.	Cod.	Descrizione	Description	Description	Benennung	Descripcion
1	U12240250	TREEJET QUICK LATER.COMPLETO GHIERE	COMPLETE QUICK UNIJET + LOCK R	/	/	/
2	UA7000419	SPINA D 3X19,8	SPINA D 3X19,8	/	/	/
3	F01040223	VIT.M 5X /,8X 20 U5931 A2 IX	/	/	/	/
4	UA7000116	CAVALLOTTO SNODATO PER PGT D.1/2"	CAVAL.SNODATO X PGT D.1/2"	/	/	/
5	UA7000193	GUARN.O-RING 6X2,5 EPDM	O.RING GASKET 6X2,5 EPDM	/	/	/
7	UA7000356	MEMBRANA ANTIGOCCHI IN EPDM	MEMBRANA ANTIGOCCHI IN EPDM	/	/	/
7	UA7000717	MEMBRANA ANTIGOCCIA IN VITON	/	/	/	/
8	UA7000427	SPINTORE VALVOLA ANTIG A MEMBRANA	SPINTORE VALV.ANTIG A MEMB.	/	/	/
9	UA7000364	MOLLA INOX ANTIG.MEMBR. /,5BAR	MOLLA IX ANTIG.MEMBR./,5BAR	/	/	/
9	UA7000364	MOLLA INOX ANTIG.MEMBR. /,5BAR	MOLLA IX ANTIG.MEMBR./,5BAR	/	/	/
10	UA7000118	CAPSULA ANTIGOCCIA DISERBO NERA	CAPSULA ANTIGOCCIA DISER.NERA	/	/	/
11	UA7000271	KIT CAPSULA ANTIG.DIS.ROSSA /,5 BAR	KIT CAPSULA ANTIG.DIS.	/	/	/
11	UA7000272	KIT CAPSULA ANTIG.DIS.GIALLA /,2BAR	/	/	/	/
12	UA7000502	GIRELLO G 3/4 V	/	/	/	/
13	UA7000241	O-RING 3043 2.62X10,78 EPDM	O-RING 3043 2.62X10,78 EPDM	/	/	/
14	UA7000187	GUARNIZIONE SAG. D16 X R15 NF STD	GU.SAG.D16 X R15 NF STD	/	/	/
15	UA7000200	GUARN.O-RING 3100 2.62X25.07 EPDM	GUOR 3100 2.62X25.07 EPDM	/	/	/
17	UA7000249	GUARN.O-RING 106 1.78X6.75 EPDM	GUOR 106 1.78X6.75 EPDM	/	/	/
18	UA7000453	TAPPO PER PORTAGETTO MULTICAP	TAPPO X PORTAGET.MULTICAP	/	/	/
19	UA7000155	FORCELLA PER PENTAJET	FORC.X PENTAJET	/	/	/
20	U06040108	DEM M5X8X4 UNI5588 6S GEOMET	DEM M5X8X4 UNI5588 6S GEOMET	/	/	/
21	U12000092	GALLETTO QUICK+GU.X S.SYST ROSSO	UNI-CAP+ O.R. X S.SYST RED	/	/	/
21	U12000090	GALL QUICK+GUAR.X CONO ISO ROSSO	GALL QUICK+GU.X CONO ISO ROSSO	/	/	/
21	U12000093	GALLETTO QUICK+GUARN.X CONO ATR	/	/	/	/
22	U12240267	TREEJET QUICK 401 F7 COMPLETO GALL	TREEJET QUICK 401 F7	/	/	/
23	UA7000152	FORCELLA PER 3JET VERTICALE	TREEJET VERTICAL FORK	/	/	/
24	F01040223	VITE M5X0,8X20 U5931 A2 IX	SCREW M5X0,8X20 U5931 A2 IX	/	/	/
26	UA7000193	GUARN.O-RING 6X2,5 EPDM	O.RING GASKET 6X2,5 EPDM	/	/	/
27	UA7000725	CORPO SUP PGT ASSIALE 3V.D.1/2"-D.7	/	/	/	/
28	UA7000356	MEMBRANA ANTIGOCCHI IN EPDM	MEMBRANA ANTIGOCCHI IN EPDM	/	/	/
28	UA7000717	MEMBRANA ANTIGOCCIA IN VITON	/	/	/	/
29	UA7000427	SPINTORE VALVOLA ANTIG A MEMBRANA	SPINTORE VALV.ANTIG A MEMB.	/	/	/
30	UA7000364	MOLLA INOX ANTIG.MEMBR. /,5BAR	MOLLA IX ANTIG.MEMBR./,5BAR	/	/	/
30	UA7000364	MOLLA INOX ANTIG.MEMBR. /,5BAR	MOLLA IX ANTIG.MEMBR./,5BAR	/	/	/
31	UA7000117	CAPSULA ANTIGOCCIA DISERBO ROSSA	CAPSULA ANTIGOCCIA DISER.RED	/	/	/
31	UA7000118	CAPSULA ANTIGOCCIA DISERBO NERA	CAPSULA ANTIGOCCIA DISER.NERA	/	/	/
32	UA7000271	KIT CAPSULA ANTIG.DIS.ROSSA /,5 BAR	KIT CAPSULA ANTIG.DIS.	/	/	/
32	UA7000272	KIT CAPSULA ANTIG.DIS.GIALLA /,2BAR	/	/	/	/
33	UA7000502	GIRELLO G 3/4 V	/	/	/	/
34	UA7000191	GUARN.O-RING	O.RING GASKET	/	/	/
36	F01200221	DADO M5X0,8 U5588 A2 IX	NUT M5X0,8 U5588 A2 IX	/	/	/

SCHEMA ALIMENTAZIONE TUBI SPRAYERS CON ADATTATORI PLASTICA D19



SCHEMA ALIMENTAZIONE TUBI SPRAYERS CON ADATTATORI OTTONE D13

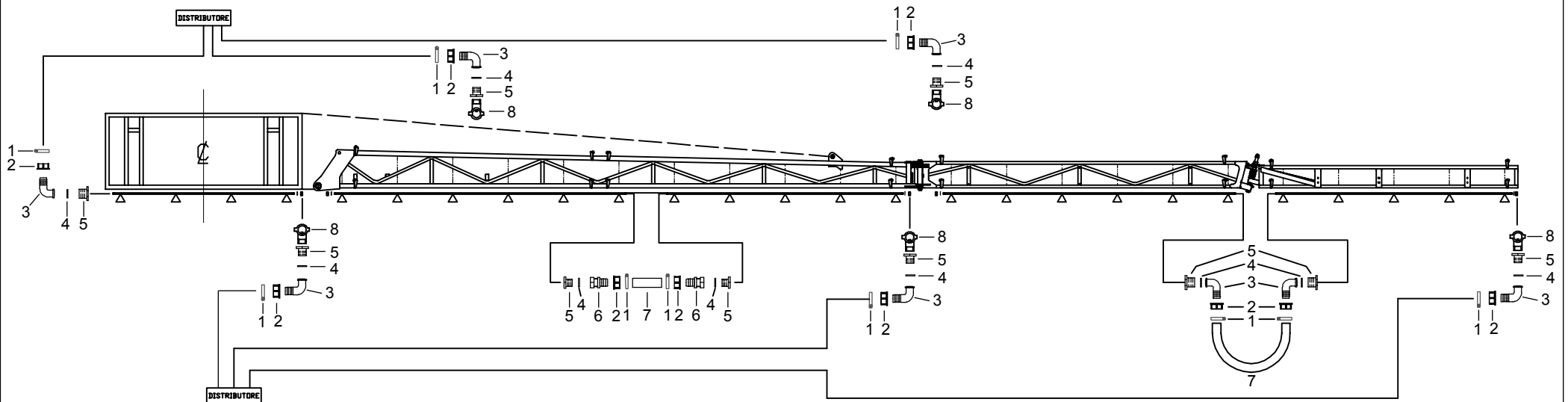


Schema alimentazione ALA / power diagram ALA

TAV. 070

Pos.	Cod.	Descrizione	Description	Description	Benennung	Descripcion
1	F02300066	FASCE.INOX W4 20X32 BANDA12 CO	INOX CLAMP W4 20X32 BANDA12 CO	/	/	/
2	F12026004	GIRELLO G3/4	FLY-NUT G3/4	ECROU G3/4	UBERWURFMUTTER G3/4	TUERCA G3/4
3	U28010012	RPGC \$19 X GIRELLO 3/4"	/	/	/	/
4	F03010373	ANEL. OR 13,10X2,62 NBR	O.R.GASKET 13,10X2,62 NBR	JOINT 13,10X2,62 NBR	DICHTUNG 13,10X2,62 NBR	JUNTA 13,10X2,62 NBR
5	U28250071	RID.3/4"-1/2" M-F PVC	/	/	/	/
6	U28000125	RPGD \$19 X GIRELLO 3/4"	RPGD \$19 X GIR.3/4"	/	/	/
7	F12130008	TUBO ACQUA PRESS. D 19 20BAR	WATER PIPE D19	TUBE DE PRESSION AGUA D19	WASSER PRESSURE GURRTE D19	TUBO PARA PRESSION DE AGUA D19
8	U10030100	FASCETTA ALIMEN.1/2"+CAV+VITI	CLAMP 1/2"+ JUMPER + INOX SCRE	GAINE 1/2" CABLE+VIS	KLEMME ALIM.1/2"KABEL+SCHRAUBE	BRAZADERA ALIMEN.1/2"+CAV+TORN
9	U32020100	TAPPO 1/2 G OTTONE	TAPPO 1/2 G OTTONE	/	/	/
10	U12090080	GUARNIZIONE NORMALE &18X2	GUARNIZIONE NORMALE &18X2	/	/	/
11	F02300064	FASCE.INOX W4 12X22 BANDA 9 CO	INOX CLAMP W4 12X22 BANDA 9 CO	/	/	/
12	U12000056	GAL G1/2 CH24 OTTONE	FLY-NUT G1/2 CH24 BRASS	/	/	/
13	U28030063	RPGMC \$13 OTTONE	RPGMC \$13 OTTONE	/	/	/
14	U12090008	GUARN.PIANA\$12,5X18,5X2 POLIET	GUARN.PIANA \$12,5X18,5X2 POLIE	/	/	/
15	U28020020	RPGMD \$13 OTTONE	RPGMD \$13 OTTONE	/	/	/
16	U32040035	TUBO PVC 13,5X21 NERO 40/120B.	PIPE PVC13,5X21 BLACK 40/120BA	/	/	/

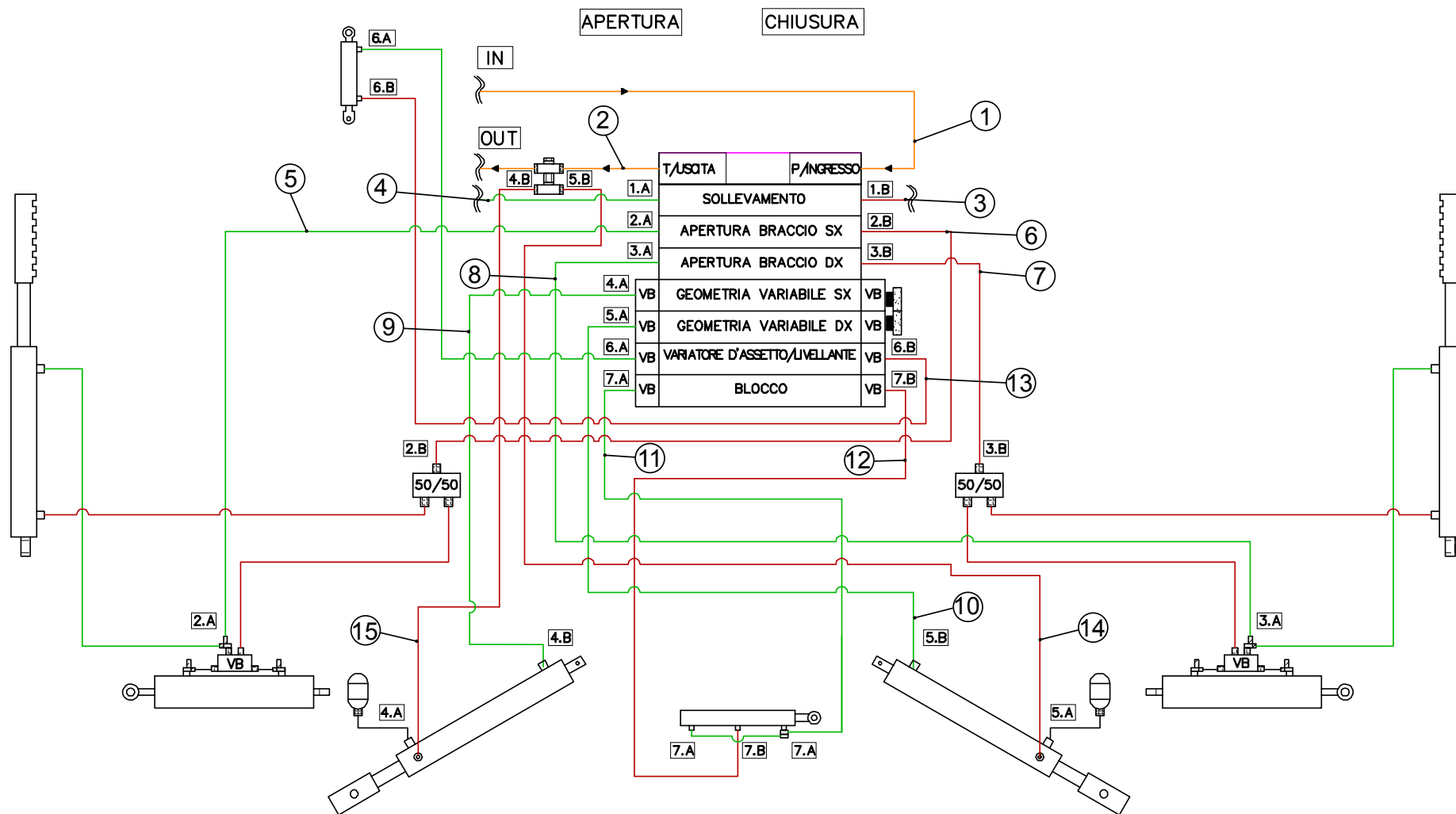
SCHEMA ALIMENTAZIONE BARRA A 5 SEZIONI TUBI SPRAYERS CON ADATTATORI PLASTICA D 19



Schema alimentazione ALA / power diagram ALA

TAV. 080

Pos.	Cod.	Descrizione	Description	Description	Benennung	Descripcion
1	F02300066	FASCE.INOX W4 20X32 BANDA12 CO	INOX CLAMP W4 20X32 BANDA12 CO	/	/	/
2	F12026004	GIRELLO G3/4	FLY-NUT G3/4	ECROU G3/4	UBERWURFMUTTER G3/4	TUERCA G3/4
3	U28010012	RPGC \$19 X GIRELLO 3/4"	/	/	/	/
4	F03010373	ANEL. OR 13,10X2,62 NBR	O.R.GASKET 13,10X2,62 NBR	JOINT 13,10X2,62 NBR	DICHTUNG 13,10X2,62 NBR	JUNTA 13,10X2,62 NBR
5	F12016002	RID MF G3/4 G1/2	RIDUCTION M/F G3/4 G1/2	REDUCTION M/F G3/4 G1/2	REDUZIERSSTUCK M/F G3/4 G1/2	RIDUCCION MAC/HEMB. G3/4 G1/2
6	U28000125	RPGD \$19 X GIR.3/4"	STRAIG.HOSE FIT.D19 FLYNUT 3/4	/	/	/
7	F12130008	TUBO ACQUA PRESS. D 19 20BAR	WATER PIPE D19	TUBE DE PRESSION AGUA D19	WASSER PRESSURE GURRTE D19	TUBO PARA PRESSION DE AGUA D19
8	U10030100	FASCETTA ALIMENT.1/2+CAV+VIT *	CLAMP 1/2"+ JUMPER + INOX SCRE	GAINÉ 1/2" CABLE+VIS	KLEMME ALIM.1/2"KABEL+SCHRAUBE	BRAZADERA ALIMEN.1/2"+CAV+TORN

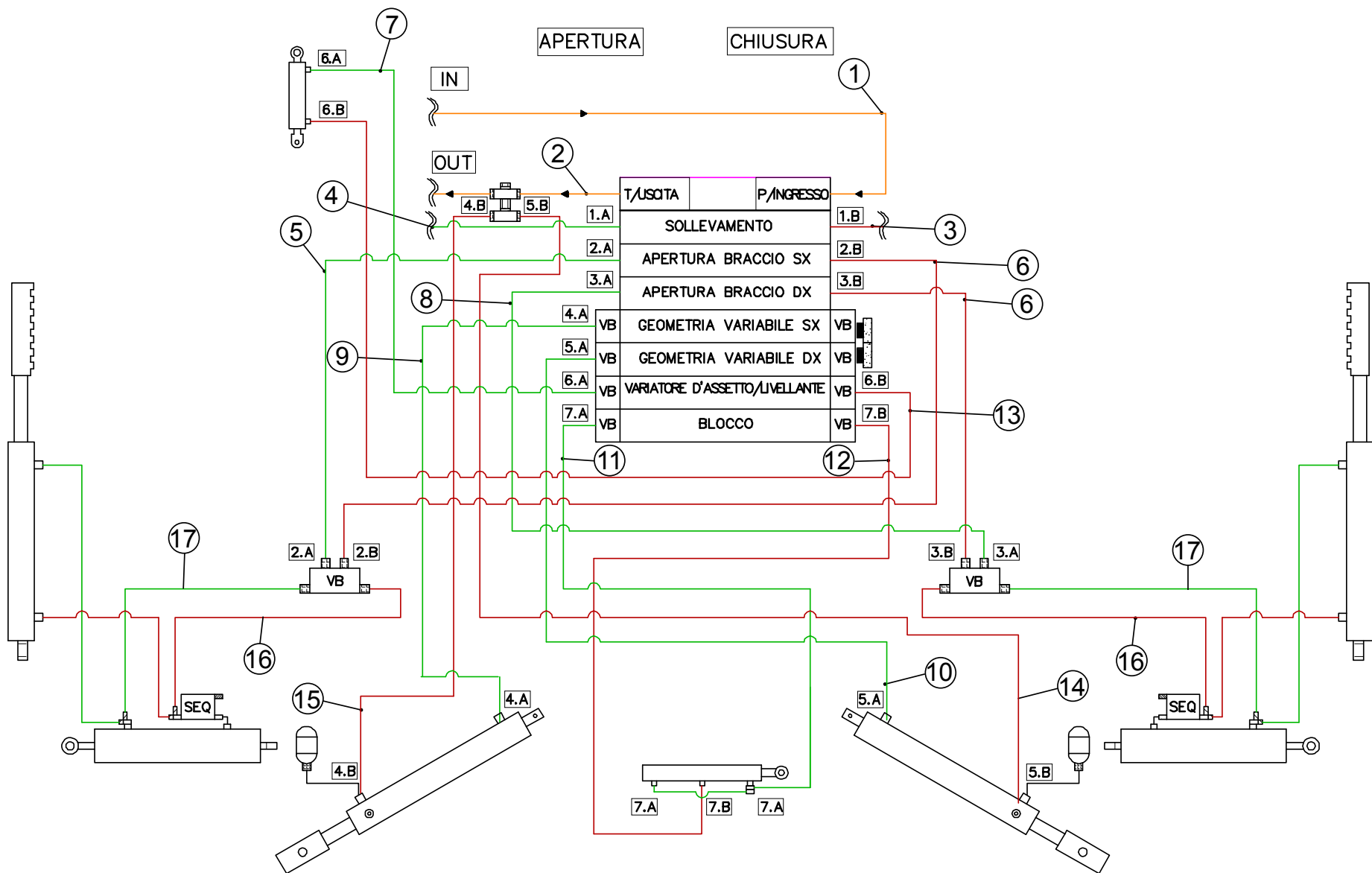


Oildrive 7 50-50 / Oildrive 7 50-50

TAV. 090

Pos.	Cod.	Descrizione	Description	Description	Benennung	Descripcion
3	U33011080	K.TUBO IDR.1/4" MT6,70 F90-F90	/	/	/	/
4	U33011275	K.TUBO IDR.1/4" MT5,75 F90°-F90°	/	/	/	/
5	U33011250	K.TUBO IDR.1/4" MT1,45 F90+F90	/	/	/	/
6	U33010663	K.TUBO IDR.1/4" MT1,80 F90°-F90°	/	/	/	/
7	U33011246	K.TUBO IDR.1/4" MT1,05 F90+F90	/	/	/	/
8	U33011250	K.TUBO IDR.1/4" MT1,45 F90+F90	/	/	/	/
9	U33011255	K.TUBO IDR.1/4" MT2,10 F90+F90	/	/	/	/
10	U33010665	K.TUBO IDR.1/4" MT3,10 F90°-F90°	/	/	/	/
11	U33010984	K.TUBO IDR.1/4" MT2,00 F90°-F	/	/	/	/
12	U33010963	K.TUBO IDR.1/4" MT2,55 F+F90°	/	/	/	/
13	U33010974	K.TUBO IDR.1/4" MT0,75 F90°+F90°	/	/	/	/
14	U33010985	K.TUBO IDR.1/4" MT3,50 F-F90°	/	/	/	/
15						

Oildrive 7 seq. / Oildrive 7 seq.



Oildrive 7 seq. / Oildrive 7 seq.

TAV. 100

Pos.	Cod.	Descrizione	Description	Description	Benennung	Descripcion
1	F03070259	TG 3/82SN FD3/8 F903/8 7500 (C45 AS)	/	/	/	/
1	F03050936	TG 3/8 2SN F3/8 F3/8 12000 (C65)	/	/	/	/
2	U33011274	K.TUBO IDR.3/8" MT5,/ FD-FD	/	/	/	/
3	U33010915	K.TUBO IDR.1/4" MT2,45 F+F90°	/	/	/	/
4	U33011275	K.TUBO IDR.1/4" MT5,75 F90°-F90°	/	/	/	/
5	U33011246	K.TUBO IDR.1/4" MT1,05 F90+F90	/	/	/	/
6	U33011250	K.TUBO IDR.1/4" MT1,45 F90+F90	/	/	/	/
7	U33010974	K.TUBO IDR.1/4" MT0,75 F90°+F90°	/	/	/	/
8	U33011255	K.TUBO IDR.1/4" MT2,10 F90+F90	/	/	/	/
9	U33010984	K.TUBO IDR.1/4" MT2,00 F90°-F	/	/	/	/
10	U33010985	K.TUBO IDR.1/4" MT3,50 F-F90°	/	/	/	/
11	U33010915	K.TUBO IDR.1/4" MT2,45 F+F90°	/	/	/	/
12	U33010963	K.TUBO IDR.1/4" MT2,55 F+F90°	/	/	/	/
13	U33010899	K.TUBO IDR.1/4" MT0,60 F90-F90	/	/	/	/
14	U33010665	K.TUBO IDR.1/4" MT3,10 F90°-F90°	/	/	/	/
15	U33010663	K.TUBO IDR.1/4" MT1,80 F90-F90	/	/	/	/
16	U33010968	K.TUBO IDR.1/4" MT0,70 F90-F90	/	/	/	/
17	U33010933	K.TUBO IDR.1/4" MT0,85 F-F90°	/	/	/	/

**USATE SEMPRE RICAMBI ORIGINALI
 ALWAYS USE ORIGINAL SPARE PARTS
 IMMER DIE ORIGINAL-ERSATZTEILE VERWENDEN
 EMPLOYEZ TOUJOURS LES PIECES DE RECHANGE ORIGINALES
 UTILIZAR SIEMPRE REPUESTOS ORIGINALES**



GASPARDO UNIGREEN

Servizio Assistenza Tecnica - After Sales Service

+39 0421 774956

Servizio Ricambi - Spare Parts Service

+39 0421 762895



GASPARDO UNIGREEN

MASCHIO GASPARDO SpA
Registered Office and Production Plant
 Via Marcello, 73 - 35011
 Campodarsego (Padova) - Italy
 Tel. +39 049 9289810
 Fax +39 049 9289900
 info@maschio.com
 www.maschionet.com

MASCHIO GASPARDO UNIGREEN SpA
Production Plant
 Viale Pordenone, C3 - 30026
 Portogruaro (VE) - Italy
 Tel. +39 0421 762811
 Fax +39 0421 762825
 info@unigreen-spa.com

MASCHIO GASPARDO UNIGREEN SpA
Production Plant
 Via G. Rinaldi, 105 - 42124
 Reggio Emilia (RE) - Italy
 Tel. +39 0522369811
 Fax +39 0522369898
 info@unigreen-spa.com

MASCHIO FRANCE Sarl
 1 rue Denis Papin ZA
 F - 45240 La Ferte St. Aubin
 France
 Tel. +33 (0) 2.38.64.12.12
 Fax +33 (0) 2.38.64.66.79
 info@maschio.fr

000 МАСКІО-ГАСПАРДО РУССІЯ
 Улица Пушкина, 117 Б
 404126 Волжский
 Волгоградская область
 Тел. +7 (8443) 203100
 факс. +7 (8443) 203101
 info@maschio.ru

MASCHIO GASPARDO SpA
Production Plant
 Via Mussons, 7 - 33075
 Morsano al Tagliamento (PN) - Italy
 Tel. +39 0434 695410
 Fax +39 0434 695425
 info@gaspardo.com

MASCHIO DEUTSCHLAND GMBH
 Äußere Nürnberger Straße 5
 D - 91177 Thalmässing - Deutschland
 Tel. +49 (0) 9173 79000
 Fax +49 (0) 9173 790079
 dialog@maschio.de
 www.maschionet.de

MASCHIO-GASPARDO USA Inc
 120 North Scott Park Road
 Eldridge, IA 52748 - USA
 Ph. +1 563 2859937
 Fax +1 563 2859938
 info@maschio.us

MASCHIO-GASPARDO ROMANIA S.R.L.
Strada Înfrâții, F.N.
 315100 Chisineu-Cris (Arad) -România
 Tel. +40 257 307030
 Fax +40 257 307040
 info@maschio.ro

MASCHIO IBERICA S.L.
MASCHIO-GASPARDO POLAND
MASCHIO-GASPARDO UCRAINA
GASPARDO-MASCHIO TURCHIA
MASCHIO-GASPARDO CINA
MASCHIO-GASPARDO INDIA
MASCHIO-GASPARDO KOREA