

# **GASPARDO**

**MASCHIO GASPARDO S.p.A.**



# **WORK 12-15X**

**Cod: F07015241 2016-01**

- \*) Valido per Paesi UE
- \*) Valid for EU member countries
- \*) Valable dans les Pays UE
- \*) Gilt für EU-Mitgliedsländer
- \*) Válido para Países UE

- IT** PARTI DI RICAMBIO
- EN** SPARE PARTS
- DE** ERSATZTEILE
- FR** PIÈCES DÉTACHÉES
- ES** PIEZAS DE REPUESTO

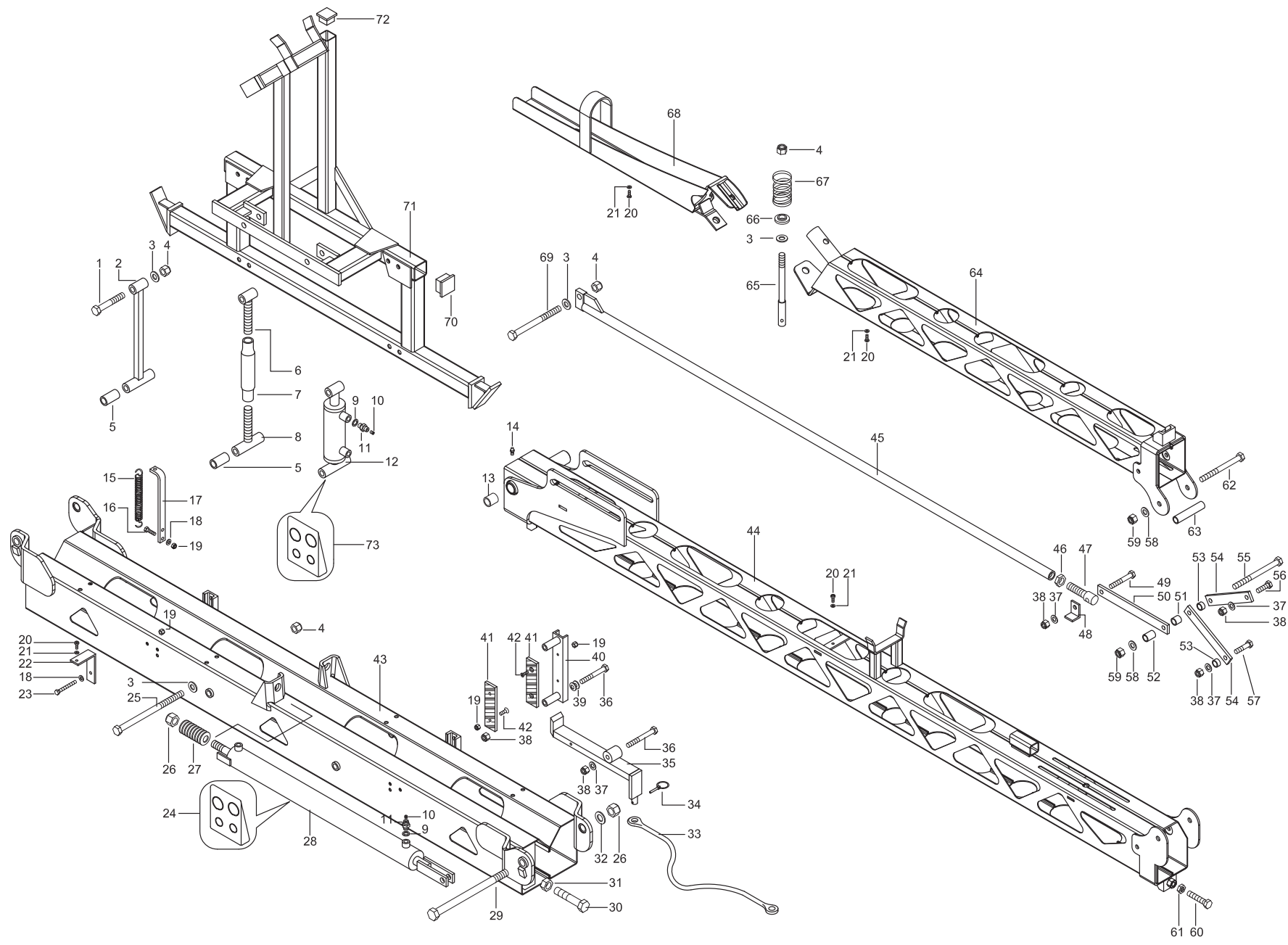
ITALIANO PARTI DI RICAMBIO	ENGLISH SPARE PARTS	DEUTSCH ERSATZTEILE	FRANÇAIS PIECES DÉTACHÉES	ESPAÑOL RESPUESTOS
<p>Le ordinazioni delle parti di ricambio vanno fatte presso i nostri concessionari di zona e devono essere sempre corredate dalle seguenti indicazioni:</p> <ul style="list-style-type: none"> <li>- <b>Tipo, modello e numero di matricola dell'attrezzatura.</b> Tali dati sono stampigliati nell'apposita targhetta di cui è dotata ogni attrezzatura.</li> <li>- <b>Numero di codice della parte richiesta</b> rilevabile dal catalogo ricambi.</li> <li>- <b>Descrizione del particolare e quantità richiesta.</b></li> <li>- <b>Numero della tavola.</b></li> <li>- <b>Mezzo di trasporto.</b> Nel caso questa voce non sia specificata, la Ditta Costruttrice, pur dedicando a questo servizio una particolare cura, non risponde di eventuali ritardi di spedizione dovuti a cause di forza maggiore. Le spese di trasporto si intendono sempre a carico del destinatario. La merce viaggia a rischio e pericolo del committente anche se venduta franco destino.</li> </ul> <p><b>NOTA:</b> Il termine <b>(Dx) Destro</b> o <b>(Sx) Sinistro</b> della macchina o di parti di essa, è inteso guardando la macchina dalla parte posteriore. Le eccezioni saranno indicate.</p>	<p><i>Orders must be transmitted through our area dealers and should always include the following indications:</i></p> <ul style="list-style-type: none"> <li>- <b>Type, model and serial number of the machine.</b> <i>These data are punched on the data plate with which every implement is equipped.</i></li> <li>- <b>Code number of the required spare part.</b> <i>This will be found in the spare parts catalogue.</i></li> <li>- <b>Description of the part and required quantity.</b></li> <li>- <b>Table number.</b></li> <li>- <b>Means of dispatch.</b> <i>If this item is not indicated, the Manufacturer, while dedicating particular care to this service, shall not be held responsible for delays in delivery caused by cases of force majeure. Transport expenses shall always be at the consignee's charge. The goods travel at the purchaser's risk and peril even when sold ex destination.</i></li> </ul> <p><b>NOTE:</b> <i>The symbols (Dx) right and (Sx) left, concerning the machine or single parts of it, are referred, as in the figure, to a rear view of them. Exceptions will be indicated.</i></p>	<p>Die Bestellungen müssen bei unseren Gebietshändler abgegeben werden. Bei der Bestellung sind stets die folgenden Angaben zu machen:</p> <ul style="list-style-type: none"> <li>- <b>Typ, Modell und Serien-Nummer des Geräts.</b> Diese Daten stehen auf dem Typenschild, mit dem jedes Gerät versehen ist.</li> <li>- <b>Artikel Nr. der erforderlichen Ersatzteile.</b> Diese stehen im Ersatzteil-Katalog.</li> <li>- <b>Beschreibung des Ersatzteils und die erforderliche Stückzahl.</b></li> <li>- <b>Tafelnummer.</b></li> <li>- <b>Versandmittel.</b> Wenn dieser Punkt nicht spezifiziert wird, haftet die Herstellerfirma nicht für etwaigen Lieferverzug aufgrund höherer Gewalt, auch wenn er diesen Service besonders aufmerksam abwickelt. Die Frachtkosten gehen dagegen immer zu Lasten des Empfängers. Die Ware reist auf Gefahr und Risiko des Auftraggebers, auch wenn frei Haus Verkauft vereinbart worden ist.</li> </ul> <p><b>N.B.:</b> Die Merkzeichen <b>(Dx) rechts</b> und <b>(Sx) links</b> betreffen eine rückwärtige Aussicht der Maschine oder Teile von ihr (siehe Bild). Ausnahmen werden gezeigt.</p>	<p><i>Les ordres doivent être effectués auprès de nos concessionaires de zone en précisant les indications suivantes:</i></p> <ul style="list-style-type: none"> <li>- <b>Type, modèle et numéro de série de la machine.</b> <i>Ces données sont gravées sur la plaque d'identification de chaque outil.</i></li> <li>- <b>Numéro de code de la pièce détachée</b> <i>indiqué sur le catalogue des pièces détachées.</i></li> <li>- <b>Description de la pièce et quantité requise.</b></li> <li>- <b>Numéro de plan.</b></li> <li>- <b>Moyen d'expédition.</b> <i>Si cette rubrique n'est pas indiquée, le Constructeur, bien que soucieux de ce service, ne répond pas des retards d'expédition pour des causes de force majeure. Les frais de transport sont toujours à la charge du destinataire. La marchandise voyage aux risques et périls de l'acheteur même si vendue franco de port.</i></li> </ul> <p><b>N.B.:</b> <i>Les références (Dx) droit et (Sx) gauche de la machine ou des parties de la même, est entendue, comme de la figure, en regardant la machine de derrière dans le sens de marche.</i></p>	<p>Los pedidos han de efectuarse en nuestros consesionarios de zona y deben incluir siempre las siguientes indicaciones:</p> <ul style="list-style-type: none"> <li>- <b>Tipo, modelo y número de matricula del equipo.</b> Dichos datos están impresos en la relativa placa presente en el equipo.</li> <li>- <b>Número de código de la parte requerida</b> presente en el catálogo respuestos.</li> <li>- <b>Descripción de la pieza y cantidad requerida.</b></li> <li>- <b>Numero de ilustración.</b></li> <li>- <b>Medio de transporte.</b> En caso que este ítem no esté especificado, el Fabricante, aún prestando la debidas consideraciones para este aspecto, no responde por eventuales retardos de env'o debidos a causas de fuerza mayor. Los gastos de transporte se consideran siempre a cargo del destinatario. La mercadería viaja bajo riesgo y peligro del comprador, incluso cuando se vende franco destino.</li> </ul> <p><b>N.B.:</b> La referencia <b>(Dx) derecha</b> o <b>(Sx) izquierda</b> de la máquina o de sus componentes, se entiende, como en la figura, mirando la máquina por la parte trasera. Se indicarán las excepciones.</p>

---

CENTRALE + BRACCI WORK 12X / CENTRAL + BOOMS WORK 12X .....	4
CENTRALE + BRACCI WORK 12X / CENTRAL + BOOMS WORK 12X .....	5
CENTRALE + BRACCI WORK 12X / CENTRAL + BOOMS WORK 12X .....	6
CENTRALE + BRACCI WORK 12X / CENTRAL + BOOMS WORK 12X .....	7
CENTRALE + BRACCI WORK 15X / CENTRAL + BOOMS WORK 15X .....	8
CENTRALE + BRACCI WORK 15X / CENTRAL + BOOMS WORK 15X .....	9
CENTRALE + BRACCI WORK 15X / CENTRAL + BOOMS WORK 15X .....	10
CENTRALE + BRACCI WORK 15X / CENTRAL + BOOMS WORK 15X .....	11
KIT INDICATORE VARIATORE ASSETTO / KIT INDICATOR VARIABLE TRIM .....	12
KIT INDICATORE VARIATORE ASSETTO / KIT INDICATOR VARIABLE TRIM .....	13
RICAMBI ACQUA WORK 12-15X .....	14
RICAMBI ACQUA WORK 12-15X .....	15
TREEJET QUICK 401 F7 .....	16
TREEJET QUICK 401 F7 .....	17
COLLEGAMENTI OLEODINAMICI BARRA / BOOM CONNECTION SCHEME .....	18
COLLEGAMENTI OLEODINAMICI BARRA / BOOM CONNECTION SCHEME .....	19

Centrale + bracci Work 12X / Central + booms Work 12X

TAV. 010



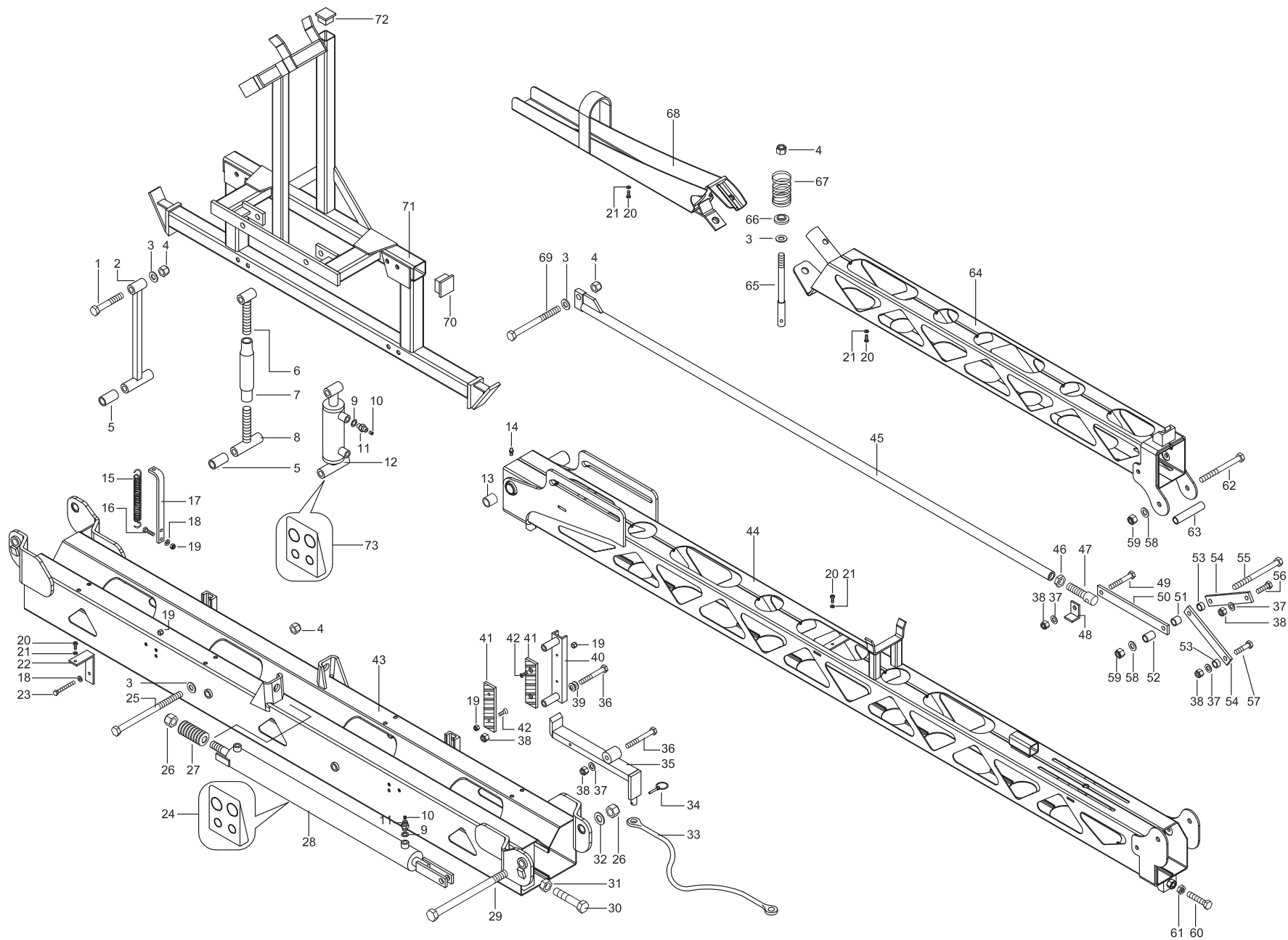
**Centrale + bracci Work 12X / Central + booms Work 12X**

TAV. 010

Pos.	Cod.	Descrizione	Description	Description	Benennung	Descrpcion
1	F01020302	VITE M16X2X90 U5737 8.8GE	BOLT M16X2X90 U5737 8.8GE	/	/	/
2	UA6900122	BIELLA FISSARVIZIO	BIELLA FISSARVIZIO	/	/	/
3	UA6900453	RONDELLA PIANA \$16	FLAT WASHER D.16	/	/	/
4	UA6900452	AUTOBLOCCANTE BASSO M16	AUTOBLOCCANTE BASSO M16	/	/	/
5	UA6900569	DISTANZIALE Ø26,9X50	DISTANCE D.26,9X50	/	/	/
6	UA6900130	TENDITORE DX WORK	TENDITORE DX WORK	/	/	/
7	UA6900570	MANICOTTO L=200	SLEEVE L=200	/	/	/
8	UA6900131	TENDITORE SINISTRO WORK	LEFT STRECHER WORK	/	/	/
9	UA6900356	RONDELLA BONDED 1/4"	WASHER BONDED 1/4"	/	/	/
10	U36000059	STROZZATORE M8 FORO /,8	STROZZATORE M8 FORO /,8	/	/	/
11	UA6900225	NIPPLO 1/4"-1/4"-FOR.INT.M8	NIPPLO 1/4"-1/4"-FOR.INT.M8	/	/	/
12	U04410129	PIST.VAR.ASS.WORK12-14-15-12L	PIST.DRIV.ALIG.WORK12-14-15-12	/	/	/
13	UA6900230	BOCCOLA SINTERIZZATA 20.28.30	/	/	/	/
14	U14120002	INGRASSATORE M8X1.25 UNI7663-A	GREASENIPPLE M8X1.25 UNI7663-A	/	/	/
15	UA6900326	MOLLA CATENACCIO BD WORK	SPRING BOLT BD WORK	/	/	/
16	UA6900473	TE FE 8X30 TF	TE FE 8X30 TF	/	/	/
17	UA6900129	PIATTO TENDIMOLLA WORK	STRETCHER SPRING PLATE WORK	/	/	/
18	F01410050	ROS.M8 8,4X 17X1,6 U6592 IX	WASHER M8 8,4X 17X1,6 U6592 IX	RONDELLE M8 8,4X 17X1,6 IX	SCHEIBE M8 8,4X 17X1,6 IX	ARANDELA M8 8,4X 17X1,6 IX
19	F01230032	DADO M8X1,25 D982 A2IX	NUT M8X1,25 D982 A2IX	ECROU M 8X1,25 D982 A2 IX	MUTTER M 8X1,25 D982 A2 IX	TUERCA M 8X1,25 D982 A2 IX
20	U36090034	VTCEI M6X18 UNI5931 8.8	VTCEI M6X18 UNI5931 8.8	/	/	/
21	F01410034	ROS.M6 6,4X12,5X1,6 U6592 IX	WASHER M6 6,4X12,5X1,6 U6592	/	/	/
22	UA6900128	SUPP PORTAGETTI CENTRALE	SUPP PORTAGETT CENTRALE	/	/	/
23	F01020459	VITE M 8X1,25X 70 U5739 A2IX	/	/	/	/
24	UA6900571	KIT GUARNIZ.PISTONE CENTRALE	KIT GASKET PISTON CENTRAL	/	/	/
25	UA6900572	VIT. TE UNI 5737 16X250 PF 8.8	SCREW TE U5737 16X250 PF 8.8	/	/	/
26	F01230130	DADO M20X2,5 D982 A2 IX	NUT M20X2,5 D982 A2 IX	/	/	/
27	UA6900198	MOLLA A TAZZA 20,4X40X2,5	CUP SPRING 20,4X40X2,5	/	/	/
28	UA7000005	PIST.CENTRALE WORK 15L	CENTRAL PISTON WORK 15L	/	/	/
29	UA6900142	PERNO CENTR.-INTERMED. WORK12L	CENTRAL-INTERMED. HUB WORK12L	/	/	/
30	F01020583	VITE M16X2,00X110 U5737 8.8GE	SCREW M16X2,00X110 U5737 A2IX	/	/	/
31	UA6900459	DADO BASSO M16	NUT LOW M16	/	/	/
32	F01410124	ROS.M20 21X 37X 3 U6592 ZN	WASHER M20 21X 37X 3 U6592 ZN	RONDEL.M20 21X 37X 3 U6592 ZN	MUTTER M20 21X 37X 3 U6592 ZN	ARANDELA M20 21X37X3 U6592 ZN
33dx	UA6900213	CAVO BD WORK DX L=645 TOTALE	ROPE BD WORK DX L=645 TOTAL	/	/	/
33sx	UA6900214	CAVO BD WORK SX - L=605 TOTALE	/	/	/	/
34	UA6900220	SPINA A SCATTO	PLUG SNAP	/	/	/
35	UA6900123	CATENACCIO WORK ZE (LEVA DI BL	CATENACCIO WORK ZE (LEVA DI BL	/	/	/
36	F01020301	VITE M12X1,75X100 U5737 8.8GE	BOLT M12X1,75X100 U5737 8.8GE	/	/	/
37	F01410077	ROS.M12 13X 24X2,5 U6592 IX	WASHER M12 13X 24X2,5 U6592	/	/	/
38	UA6900444	AUTOBLOCCANTE BASSO M12	NUT LOW SELF M12	/	/	/
39	UA6900256	MOLLA TAZZA 12,2X25X1,5 DAC	SPRING CUP 12,2X25X1,5 DAC	/	/	/
40	UA6900573	FRIZIONE CENTRALE	CLUTCH CENTRAL	/	/	/
41	UA6900164	PIATTO ORBILAN 150	/	/	/	/
42	UA6900443	VITE VSP 8X25	SCREW VSP 8X25	/	/	/
43	UA6900077	TELAIO CENTRALE BARRA WORK 12L	TELAIO CENTRALE BARRA WORK 12L	/	/	/
44	UA6900078	TELAIO INTERMED SX-DX WORK 12L	INTERMED FRAME SX-DX WORK 12L	/	/	/
45	UA6900045	TIR.CHIUS.WORK 12MT	CLOSING TIE RODE WORK 12MT	/	/	/
46	F01200469	DADO M20X2,5 U5589 6.8GE	NUT M20X2,5 U5589 6.8GE	/	/	/
47	UA6900333	PERNO REG.TIR.	PERNO REG.TIR.	/	/	/
48	UA6900141	GUIDA TIR.WORK	GUIDA TIR.WORK	/	/	/
49	U36070269	VTE M12X80 UNI5737 8.8 GEOMET	BOLT M12X80 UNI5737 8.8 GEOMET	/	/	/
50	UA6900127	LEVA TIR.	LEVA TIR.	/	/	/
51	UA6900137	DIST.D.21.3X20	DIST.D.21.3X20	/	/	/
52	UA6900139	DIST.D.21.3X30	DIST.D.21.3X30	/	/	/

Centrale + bracci Work 12X / Central + booms Work 12X

TAV. 010



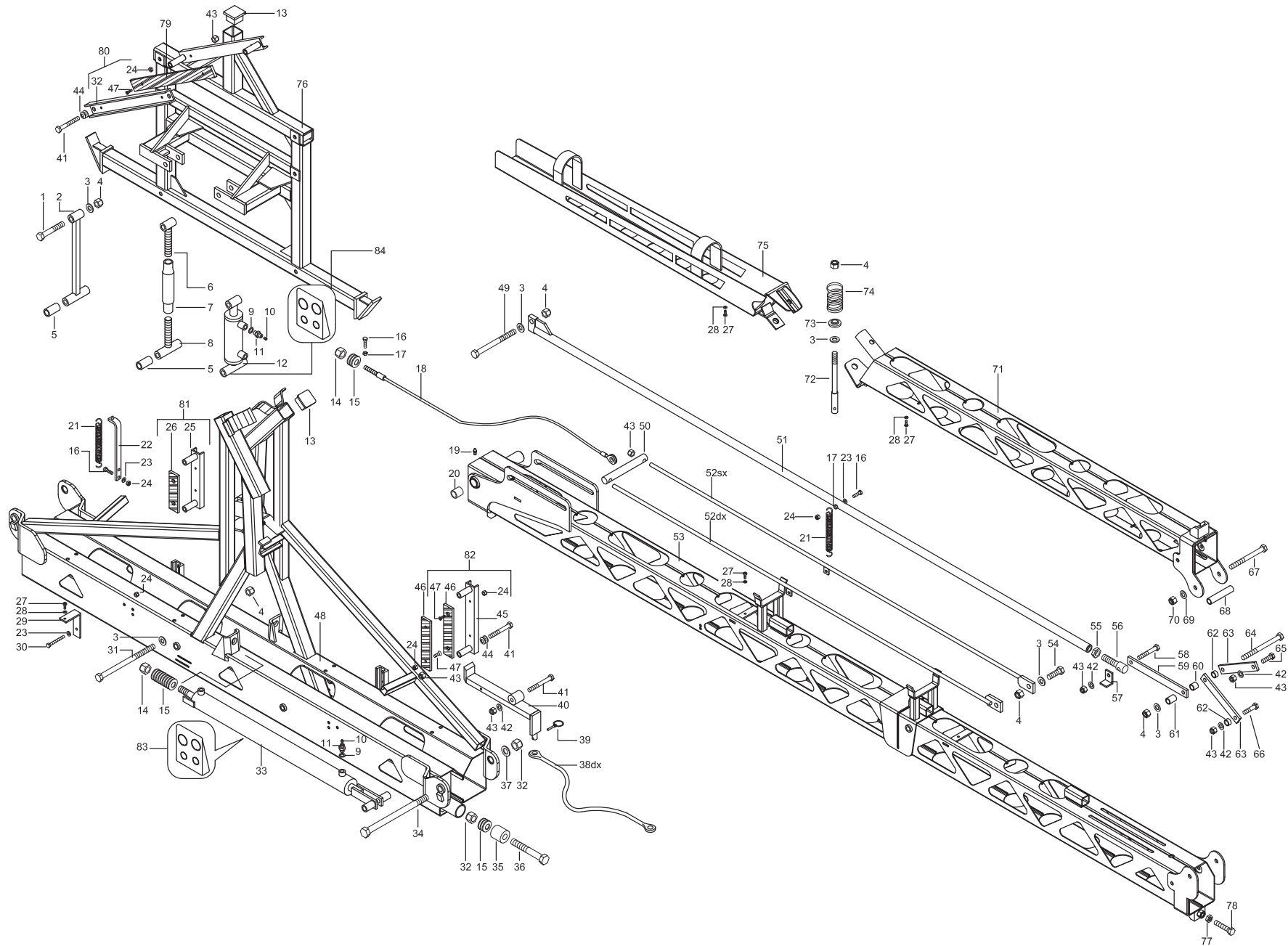
**Centrale + bracci Work 12X / Central + booms Work 12X**

TAV. 010

Pos.	Cod.	Descrizione	Description	Description	Benennung	Descripcion
53	UA6900138	DIST.D.21.3X11	DIST.D.21.3X11	/	/	/
54	UA6900126	LEVA SNODO INTERMEDIO	LEVA SNODO INTERMEDIO	/	/	/
55	UA6900310	VTE M14X170 8.8 PF	SCREW M14X170 8.8 PF	/	/	/
56	F01030520	VITE M12X1,75X 40 U5739 8.8GE	SCREW M12X1,75X40 U5739 8.8GE	/	/	/
57	F01020666	VITE M12X1,75X 50 U5737 8.8GE	/	/	/	/
58	F01410089	ROS. M14 15X28X2,5 U6592 IX	WASHER M14 15X28X2,5 U6592 IX	/	/	/
59	U06040139	DEB M14X22X14 AUBL.UNI7474 6S	/	/	/	/
60	UA6900308	VTE M14X70 8.8 TF	SCREW M14X70 8.8 TF	/	/	/
61	U06040129	DEB M14X22X8 UNI5589 6S	DEB M 14X22X8 UNI 5589 6S	/	/	/
62	U36070328	VTE M14X150 UNI5737 8.8	BOLT M14X150 UNI5737 8.8	/	/	/
63	UA6900140	DIST.D.21.3X105	DIST.D.21.3X105	/	/	/
64	UA6900080	TELAIO SEMIPROL WORK 12L SX-DX	BOOM BODY EXT. WORK 12L SX-DX	/	/	/
65	UA6900332	PERNO SNODO PROLUNGA BARRA	PIVOT JOINT EXTENSION	/	/	/
66	UA6900229	RONDELLA NYLON	NYLON WASHER	/	/	/
67	U18020007	MOLLA PROLUNGA BD SUPERWORK	MOLLA PROLUNGA BD SUPERWORK	/	/	/
68	UA6900079	TELAIO PROLUNGA SX-DX WORK 12L	TELAIO PROLUNGA SX-DX WORK 12L	/	/	/
69	UA6900313	VTE M16X180 PF 8.8	SCREW M16X180 PF 8.8	/	/	/
70	UA6900342	TAPPO QUADRO 50 PLASTICA NERA	TAPPO PLASTICA QUADRO 50	/	/	/
71	UA6900076	TELAIO BILANCIER CENT WORK 12L	TELAIO BILANCIER CENT WORK 12L	/	/	/
72	UA6900343	TAPPO PLASTICA QUADRO 40	TAPPO PLASTICA QUADRO 40	/	/	/
73	UA6900577	KIT GUARNIZ.PISTONE BILANCIERE	KIT SEALS PISTON ROCKER	/	/	/

Centrale + bracci Work 15X / Central + booms Work 15X

TAV. 020





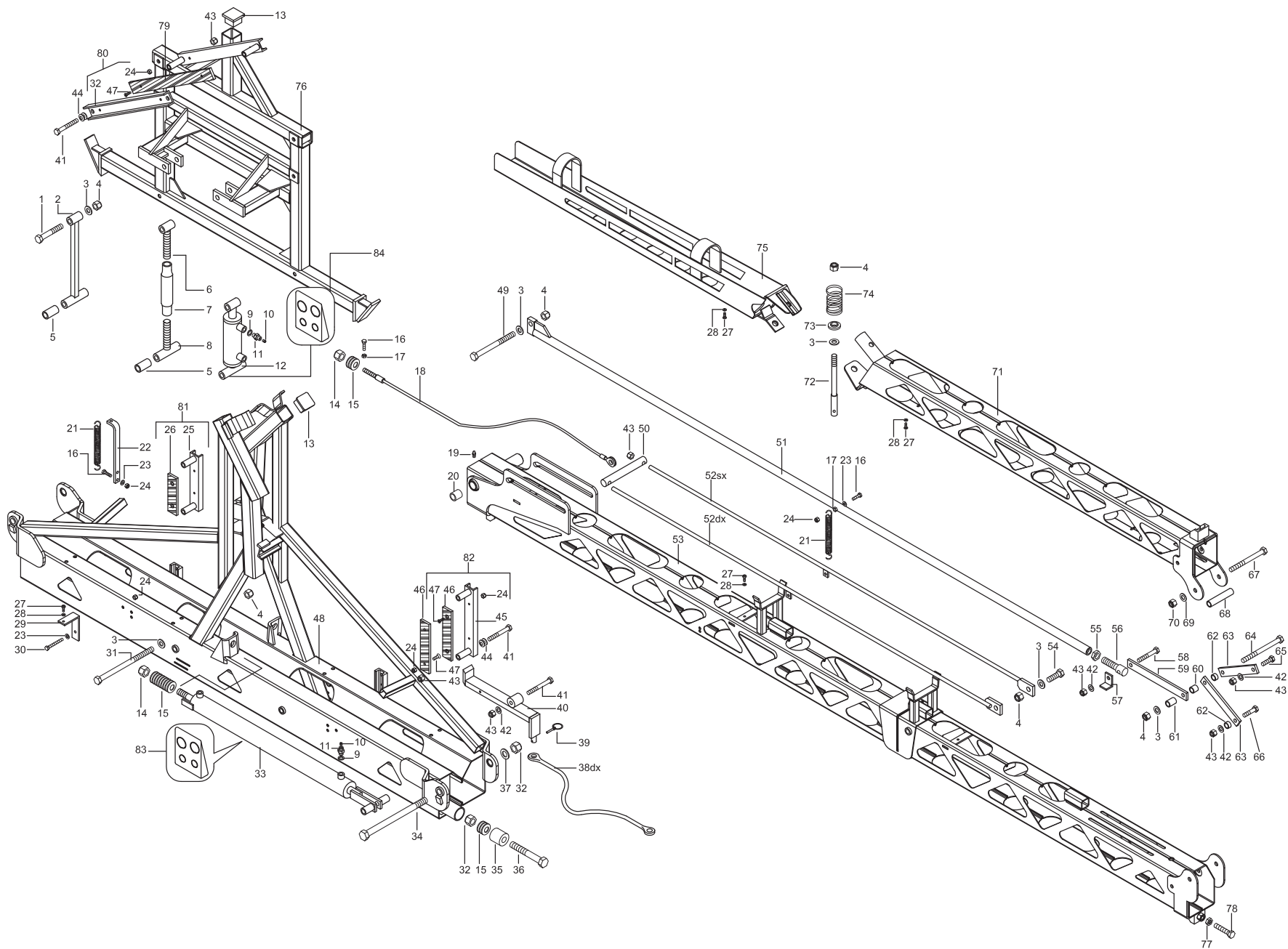
**Centrale + bracci Work 15X / Central + booms Work 15X**

TAV. 020

Pos.	Cod.	Descrizione	Description	Description	Benennung	Descrpcion
1	F01020302	VITE M16X2X90 U5737 8.8GE	BOLT M16X2X90 U5737 8.8GE	/	/	/
2	UA6900122	BIELLA FISSARVIZIO	BIELLA FISSARVIZIO	/	/	/
3	UA6900453	RONDELLA PIANA \$16	FLAT WASHER D.16	/	/	/
4	UA6900452	AUTOBLOCCANTE BASSO M16	AUTOBLOCCANTE BASSO M16	/	/	/
5	UA6900569	DISTANZIALE Ø26,9X50	DISTANCE D.26,9X50	/	/	/
6	UA6900130	TENDITORE DX WORK	TENDITORE DX WORK	/	/	/
7	UA6900578	MANICOTTO L=200 X CRS15	SLEEVE L = 200 X CRS15	/	/	/
8	UA6900131	TENDITORE SINISTRO WORK	LEFT STRECHER WORK	/	/	/
9	UA6900356	RONDELLA BONDED 1/4"	WASHER BONDED 1/4"	/	/	/
10	U36000059	STROZZATORE M8 FORO /,8	STROZZATORE M8 FORO /,8	/	/	/
11	UA6900225	NIPPLIO 1/4"-1/4"-FOR.INT.M8	NIPPLIO 1/4"-1/4"-FOR.INT.M8	/	/	/
12	U04410130	PISTONE VAR.ASS.WORK 15L	/	/	/	/
13	UA6900342	TAPPO QUADRO 50 PLASTICA NERA	TAPPO PLASTICA QUADRO 50	/	/	/
14	F01230130	DADO M20X2,5 D982 A2 IX	NUT M20X2,5 D982 A2 IX	/	/	/
15	UA6900198	MOLLA A TAZZA 20,4X40X2,5	CUP SPRING 20,4X40X2,5	/	/	/
16	UA6900473	TE FE 8X30 TF	TE FE 8X30 TF	/	/	/
17	F01200245	DADO M8X1,25 U5588 A2IX	NUT M8X1,25 U5588 A2IX	ECROU M 8X1,25 U5588 A2 IX	MUTTER M 8X1,25 U5588 A2 IX	TUERCA M 8X1,25 U5588 A2 IX
18	UA6900216	FUNE TIRANTE WORK 15L	CABLE GUY WORK 15L	/	/	/
19	U14120002	INGRASSATORE M8X1.25 UNI7663-A	GREASENIPPLE M8X1.25 UNI7663-A	/	/	/
20	UA6900230	BOCCOLA SINTERIZZATA 20.28.30	/	/	/	/
21	UA6900326	MOLLA CATENACCIO BD WORK	SPRING BOLT BD WORK	/	/	/
22	UA6900129	PIATTO TENDIMOLLA WORK	STRETCHER SPRING PLATE WORK	/	/	/
23	U28110016	ROS.M8 8,4X 17X1,6 U6592 IX	WASHER M8 8,4X 17X1,6 U6592 IX	RONDELLE M8 8,4X 17X1,6 IX	SCHEIBE M8 8,4X 17X1,6 IX	ARANDELA M8 8,4X 17X1,6 IX
24	F01230032	DADO M8X1,25 D982 A2IX	NUT M8X1,25 D982 A2IX	ECROU M 8X1,25 D982 A2 IX	MUTTER M 8X1,25 D982 A2 IX	TUERCA M 8X1,25 D982 A2 IX
25	UA6900573	FRIZIONE CENTRALE	CLUTCH CENTRAL	/	/	/
26	UA6900164	PIATTO ORBILAN 150	/	/	/	/
27	U36090034	VTCEI M6X18 UNI5931 8.8	VTCEI M6X18 UNI5931 8.8	/	/	/
28	F01410034	ROS.M6 6,4X12,5X1,6 U6592 IX	WASHER M6 6,4X12,5X1,6 U6592	/	/	/
29	UA6900128	SUPP PORTAGETTI CENTRALE	SUPP PORTAGETT CENTRALE	/	/	/
30	F01020459	VITE M 8X1,25X 70 U5739 A2IX	/	/	/	/
31	UA6900572	VIT. TE UNI 5737 16X250 PF 8.8	SCREW TE U5737 16X250 PF 8.8	/	/	/
32	UA6900605	FRIZIONE BILANCIERE	CLUTCH ROCKER	/	/	/
33	UA7000005	PIST.CENTRALE WORK 15L	CENTRAL PISTON WORK 15L	/	/	/
34	UA6900142	PERNO CENTR.-INTERMED. WORK12L	CENTRAL-INTERMED. HUB WORK12L	/	/	/
35	UA6900579	SPESSORE PERNI MOLLE	THICK SPRING PINS	/	/	/
36	UA6900369	TE 8.8 20X140 PF	TE 8.8 20X140 PF	/	/	/
37	UA6900351	RONDELLA PIANA 20 ZB	WASHER	/	/	/
38dx	UA6900213	CAVO BD WORK DX L=645 TOTALE	ROPE BD WORK DX L=645 TOTAL	/	/	/
38sx	UA6900215	FUNE TIRANTE WORK 14-15MT	/	/	/	/
39	UA6900220	SPINA A SCATTO	PLUG SNAP	/	/	/
40	UA6900123	CATENACCIO WORK ZE (LEVA DI BL	CATENACCIO WORK ZE (LEVA DI BL	/	/	/
41	F01020170	VITE M12X1,75X100 U5737 8.8ZN	SCR. M12X1,75X100 U5737 8.8ZN	VIS M12X1,75X100 5737 8.8 ZN	SCHRA.M12X1,75X100 5737 8.8 ZN	TORN. M12X1,75X100 5737 8.8 ZN
42	F01410077	ROS.M12 13X 24X2,5 U6592 IX	WASHER M12 13X 24X2,5 U6592	/	/	/
43	UA6900444	AUTOBLOCCANTE BASSO M12	NUT LOW SELF M12	/	/	/
44	UA6900256	MOLLA TAZZA 12,2X25X1,5 DAC	SPRING CUP 12,2X25X1,5 DAC	/	/	/
45	UA6900574	FRIZIONE CENTRALE LUNGA	CLUTCH CENTRAL LONG	/	/	/
46	UA6900580	ORBILAN L=200	ORBILAN LENGTH=200	/	/	/
47	UA6900443	VITE VSP 8X25	SCREW VSP 8X25	/	/	/
48	UA6900083	TELAIO CENTRALE WORK15L	WORK15L CENTRAL FRAME	/	/	/
49	UA6900313	VTE M16X180 PF 8.8	SCREW M16X180 PF 8.8	/	/	/
50	UA6900581	PERNO TIRANTE	PIVOT ROD	/	/	/
51	UA6900132	TIR.CHIUS.WORK 15L DX-SX	CLOSING ROPE WORK 15L DX-SX	/	/	/
52dx	UA6900144	TIRANTE DX WORK 15L	GUY WORK DX 15L	/	/	/

Centrale + bracci Work 15X / Central + booms Work 15X

TAV. 020

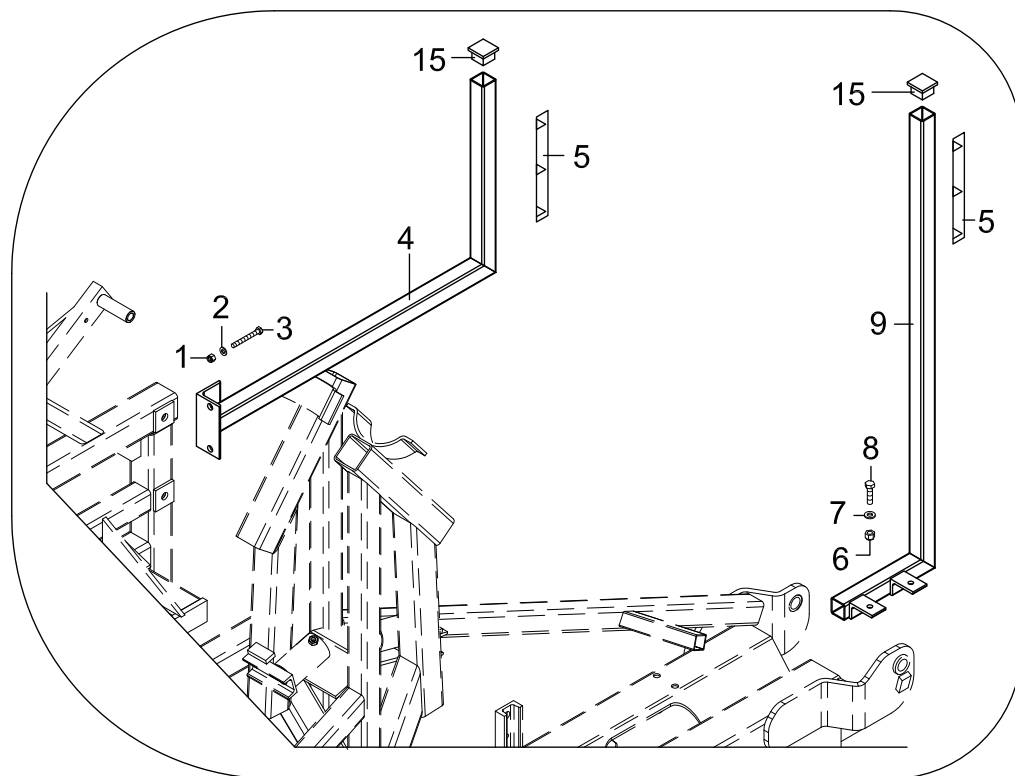


**Centrale + bracci Work 15X / Central + booms Work 15X**

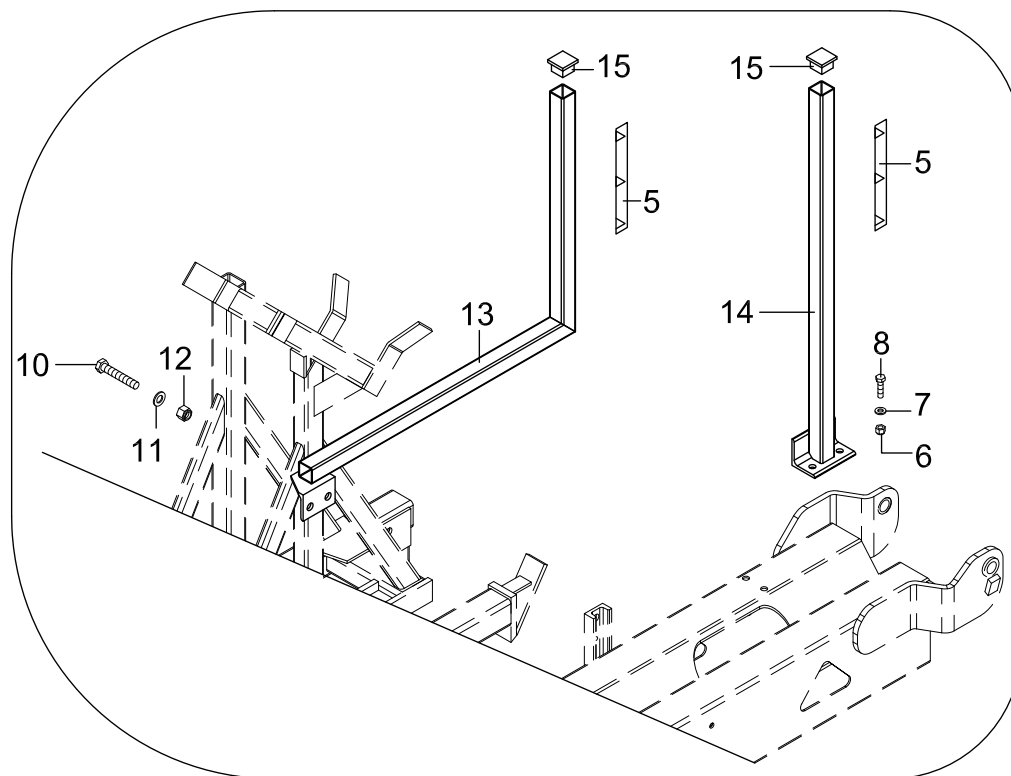
TAV. 020

Pos.	Cod.	Descrizione	Description	Description	Benennung	Descripcion
52sx	UA6900145	TIRANTE SX WORK 15L	GUY WORK SX 15L	/	/	/
53	UA6900084	TEL BRACC.INTER WORK15L DX-SX	TEL BRACC.INTER WORK15L DX-SX	/	/	/
54	U36070274	VTE M16X50 UNI5739 8.8 GEOMET	SCREW M16X50 U5739 8.8 GEOMET	/	/	/
55	F01200469	DADO M20X2,5 U5589 6.8GE	NUT M20X2,5 U5589 6.8GE	/	/	/
56	UA6900333	PERNO REG.TIR.	PERNO REG.TIR.	/	/	/
57	UA6900141	GUIDA TIR.WORK	GUIDA TIR.WORK	/	/	/
58	U36070269	VTE M12X80 UNI5737 8.8 GEOMET	BOLT M12X80 UNI5737 8.8 GEOMET	/	/	/
59	UA6900582	LEVA TIRANTE	LEVER ROD	/	/	/
60	UA6900137	DIST.D.21.3X20	DIST.D.21.3X20	/	/	/
61	UA6900139	DIST.D.21.3X30	DIST.D.21.3X30	/	/	/
62	UA6900138	DIST.D.21.3X11	DIST.D.21.3X11	/	/	/
63	UA6900583	LEVA INTERMEDIO	INTERMEDIATE LEVER	/	/	/
64	U36070294	VTE M16X170 UNI5737 8.8 GEOMET	SCREW M16X170 U5737 8.8 GEOMET	/	/	/
65	F01030520	VITE M12X1,75X 40 U5739 8.8GE	SCREW M12X1,75X40 U5739 8.8GE	/	/	/
66	U36070051C	VITE M12X1,75X50 U5737 8.8GE	BOLT M12X1,75X50 U5737 8.8GE	/	/	/
67	U36070328	VTE M14X150 UNI5737 8.8	BOLT M14X150 UNI5737 8.8	/	/	/
68	UA6900140	DIST.D.21.3X105	DIST.D.21.3X105	/	/	/
69	U28110010	ROS. M14 15X28X2,5 U6592 IX	WASHER M14 15X28X2,5 U6592 IX	/	/	/
70	U06040139	DEB M14X22X14 AUBL.UNI7474 6S	/	/	/	/
71	UA6900086	TEL BRACCIO SEMIPROL.WORK 15L	TEL BRACCIO SEMIPROL.WORK 15L	/	/	/
72	UA6900332	PERNO SNODO PROLUNGA BARRA	PIVOT JOINT EXTENSION	/	/	/
73	UA6900229	RONDELLA NYLON	NYLON WASHER	/	/	/
74	U18020007	MOLLA PROLUNGA BD SUPERWORK	MOLLA PROLUNGA BD SUPERWORK	/	/	/
75	UA6900085	TELAIO PROLUNGA WORK15L DX-SX	FRAME EXTENSION WORK15L DX-SX	/	/	/
76	UA6900082	TELAIO ALTO BILANCIERE WORK15L	TELAJ ALTO BILANCIERE WORK15L	/	/	/
77	UA6900308	VTE M14X70 8.8 TF	SCREW M14X70 8.8 TF	/	/	/
78	U06040129	DEB M14X22X8 UNI5589 6S	DEB M 14X22X8 UNI 5589 6S	/	/	/
79	UA6900249	ORBILAN 40X8X380 F8,75	/	/	/	/
80	UA6900143	K.FRIZ.BILANC.+PATTINO WORK15L	K.FRIZ.BILANC.+PATTINO WORK15L	/	/	/
81	UA6900575	FRIZIONE CENTR. CORTA COMPLETA	SHORT CENTER CLUTCH COMPLETE	/	/	/
82	UA6900576	FRIZIONE CENTR. LUNGA COMPLETA	CLUTCH CENTRAL LONG COMPLETE	/	/	/
83	UA6900571	KIT GUARNIZ.PISTONE CENTRALE	KIT GASKET PISTON CENTRAL	/	/	/
84	UA6900577	KIT GUARNIZ.PISTONE BILANCIERE	KIT SEALS PISTON ROCKER	/	/	/

### CROSS 15



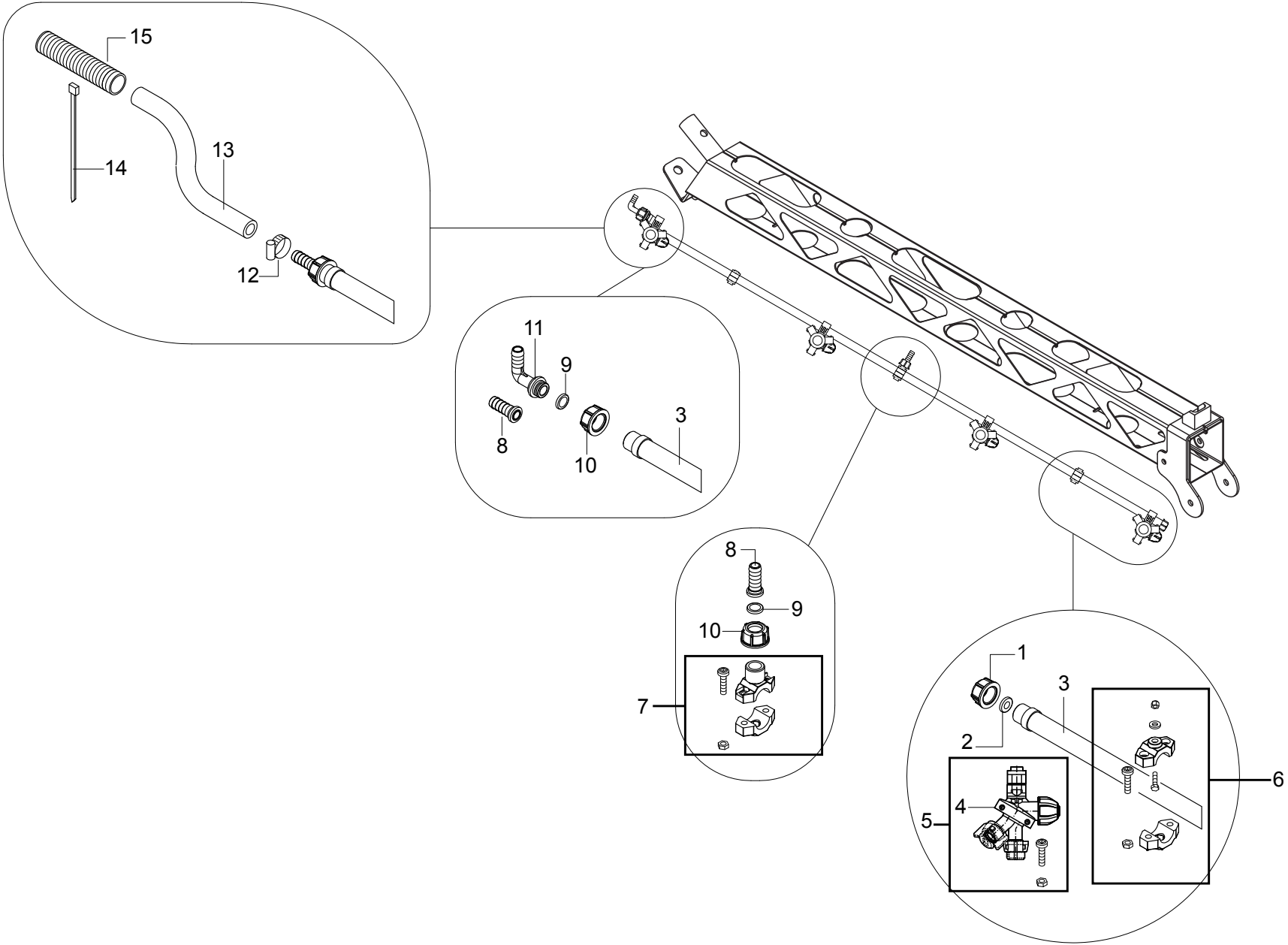
### CROSS 12



**Kit indicatore variatore assetto / Kit indicator variable trim**

TAV. 030

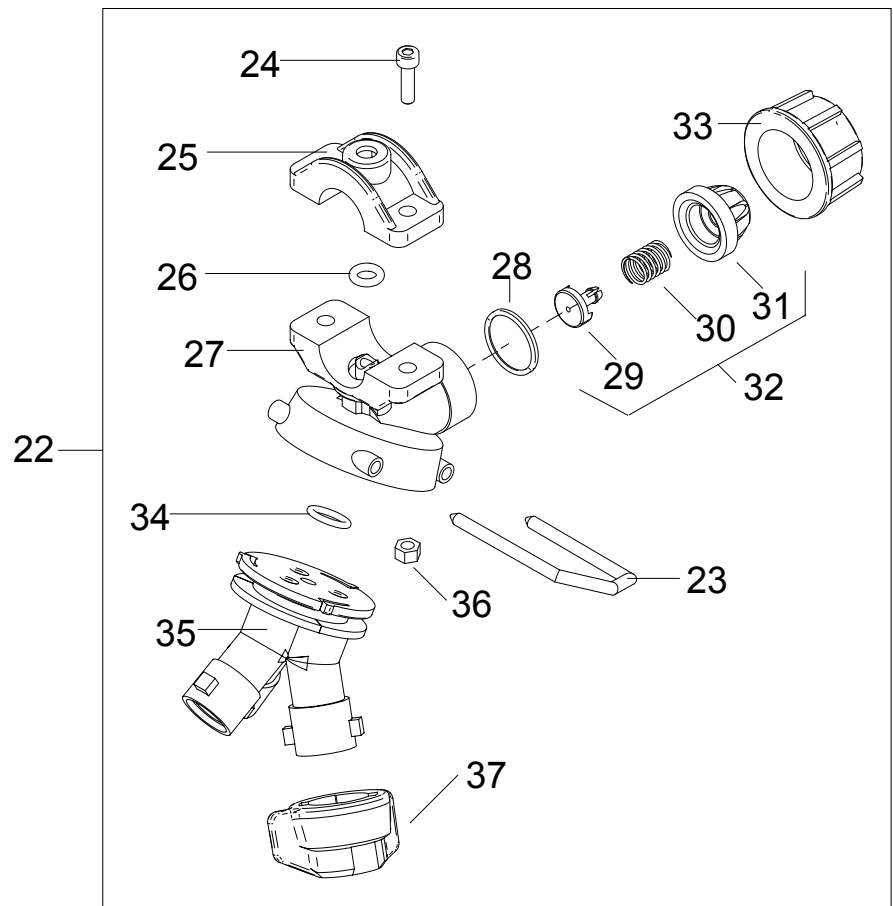
Pos.	Cod.	Descrizione	Description	Description	Benennung	Descripcion
1	F01230025	DADO M 6X 1 D985 A2IX	NUT M6X1 D982 A2 IX	/	/	/
2	U28110030C	RT \$6,4X12X1,6 UNI6592 100HV X VTE	/	/	/	/
3	F01020707	VITE M6X1X70 U5739 A2IX	BOLT M6X1X70 U5739 A2 IX	/	/	/
4	U18190004	INDICATORE LATO BIL WORK 15L	/	/	/	/
5	U32150052	ETICHETTA LIVELLAMENTO WORK12L-15L	/	/	/	/
6	U06040146	DEA M8X13X10,6 AUBL.UNI7473 INOX	/	/	/	/
7	F01410050	ROS.M8 8,4X 17X1,6 U6592 IX	WASHER M8 8,4X 17X1,6 U6592 IX	RONDELLE M8 8,4X 17X1,6 IX	SCHEIBE M8 8,4X 17X1,6 IX	ARANDELA M8 8,4X 17X1,6 IX
8	F01020443	VITE M8X1,25X25 U5739 A2IX	SCR. M8X1,25X25 U5739 A2IX	VIS M8X1.25X25 U5739 A2 IX	SCHRAUBE M8X1.25X25 5739 A2 IX	TORNILLO M8X1.25X25 5739 A2 IX
9	U30070005	INDICATORE LATO BARRA WORK 15L	/	/	/	/
10	UA6900584	VIT. TE FE UNI 5739 12X70 TF 4	SCREW TE FE U5739 12X70 TF 4	/	/	/
11	U28110015	RT \$13X24X2,5 UNI6592 100HV GEOMET	/	/	/	/
12	U06040078	DEB M20X30X17,5 AUB.UNI7474 6S GEOM	/	/	/	/
13	U18190005	INDICATORE LATO BIL WORK 12L	/	/	/	/
14	U30070006	INDICATORE LATO BARRA WORK 12L	/	/	/	/
15	U32020118	TAPPO TUBO QUADRO 30X30 SP.1-3	SQUARE TUBE CAP 30X30 THKN.1-3	/	/	/



## Ricambi acqua Work 12-15X

TAV. 040

Pos.	Cod.	Descrizione	Description	Description	Benennung	Descripcion
1	F12019503	TAPPO F G1/2	CAP F G1/2	BOUCHON FEMELLE G1/2	KAPPE INNENGEW. G1/2	TAPADOR HEMBRA G1/2
2	U12100268	GUAR.D19X10X3,4 X GALLET.QUICK	GASKET OF FLY-NUT QUICK QUAD25	/	/	/
3	U00160262	ASTA P.G.4F \$7 I=500 INOX	BOOM P.G.4F \$7 I=500 INOX	/	/	/
3	U00160436	ASTA P.G.3F \$7 I=500 IX AL.INF	ASTA P.G.3F \$7 I=500 IX AL.INF	/	/	/
3	U00160260	ASTA P.G.3F \$7 I=500 INOX	NOZZLE SUPPORT ROD 3 HOLES D7	BARRE D7 3 TROU INOX	STANGE D7 3 LOCHEN INOX	ASTA D7 3 AGUJRO INOX
3	U00160440	ASTA P.G.7F \$7 I=500 IX AL.INF	AST P.G.7F \$7 I=500 IX AL.INF	/	/	/
4	U12240026	TREEJET QUICK 401 1/2" F7 ARAG	TREEJET 401-STOPCOCK-HOLE	/	/	/
5	U12240356	TREEJET QUICK 401 1/2"F7+VT ARAG	/	/	/	/
6	U18050060	K MORS NY X ASTE+VTE6X20+DADO	/	/	/	/
7	U10030100	FASCETTA ALIMENT.1/2+CAV+VIT *	CLAMP 1/2"+ JUMPER + INOX SCRE	GAINÉ 1/2" CABLE+VIS	KLEMME ALIM.1/2"KABEL+SCHRAUBE	BRAZADERA ALIMEN.1/2"+CAV+TORN
8	U28020020	RPGMD \$13 OTTONE	MALE STRAIG.HOSE FITT D13 BRAS	/	/	/
9	U12090008	GUARN.PIANA \$12,5X18,5X2 POLIE	PLAT GASKET D12,5X18,5X2 POLIE	/	/	/
10	U12000056	GAL G1/2 CH24 OTTONE	FLY-NUT G1/2 CH24 BRASS	/	/	/
11	U28030063	RPGMC \$13 OTTONE	MALE CURVED HOSEFITT D13 BRASS	/	/	/
12	F02300064	FASCE.INOX W4 12X22 BANDA 9 CO	INOX CLAMP W4 12X22 BANDA 9 CO	/	/	/
13	U32040035	TUBO PVC 13,5X21 NERO 40/120BA	PIPE PVC13,5X21 BLACK 40/120BA	/	/	/
14	F02300060	FASCETTA POLYA. 365X7,8 NERA	HOLE CLAMP 35/45 H12	/	/	/
15	U12290027	GUAINA D.25 ISOL. GEWISS DF25N	GASKET D.25 ISOL. GEWISS DF25N	/	/	/





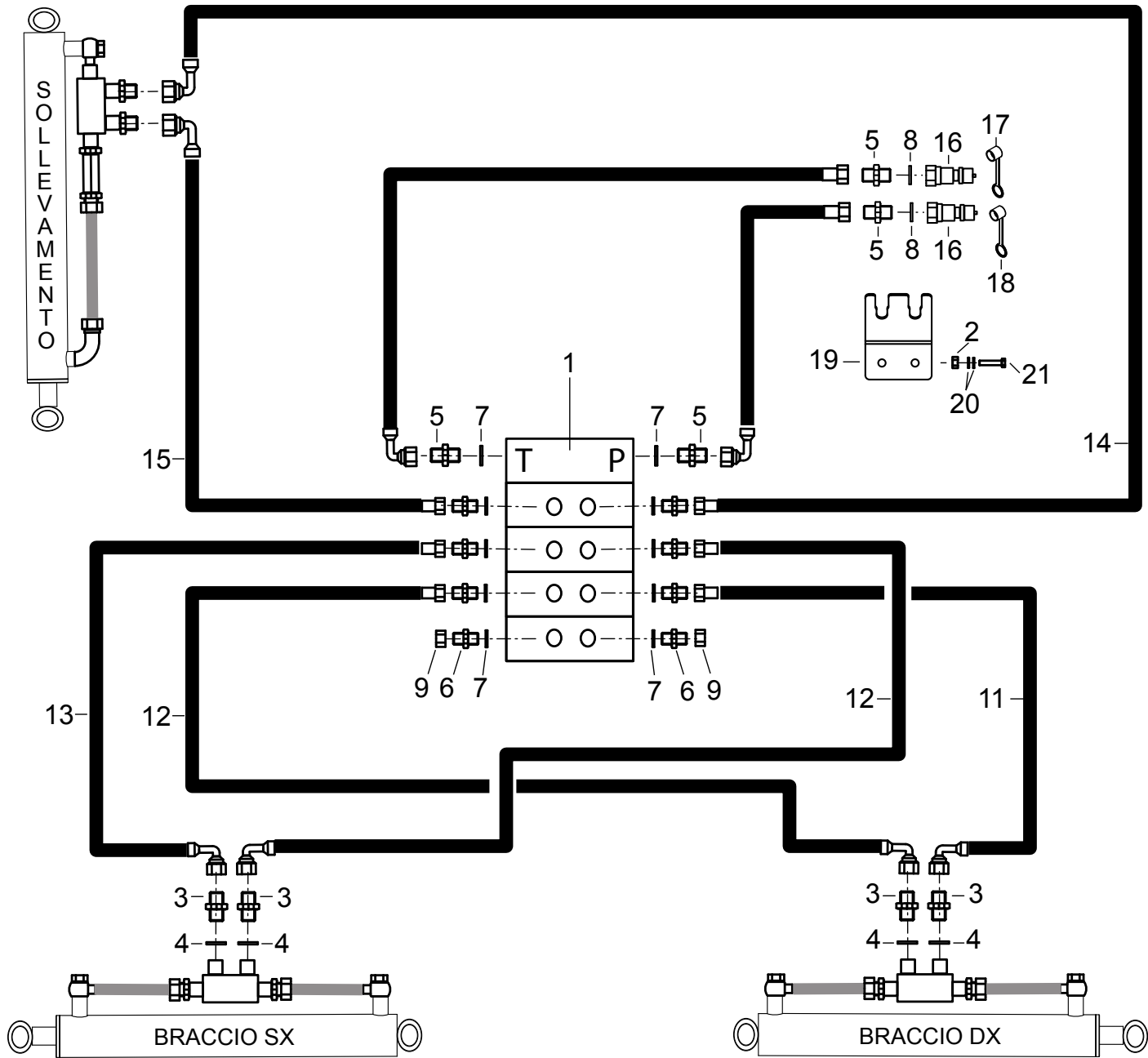
TREEJET QUICK 401 F7

TAV. 050

Pos.	Cod.	Descrizione	Description	Description	Benennung	Descripcion
22	U12240298	TREEJET QUICK 401 F7 +VITI E D	TREEJET QUICK 401 F7 +SCREWS			
23	UA7000152	FORCELLA PER 3JET VERTICALE	TREEJET VERTICAL FORK	/	/	/
24	F01040223	VITE M5X0,8X20 U5931 A2 IX	SCREW M5X0,8X20 U5931 A2 IX	/	/	/
26	UA7000193	GUARN.O-RING 6X2,5 EPDM	O.RING GASKET 6X2,5 EPDM	/	/	/
27	UA7000725	CORPO SUP PGT ASSIALE 3V.D.1/2"-D.7	/	/	/	/
28	UA7000356	MEMBRANA ANTIGOCCI IN EPDM	MEMBRANA ANTIGOCCI IN EPDM	/	/	/
28	UA7000717	MEMBRANA ANTIGOCCIA IN VITON	MEMBRANE DRIP VITON	/	/	/
29	UA7000427	SPINTORE VALVOLA ANTIG A MEMBRANA	SPINTORE VALV.ANTIG A MEMB.	/	/	/
30	UA7000364	MOLLA INOX ANTIG.MEMBR. /,5BAR	MOLLA IX ANTIG.MEMBR./,5BAR	/	/	/
30	UA7000364	MOLLA INOX ANTIG.MEMBR. /,5BAR	MOLLA IX ANTIG.MEMBR./,5BAR	/	/	/
31	UA7000117	CAPSULA ANTIGOCCIA DISERBO ROSSA	CAPSULA ANTIGOCCIA DISER.RED	/	/	/
31	UA7000118	CAPSULA ANTIGOCCIA DISERBO NERA	CAPSULA ANTIGOCCIA DISER.NERA	/	/	/
32	UA7000271	KIT CAPSULA ANTIG.DIS.ROSSA /,5 BAR	CAPSULE STOPCOCK DISERB. KIT	/	/	/
32	UA7000272	KIT CAPSULA ANTIG.DIS.GIALLA /,2BAR	KIT CAPSUL ANTIG.DIS.GIALLA /	/	/	/
33	UA7000502	GIRELLO G 3/4 V	/	/	/	/
34	UA7000191	GUARN.O-RING	O.RING GASKET	/	/	/
36	F01200221	DADO M5X0,8 U5588 A2 IX	NUT M5X0,8 U5588 A2 IX	/	/	/

Collegamenti oleodinamici barra / Boom connection scheme

TAV. 060



Collegamenti oleodinamici barra / Boom connection scheme

TAV. 060

Pos.	Cod.	Descrizione	Description	Description	Benennung	Descripcion
1	U06030077	DISTR.OILDRIVE 4+1EVG DINOIL	DISTRB.OILDRIVE 4+1EVG DINOIL	/	/	/
2	F01230032	DADO M8X1,25 D982 A2IX	NUT M8X1,25 D982 A2IX	ECROU M 8X1,25 D982 A2 IX	MUTTER M 8X1,25 D982 A2 IX	TUERCA M 8X1,25 D982 A2 IX
3	U20000102	NIPPLO 1/4"-1/4" DI=,8 CH.19	NIPPLO 1/4"-1/4" DI=,8 CH.19	/	/	/
4	F03020069	RONDELLA BONDED AUTOCENT 1/4	/	/	/	/
5	F03150222	NIPPLO MM CIL-CIL 1/2-3/8 ZG	NIPPLE M-M CYL-CYL 1/2-3/8 ZG	NIPPLE H-H CIL-CIL 1/2-3/8 ZG	NIPPEL M-M CIL-CIL 1/2-3/8 ZG	NIPLE H-H CIL-CIL 1/2-3/8 ZG
6	F03150310	NIPPLO MM CIL-CIL 3/8-1/4 ZN	NIPPLE CYL.MALE3/8-1/4 ZN	NIPPLE MALE CYL.3/8-1/4 ZN	NIPPELZYL.3/8-1/4 ZN	NIPLE MACHO CIL.3/8-1/4 ZN
7	F03020070	RONDELLA BONDED AUTOCENT 3/8	BONDED WASHER 3/8"	/	/	/
8	F03020103	RONDELLA BONDED AUTOCENT 1/2	BONDED WASHER 1/2"	/	/	/
9	F03020062	TAPPO FEMMINA GIREVOLE BSP 1/4	/	/	/	/
10	U33011282	K.TUBO IDR.1/4" MT1,05 F+F90°	/	/	/	/
11	U33010895	K.TUBO IDR.1/4" MT0,65 F-F	/	/	/	/
12	U33010932	K.TUBO IDR.1/4" MT0,85 F+F	/	/	/	/
13	U33011202	K.TUBO IDR.1/4" MT0,70 F-F90	/	/	/	/
14	U33011231	K.TUBO IDR.1/4" MT4,40 F90°-F90°	/	/	/	/
15	U33011232	K.TUBO IDR.1/4" MT4,10 F90°-F	/	/	/	/
16	F03150935	INNESTO RAP.MASCH.1/2 A VALV.	QUICK CONNECT MALE CONE 1/2	CONNEXION RAPIDE MALE CONE 1/2	SCHNELLKUPP.GEWINDE KONISC 1/2	ACOPLAMIENTO.RAP.MACHO CONO 1/2
17	F05150330	CAPPUC.F X INN.M RAP.1/2 BLU	PROTECT. COVER CAP F 1/2 BLUE	COUVERCLE CONNEXION F 1/2 BLEU	DECKEL W 1/2 SCHNELLKUPP. BLUE	PAC PROTECCION F 1/2 AZUL
18	F05150325	CAPPUC.F X INN.M RAP.1/2 ROSSO	COVER CONNECT F 1/2 RED	COUVERCLE CONNEXION F 1/2 ROSE	DECKEL W 1/2 SCHNELLKUPP. ROT	PAC PROTECCION F 1/2 ROJO
19	U24040273V	PIASTRA SOST.2 ATTACCHI RAPIDI	/	/	/	/
20	F01410050	ROS.M8 8,4X 17X1,6 U6592 IX	WASHER M8 8,4X 17X1,6 U6592 IX	RONDELLE M8 8,4X 17X1,6 IX	SCHEIBE M8 8,4X 17X1,6 IX	ARANDELA M8 8,4X 17X1,6 IX
21	F01020443	VITE M8X1,25X25 U5739 A2IX	SCR. M8X1,25X25 U5739 A2IX	VIS M8X1.25X25 U5739 A2 IX	SCHRAUBE M8X1.25X25 5739 A2 IX	TORNILLO M8X1.25X25 5739 A2 IX



**USATE SEMPRE RICAMBI ORIGINALI  
ALWAYS USE ORIGINAL SPARE PARTS  
IMMER DIE ORIGINAL-ERSATZTEILE VERWENDEN  
EMPLOYEZ TOUJOURS LES PIECES DE RECHANGE ORIGINALES  
UTILIZAR SIEMPRE REPUESTOS ORIGINALES**

# **GASPARDO**

**Servizio Assistenza Tecnica - After Sales Service +39 0421 774956  
Servizio Ricambi - Spare Parts Service +39 0421 762895**

DEALER:



**MASCHIO GASPARDO SpA**

**Registered office & Production plant**

Via Marcello, 73 - 35011 Campodarsego (Padova) - Italy  
Tel. +39 049 9289810  
Fax +39 049 9289900  
info@maschio.com  
www.maschionet.com

**MASCHIO GASPARDO SpA**

**Production plant**

Via Mussons, 7 - 33075  
Morsano al Tagliamento (PN) - Italy  
Tel. +39 0434 695410  
Fax +39 0434 695425  
info@gaspardo.it

**MASCHIO DEUTSCHLAND GMBH**

Äußere Nürnberger Straße 5  
D - 91177 Thalmässing - Deutschland  
Tel. +49 (0) 9173 79000  
Fax +49 (0) 9173 790079  
dialog@maschio.de  
www.maschio.de

**MASCHIO FRANCE Sarl**

Rue Denis Papin ZA  
F - 45240 La Ferté St. Aubin  
France  
Tel. +33 (0) 2.38.64.12.12  
Fax +33 (0) 2.38.64.66.79  
info@maschio.fr

**000 МАСКИО-ГАСПАРДО РУССИЯ**

Улица Пушкина, 117 Б  
404130 Волжский  
Волгоградская область  
Тел. +7 8443 203100  
факс. +7 8443 203101  
info@maschio.ru

**MASCHIO-GASPARDO ROMANIA S.R.L.**

Strada Înfrâtitirii, F.N.  
315100 Chisineu-Cris (Arad) -România  
Tel. +40 257 307030  
Fax +40 257 307040  
info@maschio.ro

**MASCHIO GASPARDO  
NORTH AMERICA Inc**

112 3rd Avenue East  
Dewitt, IA 52742 - USA  
Ph. +1 563 659 6400  
Fax +1 563 659 6405  
info@maschio.us

**MASCHIO-GASPARDO IBERICA  
MASCHIO-GASPARDO POLAND  
MASCHIO-GASPARDO UCRAINA  
GASPARDO-MASCHIO TURCHIA  
MASCHIO-GASPARDO CINA  
MASCHIO-GASPARDO INDIA**