



SIP

*Instruction for work
Betriebsanleitung*

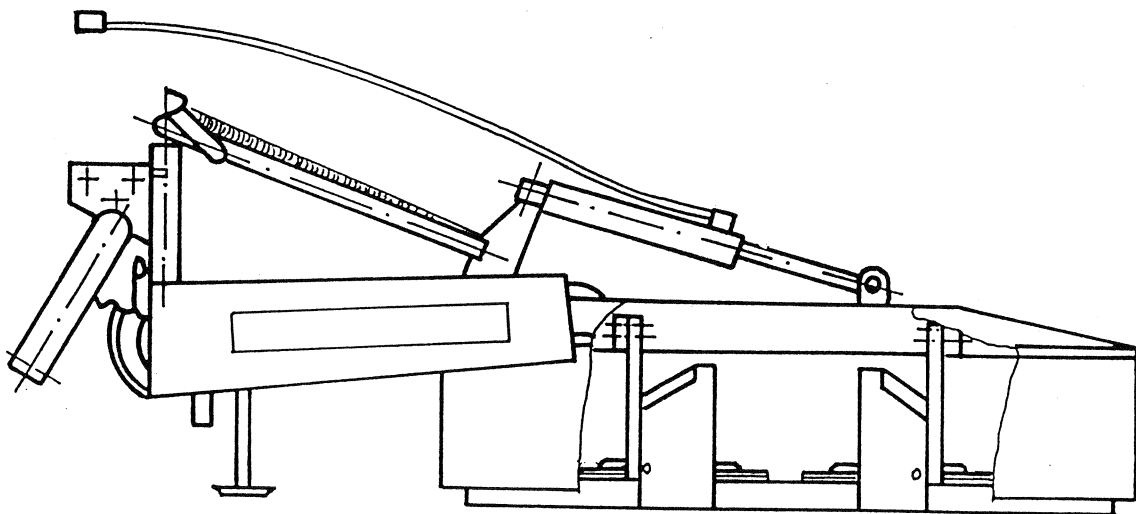
*List of spare parts
Ersatzteilliste*

ROTO

175 D, 215 D, 255 D, 295 D

rotary disc mower scheinmäher

+ CEP



Valid from serial number on:

Gültig ab Maschinnummer:

ROTO 175 = 111 - 210

ROTO 215 = 051 - 080

ROTO 255 = 171

ROTO 295 = 061

1996



SIP

STROJNA INDUSTRIJA d.o.o.
63311 Šempeter v Savinjski dolini
Slovenija

Tel: +386 (063) 702 211

Fax: +386 (063) 702 131

702 134

153887511

GESCHÄTZTER KÄUFER,

Bei der Arbeit benötigen Sie eine Maschine. Sie haben sich für eine aus unserem umfangreichen Programm entschlossen und wir gratulieren Ihnen dafür. Wir sind überzeugt, dass Sie damit zufrieden werden und bedanken uns bei Ihnen für das erwiesene Vertrauen.

EINSATZGEBIET

Die Maschine eignet sich ausschliesslich für normalen Einsatz in der Landwirtschaft (gezielte Verwendung). Jeder Einsatz ausser diesem Rahmen ist nicht zweckgemäss. Der Hersteller haftet nicht für den Schaden, der aus einer nichtgezielten Verwendung hervorgehen würde. Das Risiko trägt der Benutzer selbst.

Unter zweckmässigem Einsatz versteht sich auch die Einhaltung der Betriebs-, Bedienungs und Wartungsbedingungen, welche vom Hersteller vorgeschrieben werden. Die Maschine darf nur von einer für diese Arbeit fachlich und unfalltechnisch gebildeten Person bedient und repariert werden. Es müssen entsprechende Unfallschutzvorschriften wie auch sonstige allgemein geltende sicherheitstechnische, arbeitsmedizinische und Verkehrsvorschriften berücksichtigt werden. Eigenhändige Eingriffe in die Maschine schliessen jede Haftung des Herstellers für den daraus resultierenden Schaden aus.

DEAR BUYER,

You need a machine for your work and you have chosen it from our wide production program. Congratulations! We are sure that you will be satisfied with it. We sincerely thank you for your confidence.

APPLICABILITY

The machine has been designed strictly for normal use in agriculture. If the machine is used for any other purpose, and get damaged during this, the manufacturer is not liable for the damage caused to the machine. It is the user himself who bears the risk. All conditions for work and maintenance, prescribed by the manufacturer, should strictly be considered. The machine may only be used, handled and repaired by persons who are appointed to do this and who are aware of the danger. All relevant safety regulations as well as all generally used safety technical, working-medical and traffic regulations should be considered during the work with the machine.

The manufacturer is not liable for the damage, caused to the machine which has been rebuilt by the user, if the damage has occurred as a result of the rebuild.

TECHNISCHE DATEN

| | ROTO 175D | ROTO 215D | ROTO 255D | ROTO 295D | |
|----------------------------|--------------------|--------------------|--------------------|--------------------|---------------------------|
| Arbeitsbreite | 1700 mm | 2100 mm | 2500 mm | 2900 mm | Working width |
| Gewicht | 375 kg | 400 kg | 435 kg | 470 kg | Weight |
| Transportbreite | 1200 mm | 1200 mm | 1200 mm | 1200 mm | Transport width |
| Maximalhöhe bei der Arbeit | 1150 mm | 1150 mm | 1150 mm | 1150 mm | Maximal working height |
| Gelenkwelldrehzahl (max.) | 540 ⁻¹ | 540 ⁻¹ | 540 ⁻¹ | 540 ⁻¹ | P.T.O. Shaft rotations |
| Scheibendrehzahl | 2950 ⁻¹ | 2950 ⁻¹ | 2950 ⁻¹ | 2950 ⁻¹ | No. of disc rotations |
| Scheibenanzahl | 4 | 5 | 6 | 7 | No. of discs |
| Kraftbedarf des Schleppers | 20 kW | 25 kW | 30 kW | 35 kW | Necessary power required |
| Mähleistung | 2ha/h | 2,5ha/h | 3ha/h | 3,5ha/h | Capacity |
| Messeranzahl | 8 | 10 | 12 | 14 | No. of knives |
| Gelenkwelle: Bild.19 | | | | | P.T.O. Shaft: Fig 19 |
| Antrieb: | Keilriemen | 4 | Vee belts | | Main drive system |
| Scheibenantrieb | | Zahnradantrieb | | | Drive system of the discs |

TECHNICAL DATA

ROTO 175 = 811
ROTO 215 = 051³
ROTO 295 = 061

ERSATZTEILLISTE

SPARE PARTS LIST

ROTO 175D 215D 255D 295D

| No. on the figure Numer anzeichn. | Catalogue no. Katalog nummer | Description | Benennung | Quantity Stück |
|---|---------------------------------|----------------------|---------------------------|-------------------|
| 1 | 152926105-516.05.001.0 | Hitch weilded | Dreipunktaufhängung schw. | 1 |
| 2 | 153618008-546.05.001.0 | Neck | Scharnier | 1 |
| 3 | 153840106-547.05.002.0 | Lever | Hebel schw. | 1 |
| 4 | 153739903-546.00.101.0 | Hydraulic cylinder | Hydraulik Zylinder | A1,B1 |
| 4 | 153927004-547.05.006.0 | Hydraulic cylinder | Hidraulik | C1,D1 |
| 5 | 153846501-547.05.021.0 | Link welded | Verbindung schw. | 1 |
| 6 | 151025714-510.05.041.1 | Protector | Sicherung | 1 |
| 7 | 153679905-546.05.016.0 | Cap | Siegerungskappe | 1 |
| 8 | 153885709-547.06.023.0 | Link 2 | Verbindung 2 | 1 |
| 9 | 151026302-510.05.046.0 | Limitateur | Distanzrohr | 1 |
| 10 | 151026400-510.05.047.0 | Distance sleeve | Distanzbüchse | 1 |
| 11 | 151026507-TN 03 | Distance sleeve | Distanzbüchse | 1 |
| 12 | 151026605-510.05.049.0 | Sleeve | Büchse | 1 |
| 13 | 151026703-TN 01 | Washer | Scheibe | 2 |
| 14 | 151026801-510.05.051.0 | Bolt | Bolzen | 1 |
| 15 | 152663308-156.03.021.0 | Bolt | Bolzen | 1 |
| 16 | 153618801-546.05.007.0 | Bolt 5 | Bolzen 5 | A1 |
| 16 | 153927102-547.05.010.0 | Bolt 5 | Bolzen 5 | B1 |
| 17 | 152593009-502.11.035.0 | Bolt | Bolzen | 1 |
| 18 | 152088207-457.07.096.0 | Bolt | Bolzen | 1 |
| 19 | 152737222-516.05.055.2 | Bolt | Bolzen | 1 |
| 20 | 151027409-510.05.056.0 | Spring | Zugfeder | 1 |
| 21 | 152903709-516.00.020.0 | Chain | Kette kpl. | 1 |
| 22 | 151027604-510.05.057.0 | Plastic sleeve | Elastikbüchse | 2 |
| 23 | 150272403- | Protection pin | Sicherungstikt | 1 |
| 24 | 151027800-TN 01 | Washer | Scheibe | 1 |
| 25 | 152448711-516.05.052.1 | Bolt | Bolzen | 1 |
| 26 | 152010807-516.05.026.0 | Limitateur | Distanzrohr | 1 |
| 27 | 152011003-516.05.032.0 | Hook | Haken schw. | 1 |
| 28 | 152011405-516.05.037.0 | Bolt | Bolzen | 1 |
| 29 | 150296708-152.06.039.0 | String | Schnur | 1 |
| 30 | 151121002-M39.06.00.22 | Spring | Feder | 1 |
| 31 | 152011600-516.05.040.0 | Tube | Rohr | 1 |
| 32 | 152011708-516.05.043.0 | Eye | Ohr schw. | 3 |
| 33 | 152926203-516.05.054.0 | Chain | Kette kpl. | 1 |
| 34 | 150019401 | Clamp 9/11 | Klemme 9/11 | 2 |
| 35 | 150288600 | Screw M10x85 Zn | Schraube M10x85 Zn | 1 |
| 36 | 150288708 | Screw M10x95 Zn | Schraube M10x95 Zn | 1 |
| 37 | 150008100 | Screw M10x40 8.8 | Schraube M10x40 8.8 | 1 |
| 38 | 150146005 | Screw M10x30 8.8 Zn | Schraube M10x30 8.8 Zn | 2 |
| 39 | 000250702 | Nut M10 | Mutter M10 | 2 |
| 40 | 000221307 | Nut M10 | Mutter M10 | 1 |
| 41 | 150040208 | Nut M16 | Mutter M16 | 3 |
| 42 | 000228300 | Washer B10 | Scheibe B10 | 1 |
| 43 | 000228701 | Washer B16 | Scheibe B16 | 1 |
| 44 | 000240509 | Cotter 5x63 | Splinte 5x63 | 1 |
| 45 | 000239904 | Cotter 5x32 | Splinte 5x32 | 1 |
| 46 | 000239101 | Cotter 4x32 | Splinte 4x32 | 4 |
| 47 | 000238004 | Circlip 60 | Gimerungsring 60 | 1 |
| 48 | 000235007 | Pin 10x40 | Spannhülse10x40 | 1 |
| 49 | 150116305 | Pin 8x30 | Spannhülse 8x30 | 1 |
| 50 | 152237500-800.06.057.0 | Washer 25,2/33-1,5 | Scheibe 25,2/33-1,5 | 1 |
| 51 | 000240402 | Cotter 5x50 | Splinte 5x50 | 1 |
| 52 | 150037800 | Reduction unit | Reduktor | 1 |
| 53 | 000252906 | Washer A22x27 | Scheibe A22x27 | 1 |
| 54 | 150108403 | Clamp AMD M22x1,5 | Klemme AMD M22x1,5 | 1 |
| 55 | 150385504 | TubeV1NP8x3150A10A20 | RohrV1 NP8x3150 A10A20 | 1 |
| 56 | 151034615-511.05.010.1 | Cover | Deckel | 1 |
| 57 | 152448613-516.05.051.1 | Bolt | Bolzen | 1 |
| 58 | 154005604-547.05.017.0 | Bar | Welle | 1 |

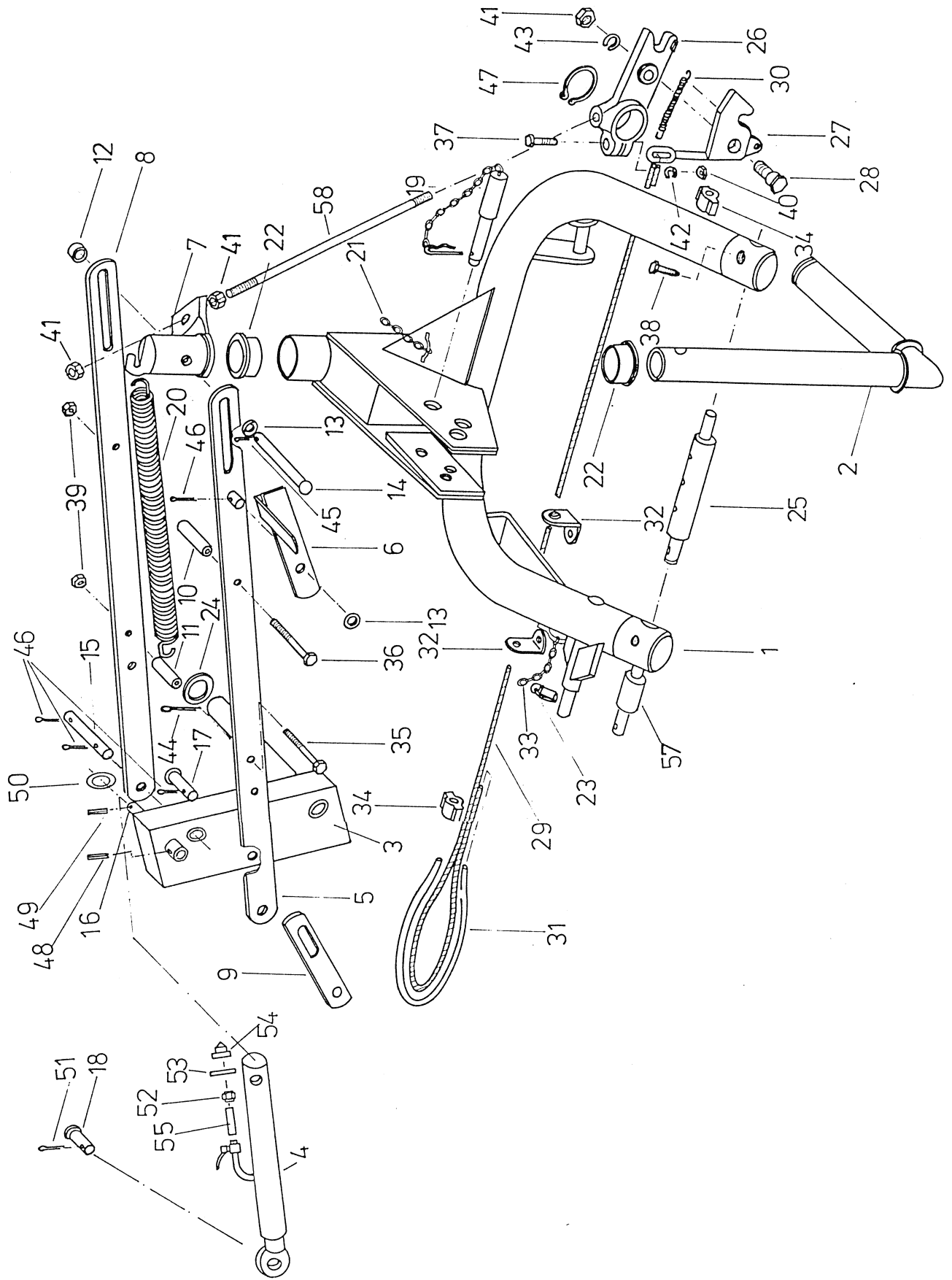
A = ROTO 175 D, 215 D

B = ROTO 255 D, 295 D

Bild A

Fig A

Bild A
Fig A

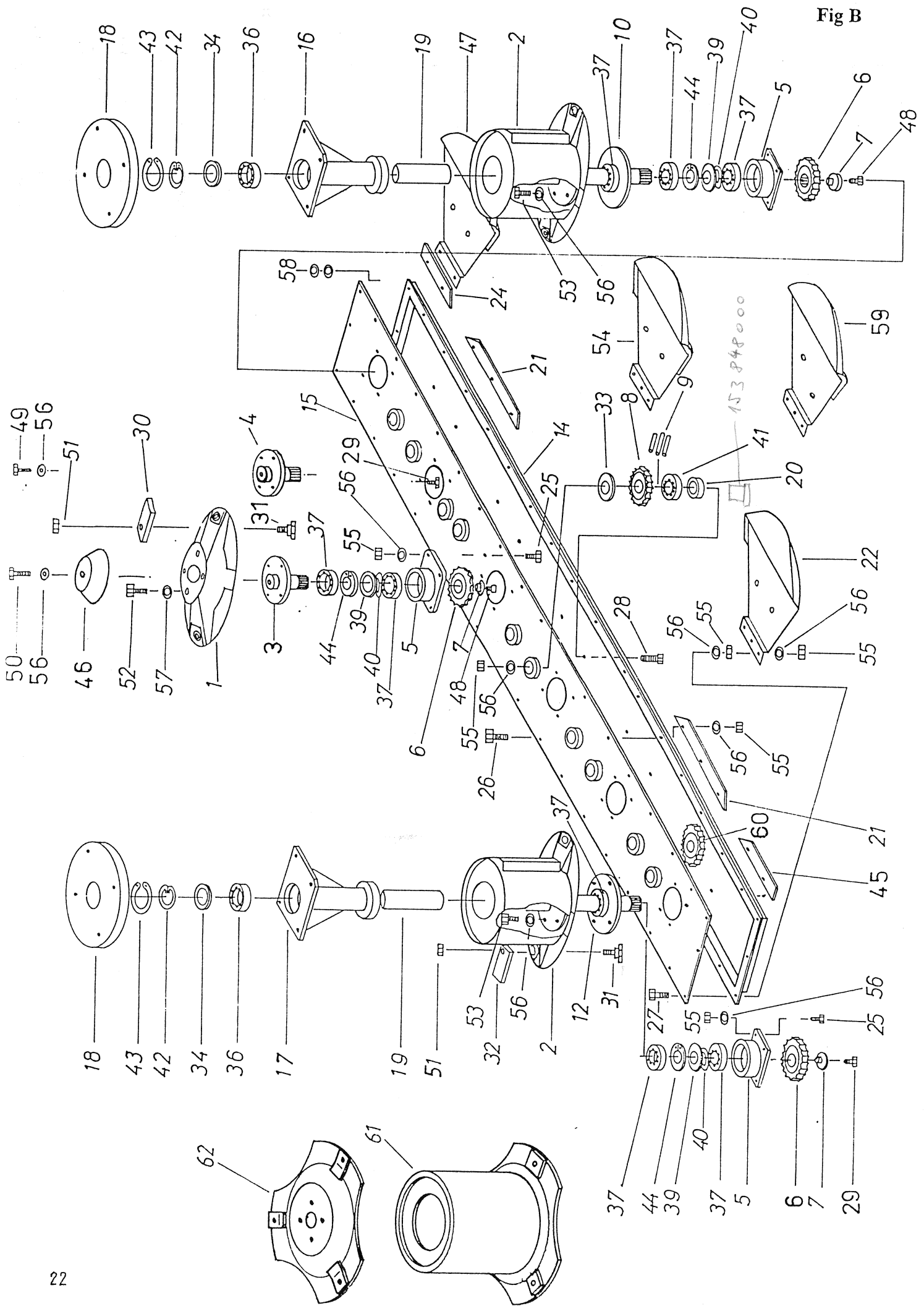


| No.on the figure Numer anzeichn. | Catalogue no. Katalog nummer | Description | Benennung | Quantity Stück |
|----------------------------------|------------------------------|----------------------|---------------------------|------------------------|
| 1 | 153844503-547.03.001.0 | Disc welded | Scheibe schw. | A2,B3,C4,5D |
| 2 | 153844709-547.03.003.0 | Disc welded | Scheibe schw. | A2,B2,C2,D5 |
| 3 | 153934015-547.03.018.1 | Flange right | Flansche recht | A1,B1,C2,D2 |
| 4 | 153845229-547.03.021.2 | Flange left | Flansche links | A1,B2,C2,D3 |
| 5 | 153845502-547.03.024.0 | Bearing Housing | Lagergehäuse schw. | A4,B5,C6,D7 |
| 6 | 153886111-547.03.039.1 | Gear 29/4 | Zahnrad 29/4 | A4,B5,C6,D7 |
| 7 | 153845806-547.03.027.0 | Washer | Scheibe | A4,B5,C6,D7 |
| 8 | 153846002-547.03.029.0 | Gear 34/4 | Zahnrad 34/4 | A6,B6,C10,D |
| 9 | 152148303-520.01.045.0 | Protection wire | Sicherungsdraht | A18,B18,C30,D30 |
| 10 | 153846208-547.03.031.0 | Shaft 1 | Welle schw. | A1,B1,C1,D1 |
| 12 | 153846815-547.03.037.1 | Shaft 2 | Welle 2 schw. | A1,B1,C1,D1 |
| 14 | 153847500-547.03.040.0 | Housing | Troggehäuse schw. | C1 |
| 14 | 153936415-549.03.040.1 | Housing | Troggehäuse schw. | A1 |
| 14 | 153938706-548.03.040.0 | Housing | Troggehäuse schw. | B1 |
| 14 | 153940614-550.03.040.1 | Housing | Troggehäuse schw. | D1 |
| 15 | 153847804-547.03.043.0 | Cover | Trogdeckel schw. | C1 |
| 15 | 153936600-549.03.043.0 | Cover | Trogdeckel schw. | A1 |
| 15 | 153938902-548.03.043.0 | Cover | Trogdeckel schw. | B1 |
| 15 | 153940810-550.03.043.0 | Cover | Trogdeckel schw. | C1 |
| 16 | 153848108-547.03.046.0 | Neck | Scharnier schw. | A1,B1,C1,D1 |
| 17 | 153848402-547.03.049.0 | Neck | Scharnier schw. | A1,B1,C1,D1 |
| 18 | 153848607-547.03.068.0 | Cover | Deckel | A2,B2,C2,D2 |
| 19 | 153848509-547.03.066.0 | Tube | Rohr | A2,B2,C2,D2, |
| 20 | 153860101-547.03.081.0 | Sleeve | Büchse | A6,B9,C10,D13 |
| 21 | 153934201-547.03.101.0 | Band | Band | A2,B3,C4,D5 |
| 22 | 153934612-547.03.105.1 | Slider | Schieberlager recht schw. | A1,C1 |
| 24 | 153934309-547.03.102.0 | Band | Band | A1,B1,C1,D1 |
| 25 | 153860600-547.03.088.0 | Screw 5 | Schraube 5 | A16,B20,C24,D28 |
| 26 | 153860708-547.03.089.0 | Screw 7 M10x25 | Schraube 7 M10x25 | A16,B21,C22,D27 |
| 27 | 153860806-547.03.089.0 | Screw M10x35 | Schraube 7 M10x35 | A12,B15,C18,D21 |
| 28 | 153860904-547.03.089.0 | Screw 7 M10x40 | Schraube 7 M10x40 | A6,B9,C10,D13 |
| 29 | 150393309 | Screw M10x20 | Schraube M10x20 | A2,B3,C3,D4 |
| 30 | 153171419-534.01.010.1 | Knife right | Messer recht | A4,B4,C6,D6,E6,F9 |
| 31 | 154005506 | Screw knife | Schraube messer | A8,B10,C12,D14,E12,F18 |
| 32 | 153171311-534.01.008.1 | Knife left | Messer links | A4,B6,C6,D8,E6,F9 |
| 33 | 151159506-166.813 | Washer 35,2/46,1 | Scheibe 35,2/46,1 | A6,B9,C10,D13 |
| 34 | 151014208-TN 01 | Washer 30,2/38-1 | Scheibe 30,2/38-1 | A2,B2,C2,D2 |
| 36 | 000243105 | Bearing KR 6202 2 RS | Lager KR 6202 2 RS | A2,B2,C2,D2 |
| 37 | 159165404 | Bearing KR 6307 2 RS | Lager KR 6307 2 RS | A10,B12,C14,D16 |
| 39 | 151002202-TN 01 | Washer 35,2/46-2 | Scheibe 35,2/46-2 | A4,B5,C6,D7 |
| 40 | 151020102-TN 01 | Washer 35,2/43-0,7 | Scheibe 35,2/43-0,7 | A4,B5,C6,D7 |
| 41 | 150158705 | Bearing 6207-2 RSN | Lager 6207-2 RSN | A6,B9,C10,D13 |
| 42 | 000236300 | Circlip N62 | Gimerungsring 62 | A2,B2,C2,D2 |
| 43 | 150383506 | Circlip 30x2 | Gimerungsring 30x2 | A2,B2,C2,D2 |
| 44 | 150048709 | Circlip 80 | Gimerungsring 80 | A4,B5,C6,D7 |
| 45 | 153934700-547.03.102.0 | Band right | Band recht | A1,B1,C1,D1 |
| 46 | 153912207-547.03.091.0 | Cover | Deckel schw. | A2,B3,C4,D5 |
| 47 | 153934514 -547.03.104.1 | Slider | Schieber | A1,B1,C1,D1 |
| 48 | 150384300 | Screw M10x20 | Schraube M10x20 | A2,B2,C3,D3 |
| 49 | 000210701 | Screw M10x30 8.8 Zn | Schraube M10x30 8.8 Zn | A1,B2,C2,D3 |
| 50 | 150393407 | Screw M10x30 8.8 Zn | Schraube M10x30 8.8 Zn | A1,B1,C2,D2 |
| 51 | 150084009 | Nut M10 | Mutter M10 | A8,B10,C12,D14,E12,F18 |
| 52 | 159444504 | Screw M12x20 | Schraube M12x20 | A8,B12,C16,D20 |
| 53 | 000210300 | Screw M10x25 | Schraube M10x25 | A8,B8,C8,D8 |
| 54 | 153860317-547.03.083.1 | Slider | Schieber schw. | A2,B2,C4,D4 |
| 55 | 000221307 | Nut M10 8 Zn | Mutter M10 8 Zn | A64,B77,D90,C103 |
| 56 | 000228408 | Washer B10 Zn | Scheibe B10 Zn | A76,B89,C102,D115 |
| 57 | 000228603 | Washer B12 Zn | Scheibe B12 Zn | A8,B12,C16,D20 |
| 58 | 000224206 | Washer A10 | Scheibe A10 | A8,B8,C8,D8 |
| 59 | 153941300-548.03.107.0 | Slider | Schieber schw. | B1,D1 |
| 60 | 153938608-548.03.030.0 | Gear | Zahnrad | B3,D3 |
| 61 | 154035608-547.15.001.0 | Disc welded | Scheibe schw. | E2,F2 |
| 62 | 154035804-547.15.003.0 | Disc welded | Scheibe schw. | E2,F4 |

A = ROTO 175 D
B = ROTO 215 D
C = ROTO 255 D
D = ROTO 295 D
E = ROTO 170 D ZDA
F = ROTO 260 D ZDA

Bild B Fig B

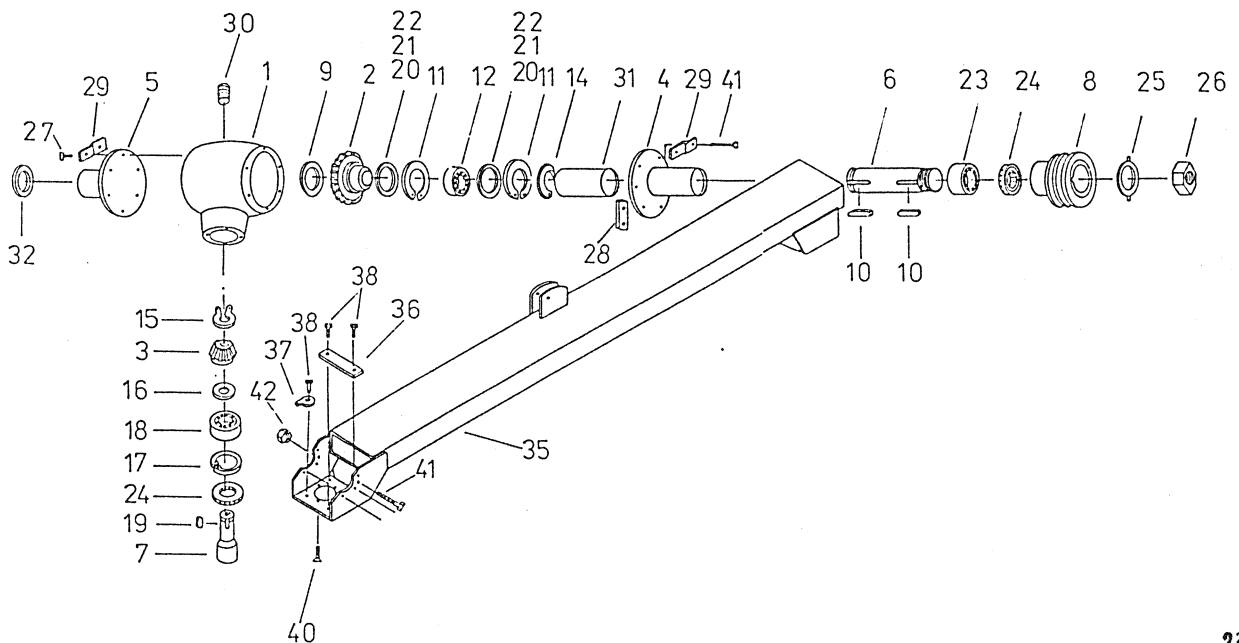
Bild B
Fig B



| No.on the figure Numer anzeichn. | Catalogue no. Katalog nummer | Description | Benennung | Quantity Stück |
|--|---------------------------------|-------------------------|------------------------------|-------------------|
| 1 | 153849009-547.03.051.0 | Gear-box housing | Sntriebsgehäuse | 1 |
| 2 | 153849107-547.03.052.0 | Pinion 30/4 | Kegelrad 30/4 | 1 |
| 3 | 153849205-547.03.053.0 | Pinion 16/4 | Kegelrad 16/4 | 1 |
| 4 | 153849313-547.03.054.1 | Flange 1 | Flansche 1 schw.K | 1 |
| 5 | 153849518-547.03.057.1 | Flange 2 | Flansche 2 schw. | 1 |
| 6 | 153849704-547.03.059.0 | Shaft | Welle | 1 |
| 7 | 153849812-547.03.060.1 | Shaft | Welle schw. | 1 |
| 8 | 152170108-520.02.017.0 | Pulley | Keilremenscheibe | 1 |
| 9 | 151012406-455.05.055.0 | Elastic ring A30 | Elastikring A30 | 1 |
| 10 | 000230707 | Key A8x7x45 | Dübel A8x7x45 | 2 |
| 11 | 159908102 | Circlip N85 | Gimmerungsring N85 | 2 |
| 12 | 150008306 | Bearing KR 6209 | Lager KR 6209 | 1 |
| 14 | 000237906 | Circlip 45 | Gimmerungsring 45 | 1 |
| 15 | 000237407 | Circlip 25 | Gimmerungsring 25 | 1 |
| 16 | 151012905-TN 01 | Washer 25,2/33 | Scheiben 25,2/33 | 1 |
| 17 | 000236300 | Circlip N62 | Gimmerungsring N62 | 1 |
| 18 | 000242909 | Bearing KR 6305 2 RS | Lager KR 6305 2 RS | 1 |
| 19 | 150135008 | Key B8x7x28 | Dübel B8x7x28 | 1 |
| 20 | 152497809-453.01.012.0 | Washer 45/56-0,2 | Scheibe 45/56-0,2 | 2 |
| 21 | 152497907-453.01.012.0 | Washer 45/56-0,3 | Scheibe 45/56-0,3 | 2 |
| 22 | 150307108-P166.830 | Washer 45/54-1 | Scheibe 45/54-1 | 2 |
| 23 | 150004505 | Bearing KR 4206 N625 | Lager KR 4206 N625 | 1 |
| 24 | 150004408-SIMRIT | Oil seal A45x62x7N 3760 | Dichtungsring A45x62x7N 3760 | 3 |
| 25 | 151002300-510.01.019.0 | Washer | Sicherungsscheibe | 1 |
| 26 | 151002408-455.05.051.0 | Nut M30x1,5 | Mutter M30x1,5 | 1 |
| 27 | 000210202 | Screw M10x25 | Schraube M10x25 | 6 |
| 28 | 153850201-547.03.064.0 | Protection plate 1 | Sicherungsblech 1 | 2 |
| 29 | 153850309-547.03.065.0 | Protection plate 2 | Sicherungsblech 2 | 2 |
| 30 | 150230306 | Screw locking M18x1,5 | Sicherungsschraube M18x1,5 | 1 |
| 31 | 153850103-547.03.063.0 | Sleeve 1 | Büchse 1 | 1 |
| 32 | 153848803-547.03.080.0 | Washer | Scheibe | 1 |
| 35 | 153850407-547.03.070.0 | Holder welded | Träger | C1 |
| 35 | 153936806-549.03.070.0 | Holder welded | Träger | A1 |
| 35 | 153939108-548.03.070.0 | Holder welded | Träger | B1 |
| 35 | 153941006-550.03.070.0 | Holder welded | Träger | D1 |
| 36 | 153848705-547.03.069.0 | Plate | Blechscheibe | 3 |
| 37 | 150386004 | Washer 12 Zn | Scheibe 12 Zn | 2 |
| 38 | 150087202 | Screw M12x25 8.8 Zn | Schraube M12x25 8.8 Zn | 8 |
| 40 | 150386102 | Screw M10x25 8.8 Zn | Schraube M10x25 8.8 Zn | 4 |
| 41 | 150389706 | Screw M12x190 10.9 Zn | Schraube M12x190 10.9 Zn | 3 |
| 42 | 150393602 | Nut M12 8 Zn | Mutter M12 8 Zn | 3 |

A = ROTO 175 D
B = ROTO 215 D
C = ROTO 255 D
D = ROTO 295 D

Bild C Fig C

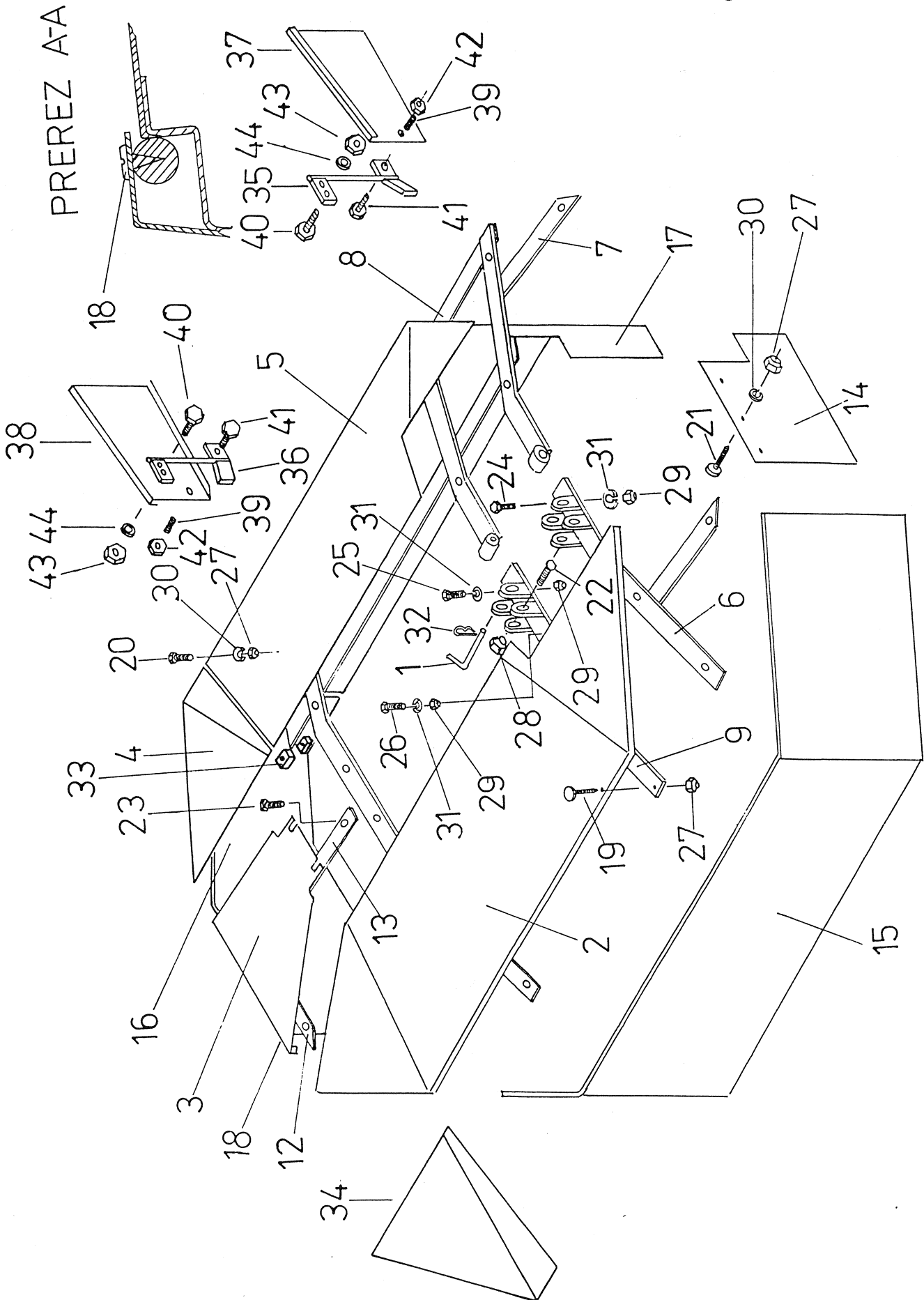


| No.on the figure Numer anzeichn. | Catalogue no. Katalog nummer | Description | Benennung | Quantity Stück |
|--|---------------------------------|----------------------|-------------------------|-------------------|
| 1 | 153844406-547.00.046.0 | Bolt | Bolzen | A2,B2,C3,D3 |
| 2 | 153937100-549.00.015.0 | Front cover plate | Blech vorne schw. | A1,B1 |
| 2 | 153841506-547.00.015.0 | Front cover plate | Blech vorne schw. | C1 |
| 2 | 153940301-550.00.015.0 | Front cover plate | Blech vorne schw. | D1 |
| 3 | 153841908-547.00.019.0 | Side cover plate | Blech seiten | A1,B1,C1,D1 |
| 4 | 153842202-547.00.022.0 | Cover plate | Blech schw. | A1,C1, |
| 4 | 153939607-548.00.020.0 | Cover plate | Blech schw. | B1,D1 |
| 5 | 153937404-549.00.025.0 | Cover plate | Blech schw. | A1,B1 |
| 5 | 153842505-547.00.025.0 | Cover plate | Blech schw. | C1,D1 |
| 6 | 153842809-547.00.030.0 | Kink 1 | Verbindung schw. 1 | A1,B1,C1,D1 |
| 7 | 153843602-547.00.038.0 | Link 5 | Verbindung schw. 5 | A1,B1,C1,D1 |
| 8 | 153937707-549.00.044.0 | Band 2 | Band 2 | A2,B2 |
| 8 | 153844200-547.00.044.0 | Band 2 | Band 2 | C2,D2 |
| 9 | 153842907-547.00.031.0 | Link 2 | Verbindung 2 | A1,B1,C2,D2 |
| 10 | 153843700-547.00.039.0 | Link 6 | Verbindung 6 | A1,B1,C2,D2 |
| 11 | 153843407-547.00.036.0 | Link 3 | Verbindung 3 | A1,B2,C1,D2 |
| 12 | 153843504-547.00.037.0 | Link 4 | Verbindung 4 | A1,B1,C1,D1 |
| 13 | 153844102-547.00.043.0 | Support 3 | Stütze 3 | A1,B1,C1,D1 |
| 14 | 153130007-P 499.045 | Curtain left | Sicherungsleine links | A1,B1,C1,D1 |
| 15 | 153953608-547.00.011.0 | Curtain front | Vorhang vorne | A1 |
| 15 | 153953706-547.00.011.0 | Curtain front | Vorhang vorne | B1 |
| 15 | 153841203-547.00.011.0 | Curtain front | Vorhang vorne | C1 |
| 15 | 153953804-547.00.011.0 | Curtain front | Vorhang vorne | D1 |
| 16 | 153841301-547.00.012.0 | Curtain side | Vorhang seitlich | A1,C1 |
| 16 | 153954206-547.00.012.0 | Curtain side | Vorhang seitlich | B1,D1 |
| 17 | 153955205-549.50.014.0 | Curtain rear | Vorhang hinten | A1 |
| 17 | 153956703-549.50.014.0 | Curtain rear | Vorhang hinten | B1 |
| 17 | 153841409-547.00.014.0 | Curtain rear | Vorhang hinten | C1 |
| 17 | 153956909-547.00.014.0 | Curtain rear | Vorhang hinten | D1 |
| 14 | 153934103-547.00.010.0 | Curtain left | Sicherungsleine links | A1,B1,C1,D1 |
| 15 | 153953902-547.00.011.1 | Curtain front | Vorhang vorne | A1 |
| 15 | 153954000-547.00.011.1 | Curtain front | Vorhang vorne | B1 |
| 15 | 153841213-547.00.011.1 | Curtain front | Vorhang vorne | C1 |
| 15 | 153954108-547.00.011.0 | Curtain front | Vorhang vorne | D1 |
| 16 | 153841311-547.00.012.1 | Curtain side | Vorhang seitlich | A1,C1 |
| 16 | 153954304-547.00.012.1 | Curtain side | Vorhang seitlich | B1,D1 |
| 17 | 153956106-549.54.014.1 | Curtain rear | Vorhang hinten | A1 |
| 17 | 153956801-549.54.014.1 | Curtain rear | Vorhang hinten | B1 |
| 17 | 153841419-547.00.014.1 | Curtain rear | Vorhang hinten | C1 |
| 17 | 153957007-547.00.014.1 | Curtain rear | Vorhang hinten | D1 |
| 18 | 150300301 | Screw A 4,2x13 | Schraube A 4,2x13 | A8,B8,B8,D8 |
| 19 | 150143008 | Screw M8x25 | Schraube M8x25 | A10,B14,C12,D16 |
| 20 | 150319809 | Screw M8x35 | Schraube M8x35 | A9,B9,C11,D11 |
| 21 | 000208509 | Screw M8x15 | Schraube M8x15 | A3,B3,C3,D3 |
| 22 | 000202505 | Screw M10x70 | Schraube M10x70 | A2,B2,C3,D3 |
| 23 | 000210701 | Screw M10x30 | Schraube M10x30 | A4,B4,C4,D4 |
| 24 | 150386308 | Screw M10x25 | Schraube M10x25 | A1,B1,C1,D1 |
| 25 | 150386200 | Screw M10x100 8.8 Zn | Schraube M10x100 8.8 Zn | A1,B1,C2,D2 |
| 26 | 150151007 | Screw M10x110 | Schraube M10x110 | A1,B3,C2,D4 |
| 27 | 150275302 | Nut V M8 | Mutter V M8 | A22,B26,C26,D30 |
| 28 | 000250702 | Nut M10 5 Cd | Mutter M10 5 Cd | A2,B3,C3,D3 |
| 29 | 000221307 | Nut M10 | Mutter M10 | A6,B9,C9,D11 |
| 30 | 151159908-TN 01 | Washer | Scheibe | A3,B3,C3,D3 |
| 31 | 000228408-250.00.002.0 | Washer B10 | Scheibe B10 | A9,B9,C9,D11 |
| 32 | 151322900 | Wire safety clamp | Sicherungsdraht | A2,B3,C3,D2 |
| 33 | 153932800-547.00.059.0 | Eye | Ohr | A4,B4,C4,D4 |
| 34 | 153937805-549.00.022.0 | Plate | Blech schw. | A1 |
| 34 | 153939705-548.00.022.0 | Plate | Blech schw. | B1,D1 |
| 35 | 153886307-547.00.062.0 | Holder right | Träger recht | A1,B1,C1,D1 |
| 36 | 153885905-547.00.050.0 | Holder left | Träger links | C1,D1 |
| 37 | 153886708-547.00.057.0 | Plate right | Blach recht | A1,B1,C1,D1 |
| 38 | 153886405-547.00.054.0 | Plate left | Blach links | C1,D1 |
| 39 | 151485002-590.05.228.0 | Spring | Feder | A1,B1,C2,D2 |
| 40 | 000248805 | Screw M12x35 | Schraube M12x35 | A2,B2,C4,D4 |
| 41 | 150388903 | Screw M14x75 | Schraube M14x75 | A1,B1,C2,D2 |
| 42 | 000250908 | Nut M14 | Mutter M14 | A1,B1,C2,D2 |
| 43 | 150160300 | Nut M12 | Mutter M12 | A2,B2,C4,D4 |
| 44 | 000228603 | Washer B12 | Scheibe B12 | A2,B2,C4,D4 |

A = ROTO 175 D
B = ROTO 215 D
C = ROTO 255 D
D = ROTO 295 D

Bild D
Fig D

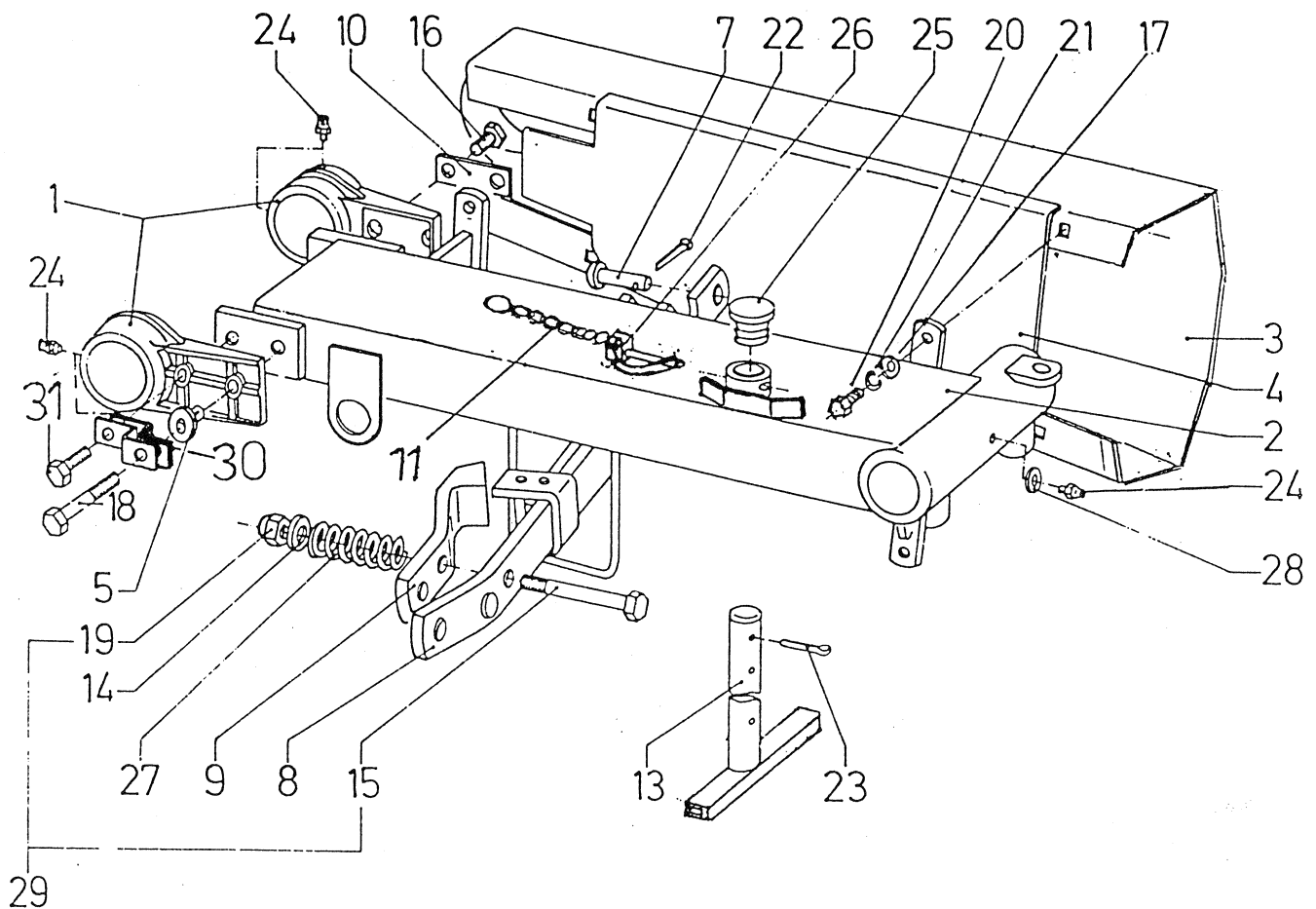
Bild D
Fig D



| No. on the figure Numer anzeichn. | Catalogue no. Katalog nummer | Description | Benennung | Quantity Stück |
|---|---------------------------------|---------------------|--------------------------------|-------------------|
| 1 | 151007001-510.02.044.0 | Neck | Schmier | 2 |
| 2 | 153839500-547.02.001.0 | Holder | Träger schw. | 1 |
| 3 | 153841007-547.02.021.0 | Protection | Sicherung schw. | 1 |
| 4 | 153840507-547.02.051.0 | Inner protection | Innensicherung | 1 |
| 5 | 151007207-510.02.045.0 | Sleeve | Büchse | 1 |
| 7 | 151007608-510.02.052.0 | Bolt 1 | Bolzen 1 | 1 |
| 8 | 153926700-547.02.025.0 | Safety clamp | Sicherung | 1 |
| 9 | 153621003-546.02.029.0 | Protector | Sicherungen | 1 |
| 10 | 151007403-510.02.047.0 | Protection plate | Sicherungsblech | 2 |
| 11 | 152903709-516.00.020.0 | Chain | Kette kpl. | 1 |
| 13 | 153926201-547.02.006.0 | Support leg | Stütz fuss | 1 |
| 14 | 153240102-TN 01 | Washer 15/50-4 Zn | Scheibe 15/50-04 | 1 |
| 15 | 150392809 | Screw M14x215 8.8 | Schraube M14x215 8.8 | 1 |
| 16 | 150104309 | Screw M16x30 8.8 Zn | Schraube M16x30 8.8 Zn | 2 |
| 17 | 000224304- | Washer A10 | Scheibe A10 | 4 |
| 18 | 150392701 | Screw M16x65 8.8 Zn | Sekskantschraube M16x65 8.8 Zn | 1 |
| 19 | 000250908 | Nut M14 5 Cd | Mutter M14 5 Cd | 1 |
| 20 | 000210300 | Screw M10x25 | Schraube M10x25 | 4 |
| 21 | 000228408 | Washer B10 Zn | Scheibe B10 Zn | 4 |
| 22 | 000239101 | Cotter 4x32 | Splint 4 x32 | 1 |
| 23 | 000240304 | Cotter 5x50 | Splint 5x50 | 1 |
| 24 | 000246503 | Lubricator | Schmirmippel | 5 |
| 25 | 151007922-510.02.054.2 | Cover | Deckel | 1 |
| 26 | 150392603-APRAM | Safety pin | Sicherungsstift | 1 |
| 27 | 153742007-546.02.065.0 | Spring | Feder | 1 |
| 28 | 000252808 | Washer A6x10 Cu | Scheibe | 2 |
| 29 | 153926808-547.02.024.0 | Protector | Sicherung kpl. | 1 |
| 30 | 153926103-547.02.030.0 | Band | Band | 1 |
| 31 | 000253807 | Screw M16x40 | Schraube M16x40 | 1 |

Bild E

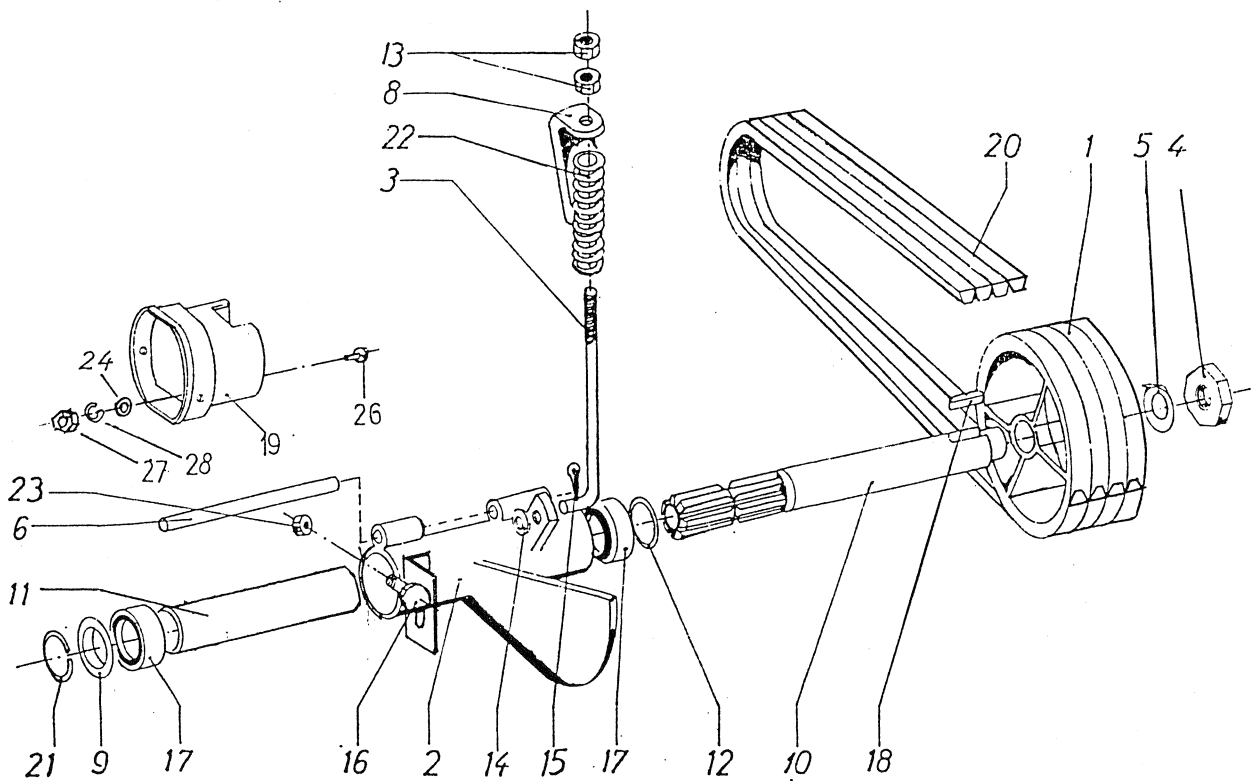
Fig E



| No.on the figure Numer anzeichn. | Catalogue no. Katalog nummer | Description | Benennung | Quantity Stück |
|--|---------------------------------|-------------------------|-----------------------|-------------------|
| 1 | 152162705-520.03.003.0 | Pulley | Keilrimenscheibe | 1 |
| 2 | 152005403-516.01.001.0 | Bearing housing | Lager gehäuse | 1 |
| 3 | 151001301-510.01.011.0 | Tensioner | Spanner | 1 |
| 4 | 153473903-455.05.051.0 | Nut M30x1,5 | Mutter M30x1,5 | 1 |
| 5 | 151002300-510.01.019.0 | Washer | Sicherungsscheibe | 1 |
| 6 | 152005628-516.01.004.2 | Bolt | Bolzen | 1 |
| 8 | 151001506-510.01.013.0 | Support | Lehne | 1 |
| 9 | 151002006-510.01.018.0 | Cover | Deckel | 1 |
| 10 | 153839804-547.01.008.0 | Shaft | Antriebswelle | 1 |
| 11 | 151001908-510.01.017.0 | Distance tube | Distanzrohr | 1 |
| 12 | 151002202-TN01 | Washer | Scheibe | 1 |
| 13 | 000221904 | Nut M16 5 | Mutter M16 5 | 2 |
| 14 | 000224803 | Washer A16 | Scheibe A16 | 1 |
| 15 | 000239101 | Cotter 4x32 | Splint 4x32 | 1 |
| 16 | 150000509 | Screw M6x55 8.8 | Schraube M6x55 8.8 Zn | 1 |
| 17 | 000243908 | Bearing 6207 2 RS | Lager 6207 2 RS | 2 |
| 18 | 000230805 | Key A 8x7x50 | Bolzen A 8x7x50 | 1 |
| 19 | 153996901-516.01.025.0 | P.T.O. Shaft protection | Gelenkwellesicherung | 1 |
| 20 | 150390008 | Vee belt SPBx2950 | Keilrimmen | 4 |
| 21 | 151002104-455.04.043.0 | Elastic ring A35 | Elastikring A35 | 1 |
| 22 | 153742007-546.02.065.0 | Spring 1 | Feder 1 | 1 |
| 23 | 000250506 | Nut M6 | Mutter M6 | 1 |
| 24 | 000225900 | Washer C10 | Scheibe C10 | 2 |
| 26 | 150106806 | Screw M10x20 8.8 Zn | Schraube M10x20 8.8 | 2 |
| 27 | 000221307 | Nut M10 8 Zn | Mutter M10 8 Zn | 2 |
| 28 | 000225303 | Washer 10 | Scheibe 10 | 2 |

Bild F

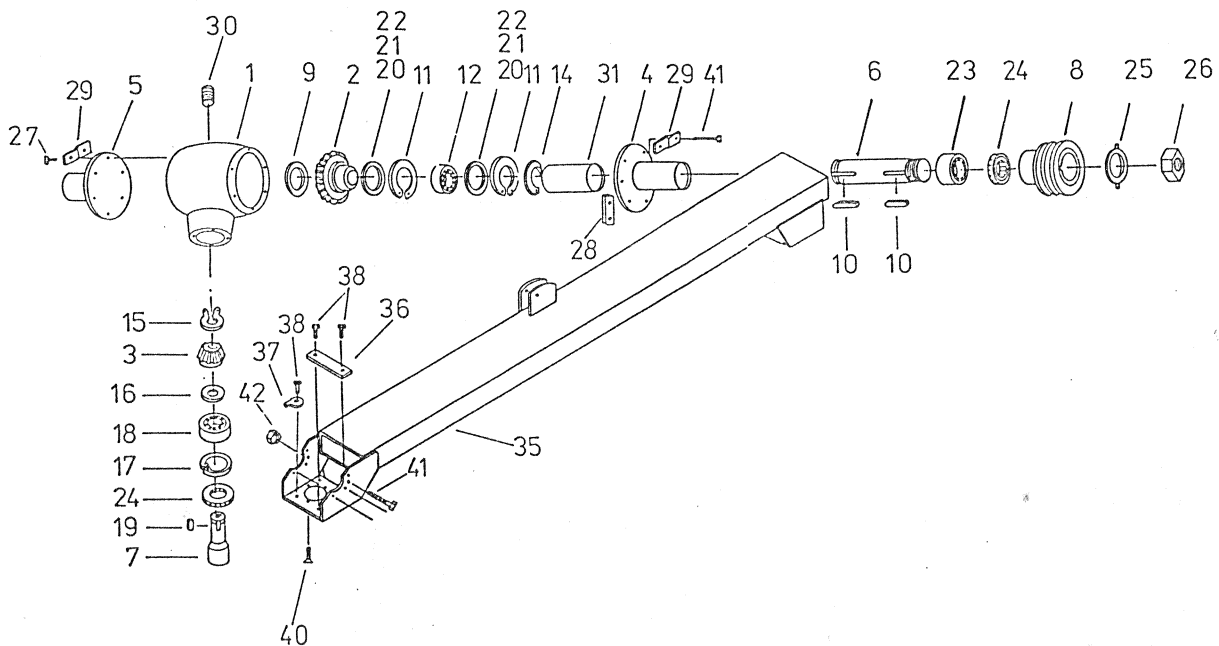
Fig F



| No.on the figure Numer anzeichn. | Catalogue no. Katalog nummer | Description | Benennung | Quantity Stück |
|--|---------------------------------|-------------------------|------------------------------|-------------------|
| 1 | 153849009-547.03.051.0 | Gear-box housing | Sntriebsgehäuse | 1 |
| 2 | 153849107-547.03.052.0 | Pinion 30/4 | Kegelrad 30/4 | 1 |
| 3 | 153849205-547.03.053.0 | Pinion 16/4 | Kegelrad 16/4 | 1 |
| 4 | 153849313-547.03.054.1 | Flange 1 | Flansche 1 schw.K | 1 |
| 5 | 153849518-547.03.057.1 | Flange 2 | Flansche 2 schw. | 1 |
| 6 | 153849704-547.03.059.0 | Shaft | Welle | 1 |
| 7 | 153849812-547.03.060.1 | Shaft | Welle schw. | 1 |
| 8 | 000242919 | Pulley | Keilremenscheibe | 1 |
| 9 | 151012406-455.05.055.0 | Elastic ring A30 | Elastikring A30 | 1 |
| 10 | 000230707 | Key A8x7x45 | Dübel A8x7x45 | 2 |
| 11 | 159908102 | Circlip N85 | Gimmerungsring N85 | 2 |
| 12 | 150008306 | Bearing KR 6209 | Lager KR 6209 | 1 |
| 14 | 000237906 | Circlip 45 | Gimmerungsring 45 | 1 |
| 15 | 000237407 | Circlip 25 | Gimmerungsring 25 | 1 |
| 16 | 151012905-TN 01 | Washer 25,2/33 | Scheiben 25,2/33 | 1 |
| 17 | 000236300 | Circlip N62 | Gimmerungsring N62 | 1 |
| 18 | 000242919 | Bearing KR 6305 2 RS | Lager KR 6305 2 RS | 1 |
| 19 | 150401319 | Key B8x7x28 | Dübel B8x7x28 | 1 |
| 20 | 152497809-453.01.012.0 | Washer 45/56-0,2 | Scheibe 45/56-0,2 | 2 |
| 21 | 152497907-453.01.012.0 | Washer 45/56-0,3 | Scheibe 45/56-0,3 | 2 |
| 22 | 150307108-P166.830 | Washer 45/54-1 | Scheibe 45/54-1 | 2 |
| 23 | 150004505 | Bearing KR 4206 N625 | Lager KR 4206 N625 | 1 |
| 24 | 150004408-SIMRIT | Oil seal A45x62x7N 3760 | Dichtungsring A45x62x7N 3760 | 3 |
| 25 | 151002300-510.01.019.0 | Washer | Sicherungsscheibe | 1 |
| 26 | 151002408-455.05.051.0 | Nut M30x1,5 | Mutter M30x1,5 | 1 |
| 27 | 000210202 | Screw M10x25 | Schraube M10x25 | 6 |
| 28 | 153850201-547.03.064.0 | Protection plate 1 | Sicherungsblech 1 | 2 |
| 29 | 153850309-547.03.065.0 | Protection plate 2 | Sicherungsblech 2 | 2 |
| 30 | 150230306 | Screw locking M18x1,5 | Sicherungsschraube M18x1,5 | 1 |
| 31 | 153850103-547.03.063.0 | Sleeve 1 | Büchse 1 | 1 |
| 35 | 153850407-547.03.070.0 | Holder welded | Träger | C1 |
| 35 | 153936806-549.03.070.0 | Holder welded | Träger | A1 |
| 35 | 153939108-548.03.070.0 | Holder welded | Träger | B1 |
| 35 | 153941006-550.03.070.0 | Holder welded | Träger | D1 |
| 36 | 153848705-547.03.069.0 | Plate | Blechscheibe | 3 |
| 37 | 150386004 | Washer 12 Zn | Scheibe 12 Zn | 2 |
| 38 | 150087202 | Screw M12x25 8.8 Zn | Schraube M12x25 8.8 Zn | 8 |
| 40 | 150386102 | Screw M10x25 8.8 Zn | Schraube M10x25 8.8 Zn | 4 |
| 41 | 150389706 | Screw M12x190 10.9 Zn | Schraube M12x190 10.9 Zn | 3 |
| 42 | 150393602 | Nut M12 8 Zn | Mutter M12 8 Zn | 3 |

A = ROTO 175 D
B = ROTO 215 D
C = ROTO 255 D
D = ROTO 295 D

Bild C Fig C



| No. on the figure Numer anzeichn. | Catalogue no. Katalog nummer | Description | Benennung | Quantity Stück |
|---|---------------------------------|---------------------|------------------------|-------------------|
| 1 | 153844406-547.00.046.0 | Bolt | Bolzen | A2,B2,C3,D3 |
| 2 | 153937100-549.00.015.0 | Front cover plate | Blech vorne schw. | A1,B1 |
| 2 | 153841506-547.00.015.0 | Front cover plate | Blech vorne schw. | C1 |
| 2 | 153940301-550.00.015.0 | Front cover plate | Blech vorne schw. | D1 |
| 3 | 153841908-547.00.019.0 | Side cover plate | Blech seiten | A1,B1,C1,D1 |
| 4 | 153842202-547.00.022.0 | Cover plate | Blech schw. | A1,B1,C1, |
| 4 | 153939607-548.00.020.0 | Cover plate | Blech schw. | D1 |
| 5 | 153937404-549.00.025.0 | Cover plate | Blech schw. | A1 |
| 5 | 154053204-548.00.025.0 | Cover plate | Blech schw. | C1,D1 |
| 5 | 154053204-548.00.025.0 | Cover plate | Blech schw. | B1 |
| 6 | 153842809-547.00.030.0 | Link 1 | Verbindung schw. 1 | A1,B1,C1,D1 |
| 7 | 153843602-547.00.038.0 | Link 5 | Verbindung schw. 5 | A1,B1,C1,D1 |
| 8 | 153937707-549.00.044.0 | Band 2 | Band 2 | A2 |
| 8 | 153844200-547.00.044.0 | Band 2 | Band 2 | C2,D2 |
| 8 | 154108502-548.00.044.0 | Link 6 | Verbindung 6 | B2 |
| 9 | 153842907-547.00.031.0 | Link 2 | Verbindung 2 | A1,B2,C2,D2 |
| 10 | 153843700-547.00.039.0 | Link 6 | Verbindung 6 | A1,B2,C2,D2 |
| 11 | 153843407-547.00.036.0 | Link 3 | Verbindung 3 | A1,B1,C1,D2 |
| 12 | 153843504-547.00.037.0 | Link 4 | Verbindung 4 | A1,B1,C1,D1 |
| 13 | 153844102-547.00.043.0 | Support 3 | Stütze 3 | A1,B1,C1,D1 |
| 14 | 153130007-P 499.045 | Curtain left | Sicherungsleine links | A1,B1,C1,D1 |
| 15 | 153953608-547.00.011.0 | Curtain front | Vorhang vorne | A1 |
| 15 | 153953706-547.00.011.0 | Curtain front | Vorhang vorne | B1 |
| 15 | 153841203-547.00.011.0 | Curtain front | Vorhang vorne | C1 |
| 15 | 153953804-547.00.011.0 | Curtain front | Vorhang vorne | D1 |
| 16 | 153841301-547.00.012.0 | Curtain side | Vorhang seitlich | A1,B1,C1 |
| 16 | 153954206-547.00.012.0 | Curtain side | Vorhang seitlich | D1 |
| 17 | 153955205-549.50.014.0 | Curtain rear | Vorhang hinten | A1 |
| 17 | 154053008-548.50.014.0 | Curtain rear | Vorhang hinten | B1 |
| 17 | 153841409-547.00.014.0 | Curtain rear | Vorhang hinten | C1 |
| 17 | 153956909-547.00.014.0 | Curtain rear | Vorhang hinten | D1 |
| 14 | 153934103-547.00.010.0 | Curtain left | Sicherungsleine links | A1,B1,C1,D1 |
| 15 | 153953902-547.00.011.1 | Curtain front | Vorhang vorne | A1 |
| 15 | 153954000-547.00.011.1 | Curtain front | Vorhang vorne | B1 |
| 15 | 153841213-547.00.011.1 | Curtain front | Vorhang vorne | C1 |
| 15 | 153954108-547.00.011.0 | Curtain front | Vorhang vorne | D1 |
| 16 | 153841311-547.00.012.1 | Curtain side | Vorhang seitlich | A1,B1,C1 |
| 16 | 153954304-547.00.012.1 | Curtain side | Vorhang seitlich | D1 |
| 17 | 153956106-549.54.014.1 | Curtain rear | Vorhang hinten | A1 |
| 17 | 154053106-548.54.014.0 | Curtain rear | Vorhang hinten | B1 |
| 17 | 153841419-547.00.014.1 | Curtain rear | Vorhang hinten | C1 |
| 17 | 153957007-547.00.014.1 | Curtain rear | Vorhang hinten | D1 |
| 18 | 150300301 | Screw A 4,2x13 | Schraube A 4,2x13 | A8,B8,B8,D8 |
| 19 | 150143008 | Screw M8x25 | Schraube M8x25 | A10,B14,C12,D16 |
| 20 | 150319809 | Screw M8x35 | Schraube M8x35 | A9,B9,C11,D11 |
| 21 | 000208509 | Screw M8x15 | Schraube M8x15 | A3,B3,C3,D3 |
| 22 | 150007003 | Screw M10x70 | Schraube M10x70 | A2,B3,C3,D3 |
| 23 | 000210701 | Screw M10x30 | Schraube M10x30 | A4,B4,C4,D4 |
| 24 | 150386308 | Screw M10x25 | Schraube M10x25 | A1,B1,C1,D1 |
| 25 | 150386200 | Screw M10x95 8.8 Zn | Schraube M10x95 8.8 Zn | A1,B2,C2,D2 |
| 26 | 150320405 | Screw M10x100 | Schraube M10x100 | A1,B2,C2,D4 |
| 27 | 150275302 | Nut V M8 | Mutter V M8 | A22,B26,C26,D30 |
| 28 | 000250702 | Nut M10 5 Cd | Mutter M10 5 Cd | A2,B3,C3,D3 |
| 29 | 000221307 | Nut M10 | Mutter M10 | A6,B9,C9,D11 |
| 30 | 151159908-TN 01 | Washer | Scheibe | A3,B3,C3,D3 |
| 31 | 000228408-250.00.002.0 | Washer B10 | Scheibe B10 | A9,B9,C9,D11 |
| 32 | 151322900 | Wire safety clamp | Sicherungsdraht | A2,B3,C3,D2 |
| 33 | 153932800-547.00.059.0 | Eye | Ohr | A4,B4,C4,D4 |
| 34 | 153937805-549.00.022.0 | Plate | Blech schw. | A1,C1 |
| 34 | 153939705-548.00.022.0 | Plate | Blech schw. | B1,D1 |
| 35 | 153885905-547.00.050.0 | Holder left | Träger links | C1,D1 |
| 36 | 153886307-547.00.062.0 | Holder right | Träger recht | A1,B1,C1,D1 |
| 37 | 153886405-547.00.054.0 | Plate left | Blach links | C1,D1 |
| 38 | 153886708-547.00.057.0 | Plate right | Blach recht | A1,B1,C1,D1 |
| 39 | 151485002-590.05.228.0 | Spring | Feder | A1,B1,C2,D2 |
| 40 | 000248805 | Screw M12x35 | Schraube M12x35 | A2,B2,C4,D4 |
| 41 | 150388903 | Screw M14x75 | Schraube M14x75 | A1,B1,C2,D2 |
| 42 | 000250908 | Nut M14 | Mutter M14 | A1,B1,C2,D2 |
| 43 | 150160300 | Nut M12 | Mutter M12 | A2,B2,C4,D4 |
| 44 | 000228603 | Washer B12 | Scheibe B12 | A2,B2,C4,D4 |

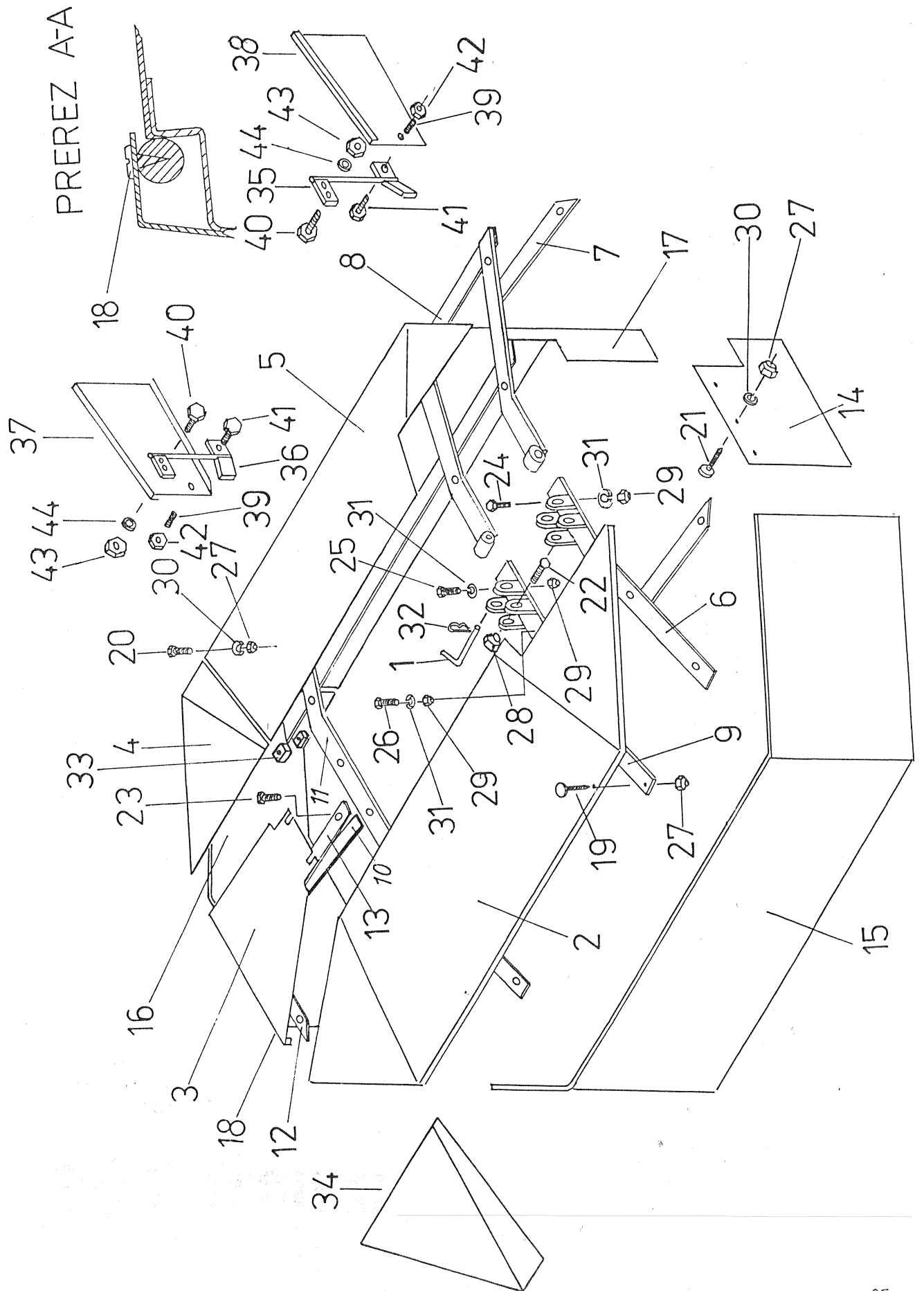
RAL 7021
 RAL 1021
 Schwarz-Black
 Gelb-Yellow

A = ROTO 175 D
 B = ROTO 215 D
 C = ROTO 255 D
 D = ROTO 295 D

Bild D

Fig D

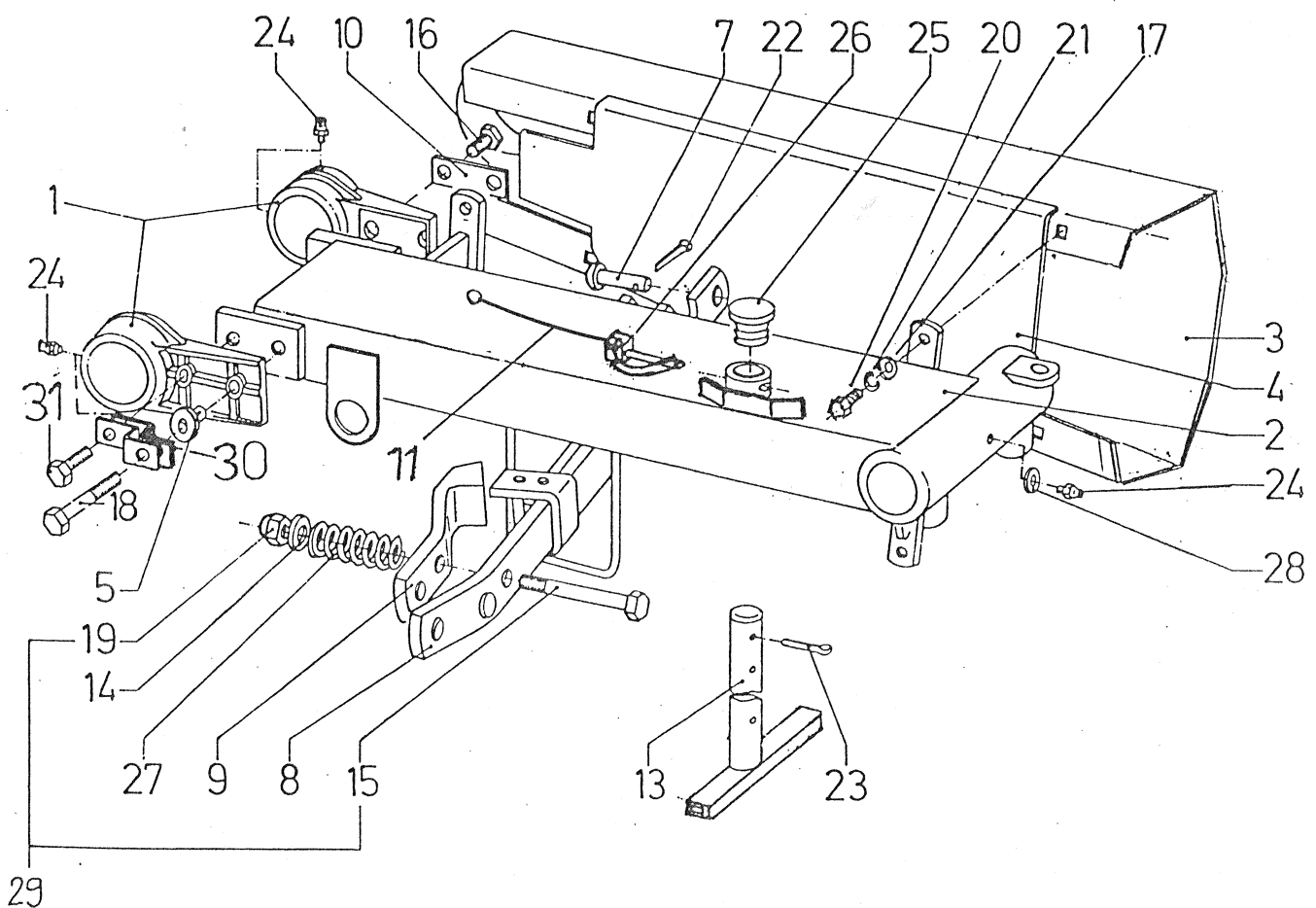
Bild D
Fig D



| No. on the figure Numer anzeichn. | Catalogue no. Katalog nummer | Description | Benennung | Quantity Stück |
|---|---------------------------------|----------------------|---------------------------------|-------------------|
| 1 | 151007001-510.02.044.0 | Neck | Schnier | 2 |
| 2 | 153839500-547.02.001.0 | Holder | Träger schw. | 1 |
| 3 | 153841007-547.02.021.0 | Protection | Sicherung schw. | 1 |
| 4 | 153840507-547.02.051.0 | Inner protection | Innensicherung | 1 |
| 5 | 151007207-510.02.045.0 | Sleeve | Büchse | 1 |
| 7 | 151007608-510.02.052.0 | Bolt 1 | Bolzen 1 | 1 |
| 8 | 154005409-547.02.027.0 | Safety clamp | Sicherung | 1 |
| 9 | 151726403-513.02.029.0 | Protector | Sicherungen | 1 |
| 10 | 151007403-510.02.047.0 | Protection plate | Sicherungsblech | 2 |
| 11 | 153245714-342.00.015.1 | String cpl. | Seile kpl. | 1 |
| 13 | 153926201-547.02.006.0 | Support leg | Stütz fuss | 1 |
| 14 | 153240102-TN 01 | Washer 15/50-4 Zn | Scheibe 15/50-04 | 1 |
| 15 | 150392809 | Screw M14x215 8.8 | Schraube M14x215 8.8 | 1 |
| 16 | 150104309 | Screw M16x30 12.9 Zn | Schraube M16x30 12.9 Zn | 2 |
| 17 | 000224304- | Washer A10 | Scheibe A10 | 4 |
| 18 | 150392701 | Screw M16x65 12.9 Zn | Sekskantschraube M16x65 12.9 Zn | 1 |
| 19 | 000250908 | Nut M14 5 Cd | Mutter M14 5 Cd | 1 |
| 20 | 000210300 | Screw M10x25 | Schraube M10x25 | 4 |
| 21 | 000228408 | Washer B10 Zn | Scheibe B10 Zn | 4 |
| 22 | 000239101 | Cotter 4x32 | Splint 4 x32 | 1 |
| 23 | 000240304 | Cotter 5x50 | Splint 5x50 | 1 |
| 24 | 000246503 | Lubricator | Schmirmippel | 5 |
| 25 | 151007922-510.02.054.2 | Cover | Deckel | 1 |
| 26 | 150392603-APRAM | Safety pin | Sicherungsstift | 1 |
| 27 | 154005409-547.02.027.0 | Spring | Feder | 1 |
| 28 | 000252808 | Washer A6x10 Cu | Scheibe | 2 |
| 29 | 153926818-547.02.024.1 | Protector | Sicherung kpl. | 1 |
| 30 | 153926103-547.02.030.0 | Band | Band | 1 |
| 31 | 000253807 | Screw M16x40 | Schraube M16x40 | 1 |

Bild E

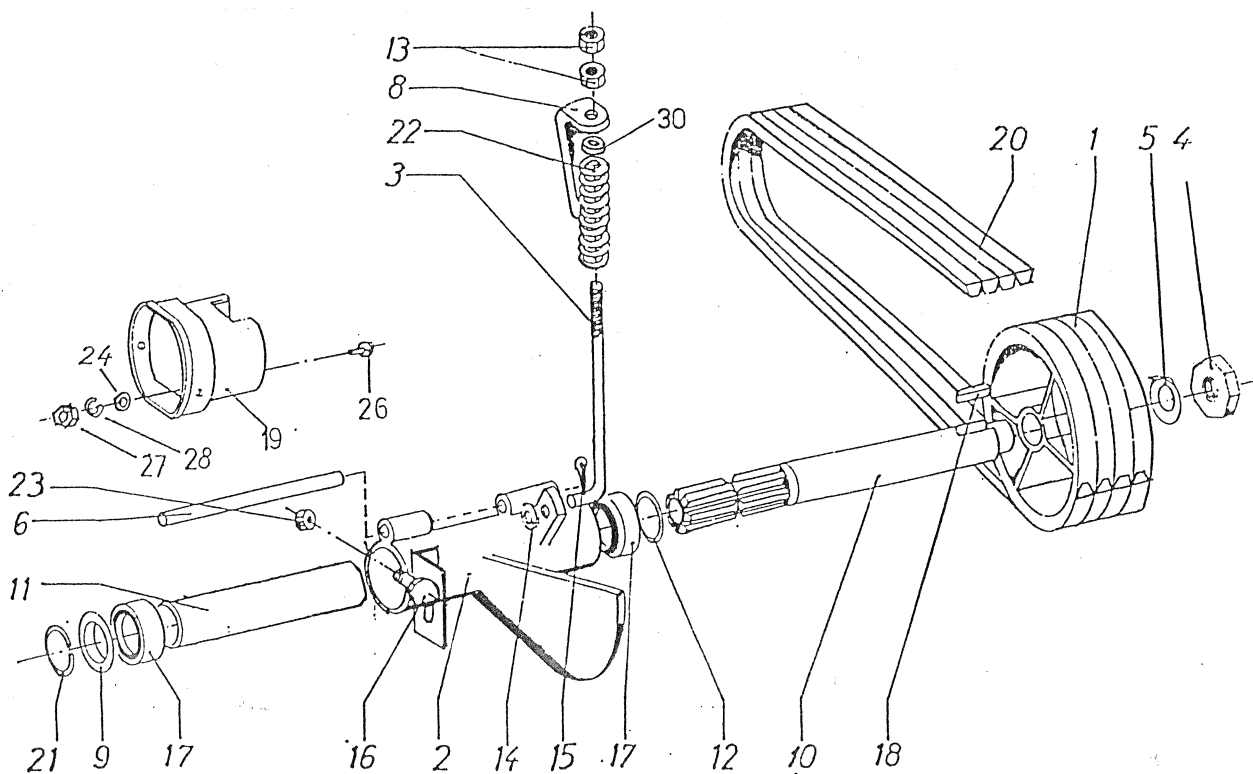
Fig E



| No.on the figure Numer anzeichn. | Catalogue no. Katalog nummer | Description | Benennung | Quantity Stück |
|--|---------------------------------|-------------------------|-----------------------|-------------------|
| 1 | 152162705-520.03.003.0 | Pulley | Keilrimenscheibe | 1 |
| 2 | 152005403-516.01.001.0 | Bearing housing | Lager gehäuse | 1 |
| 3 | 154045107-547.01.010.0 | Tensioner | Spanner | 1 |
| 4 | 153473903-455.05.051.0 | Nut M30x1,5 | Mutter M30x1,5 | 1 |
| 5 | 151002300-510.01.019.0 | Washer | Sicherungsscheibe | 1 |
| 6 | 152005628-516.01.004.2 | Bolt | Bolzen | 1 |
| 8 | 151001506-510.01.013.0 | Support | Lehne | 1 |
| 9 | 151002006-510.01.018.0 | Cover | Deckel | 1 |
| 10 | 153839804-547.01.008.0 | Shaft | Antriebswelle | 1 |
| 11 | 151001908-510.01.017.0 | Distance tube | Distanzrohr | 1 |
| 12 | 151002202-TN01 | Washer | Scheibe | 1 |
| 13 | 000221904 | Nut M16 5 | Mutter M16 5 | 2 |
| 14 | 000224803 | Washer A16 | Scheibe A16 | 1 |
| 15 | 000239101 | Cotter 4x32 | Splint 4x32 | 1 |
| 16 | 000254904 | Screw M6x45 8.8 Zn | Schraube M6x45 8.8 Zn | 1 |
| 17 | 000243908 | Bearing 6207 2 RS | Lager 6207 2 RS | 2 |
| 18 | 000230805 | Key A 8x7x50 | Bolzen A 8x7x50 | 1 |
| 19 | 152925312-516.01.011.1 | P.T.O. Shaft protection | Gelenkwellessicherung | 1 |
| 20 | 150390008 | Vee belt SPBx2950 | Keilrimmen | 4 |
| 21 | 151002104-455.04.043.0 | Elastic ring A35 | Elastikring A35 | 1 |
| 22 | 153742007-546.02.065.0 | Spring 1 | Feder 1 | 1 |
| 23 | 000250506 | Nut M6 | Mutter M6 | 1 |
| 24 | 000225900 | Washer C10 | Scheibe C10 | 2 |
| 26 | 150106806 | Screw M10x20 8.8 Zn | Schraube M10x20 8.8 | 2 |
| 27 | 000221307 | Nut M10 8 Zn | Mutter M10 8 Zn | 2 |
| 28 | 000225303 | Washer 10 | Scheibe 10 | 2 |
| 30 | 152364907-520.04.111.0 | Sleeve | Büchse | 1 |

Bild F

Fig F



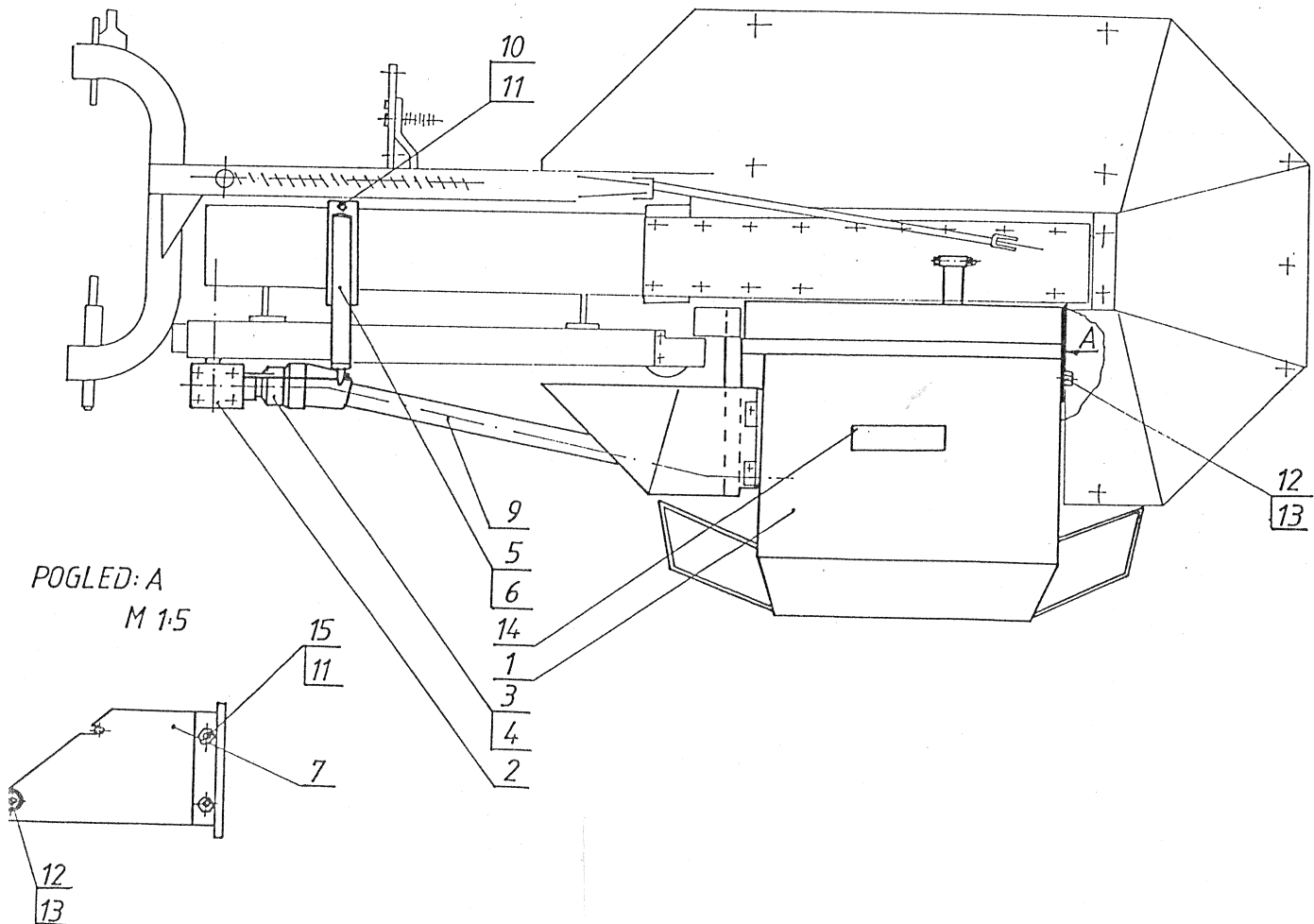
| No. on the figure Numer anzeichn. | Catalogue no. Katalog nummer | Benennung | Description | Quantity Stück |
|---|---------------------------------|---------------------------|-------------------------|-------------------|
| 1 | 154059306-549.07.001.0 | Aufbereiter | Conditioner | A1 |
| 1 | 154069705-548.07.001.0 | Aufbereiter | Conditioner | B1 |
| 2 | 154064504-548.08.000.0 | Getriebe des Aufbereiters | Conditioner gearbox | 1 |
| 3 | 151001614-510.01.014.1 | Gelenkwellesicherung | P.T.O. Shaft protection | 1 |
| 4 | 150134303 | Schelle | Clamp | 1 |
| 5 | 154064906-548.08.004.0 | Ohr | Eye | 1 |
| 6 | 154065004-548.08.005.0 | Träger | Holder | 1 |
| 7 | 154060401-549.07.009.0 | Träger | Holder | 2 |
| 9 | 150134205-Kardan 019.0 | Gelenkwelle | P.T.O. Shaft | 1 |
| 10 | 150046603 | Schraube M12x110 | Screw M12x110 | 2 |
| 11 | 150196004 | Mutter M12 | Nut M12 | 6 |
| 12 | 150367908 | Mutter M16 | Nut M16 | 2 |
| 13 | 152290504-TN 01 | Unterlage 16,5/34-3 | Washer 16,5/34-3 | 2 |
| 14 | 153955401-TN 08-04 | Kleber SIP ROTO | Decal SIP ROTO | 1 |
| 15 | 000248805 | Schraube M12x35 | Screw M12x35 | 4 |

A=ROTO 175 D

B=ROTO 215 D

Bild G

Fig G



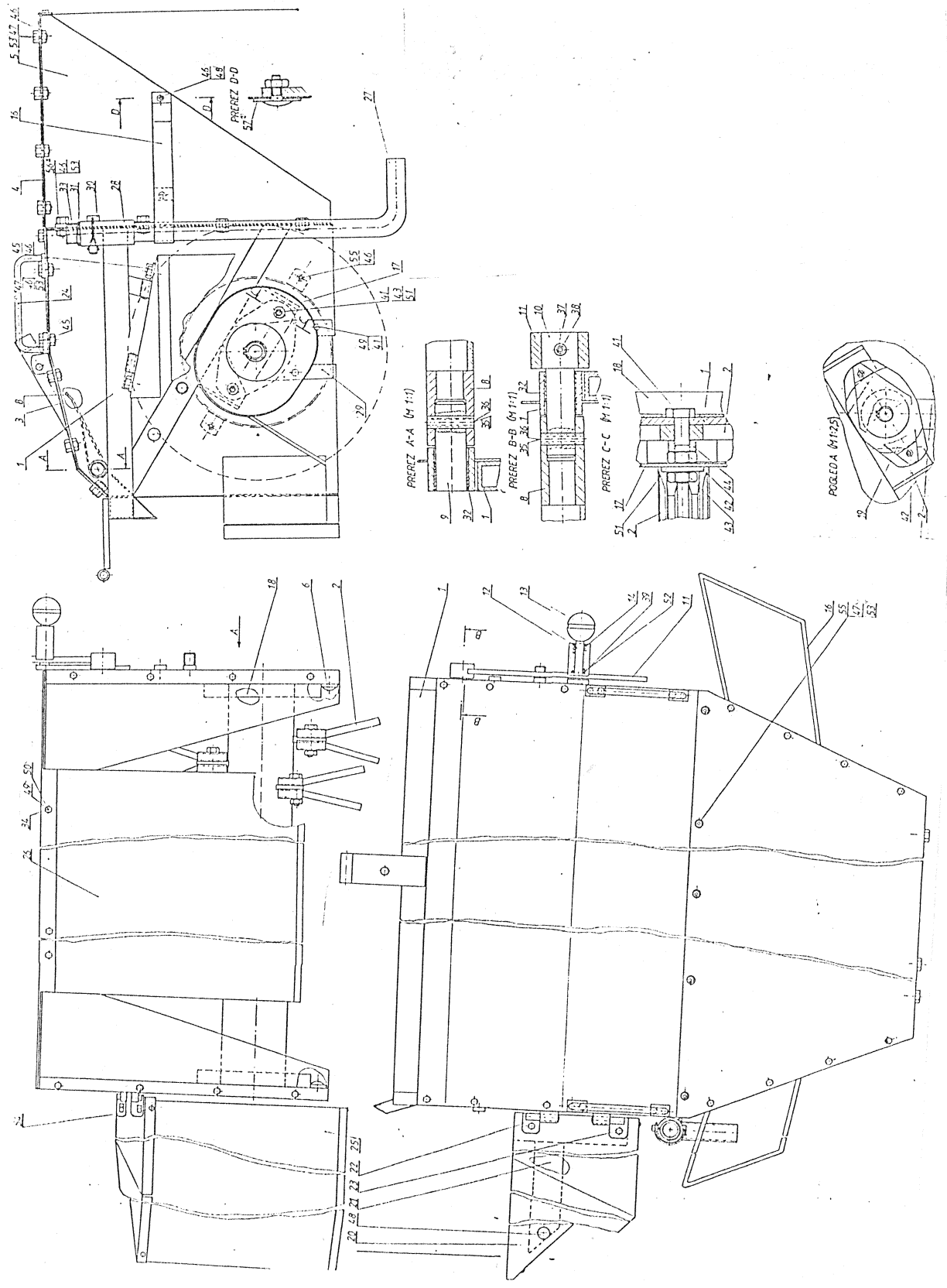
| No. on the figure Numer anzeichn. | Catalogue no. Katalog nummer | Benennung | Description | Quantity Stück |
|---|---------------------------------|------------------------|------------------------|-------------------|
| 1 | 154059404-549.07.002.0 | Gestell schw. | Frame | A1 |
| 1 | 154069803-548.07.002.0 | Gestell schw. | Frame | B1 |
| 2 | 154061106-549.07.020.0 | Aufbereiterwalze | Conditioning cylinder | A1 |
| 2 | 154069901-548.07.020.0 | Aufbereiterwalze | Conditioning cylinder | B1 |
| 3 | 154062203-549.07.040.0 | Deckel | Cover | A1 |
| 3 | 154070506-548.07.040.0 | Deckel | Cover | B1 |
| 4 | 154062301-549.07.041.0 | Deckel-Formbildig | Cover | A1 |
| 4 | 154070604-548.07.041.0 | Deckel-Formbildig | Cover | B1 |
| 5 | 154062409-549.07.042.0 | Seitenblech links | Left side | A1 |
| 5 | 154070702-548.07.042.0 | Seitenblech links | Left side | B1 |
| 6 | 154062506-549.07.042.0 | Seitenblech rechts | Right side | A1 |
| 6 | 154070800-548.07.042.0 | Seitenblech rechts | Right side | B1 |
| 8 | 154062604-549.07.050.0 | Klappe schw. | Flap | A1 |
| 8 | 154070203-548.07.050.0 | Klappe schw. | Flap | B1 |
| 9 | 154062908-549.07.054.0 | Bolzen 4 | Bolt 4 | 1 |
| 10 | 154063006-549.07.055.0 | Bolzen 19 | Bolt 19 | 1 |
| 11 | 151923404-515.07.041.0 | Händchen schw. | Handle | 1 |
| 12 | 151078700-260.11.003.0 | Bolzen | Bolt | 1 |
| 13 | 151078808-310.00.002.0 | Kogel | Ball | 1 |
| 14 | 151078602-215.11.006.0 | Feder | Spring | 1 |
| 16 | 154063104-549.07.060.0 | Sutzw. schw. | Protection | 2 |
| 17 | 154151704-549.07.036.0 | Gelenkwellessicherung | P.T.O Shaft protection | 1 |
| 18 | 154289807-557.07.026.0 | Deckel schw. | Cover | 2 |
| 19 | 154151704-549.07.095.0 | Lagerschutz | Bearing protection | 1 |
| 20 | 154063505-549.07.068.0 | Blech schw. | Plate | 1 |
| 21 | 154063809-549.07.071.0 | Zwischenstrebe | Link | 1 |
| 22 | 153697306-541.07.011.0 | Scharmir links schw | Neck | 1 |
| 23 | 153697404-541.07.015.0 | Scharmir rechts schw. | Neck | 1 |
| 24 | 154289004-557.07.030.0 | Hebel | Handle | 2 |
| 25 | 154064103-549.07.075.0 | Vorhänge | Curtain | 1 |
| 26 | 154064201-549.07.076.0 | Aubereitervorhänge | Conditioner curtain | A1 |
| 26 | 154070908-548.07.076.0 | Aufbereitervorhänge | Conditioner curtain | B1 |
| 27 | 154168607-549.07.090.0 | Stutzfuß | Suport leg | 1 |
| 28 | 154168705-549.07.091.0 | Rohr schw. | Tube | 1 |
| 29 | 154289905- 557.07.025.0 | Blech 1 | Plate 1 | 1 |
| 30 | 150392603 | Spannstift | Safety pin | 1 |
| 31 | 151007922-51002.054.2 | Deckel | Cover | 1 |
| 32 | 150394406-Glacier | Buchse PM 2020 0X | Sleeve PM 2020 0X | 2 |
| 33 | 000240304 | Splinte 5x50 | Cotter 5x50 | 1 |
| 34 | 000257108 | Unterlage C6 | Washer C6 | 5 |
| 35 | 000234008 | Spannhülse 8x32 | Pin 8x32 | 2 |
| 36 | 000232607 | Spannhülse 5x32 | Pin 5x32 | 2 |
| 37 | 000234204 | Spannhülse 8x40 | Pin 8x40 | 1 |
| 38 | 000232803 | Spannhülse 5x40 | Pin 5x40 | 1 |
| 39 | 000232000 | Spannhülse 4x24 | Pin 4x24 | 1 |
| 40 | 150407205 | Schraube M10x35 8.8 Zn | Screw M10x35 8.8 Zn | 2 |
| 41 | 150407508 | Unterlage 6 | Washer 6 | 4 |
| 42 | 150275400 | Mutter VM10 | Nut VM 10 | 4 |
| 43 | 000221307 | Mutter M10 8.8 Zn | Nut M10 8.8 Zn | 2 |
| 44 | 154065807 | Buchse | Sleeve | 2 |
| 45 | 000209205 | Schraube M8x30 | Screw M8x30 | 6 |
| 46 | 150275302 | Mutter VM8 | Nut VM 8 | A44,B46 |
| 47 | 000208509 | Schraube M8x15 | Screw M8x15 | 20 |
| 48 | 000257509 | Schraube M8x20 | Screw M8x20 | 5 |
| 49 | 150192204 | Schraube M6x10 | Screw M6x10 | 9 |
| 50 | 000250506 | Mutter M6 | Nut M6 | 5 |
| 51 | 000225900 | Unterlage C10 | Washer C10 | 2 |
| 52 | 000225508 | Unterlage A14 | Washer A14 | 1 |
| 53 | 000224108 | Unterlage A8 | Washer A8 | A33,B35 |
| 54 | 150300301 | Schraube A 4,2x13 | Screw A 4,2x13 | 2 |
| 55 | 150317507 | Schraube M8x16 | Screw M8x16 | A10,B12 |
| 56 | 000248903 | Schraube M8x16 | Screw M8x16 | 2 |
| 57 | 152150102 | Unterlage 11/32-2 | Washer 11/32-2 | 4 |

A= ROTO 175 D
B= ROTO 215 D

Bild H Fig H

Bild H

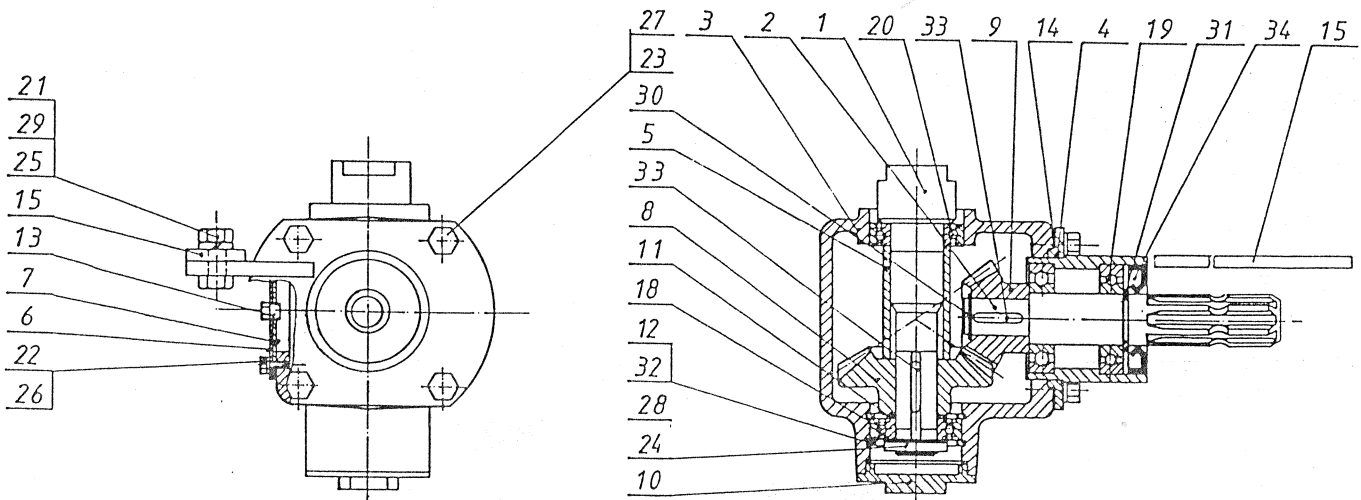
Fig H



| No. on the figure Numer anzeichn. | Catalogue no. Katalog nummer | Benennung | Description | Quantity Stück |
|---|---------------------------------|------------------------|----------------------|-------------------|
| 1 | 153559107-541.01.001.0 | Welle 18 | Shaft 18 | 1 |
| 2 | 154064808-548.08.003.0 | Welle12 | Shaft 12 | 1 |
| 3 | 151394903-455.05.019.0 | Antriebsgehäuse | Gear box | 1 |
| 4 | 151915609-515.01.005.0 | Scharnier schw. | Tube | 1 |
| 5 | 154065406-548.08.010.0 | Buchse 1 | Sleeve 1 | 1 |
| 6 | 151916207-515.01.012.0 | Platte 5 | Platte 5 | 1 |
| 7 | 151916305-515.01.013.0 | Platte 3 | Platte 3 | 1 |
| 8 | 154064700-548.08.002.0 | Kegelrad 1-23/4,42 | Pinion 1-23/4,42 | 1 |
| 9 | 154064602-548.08.001.0 | Kegelrad 1-15/3,8 | Pinion 1-15/3,8 | 1 |
| 10 | 151012503-455.04.032.0 | Dekel Plast. | Plastic cover | 1 |
| 11 | 151014002-TN 01 | Unterlage 30,2/38-0,8 | Washer 30,2/38-0,8 | 1 |
| 12 | 151014501-455.05.056.0 | Unterlage 50/61,8 | Washer 50/61,8 | 1 |
| 13 | 151203405-115.08.020.5 | Schraube 6 | Screw 6 | 1 |
| 14 | 151916403-515.01.014.0 | Platte 3 | Plate 3 | 1 |
| 15 | 151916500-515.01.016.0 | Band 2 | Band 2 | 1 |
| 18 | 000243105 | Lager KR 6206 2 RS | Bearing KR 6206 2 RS | 1 |
| 19 | 000243800 | Lager KR 6207 | Bearing KR 6207 | 2 |
| 20 | 150100802 | Lager KR 6007 2 RS | Bearing KR 6007 2 RS | 1 |
| 21 | 000212004 | Schraube M12x30 | Screw M12x30 | 2 |
| 22 | 000207608 | Schraube M6x15 | Screw M6x15 | 4 |
| 23 | 150087202 | Schraube M12x25 | Screw M12x25 | 4 |
| 24 | 000223207 | Mutter M30x1,5 | Nut M30x1,5 | 1 |
| 25 | 150160300 | Mutter M12 | Nut M12 | 2 |
| 26 | 000227908 | Unterlage B6 | Washer B6 | 4 |
| 27 | 000228505 | Unterlage B12 | Washer B12 | 4 |
| 28 | 150026607 | Unterlage 30 | Washer 30 | 1 |
| 29 | 000228603 | Unterlage B12 | Washer B12 | 2 |
| 30 | 000237201 | Segerring 22 | Circlip 22 | 1 |
| 31 | 000237602 | Segerring 35 | Circlip 35 | 1 |
| 32 | 000236300 | Segerring 62 | Circlip 62 | 2 |
| 33 | 000256001 | Dubel A8x7x34 | Cotter A8x7x34 | 1 |
| 34 | 150047103 | Dichtungsring 35x72x12 | Oil seal 35x72x12 | 1 |
| 35 | 150004907 | Fett viskoma R | Grease | 1,7 kg |
| 36 | 150425409 | Dubel A8x5x34 | Cotter A8x5x34 | 1 |

A = ROTO 175 D
B = ROTO 215 D

Bild J Fig J



| No. on the figure Numer anzeichn. | Catalogue no. Katalog nummer | Benennung | Description | Quantity Stück |
|---|---------------------------------|------------------------|----------------------|-------------------|
| 1 | 153559107-541.01.001.0 | Welle 18 | Shaft 18 | 1 |
| 2 | 154064808-548.08.003.0 | Welle 12 | Shaft 12 | 1 |
| 3 | 151394903-455.05.019.0 | Antriebsgehäuse | Gear box | 1 |
| 4 | 151915609-515.01.005.0 | Scharnier schw. | Tube | 1 |
| 5 | 154065406-548.08.010.0 | Buchse 1 | Sleeve 1 | 1 |
| 6 | 151916207-515.01.012.0 | Platte 5 | Platte 5 | 1 |
| 7 | 151916305-515.01.013.0 | Platte 3 | Platte 3 | 1 |
| 8 | 154064700-548.08.002.0 | Kegelrad 1-23/4,42 | Pinion 1-23/4,42 | 1 |
| 9 | 154064602-548.08.001.0 | Kegelrad 1-15/3,8 | Pinion 1-15/3,8 | 1 |
| 10 | 151012503-455.04.032.0 | Dekel Plast. | Plastic cover | 1 |
| 11 | 151014002-TN 01 | Unterlage 30,2/38-0,8 | Washer 30,2/38-0,8 | 1 |
| 12 | 151014501-455.05.056.0 | Unterlage 50/61,8 | Washer 50/61,8 | 1 |
| 13 | 151203405-115.08.020.5 | Schraube 6 | Screw 6 | 1 |
| 14 | 151916403-515.01.014.0 | Platte 3 | Plate 3 | 1 |
| 15 | 151916500-515.01.016.0 | Band 2 | Band 2 | 1 |
| 18 | 000243105 | Lager KR 6206 2 RS | Bearing KR 6206 2 RS | 1 |
| 19 | 000243800 | Lager KR 6207 | Bearing KR 6207 | 2 |
| 20 | 150100802 | Lager KR 6007 2 RS | Bearing KR 6007 2 RS | 1 |
| 21 | 000212004 | Schraube M12x30 | Screw M12x30 | 2 |
| 22 | 000207608 | Schraube M6x15 | Screw M6x15 | 4 |
| 23 | 150087202 | Schraube M12x25 | Screw M12x25 | 4 |
| 24 | 000223207 | Mutter M30x1,5 | Nut M30x1,5 | 1 |
| 25 | 150160300 | Mutter M12 | Nut M12 | 2 |
| 26 | 000227908 | Unterlage B6 | Washer B6 | 4 |
| 27 | 000228505 | Unterlage B12 | Washer B12 | 4 |
| 28 | 150026607 | Unterlage 30 | Washer 30 | 1 |
| 29 | 000228603 | Unterlage B12 | Washer B12 | 2 |
| 30 | 000237201 | Segerring 22 | Circlip 22 | 1 |
| 31 | 000237602 | Segerring 35 | Circlip 35 | 1 |
| 32 | 000236300 | Segerring 62 | Circlip 62 | 2 |
| 33 | 000256001 | Dubel A8x7x34 | Cotter A8x7x34 | 1 |
| 34 | 150047103 | Dichtungsring 35x72x12 | Oil seal 35x72x12 | 1 |
| 35 | 150004907 | Fett viskoma R | Grease | 1,7 kg |
| 36 | 150425409 | Dubel A8x5x34 | Cotter A8x5x34 | 1 |

A = ROTO 175 D
B = ROTO 215 D

Bild J Fig J

